

# Converting Colors

Hex(DBC5D2)

Have a look what the booklet for  
Hex(DBC5D2) contains.

<b>Hex(DBC5D2)</b> .....	3
<i><b>Conversions</b></i> .....	4
<i><b>Details</b></i> .....	6
<i><b>Harmonies</b></i> .....	11
<i><b>Previews</b></i> .....	23
<i><b>Color Blindness Simulation</b></i> .....	26
<i><b>CSS Examples</b></i> .....	29

# **Color**

**Hex(DBC5D2)**

# Conversions

## Conversions Part 1

Format	Color
Hex	DBC5D2
RGB	219, 197, 210
RGB Percent	86%, 77%, 82%
CMY	0.1412, 0.2275, 0.1765
CMYK	0.00, 0.10, 0.04, 0.14
HSL	325°, 23%, 82%
HSV	325°, 10%, 86%
XYZ	60.8125, 59.6457, 69.2804
YIQ	205.0600, 8.9390, 8.7070

# Conversions

## Conversions Part 2

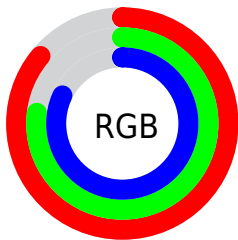
<b>Format</b>	<b>Color</b>
R <sub>YB</sub>	219, 197, 210
Decimal	14403026
CIE Lab	81.65, 9.96, -3.67
CIE LCh	82, 10.614, 339.791
Yxy	59.6457, 0.3205, 0.3144
Android (android.graphics.Color)	4292593106 (0xFFDBC5D2)
YUV	205.0600, 2.4354, 12.2254
Hunter-Lab	77.2306, 5.3999, 0.8749

# Details

The Hex color **DBC5D2** is a light color, and the websafe version is hex **CCCCCC**. A complement of this color would be **C5DBCE**, and the grayscale version is **CDCDCD**.

A 20% lighter version of the original color is **FFFEFF**, and **A48F9C** is the 20% darker color. If you saturate the color by 10%, you get **DBAFC9**, and if you desaturate by 10%, it is **DBDBDB**.

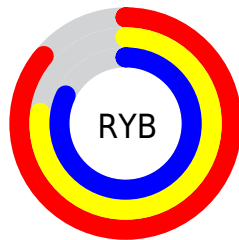
# Distribution



Red (86%)

Green (77%)

Blue (82%)



Red (86%)

Yellow (77%)

Blue (82%)

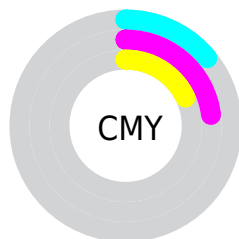


Cyan (0%)

Magenta (10%)

Yellow (4%)

Black (14%)



Cyan (14%)

Magenta (23%)

Yellow (18%)

# Brightness & Saturation Gradients

These gradients show how the Hex color DBC5D2 changes by changing the brightness by 10 percent. The first figure shows a shift by +10% for each color and the second figure -10%.

Similar to the brightness gradients but the following saturation gradients show a change of the Hex color DBC5D2 by changing the saturation by 10% instead.



 DBC5D2

 DBC5D2

FFFFFF

 BFAAB6

FFFEFF

 A48F9C

 8A7682

 705D68

 584550

 402F39

 2A1A24

 17000F

 000000

 DBC5D2

 DBC5D2

 DBAFC9

 DBDBDB

 DB99C0

 DBF1E4

 DB83B7

 DBFFED

 DB6DAE

 DBFFF6

 DB58A5

 DBFFFF

 DB429C

 DB2C93

 DB168A

 DB0081

# Harmonies

## Analogous

The Analogous color harmony consists of three colors that are next to each other on the color wheel.



D1C7DA



DBC5D2



E0C4C8

# Triad

The Triadic color harmony groups three colors that are evenly spaced from another and form a triangle on the color wheel.



DBC5D2



D0CBB7



B3D0D7

# Complementary

The Complementary color scheme is a pair of colors which are on the opposite of each other on the color wheel.



DBC5D2



C5DBCE

# Split Complementary

Split-complementary colors differ from the complementary color scheme. The scheme consists of three colors, the original color and two neighbors of the complement color.



B3D1CE



DBC5D2



C4CEBB

# Square

The Square scheme is like the rectangle color scheme, but the four colors are evenly spaced on the color wheel.



DBC5D2



DAC8B9



BAD0C4



B9CEDD

# Rectangle

The Rectangle color scheme consists of four colors that form a rectangle on the color wheel.



DBC5D2



E1C5C1



BAD0C4



B2D1D4



# Sweetspot

The Sweet Spot groups the original color and five complimentary colors.



DBC5D2



FFF7FC



CEC5DB



807A7D



000000



808080



# Same Dimension

The Same Dimension uses a secret algorithm to generate beautiful new colors.



DBC5D2



FFE0F2



DBC5C7



6E6369



AD0066



2E001B



# Inverse Universe

The Inverse Universe completely reimagines the original color for something new.



DBC5D2



FFE0F2



C5DBD9



6E6369



AD0066

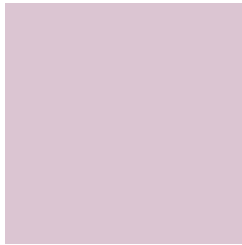


2E001B



# Previews

## White Background



This preview shows how the Hex color DBC5D2 looks on a white background.

## Color Contrast Check

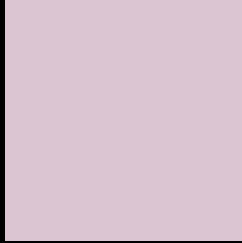
Large Text (above 18pt) WCAG AA × Fail

Any Text WCAG AA × Fail

Large Text (above 18pt) WCAG AAA × Fail

Any Text WCAG AAA × Fail

# Black Background



This preview shows how the Hex color DBC5D2 looks on a black background.

## Color Contrast Check

Large Text (above 18pt) WCAG AA ✓ Pass

Any Text WCAG AA ✓ Pass

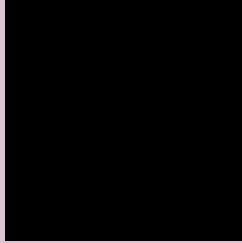
Large Text (above 18pt) WCAG AAA ✓ Pass

Any Text WCAG AAA ✓ Pass

If you want to check with other color combinations, try the [Color Contrast Checker](#).



## Hex DBC5D2 Background



This preview shows how black text looks on a background with the Hex color DBC5D2.



This preview shows how white text looks on a background with the Hex color DBC5D2.

# Color Blindness Simulation

Color vision deficiency is a very complex topic, and I could not describe the different causes any better than Wikipedia does, so if you want to learn more, you should check out their [article about color blindness](#).

## Dichromacy



**Original Color**  
DBC5D2

**Protanopia**  
CCCAD5

**Deuteranopia**  
DBC5D2



**Tritanopia**  
DBC5D4

# Trichromacy



**Original Color**  
DBC5D2

**Protanomaly**  
D1C8D4

**Deuteranomaly**  
DBC5D2

**Tritanomaly**  
DBC5D3

# Monochromacy



**Original Color**  
DBC5D2

**Achromatopsia**  
CDCDCD

**Achromatomaly**  
D2CACF

# CSS Examples

## Text

The CSS property to change the color of the text to Hex DBC5D2 is called "color". The color property can be set on classes, ids or directly on the HTML element.

This example shows how text in the color #DBC5D2 looks like.

```
.text, #text, p{  
    color:#DBC5D2  
}
```

If you want to add a text shadow in that color use the text-shadow property, you can generate a text shadow directly with our [CSS Text Shadow Generator](#).

Here you see how black text with a 4 pixel #DBC5D2 colored shadow looks like.

```
.shadow{ text-shadow: 4px 4px 2px #DBC5D2
}
```

## Border

The CSS property to change the border of an element to Hex DBC5D2 is called "border". The border property can be set on classes, ids or directly on the HTML element.

This example shows the color as border, it can be applied via the CSS property "border" or "border-color".

```
.border, #border, table{ border:4px solid
#DBC5D2 }
```

If only the border color should be changed use the property `border-color`.

```
.border{ border-color:#DBC5D2 }
```

If you want to add a box shadow in that color use:

Here you see how a box with a 4 pixel #DBC5D2 colored shadow looks like.

```
.boxshadow{ -moz-box-shadow:4px 4px 4px  
4px #DBC5D2; -webkit-box-shadow:4px 4px  
4px 4px #DBC5D2; box-shadow:4px 4px 4px  
4px #DBC5D2 }
```

# Background

The CSS property to change the background color of an element to Hex DBC5D2 is called "background". The background property can be set on classes, ids or directly on the HTML element.

```
.background, #background, body{  
background:#DBC5D2 }
```

If only the background color should be changed can be used:

```
.background{ background-color:#DBC5D2 }
```

This example shows the color as background, it is applied via the CSS property "background".

To optimize and compress your CSS code, you can use our [online CSS compressor and optimizer](#) based on csstidy. If you want to create a linear or radial gradient as background or border, check our [CSS Gradient Generator](#).



Hey! You found this booklet interesting? Support Converting Colors with the new Membership Option!

The pro membership hides all ads, plus gives you double the colors in the color bucket, and more awesome pro features!

**[Learn more, Memberships starting at \\$2.50/m!](#)**

**Follow me  
on Twitter!**

@ConvertingColor