

Converting Colors

Hex(DBC6C0)

Have a look what the booklet for
Hex(DBC6C0) contains.

Hex(DBC6C0)	3
<i>Conversions</i>	4
<i>Details</i>	6
<i>Harmonies</i>	11
<i>Previews</i>	23
<i>Color Blindness Simulation</i>	26
<i>CSS Examples</i>	29

Color

Hex(DBC6C0)

Conversions

Conversions Part 1

Format	Color
Hex	DBC6C0
RGB	219, 198, 192
RGB Percent	86%, 78%, 75%
CMY	0.1412, 0.2235, 0.2471
CMYK	0.00, 0.10, 0.12, 0.14
HSL	13°, 27%, 81%
HSV	13°, 12%, 86%
XYZ	58.9219, 59.2540, 58.2008
YIQ	203.5950, 14.4420, 2.5860

Conversions

Conversions Part 2

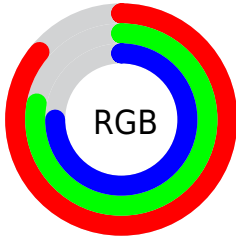
Format	Color
R _Y B	219, 200, 192
Decimal	14403264
CIE Lab	81.43, 6.37, 5.67
CIE LCh	81, 8.531, 41.671
Yxy	59.2540, 0.3341, 0.3360
Android (android.graphics.Color)	4292593344 (0xFFDBC6C0)
YUV	203.5950, -5.7163, 13.5102
Hunter-Lab	76.9766, 1.9241, 9.0554

Details

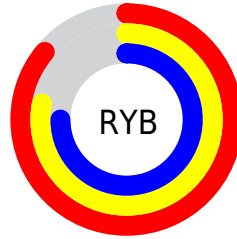
The Hex color **DBC6C0** is a light color, and the websafe version is hex **CCCCCC**. A complement of this color would be **C0D5DB**, and the grayscale version is **CCCCCC**.

A 20% lighter version of the original color is **FFFFFF8**, and **A4908B** is the 20% darker color. If you saturate the color by 10%, you get **DBB5AA**, and if you desaturate by 10%, it is **DBD7D6**.

Distribution



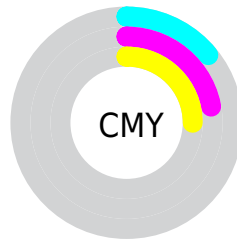
- Red (86%)
- Green (78%)
- Blue (75%)



- Red (86%)
- Yellow (78%)
- Blue (75%)



- Cyan (0%)
- Magenta (10%)
- Yellow (12%)
- Black (14%)



- Cyan (14%)
- Magenta (22%)
- Yellow (25%)

Brightness & Saturation Gradients

These gradients show how the Hex color DBC6C0 changes by changing the brightness by 10 percent. The first figure shows a shift by +10% for each color and the second figure -10%.

Similar to the brightness gradients but the following saturation gradients show a change of the Hex color DBC6C0 by changing the saturation by 10% instead.

 DBC6C0

FFFFFF

 FFFFF8

 DBC6C0

 BFABA5

 A4908B

 897771

 705E59

 574641

 40302B

 291B17

 150000

 000000

 DBC6C0

 DBC6C0

 DBB5AA

 DBD7D6

 DBA494

 DBE8EC

 DB937E

 DBF9FF

 DB8268

 DBFFFF

 DB7153

 DB603D

 DB4F27

 DB3E11

 DB3100

Harmonies

Analogous

The Analogous color harmony consists of three colors that are next to each other on the color wheel.



DCC5C7



DBC6C0



D6C8BB

Triad

The Triadic color harmony groups three colors that are evenly spaced from another and form a triangle on the color wheel.



DBC6C0



BCCFC5



C6CADA

Complementary

The Complementary color scheme is a pair of colors which are on the opposite of each other on the color wheel.



DBC6C0



C0D5DB

Split Complementary

Split-complementary colors differ from the complementary color scheme. The scheme consists of three colors, the original color and two neighbors of the complement color.



BDCCD9



DBC6C0



B7CFCD

Square

The Square scheme is like the rectangle color scheme, but the four colors are evenly spaced on the color wheel.



DBC6C0



C4CDBE



B8CED5



D0C7D6

Rectangle

The Rectangle color scheme consists of four colors that form a rectangle on the color wheel.



DBC6C0



D1CABA



B8CED5



C3CBDA

Sweetspot

The Sweet Spot groups the original color and five complimentary colors.



DBC6C0



FFF7F5



DBC0D5



807B79



000000



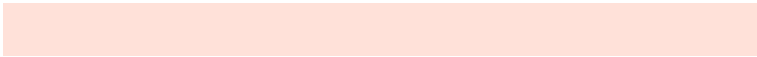
808080

Same Dimension

The Same Dimension uses a secret algorithm to generate beautiful new colors.



DBC6C0



FFE1D9



DBD3C0



6E6563



AD2700



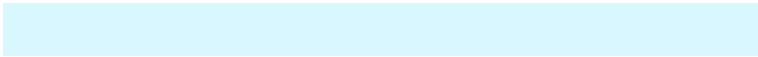
2E0A00

Inverse Universe

The Inverse Universe completely reimagines the original color for something new.



C0D5DB



D9F7FF



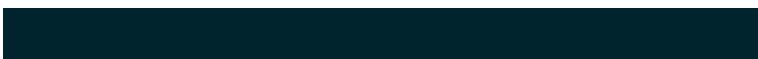
C0C8DB



636B6E



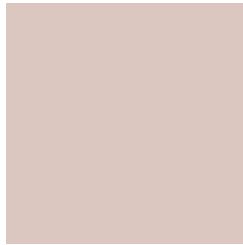
0087AD



00242E

Previews

White Background



This preview shows how the Hex color DBC6C0 looks on a white background.

Color Contrast Check

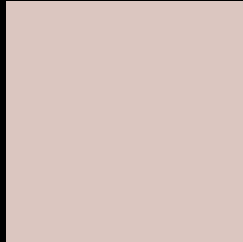
Large Text (above 18pt) WCAG AA × Fail

Any Text WCAG AA × Fail

Large Text (above 18pt) WCAG AAA × Fail

Any Text WCAG AAA × Fail

Black Background



This preview shows how the Hex color DBC6C0 looks on a black background.

Color Contrast Check

Large Text (above 18pt) WCAG AA ✓ Pass

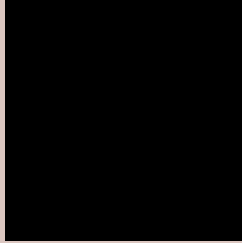
Any Text WCAG AA ✓ Pass

Large Text (above 18pt) WCAG AAA ✓ Pass

Any Text WCAG AAA ✓ Pass

If you want to check with other color combinations, try the [Color Contrast Checker](#).

Hex DBC6C0 Background



This preview shows how black text looks on a background with the Hex color DBC6C0.

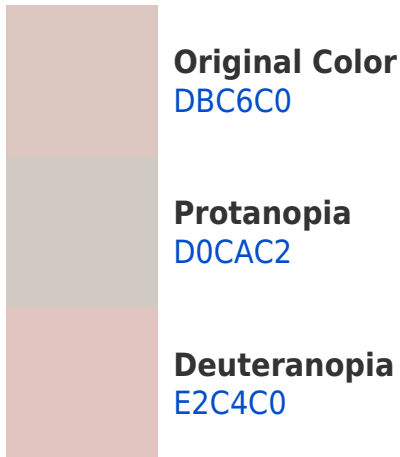


This preview shows how white text looks on a background with the Hex color DBC6C0.

Color Blindness Simulation

Color vision deficiency is a very complex topic, and I could not describe the different causes any better than Wikipedia does, so if you want to learn more, you should check out their [article about color blindness](#).

Dichromacy





Tritanopia
DDC3D2

Trichromacy



Original Color
DBC6C0

Protanomaly
D4C9C1

Deuteranomaly
DFC5C0

Tritanomaly
DCC4CB

Monochromacy



Original Color
DBC6C0

Achromatopsia
CCCCCC

Achromatomaly
D1CAC8

CSS Examples

Text

The CSS property to change the color of the text to Hex DBC6C0 is called "color". The color property can be set on classes, ids or directly on the HTML element.

This example shows how text in the color #DBC6C0 looks like.

```
.text, #text, p{  
    color:#DBC6C0  
}
```

If you want to add a text shadow in that color use the text-shadow property, you can generate a text shadow directly with our [CSS Text Shadow Generator](#).

Here you see how black text with a 4 pixel #DBC6C0 colored shadow looks like.

```
.shadow{ text-shadow: 4px 4px 2px #DBC6C0
}
```

Border

The CSS property to change the border of an element to Hex DBC6C0 is called "border". The border property can be set on classes, ids or directly on the HTML element.

This example shows the color as border, it can be applied via the CSS property "border" or "border-color".

```
.border, #border, table{ border:4px solid
#DBC6C0 }
```

If only the border color should be changed use the property `border-color`.

```
.border{ border-color:#DBC6C0 }
```

If you want to add a box shadow in that color use:

Here you see how a box with a 4 pixel #DBC6C0 colored shadow looks like.

```
.boxshadow{ -moz-box-shadow:4px 4px 4px  
4px #DBC6C0; -webkit-box-shadow:4px 4px  
4px 4px #DBC6C0; box-shadow:4px 4px 4px  
4px #DBC6C0 }
```

Background

The CSS property to change the background color of an element to Hex DBC6C0 is called "background". The background property can be set on classes, ids or directly on the HTML element.

```
.background, #background, body{  
background:#DBC6C0 }
```

If only the background color should be changed can be used:

```
.background{ background-color:#DBC6C0 }
```

This example shows the color as background, it is applied via the CSS property "background".

To optimize and compress your CSS code, you can use our [online CSS compressor and optimizer](#) based on csstidy. If you want to create a linear or radial gradient as background or border, check our [CSS Gradient Generator](#).

Hey! You found this booklet interesting? Support Converting Colors with the new Membership Option!

The pro membership hides all ads, plus gives you double the colors in the color bucket, and more awesome pro features!

[Learn more, Memberships starting at \\$2.50/m!](#)

**Follow me
on Twitter!**

@ConvertingColor