

Converting Colors

Hex(DBC6CC)

Have a look what the booklet for
Hex(DBC6CC) contains.

Hex(DBC6CC)	3
<i>Conversions</i>	4
<i>Details</i>	6
<i>Harmonies</i>	11
<i>Previews</i>	23
<i>Color Blindness Simulation</i>	26
<i>CSS Examples</i>	29

Color

Hex(DBC6CC)

Conversions

Conversions Part 1

Format	Color
Hex	DBC6CC
RGB	219, 198, 204
RGB Percent	86%, 78%, 80%
CMY	0.1412, 0.2235, 0.2000
CMYK	0.00, 0.10, 0.07, 0.14
HSL	343°, 23%, 82%
HSV	343°, 10%, 86%
XYZ	60.3066, 59.8079, 65.4923
YIQ	204.9630, 10.5900, 6.3180

Conversions

Conversions Part 2

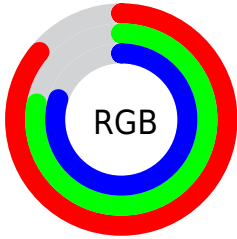
Format	Color
R _Y B	219, 198, 204
Decimal	14403276
CIE Lab	81.73, 8.38, -0.32
CIE LCh	82, 8.388, 357.814
Yxy	59.8079, 0.3249, 0.3222
Android (android.graphics.Color)	4292593356 (0xFFDBC6CC)
YUV	204.9630, -0.4748, 12.3104
Hunter-Lab	77.3355, 3.8578, 3.9246

Details

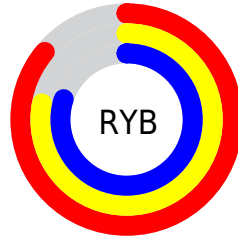
The Hex color **DBC6CC** is a light color, and the websafe version is hex **CCCCCC**. A complement of this color would be **C6DBD5**, and the grayscale version is **CDCDCD**.

A 20% lighter version of the original color is **FFFFFF**, and **A49096** is the 20% darker color. If you saturate the color by 10%, you get **DBB0BC**, and if you desaturate by 10%, it is **DBDCDC**.

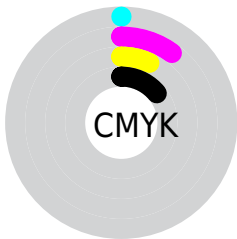
Distribution



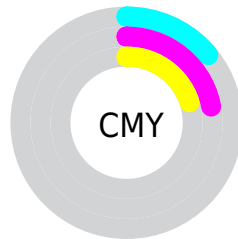
- Red (86%)
- Green (78%)
- Blue (80%)



- Red (86%)
- Yellow (78%)
- Blue (80%)



- Cyan (0%)
- Magenta (10%)
- Yellow (7%)
- Black (14%)



- Cyan (14%)
- Magenta (22%)
- Yellow (20%)

Brightness & Saturation Gradients

These gradients show how the Hex color DBC6CC changes by changing the brightness by 10 percent. The first figure shows a shift by +10% for each color and the second figure -10%.

Similar to the brightness gradients but the following saturation gradients show a change of the Hex color DBC6CC by changing the saturation by 10% instead.

 DBC6CC

FFFFFF

 DBC6CC

 BFABB1

 A49096

 8A777C

 705E63

 58464B

 403035

 2A1B20

 170007

 000000

 DBC6CC

 DBC6CC

 DBB0BC

 DBDCDC

 DB9AAD

 DBF2EB

 DB849D

 DBFFFB

 DB6E8D

 DBFFFF

 DB597E

 DB436E

 DB2D5F

 DB174F

 DB013F

Harmonies

Analogous

The Analogous color harmony consists of three colors that are next to each other on the color wheel.



D5C7D4



DBC6CC



DCC6C4

Triad

The Triadic color harmony groups three colors that are evenly spaced from another and form a triangle on the color wheel.



DBC6CC



CACDBD



BBCED8

Complementary

The Complementary color scheme is a pair of colors which are on the opposite of each other on the color wheel.



DBC6CC



C6DBD5

Split Complementary

Split-complementary colors differ from the complementary color scheme. The scheme consists of three colors, the original color and two neighbors of the complement color.



B8D0D2



DBC6CC



C1CFC3

Square

The Square scheme is like the rectangle color scheme, but the four colors are evenly spaced on the color wheel.



DBC6CC



D3CABC



BAD0CA



C3CCDB

Rectangle

The Rectangle color scheme consists of four colors that form a rectangle on the color wheel.



DBC6CC



DBC7C0



BAD0CA



B9CFD6

Sweetspot

The Sweet Spot groups the original color and five complimentary colors.



DBC6CC



FFF7FA



D5C6DB



807A7C



000000



808080

Same Dimension

The Same Dimension uses a secret algorithm to generate beautiful new colors.



DBC6CC



FFE0E9



DBCAC6



6E6366



AD0032



2E000D

Inverse Universe

The Inverse Universe completely reimagines the original color for something new.



DBC6CC



FFE0E9



C6D7DB



6E6366



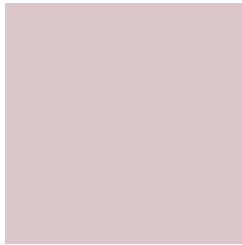
AD0032



2E000D

Previews

White Background



This preview shows how the Hex color DBC6CC looks on a white background.

Color Contrast Check

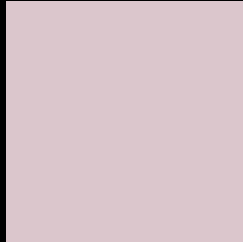
Large Text (above 18pt) WCAG AA × Fail

Any Text WCAG AA × Fail

Large Text (above 18pt) WCAG AAA × Fail

Any Text WCAG AAA × Fail

Black Background



This preview shows how the Hex color DBC6CC looks on a black background.

Color Contrast Check

Large Text (above 18pt) WCAG AA ✓ Pass

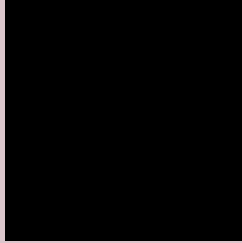
Any Text WCAG AA ✓ Pass

Large Text (above 18pt) WCAG AAA ✓ Pass

Any Text WCAG AAA ✓ Pass

If you want to check with other color combinations, try the [Color Contrast Checker](#).

Hex DBC6CC Background



This preview shows how black text looks on a background with the Hex color DBC6CC.

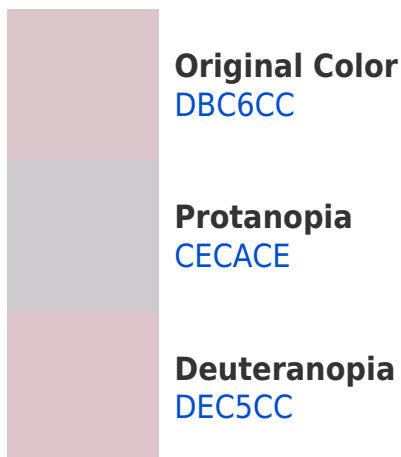


This preview shows how white text looks on a background with the Hex color DBC6CC.

Color Blindness Simulation

Color vision deficiency is a very complex topic, and I could not describe the different causes any better than Wikipedia does, so if you want to learn more, you should check out their [article about color blindness](#).

Dichromacy



Trichromacy



Original Color
DBC6CC

Protanomaly
D3C9CD

Deuteranomaly
DDC5CC

Tritanomaly
DCC5D1

Monochromacy



Original Color
DBC6CC

Achromatopsia
CDCDCD

Achromatomaly
D2CACD

CSS Examples

Text

The CSS property to change the color of the text to Hex DBC6CC is called "color". The color property can be set on classes, ids or directly on the HTML element.

This example shows how text in the color #DBC6CC looks like.

```
.text, #text, p{  
    color:#DBC6CC  
}
```

If you want to add a text shadow in that color use the text-shadow property, you can generate a text shadow directly with our [CSS Text Shadow Generator](#).

Here you see how black text with a 4 pixel #DBC6CC colored shadow looks like.

```
.shadow{ text-shadow: 4px 4px 2px #DBC6CC }  
}
```

Border

The CSS property to change the border of an element to Hex DBC6CC is called "border". The border property can be set on classes, ids or directly on the HTML element.

This example shows the color as border, it can be applied via the CSS property "border" or "border-color".

```
.border, #border, table{ border:4px solid #DBC6CC }  
}
```

If only the border color should be changed use the property `border-color`.

```
.border{ border-color:#DBC6CC }
```

If you want to add a box shadow in that color use:

Here you see how a box with a 4 pixel #DBC6CC colored shadow looks like.

```
.boxshadow{ -moz-box-shadow:4px 4px 4px  
4px #DBC6CC; -webkit-box-shadow:4px 4px  
4px 4px #DBC6CC; box-shadow:4px 4px 4px  
4px #DBC6CC }
```

Background

The CSS property to change the background color of an element to Hex DBC6CC is called "background". The background property can be set on classes, ids or directly on the HTML element.

```
.background, #background, body{  
background:#DBC6CC }
```

If only the background color should be changed can be used:

```
.background{ background-color:#DBC6CC }
```

This example shows the color as background, it is applied via the CSS property "background".

To optimize and compress your CSS code, you can use our [online CSS compressor and optimizer](#) based on csstidy. If you want to create a linear or radial gradient as background or border, check our [CSS Gradient Generator](#).

Hey! You found this booklet interesting? Support Converting Colors with the new Membership Option!

The pro membership hides all ads, plus gives you double the colors in the color bucket, and more awesome pro features!

[Learn more, Memberships starting at \\$2.50/m!](#)

**Follow me
on Twitter!**

@ConvertingColor