

Converting Colors

Hex(DBC7B3)

Have a look what the booklet for
Hex(DBC7B3) contains.

Hex(DBC7B3)	3
<i>Conversions</i>	4
<i>Details</i>	6
<i>Harmonies</i>	11
<i>Previews</i>	23
<i>Color Blindness Simulation</i>	26
<i>CSS Examples</i>	29

Color

Hex(DBC7B3)

Conversions

Conversions Part 1

Format	Color
Hex	DBC7B3
RGB	219, 199, 179
RGB Percent	86%, 78%, 70%
CMY	0.1412, 0.2196, 0.2980
CMYK	0.00, 0.09, 0.18, 0.14
HSL	30°, 36%, 78%
HSV	30°, 18%, 86%
XYZ	57.7735, 59.1616, 51.0222
YIQ	202.7000, 18.3400, -1.9800

Conversions

Conversions Part 2

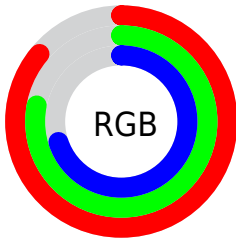
Format	Color
R_{YB}	219, 219, 179
Decimal	14403507
CIE _{Lab}	81.38, 3.80, 12.55
CIE _{LCh}	81, 13.116, 73.146
Yxy	59.1616, 0.3440, 0.3522
Android (android.graphics.Color)	4292593587 (0xFFDBC7B3)
YUV	202.7000, -11.6841, 14.2951
Hunter-Lab	76.9166, -0.5292, 14.5119

Details

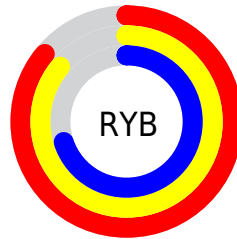
The Hex color **DBC7B3** is a light color, and the websafe version is hex **CCCCCC**. A complement of this color would be **B3C7DB**, and the grayscale version is **CBCBCB**.

A 20% lighter version of the original color is **FFFFEB**, and **A4917E** is the 20% darker color. If you saturate the color by 10%, you get **DBBC9D**, and if you desaturate by 10%, it is **DBD2C9**.

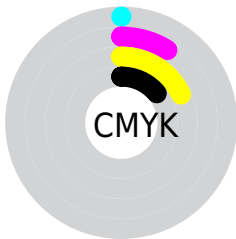
Distribution



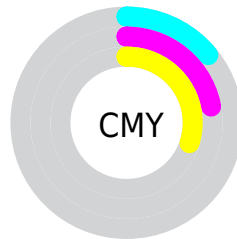
- Red (86%)
- Green (78%)
- Blue (70%)



- Red (86%)
- Yellow (86%)
- Blue (70%)



- Cyan (0%)
- Magenta (9%)
- Yellow (18%)
- Black (14%)



- Cyan (14%)
- Magenta (22%)
- Yellow (30%)

Brightness & Saturation Gradients

These gradients show how the Hex color DBC7B3 changes by changing the brightness by 10 percent. The first figure shows a shift by +10% for each color and the second figure -10%.

Similar to the brightness gradients but the following saturation gradients show a change of the Hex color DBC7B3 by changing the saturation by 10% instead.

 DBC7B3

FFFFFF

 FFFFEB

 DBC7B3

 BFAC98

 A4917E

 897865

 6F5F4D

 574736

 3F3121

 291C0B

 100200

 000000

 DBC7B3

 DBC7B3

 DBBC9D

 DBD2C9

 DBB187

 DBDDDF

 DBA671

 DBE8F5

 DB9B5B

 DBF3FF

 DB9046

 DBFEFF

 DB8530

 DBFFFF

 DB7A1A

 DB6F04

 DB6E00

Harmonies

Analogous

The Analogous color harmony consists of three colors that are next to each other on the color wheel.



E3C4BA



DBC7B3



CFCBB2

Triad

The Triadic color harmony groups three colors that are evenly spaced from another and form a triangle on the color wheel.



DBC7B3



ACD2CF



D3C5DC

Complementary

The Complementary color scheme is a pair of colors which are on the opposite of each other on the color wheel.



DBC7B3



B3C7DB

Split Complementary

Split-complementary colors differ from the complementary color scheme. The scheme consists of three colors, the original color and two neighbors of the complement color.



C4C9E2



DBC7B3



ADD0DA

Square

The Square scheme is like the rectangle color scheme, but the four colors are evenly spaced on the color wheel.



DBC7B3



B4D1C3



B6CDE1



DFC3D2

Rectangle

The Rectangle color scheme consists of four colors that form a rectangle on the color wheel.



DBC7B3



C5CEB5



B6CDE1



CEC7DF

Sweetspot

The Sweet Spot groups the original color and five complimentary colors.



DBC7B3



FFF9F2



DBB3C7



807C78



000000



808080

Same Dimension

The Same Dimension uses a secret algorithm to generate beautiful new colors.



DBC7B3



FFE3C7



DBDBB3



6E6863



AD5700



2E1700

Inverse Universe

The Inverse Universe completely reimagines the original color for something new.



B3C7DB



C7E3FF



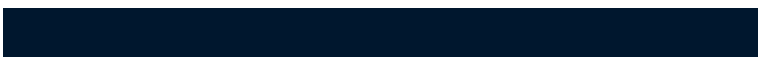
B3B3DB



63686E



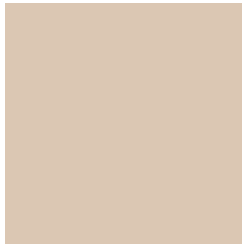
0057AD



00172E

Previews

White Background



This preview shows how the Hex color DBC7B3 looks on a white background.

Color Contrast Check

Large Text (above 18pt) WCAG AA × Fail

Any Text WCAG AA × Fail

Large Text (above 18pt) WCAG AAA × Fail

Any Text WCAG AAA × Fail

Black Background



This preview shows how the Hex color DBC7B3 looks on a black background.

Color Contrast Check

Large Text (above 18pt) WCAG AA ✓ Pass

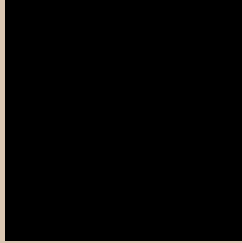
Any Text WCAG AA ✓ Pass

Large Text (above 18pt) WCAG AAA ✓ Pass

Any Text WCAG AAA ✓ Pass

If you want to check with other color combinations, try the [Color Contrast Checker](#).

Hex DBC7B3 Background



This preview shows how black text looks on a background with the Hex color DBC7B3.

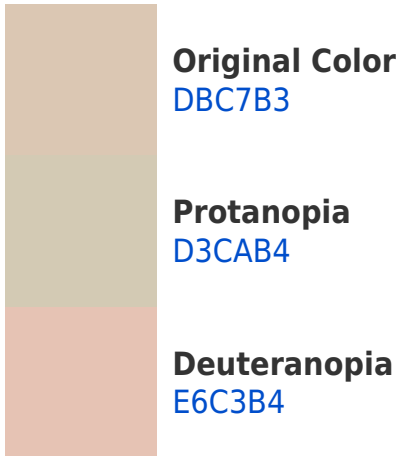


This preview shows how white text looks on a background with the Hex color DBC7B3.

Color Blindness Simulation

Color vision deficiency is a very complex topic, and I could not describe the different causes any better than Wikipedia does, so if you want to learn more, you should check out their [article about color blindness](#).

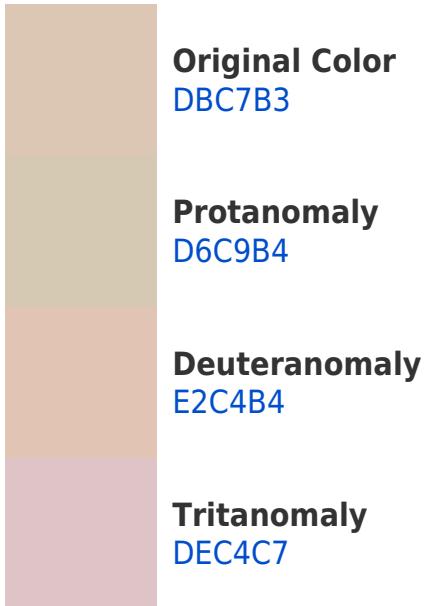
Dichromacy





Tritanopia
DFC3D2

Trichromacy



Monochromacy



CSS Examples

Text

The CSS property to change the color of the text to Hex DBC7B3 is called "color". The color property can be set on classes, ids or directly on the HTML element.

This example shows how text in the color #DBC7B3 looks like.

```
.text, #text, p{  
    color:#DBC7B3  
}
```

If you want to add a text shadow in that color use the text-shadow property, you can generate a text shadow directly with our [CSS Text Shadow Generator](#).

Here you see how black text with a 4 pixel #DBC7B3 colored shadow looks like.

```
.shadow{ text-shadow: 4px 4px 2px #DBC7B3
}
```

Border

The CSS property to change the border of an element to Hex DBC7B3 is called "border". The border property can be set on classes, ids or directly on the HTML element.

This example shows the color as border, it can be applied via the CSS property "border" or "border-color".

```
.border, #border, table{ border:4px solid
#DBC7B3 }
```

If only the border color should be changed use the property border-color.

```
.border{ border-color:#DBC7B3 }
```

If you want to add a box shadow in that color use:

Here you see how a box with a 4 pixel #DBC7B3 colored shadow looks like.

```
.boxshadow{ -moz-box-shadow:4px 4px 4px  
4px #DBC7B3; -webkit-box-shadow:4px 4px  
4px 4px #DBC7B3; box-shadow:4px 4px 4px  
4px #DBC7B3 }
```

Background

The CSS property to change the background color of an element to Hex DBC7B3 is called "background". The background property can be set on classes, ids or directly on the HTML element.

```
.background, #background, body{  
background:#DBC7B3 }
```

If only the background color should be changed can be used:

```
.background{ background-color:#DBC7B3 }
```

This example shows the color as background, it is applied via the CSS property "background".

To optimize and compress your CSS code, you can use our [online CSS compressor and optimizer](#) based on csstidy. If you want to create a linear or radial gradient as background or border, check our [CSS Gradient Generator](#).

Hey! You found this booklet interesting? Support Converting Colors with the new Membership Option!

The pro membership hides all ads, plus gives you double the colors in the color bucket, and more awesome pro features!

[Learn more, Memberships starting at \\$2.50/m!](#)

**Follow me
on Twitter!**

@ConvertingColor