

Converting Colors

Hex(DBC8AF)

Have a look what the booklet for
Hex(DBC8AF) contains.

Hex(DBC8AF)	3
<i>Conversions</i>	4
<i>Details</i>	6
<i>Harmonies</i>	11
<i>Previews</i>	23
<i>Color Blindness Simulation</i>	26
<i>CSS Examples</i>	29

Color

Hex(DBC8AF)

Conversions

Conversions Part 1

Format	Color
Hex	DBC8AF
RGB	219, 200, 175
RGB Percent	86%, 78%, 69%
CMY	0.1412, 0.2157, 0.3137
CMYK	0.00, 0.09, 0.20, 0.14
HSL	34°, 38%, 77%
HSV	34°, 20%, 86%
XYZ	57.6056, 59.4638, 48.9990
YIQ	202.8310, 19.3490, -3.7470

Conversions

Conversions Part 2

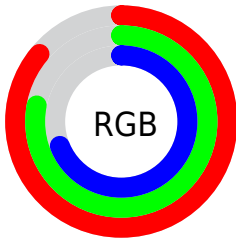
Format	Color
R_{YB}	208, 219, 175
Decimal	14403759
CIE _{Lab}	81.55, 2.68, 14.92
CIE _{LCh}	82, 15.157, 79.822
Y _{xy}	59.4638, 0.3469, 0.3581
Android (android.graphics.Color)	4292593839 (0xFFDBC8AF)
Y _{UV}	202.8310, -13.7207, 14.1802
Hunter-Lab	77.1128, -1.6024, 16.3049

Details

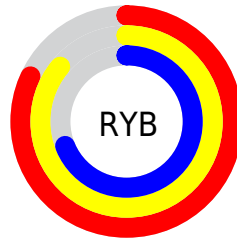
The Hex color **DBC8AF** is a light color, and the websafe version is hex **CCCC99**. A complement of this color would be **AFC2DB**, and the grayscale version is **CBCBCB**.

A 20% lighter version of the original color is **FFFE7**, and **A4927B** is the 20% darker color. If you saturate the color by 10%, you get **DBBF99**, and if you desaturate by 10%, it is **DBD1C5**.

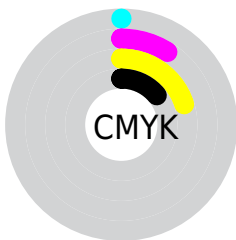
Distribution



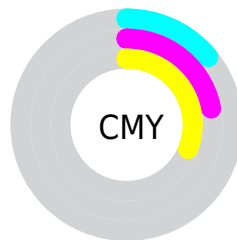
- Red (86%)
- Green (78%)
- Blue (69%)



- Red (82%)
- Yellow (86%)
- Blue (69%)



- Cyan (0%)
- Magenta (9%)
- Yellow (20%)
- Black (14%)



- Cyan (14%)
- Magenta (22%)
- Yellow (31%)

Brightness & Saturation Gradients

These gradients show how the Hex color DBC8AF changes by changing the brightness by 10 percent. The first figure shows a shift by +10% for each color and the second figure -10%.

Similar to the brightness gradients but the following saturation gradients show a change of the Hex color DBC8AF by changing the saturation by 10% instead.

 DBC8AF

FFFFFF

 FFFFE7

 DBC8AF

 BFAD94

 A4927B

 897862

 6F604A

 574833

 3F321E

 291D06

 0F0300

 000000

 DBC8AF

 DBC8AF

 DBBF99

 DBD1C5

 DBB583

 DBDBDB

 DBAC6D

 DBE4F1

 DBA257

 DBEEFF

 DB9942

 DBF7FF

 DB8F2C

 DBFFFF

 DB8616

 DB7C00

Harmonies

Analogous

The Analogous color harmony consists of three colors that are next to each other on the color wheel.



E6C4B5



DBC8AF



CCCDB0

Triad

The Triadic color harmony groups three colors that are evenly spaced from another and form a triangle on the color wheel.



DBC8AF



A7D3D4



D9C4DD

Complementary

The Complementary color scheme is a pair of colors which are on the opposite of each other on the color wheel.



DBC8AF



AFC2DB

Split Complementary

Split-complementary colors differ from the complementary color scheme. The scheme consists of three colors, the original color and two neighbors of the complement color.



C7C9E5



DBC8AF



A9D1E0

Square

The Square scheme is like the rectangle color scheme, but the four colors are evenly spaced on the color wheel.



DBC8AF



AED3C5



B6CDE6



E5C1D0

Rectangle

The Rectangle color scheme consists of four colors that form a rectangle on the color wheel.



DBC8AF



C1CFB5



B6CDE6



D3C6E0

Sweetspot

The Sweet Spot groups the original color and five complimentary colors.



DBC8AF



FFF8F0



DBAFC2



807C77



000000



808080

Same Dimension

The Same Dimension uses a secret algorithm to generate beautiful new colors.



DBC8AF



FFE5C2



D8DBAF



6E6963



AD6300



2E1A00

Inverse Universe

The Inverse Universe completely reimagines the original color for something new.



AFC2DB



C2DCFF



B2AFDB



63676E



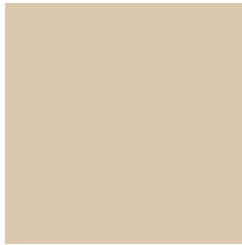
004BAD



00142E

Previews

White Background



This preview shows how the Hex color DBC8AF looks on a white background.

Color Contrast Check

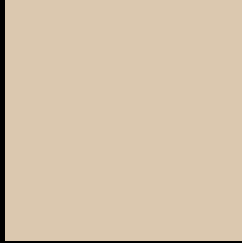
Large Text (above 18pt) WCAG AA × Fail

Any Text WCAG AA × Fail

Large Text (above 18pt) WCAG AAA × Fail

Any Text WCAG AAA × Fail

Black Background



This preview shows how the Hex color DBC8AF looks on a black background.

Color Contrast Check

Large Text (above 18pt) WCAG AA ✓ Pass

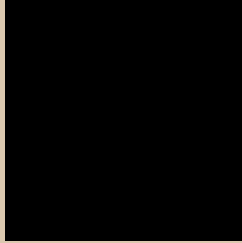
Any Text WCAG AA ✓ Pass

Large Text (above 18pt) WCAG AAA ✓ Pass

Any Text WCAG AAA ✓ Pass

If you want to check with other color combinations, try the [Color Contrast Checker](#).

Hex DBC8AF Background



This preview shows how black text looks on a background with the Hex color DBC8AF.

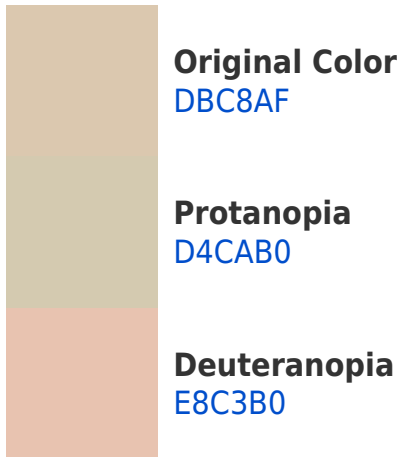


This preview shows how white text looks on a background with the Hex color DBC8AF.

Color Blindness Simulation

Color vision deficiency is a very complex topic, and I could not describe the different causes any better than Wikipedia does, so if you want to learn more, you should check out their [article about color blindness](#).

Dichromacy





Tritanopia
DFC3D2

Trichromacy



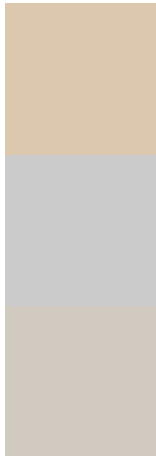
Original Color
DBC8AF

Protanomaly
D7C9B0

Deuteranomaly
E3C5B0

Tritanomaly
DEC5C5

Monochromacy



Original Color
DBC8AF

Achromatopsia
CBCBCB

Achromatomaly
D1CAC1

CSS Examples

Text

The CSS property to change the color of the text to Hex DBC8AF is called "color". The color property can be set on classes, ids or directly on the HTML element.

This example shows how text in the color #DBC8AF looks like.

```
.text, #text, p{  
    color:#DBC8AF  
}
```

If you want to add a text shadow in that color use the text-shadow property, you can generate a text shadow directly with our [CSS Text Shadow Generator](#).

Here you see how black text with a 4 pixel #DBC8AF colored shadow looks like.

```
.shadow{ text-shadow: 4px 4px 2px #DBC8AF
}
```

Border

The CSS property to change the border of an element to Hex DBC8AF is called "border". The border property can be set on classes, ids or directly on the HTML element.

This example shows the color as border, it can be applied via the CSS property "border" or "border-color".

```
.border, #border, table{ border:4px solid
#DBC8AF }
```

If only the border color should be changed use the property `border-color`.

```
.border{ border-color:#DBC8AF }
```

If you want to add a box shadow in that color use:

Here you see how a box with a 4 pixel #DBC8AF colored shadow looks like.

```
.boxshadow{ -moz-box-shadow:4px 4px 4px  
4px #DBC8AF; -webkit-box-shadow:4px 4px  
4px 4px #DBC8AF; box-shadow:4px 4px 4px  
4px #DBC8AF }
```

Background

The CSS property to change the background color of an element to Hex DBC8AF is called "background". The background property can be set on classes, ids or directly on the HTML element.

```
.background, #background, body{  
background:#DBC8AF }
```

If only the background color should be changed can be used:

```
.background{ background-color:#DBC8AF }
```

This example shows the color as background, it is applied via the CSS property "background".

To optimize and compress your CSS code, you can use our [online CSS compressor and optimizer](#) based on csstidy. If you want to create a linear or radial gradient as background or border, check our [CSS Gradient Generator](#).

Hey! You found this booklet interesting? Support Converting Colors with the new Membership Option!

The pro membership hides all ads, plus gives you double the colors in the color bucket, and more awesome pro features!

[Learn more, Memberships starting at \\$2.50/m!](#)

**Follow me
on Twitter!**

@ConvertingColor