

Converting Colors

Hex(DC3772)

Have a look what the booklet for
Hex(DC3772) contains.

Hex(DC3772)	3
<i>Conversions</i>	4
<i>Details</i>	6
<i>Harmonies</i>	11
<i>Previews</i>	23
<i>Color Blindness Simulation</i>	26
<i>CSS Examples</i>	29

Color

Hex(DC3772)

Conversions

Conversions Part 1

Format	Color
Hex	DC3772
RGB	220, 55, 114
RGB Percent	86%, 22%, 45%
CMY	0.1373, 0.7843, 0.5529
CMYK	0.00, 0.75, 0.48, 0.14
HSL	339°, 70%, 54%
HSV	339°, 75%, 86%
XYZ	33.9187, 19.1629, 17.8307
YIQ	111.0610, 79.4010, 53.3290

Conversions

Conversions Part 2

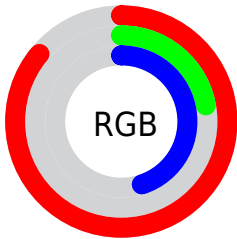
Format	Color
R_{YB}	220, 55, 114
Decimal	14432114
CIE _{Lab}	50.88, 66.39, 5.88
CIE _{LCh}	51, 66.649, 5.066
Yxy	19.1629, 0.4783, 0.2702
Android (android.graphics.Color)	4292622194 (0xFFDC3772)
YUV	111.0610, 1.4489, 95.5395
Hunter-Lab	43.7755, 61.7005, 6.4927

Details

The Hex color **DC3772** is a dark color, and the websafe version is hex **CC3366**. The color can be described as dark muted rose. A complement of this color would be **37DCA1**, and the grayscale version is **6F6F6F**.

A 20% lighter version of the original color is **FF74A6**, and **9F0042** is the 20% darker color. If you saturate the color by 10%, you get **DC2164**, and if you desaturate by 10%, it is **DC4D80**.

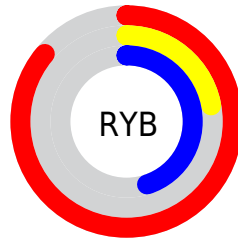
Distribution



Red (86%)

Green (22%)

Blue (45%)



Red (86%)

Yellow (22%)

Blue (45%)

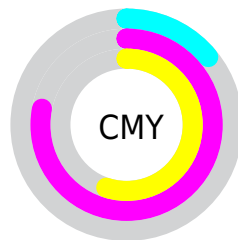


Cyan (0%)

Magenta (75%)

Yellow (48%)

Black (14%)



Cyan (14%)

Magenta (78%)

Yellow (55%)

Brightness & Saturation Gradients

These gradients show how the Hex color DC3772 changes by changing the brightness by 10 percent. The first figure shows a shift by +10% for each color and the second figure -10%.

Similar to the brightness gradients but the following saturation gradients show a change of the Hex color DC3772 by changing the saturation by 10% instead.

 DC3772

 DC3772

FFFFFF

 BD095A

 FF74A6

 9F0042

 FF91C1

 81002D

 FFADDC

 630019

 FFCBF9

 480003

 FFE8FF

 280001

 000000

 DC3772

 DC3772

 DC2164

 DC4D80

 DC0B56

 DC638E

 DC004F

 DC799C

 DC8FAB

 DCA5B9

 DCBBC7

 DCD1D5

 DCE7E3

 DCFDF1

Harmonies

Analogous

The Analogous color harmony consists of three colors that are next to each other on the color wheel.



C447AA



DC3772



D5483B

Triad

The Triadic color harmony groups three colors that are evenly spaced from another and form a triangle on the color wheel.



DC3772



4D8800



008CE1

Complementary

The Complementary color scheme is a pair of colors which are on the opposite of each other on the color wheel.



DC3772



37DCA1

Split Complementary

Split-complementary colors differ from the complementary color scheme. The scheme consists of three colors, the original color and two neighbors of the complement color.



0092B9



DC3772



008F46

Square

The Square scheme is like the rectangle color scheme, but the four colors are evenly spaced on the color wheel.



DC3772



8A7A00



009282



007DEB

Rectangle

The Rectangle color scheme consists of four colors that form a rectangle on the color wheel.



DC3772



C35B16



009282



008ED6

Sweetspot

The Sweet Spot groups the original color and five complimentary colors.



DC3772



FFC4D9



A037DC



805C69



000000



808080

Same Dimension

The Same Dimension uses a secret algorithm to generate beautiful new colors.



DC3772



FF196C



DC4D37



6E6367



AD003E



2E0010

Inverse Universe

The Inverse Universe completely reimagines the original color for something new.



DC3772



FF196C



37C6DC



6E6367



AD003E



2E0010

Previews

White Background



This preview shows how the Hex color DC3772 looks on a white background.

Color Contrast Check

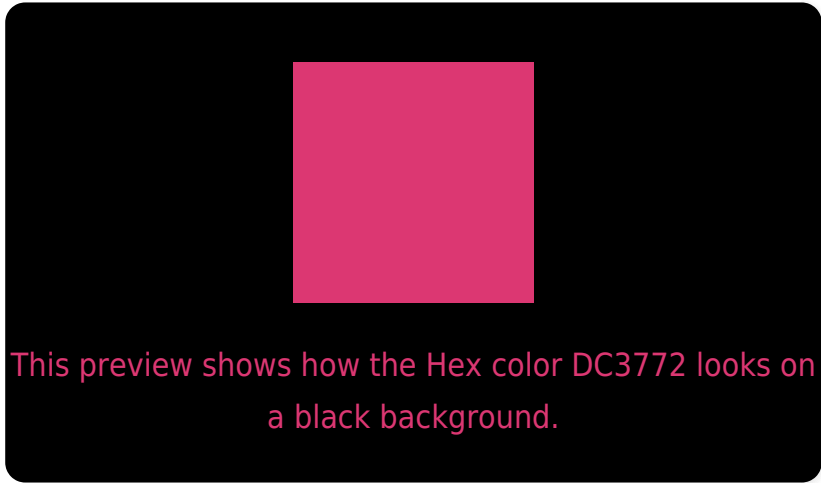
Large Text (above 18pt) WCAG AA ✓ Pass

Any Text WCAG AA × Fail

Large Text (above 18pt) WCAG AAA × Fail

Any Text WCAG AAA × Fail

Black Background



Color Contrast Check

Large Text (above 18pt) WCAG AA ✓ Pass

Any Text WCAG AA ✓ Pass

Large Text (above 18pt) WCAG AAA ✓ Pass

Any Text WCAG AAA × Fail

If you want to check with other color combinations, try the [Color Contrast Checker](#).

Hex DC3772 Background



This preview shows how black text looks on a background with the Hex color DC3772.



This preview shows how white text looks on a background with the Hex color DC3772.

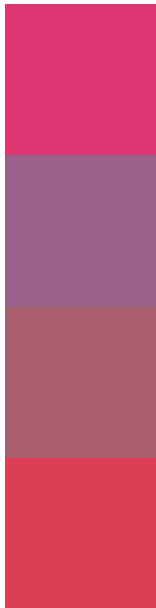
Color Blindness Simulation

Color vision deficiency is a very complex topic, and I could not describe the different causes any better than Wikipedia does, so if you want to learn more, you should check out their [article about color blindness](#).

Dichromacy



Trichromacy



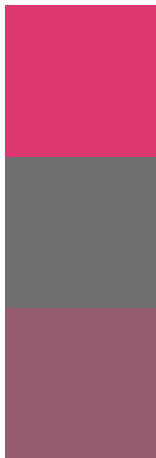
Original Color
DC3772

Protanomaly
99618A

Deuteranomaly
A85E6D

Tritanomaly
DB3E55

Monochromacy



Original Color
DC3772

Achromatopsia
6F6F6F

Achromatomaly
975B70

CSS Examples

Text

The CSS property to change the color of the text to Hex DC3772 is called "color". The color property can be set on classes, ids or directly on the HTML element.

This example shows how text in the color #DC3772 looks like.

```
.text, #text, p{  
    color:#DC3772  
}
```

If you want to add a text shadow in that color use the text-shadow property, you can generate a text shadow directly with our [CSS Text Shadow Generator](#).

Here you see how black text with a 4 pixel #DC3772 colored shadow looks like.

```
.shadow{ text-shadow: 4px 4px 2px #DC3772
}
```

Border

The CSS property to change the border of an element to Hex DC3772 is called "border". The border property can be set on classes, ids or directly on the HTML element.

This example shows the color as border, it can be applied via the CSS property "border" or "border-color".

```
.border, #border, table{ border:4px solid
#DC3772 }
```

If only the border color should be changed use the property `border-color`.

```
.border{ border-color:#DC3772 }
```

If you want to add a box shadow in that color use:

Here you see how a box with a 4 pixel #DC3772 colored shadow looks like.

```
.boxshadow{ -moz-box-shadow:4px 4px 4px  
4px #DC3772; -webkit-box-shadow:4px 4px  
4px 4px #DC3772; box-shadow:4px 4px 4px  
4px #DC3772 }
```

Background

The CSS property to change the background color of an element to Hex DC3772 is called "background". The background property can be set on classes, ids or directly on the HTML element.

```
.background, #background, body{  
background:#DC3772 }
```

If only the background color should be changed can be used:

```
.background{ background-color:#DC3772 }
```

This example shows the color as background, it is applied via the CSS property "background".

To optimize and compress your CSS code, you can use our [online CSS compressor and optimizer](#) based on csstidy. If you want to create a linear or radial gradient as background or border, check our [CSS Gradient Generator](#).

Hey! You found this booklet interesting? Support Converting Colors with the new Membership Option!

The pro membership hides all ads, plus gives you double the colors in the color bucket, and more awesome pro features!

[Learn more, Memberships starting at \\$2.50/m!](#)

**Follow me
on Twitter!**

@ConvertingColor