

# Converting Colors

Hex(DC4682)

Have a look what the booklet for  
Hex(DC4682) contains.

<b>Hex(DC4682)</b> .....	3
<i><b>Conversions</b></i> .....	4
<i><b>Details</b></i> .....	6
<i><b>Harmonies</b></i> .....	11
<i><b>Previews</b></i> .....	23
<i><b>Color Blindness Simulation</b></i> .....	26
<i><b>CSS Examples</b></i> .....	29

# Color

**Hex(DC4682)**

# Conversions

## Conversions Part 1

<b>Format</b>	<b>Color</b>
Hex	DC4682
RGB	220, 70, 130
RGB Percent	86%, 27%, 51%
CMY	0.1373, 0.7255, 0.4902
CMYK	0.00, 0.68, 0.41, 0.14
HSL	336°, 68%, 57%
HSV	336°, 68%, 86%
XYZ	35.7346, 21.2077, 23.3292
YIQ	121.6900, 70.1400, 50.4600

# Conversions

## Conversions Part 2

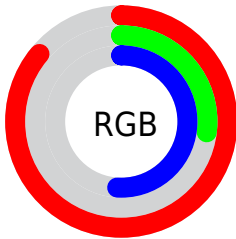
<b>Format</b>	<b>Color</b>
<b>R<sub>YB</sub></b>	220, 70, 130
Decimal	14435970
CIE Lab	53.18, 62.70, -0.41
CIE LCh	53, 62.701, 359.627
Yxy	21.2077, 0.4452, 0.2642
Android (android.graphics.Color)	4292626050 (0xFFDC4682)
YUV	121.6900, 4.0968, 86.2179
Hunter-Lab	46.0518, 57.9193, 2.2008

# Details

The Hex color **DC4682** is a dark color, and the websafe version is hex **CC3366**. The color can be described as middle muted rose. A complement of this color would be **46DCA0**, and the grayscale version is **7A7A7A**.

A 20% lighter version of the original color is **FF80B7**, and **A00051** is the 20% darker color. If you saturate the color by 10%, you get **DC3075**, and if you desaturate by 10%, it is **DC5C8F**.

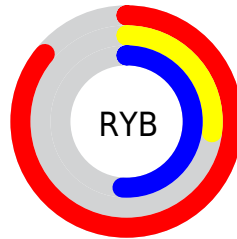
# Distribution



Red (86%)

Green (27%)

Blue (51%)



Red (86%)

Yellow (27%)

Blue (51%)

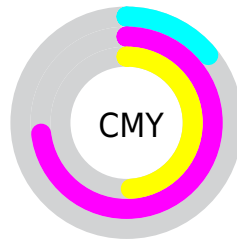


Cyan (0%)

Magenta (68%)

Yellow (41%)

Black (14%)



Cyan (14%)

Magenta (73%)

Yellow (49%)

# Brightness & Saturation Gradients

These gradients show how the Hex color DC4682 changes by changing the brightness by 10 percent. The first figure shows a shift by +10% for each color and the second figure -10%.

Similar to the brightness gradients but the following saturation gradients show a change of the Hex color DC4682 by changing the saturation by 10% instead.



 DC4682

 DC4682

FFFFFF

 BE2569

 FF80B7

 A00051

 FF9CD2

 83003A

 FFB9EF

 660025

 FFD6FF

 4A000F

 FFF4FF

 2D0001

 000000

 DC4682

 DC4682

 DC3075

 DC5C8F

 DC1A68

 DC729C

 DC045A

 DC88AA

 DC0058

 DC9EB7

 DCB4C4

 DCCAD1

 DCE0DE

 DCF6EC

 DCFFF9

# Harmonies

## Analogous

The Analogous color harmony consists of three colors that are next to each other on the color wheel.



BE57B6



DC4682



DB4F4D

# Triad

The Triadic color harmony groups three colors that are evenly spaced from another and form a triangle on the color wheel.



DC4682



638B0D



0092DC

# Complementary

The Complementary color scheme is a pair of colors which are on the opposite of each other on the color wheel.



DC4682



46DCA0

# Split Complementary

Split-complementary colors differ from the complementary color scheme. The scheme consists of three colors, the original color and two neighbors of the complement color.



0097B3



DC4682



009445

# Square

The Square scheme is like the rectangle color scheme, but the four colors are evenly spaced on the color wheel.



DC4682



997C00



00977D



0086EB

# Rectangle

The Rectangle color scheme consists of four colors that form a rectangle on the color wheel.



DC4682



CD5F2D



00977D



0094D1



# Sweetspot

The Sweet Spot groups the original color and five complimentary colors.



DC4682



FFCCE0



A046DC



80616D



000000



808080



# Same Dimension

The Same Dimension uses a secret algorithm to generate beautiful new colors.



DC4682



FF2E82



DC5546



6E6367



AD0045



2E0012



# Inverse Universe

The Inverse Universe completely reimagines the original color for something new.



DC4682



FF2E82



46CDDC



6E6367



AD0045



2E0012



# Previews

## White Background



This preview shows how the Hex color DC4682 looks on a white background.

## Color Contrast Check

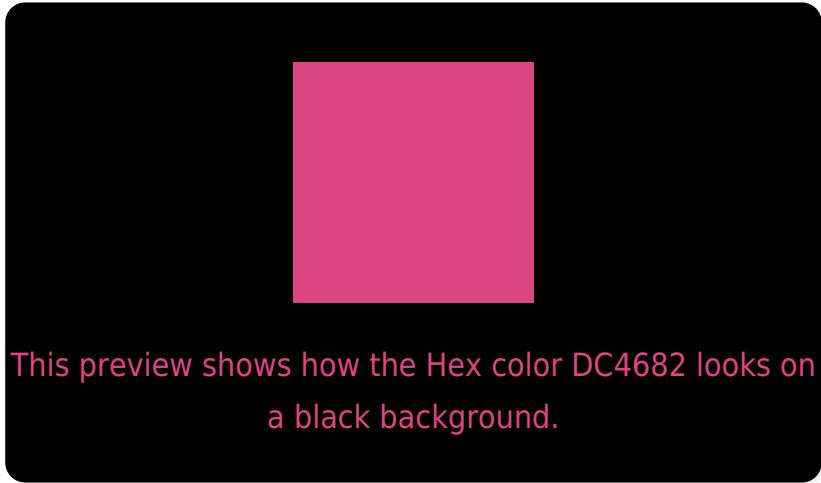
Large Text (above 18pt) WCAG AA ✓ Pass

Any Text WCAG AA × Fail

Large Text (above 18pt) WCAG AAA × Fail

Any Text WCAG AAA × Fail

# Black Background



## Color Contrast Check

Large Text (above 18pt) WCAG AA ✓ Pass

Any Text WCAG AA ✓ Pass

Large Text (above 18pt) WCAG AAA ✓ Pass

Any Text WCAG AAA × Fail

If you want to check with other color combinations, try the [Color Contrast Checker](#).



## Hex DC4682 Background



This preview shows how black text looks on a background with the Hex color DC4682.



This preview shows how white text looks on a background with the Hex color DC4682.

# Color Blindness Simulation

Color vision deficiency is a very complex topic, and I could not describe the different causes any better than Wikipedia does, so if you want to learn more, you should check out their [article about color blindness](#).

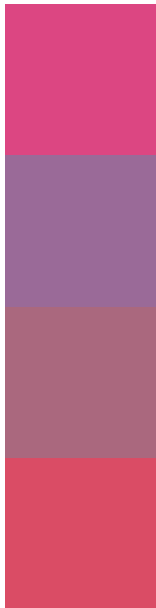
## Dichromacy





**Tritanopia**  
D95055

# Trichromacy



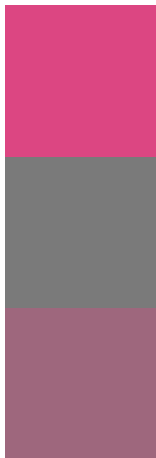
**Original Color**  
DC4682

**Protanomaly**  
9A6A98

**Deuteranomaly**  
AA687E

**Tritanomaly**  
DA4C65

# Monochromacy



**Original Color**  
DC4682

**Achromatopsia**  
7A7A7A

**Achromatomaly**  
9E677D

# CSS Examples

## Text

The CSS property to change the color of the text to Hex DC4682 is called "color". The color property can be set on classes, ids or directly on the HTML element.

This example shows how text in the color #DC4682 looks like.

```
.text, #text, p{  
    color:#DC4682  
}
```

If you want to add a text shadow in that color use the text-shadow property, you can generate a text shadow directly with our [CSS Text Shadow Generator](#).

Here you see how black text with a 4 pixel #DC4682 colored shadow looks like.

```
.shadow{ text-shadow: 4px 4px 2px #DC4682
}
```

## Border

The CSS property to change the border of an element to Hex DC4682 is called "border". The border property can be set on classes, ids or directly on the HTML element.

This example shows the color as border, it can be applied via the CSS property "border" or "border-color".

```
.border, #border, table{ border:4px solid
#DC4682 }
```

If only the border color should be changed use the property `border-color`.

```
.border{ border-color:#DC4682 }
```

If you want to add a box shadow in that color use:

Here you see how a box with a 4 pixel #DC4682 colored shadow looks like.

```
.boxshadow{ -moz-box-shadow:4px 4px 4px  
4px #DC4682; -webkit-box-shadow:4px 4px  
4px 4px #DC4682; box-shadow:4px 4px 4px  
4px #DC4682 }
```

# Background

The CSS property to change the background color of an element to Hex DC4682 is called "background". The background property can be set on classes, ids or directly on the HTML element.

```
.background, #background, body{  
background:#DC4682 }
```

If only the background color should be changed can be used:

```
.background{ background-color:#DC4682 }
```

This example shows the color as background, it is applied via the CSS property "background".

To optimize and compress your CSS code, you can use our [online CSS compressor and optimizer](#) based on csstidy. If you want to create a linear or radial gradient as background or border, check our [CSS Gradient Generator](#).



Hey! You found this booklet interesting? Support Converting Colors with the new Membership Option!

The pro membership hides all ads, plus gives you double the colors in the color bucket, and more awesome pro features!

**[Learn more, Memberships starting at \\$2.50/m!](#)**

**Follow me  
on Twitter!**

@ConvertingColor