

Converting Colors

Hex(DC5B7D)

Have a look what the booklet for
Hex(DC5B7D) contains.

Hex(DC5B7D)	3
<i>Conversions</i>	4
<i>Details</i>	6
<i>Harmonies</i>	11
<i>Previews</i>	23
<i>Color Blindness Simulation</i>	26
<i>CSS Examples</i>	29

Color

Hex(DC5B7D)

Conversions

Conversions Part 1

Format	Color
Hex	DC5B7D
RGB	220, 91, 125
RGB Percent	86%, 36%, 49%
CMY	0.1373, 0.6431, 0.5098
CMYK	0.00, 0.59, 0.43, 0.14
HSL	344°, 65%, 61%
HSV	344°, 59%, 86%
XYZ	36.9580, 24.1785, 22.1211
YIQ	133.4470, 65.9700, 37.9220

Conversions

Conversions Part 2

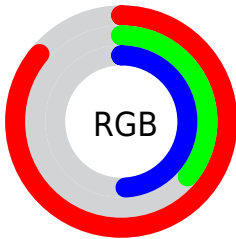
Format	Color
R_{YB}	220, 91, 125
Decimal	14441341
CIE _{Lab}	56.27, 53.45, 7.02
CIE _{LCh}	56, 53.912, 7.485
Yxy	24.1785, 0.4439, 0.2904
Android (android.graphics.Color)	4292631421 (0xFFDC5B7D)
YUV	133.4470, -4.1644, 75.9070
Hunter-Lab	49.1716, 48.1123, 7.7471

Details

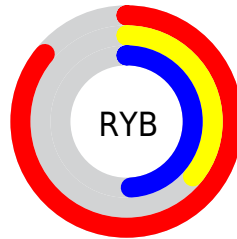
The Hex color **DC5B7D** is a dark color, and the websafe version is hex **CC3366**. The color can be described as middle muted rose. A complement of this color would be **5BDCBA**, and the grayscale version is **858585**.

A 20% lighter version of the original color is **FF92B1**, and **A1214C** is the 20% darker color. If you saturate the color by 10%, you get **DC456D**, and if you desaturate by 10%, it is **DC718D**.

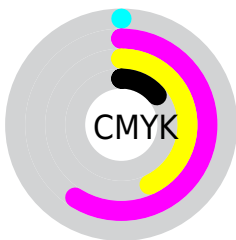
Distribution



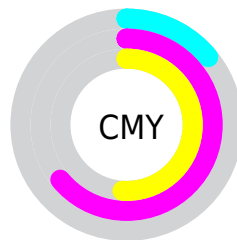
- Red (86%)
- Green (36%)
- Blue (49%)



- Red (86%)
- Yellow (36%)
- Blue (49%)



- Cyan (0%)
- Magenta (59%)
- Yellow (43%)
- Black (14%)



- Cyan (14%)
- Magenta (64%)
- Yellow (51%)

Brightness & Saturation Gradients

These gradients show how the Hex color DC5B7D changes by changing the brightness by 10 percent. The first figure shows a shift by +10% for each color and the second figure -10%.

Similar to the brightness gradients but the following saturation gradients show a change of the Hex color DC5B7D by changing the saturation by 10% instead.

 DC5B7D

 DC5B7D

FFFFFF

 BE3F64

 FF92B1

 A1214C

 FFAECD

 830036

 FFCBE9

 670021

 FFE8FF

 4B0009

 300002

 000000

 DC5B7D

 DC5B7D

 DC456D

 DC718D

 DC2F5D

 DC879D

 DC194C

 DC9DAE

 DC033C

 DCB3BE

 DC003A

 DCC9CE

 DCDFDE

 DCF5EE

 DCFFFF

Harmonies

Analogous

The Analogous color harmony consists of three colors that are next to each other on the color wheel.



C962AC



DC5B7D



D66550

Triad

The Triadic color harmony groups three colors that are evenly spaced from another and form a triangle on the color wheel.



DC5B7D



639437



0095DD

Complementary

The Complementary color scheme is a pair of colors which are on the opposite of each other on the color wheel.



DC5B7D



5BDCBA

Split Complementary

Split-complementary colors differ from the complementary color scheme. The scheme consists of three colors, the original color and two neighbors of the complement color.



009CBF



DC5B7D



009B61

Square

The Square scheme is like the rectangle color scheme, but the four colors are evenly spaced on the color wheel.



DC5B7D



958820



009E92



3988E4

Rectangle

The Rectangle color scheme consists of four colors that form a rectangle on the color wheel.



DC5B7D



C67137



009E92



0098D5

Sweetspot

The Sweet Spot groups the original color and five complimentary colors.



DC5B7D



FFD1DD



BA5BDC



80636B



000000



808080

Same Dimension

The Same Dimension uses a secret algorithm to generate beautiful new colors.



DC5B7D



FF4D7C



DC795B



6E6366



AD002E



2E000C

Inverse Universe

The Inverse Universe completely reimagines the original color for something new.



DC5B7D



FF4D7C



5BBEDC



6E6366



AD002E



2E000C

Previews

White Background



This preview shows how the Hex color DC5B7D looks on a white background.

Color Contrast Check

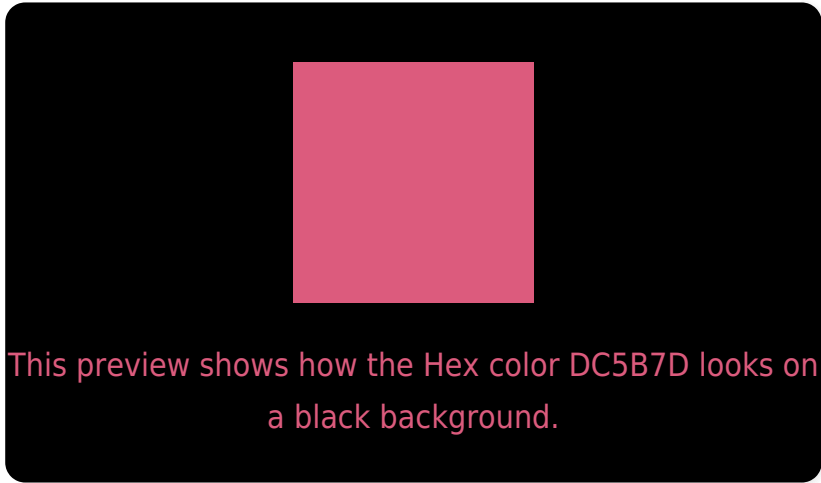
Large Text (above 18pt) WCAG AA ✓ Pass

Any Text WCAG AA × Fail

Large Text (above 18pt) WCAG AAA × Fail

Any Text WCAG AAA × Fail

Black Background



Color Contrast Check

Large Text (above 18pt) WCAG AA ✓ Pass

Any Text WCAG AA ✓ Pass

Large Text (above 18pt) WCAG AAA ✓ Pass

Any Text WCAG AAA × Fail

If you want to check with other color combinations, try the [Color Contrast Checker](#).

Hex DC5B7D Background



This preview shows how black text looks on a background with the Hex color DC5B7D.



This preview shows how white text looks on a background with the Hex color DC5B7D.

Color Blindness Simulation

Color vision deficiency is a very complex topic, and I could not describe the different causes any better than Wikipedia does, so if you want to learn more, you should check out their [article about color blindness](#).

Dichromacy



Original Color
DC5B7D

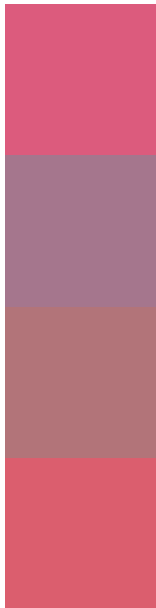
Protanopia
868696

Deuteranopia
9A8277



Tritanopia
DA5F66

Trichromacy



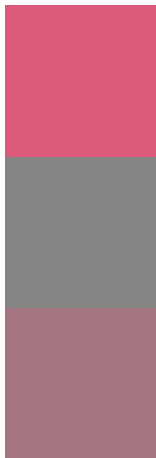
Original Color
DC5B7D

Protanomaly
A5768D

Deuteranomaly
B27479

Tritanomaly
DB5E6E

Monochromacy



Original Color
DC5B7D

Achromatopsia
858585

Achromatomaly
A57682

CSS Examples

Text

The CSS property to change the color of the text to Hex DC5B7D is called "color". The color property can be set on classes, ids or directly on the HTML element.

This example shows how text in the color #DC5B7D looks like.

```
.text, #text, p{  
    color:#DC5B7D  
}
```

If you want to add a text shadow in that color use the text-shadow property, you can generate a text shadow directly with our [CSS Text Shadow Generator](#).

Here you see how black text with a 4 pixel #DC5B7D colored shadow looks like.

```
.shadow{ text-shadow: 4px 4px 2px #DC5B7D
}
```

Border

The CSS property to change the border of an element to Hex DC5B7D is called "border". The border property can be set on classes, ids or directly on the HTML element.

This example shows the color as border, it can be applied via the CSS property "border" or "border-color".

```
.border, #border, table{ border:4px solid
#DC5B7D }
```

If only the border color should be changed use the property `border-color`.

```
.border{ border-color:#DC5B7D }
```

If you want to add a box shadow in that color use:

Here you see how a box with a 4 pixel #DC5B7D colored shadow looks like.

```
.boxshadow{ -moz-box-shadow:4px 4px 4px  
4px #DC5B7D; -webkit-box-shadow:4px 4px  
4px 4px #DC5B7D; box-shadow:4px 4px 4px  
4px #DC5B7D }
```

Background

The CSS property to change the background color of an element to Hex DC5B7D is called "background". The background property can be set on classes, ids or directly on the HTML element.

```
.background, #background, body{  
background:#DC5B7D }
```

If only the background color should be changed can be used:

```
.background{ background-color:#DC5B7D }
```

This example shows the color as background, it is applied via the CSS property "background".

To optimize and compress your CSS code, you can use our [online CSS compressor and optimizer](#) based on csstidy. If you want to create a linear or radial gradient as background or border, check our [CSS Gradient Generator](#).

Hey! You found this booklet interesting? Support Converting Colors with the new Membership Option!

The pro membership hides all ads, plus gives you double the colors in the color bucket, and more awesome pro features!

[Learn more, Memberships starting at \\$2.50/m!](#)

**Follow me
on Twitter!**

@ConvertingColor