

Converting Colors

Hex(DC5C82)

Have a look what the booklet for
Hex(DC5C82) contains.

Hex(DC5C82)	3
<i>Conversions</i>	4
<i>Details</i>	6
<i>Harmonies</i>	11
<i>Previews</i>	23
<i>Color Blindness Simulation</i>	26
<i>CSS Examples</i>	29

Color

Hex(DC5C82)

Conversions

Conversions Part 1

Format	Color
Hex	DC5C82
RGB	220, 92, 130
RGB Percent	86%, 36%, 51%
CMY	0.1373, 0.6392, 0.4902
CMYK	0.00, 0.58, 0.41, 0.14
HSL	342°, 65%, 61%
HSV	342°, 58%, 86%
XYZ	37.3716, 24.4816, 23.8748
YIQ	134.6040, 64.0900, 38.9540

Conversions

Conversions Part 2

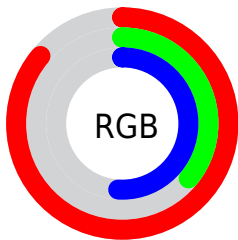
Format	Color
R_{YB}	220, 92, 130
Decimal	14441602
CIE _{Lab}	56.57, 53.51, 4.51
CIE _{LCh}	57, 53.703, 4.820
Yxy	24.4816, 0.4359, 0.2856
Android (android.graphics.Color)	4292631682 (0xFFDC5C82)
YUV	134.6040, -2.2698, 74.8923
Hunter-Lab	49.4789, 48.2336, 6.0263

Details

The Hex color **DC5C82** is a dark color, and the websafe version is hex **FF6699**. The color can be described as middle muted rose. A complement of this color would be **5CDCB6**, and the grayscale version is **878787**.

A 20% lighter version of the original color is **FF93B7**, and **A12251** is the 20% darker color. If you saturate the color by 10%, you get **DC4673**, and if you desaturate by 10%, it is **DC7291**.

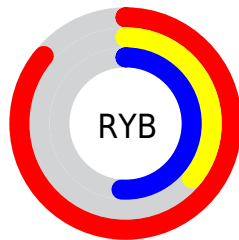
Distribution



Red (86%)

Green (36%)

Blue (51%)



Red (86%)

Yellow (36%)

Blue (51%)

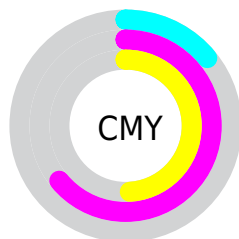


Cyan (0%)

Magenta (58%)

Yellow (41%)

Black (14%)



Cyan (14%)

Magenta (64%)

Yellow (49%)

Brightness & Saturation Gradients

These gradients show how the Hex color DC5C82 changes by changing the brightness by 10 percent. The first figure shows a shift by +10% for each color and the second figure -10%.

Similar to the brightness gradients but the following saturation gradients show a change of the Hex color DC5C82 by changing the saturation by 10% instead.

 DC5C82

 DC5C82

FFFFFF

 BE4069

 FF93B7

 A12251

 FFAFD2

 84003A

 FFCCEF

 670025

 FFE9FF

 4B0010

 310002

 000000

 DC5C82

 DC5C82

 DC4673

 DC7291

 DC3063

 DC88A1

 DC1A54

 DC9EB0

 DC0444

 DCB4C0

 DC0041

 DCCACF

 DCE0DF

 DCF6EE

 DCFFFE

 DCFFFF

Harmonies

Analogous

The Analogous color harmony consists of three colors that are next to each other on the color wheel.



C665B0



DC5C82



D86555

Triad

The Triadic color harmony groups three colors that are evenly spaced from another and form a triangle on the color wheel.



DC5C82



699435



0097DC

Complementary

The Complementary color scheme is a pair of colors which are on the opposite of each other on the color wheel.



DC5C82



5CDCB6

Split Complementary

Split-complementary colors differ from the complementary color scheme. The scheme consists of three colors, the original color and two neighbors of the complement color.



009DBC



DC5C82



119B5E

Square

The Square scheme is like the rectangle color scheme, but the four colors are evenly spaced on the color wheel.



DC5C82



998821



009E8E



2B8AE5

Rectangle

The Rectangle color scheme consists of four colors that form a rectangle on the color wheel.



DC5C82



CA703B



009E8E



009AD3

Sweetspot

The Sweet Spot groups the original color and five complimentary colors.



DC5C82



FFD4E1



B65CDC



80666E



000000



808080

Same Dimension

The Same Dimension uses a secret algorithm to generate beautiful new colors.



DC5C82



FF4D81



DC765C



6E6366



AD0033



2E000E

Inverse Universe

The Inverse Universe completely reimagines the original color for something new.



DC5C82



FF4D81



5CC2DC



6E6366



AD0033



2E000E

Previews

White Background



This preview shows how the Hex color DC5C82 looks on a white background.

Color Contrast Check

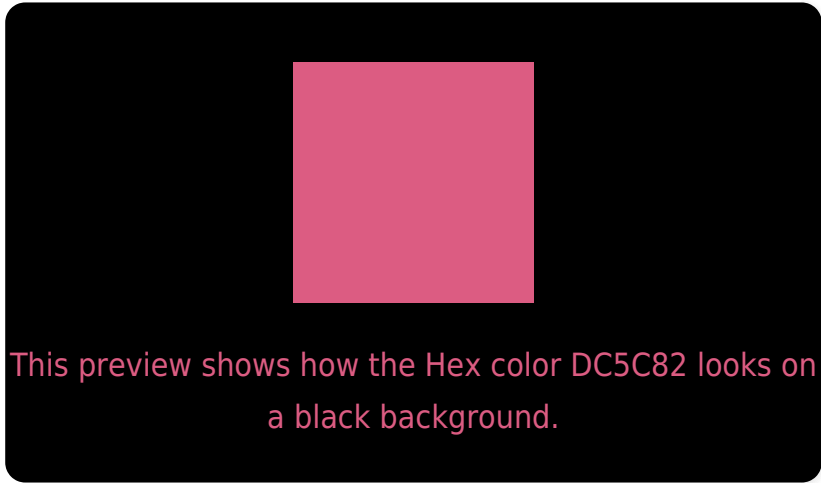
Large Text (above 18pt) WCAG AA ✓ Pass

Any Text WCAG AA × Fail

Large Text (above 18pt) WCAG AAA × Fail

Any Text WCAG AAA × Fail

Black Background



Color Contrast Check

Large Text (above 18pt) WCAG AA ✓ Pass

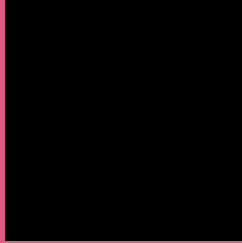
Any Text WCAG AA ✓ Pass

Large Text (above 18pt) WCAG AAA ✓ Pass

Any Text WCAG AAA × Fail

If you want to check with other color combinations, try the [Color Contrast Checker](#).

Hex DC5C82 Background



This preview shows how black text looks on a background with the Hex color DC5C82.



This preview shows how white text looks on a background with the Hex color DC5C82.

Color Blindness Simulation

Color vision deficiency is a very complex topic, and I could not describe the different causes any better than Wikipedia does, so if you want to learn more, you should check out their [article about color blindness](#).

Dichromacy

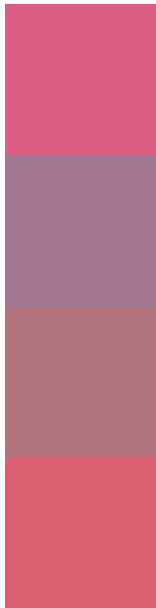


Original Color
DC5C82

Protanopia
85879B

Deuteranopia
9A837C

Trichromacy



Original Color
DC5C82

Protanomaly
A57792

Deuteranomaly
B2757E

Tritanomaly
DB5F71

Monochromacy



Original Color
DC5C82

Achromatopsia
878787

Achromatomaly
A67785

CSS Examples

Text

The CSS property to change the color of the text to Hex DC5C82 is called "color". The color property can be set on classes, ids or directly on the HTML element.

This example shows how text in the color #DC5C82 looks like.

```
.text, #text, p{  
    color:#DC5C82  
}
```

If you want to add a text shadow in that color use the text-shadow property, you can generate a text shadow directly with our [CSS Text Shadow Generator](#).

Here you see how black text with a 4 pixel #DC5C82 colored shadow looks like.

```
.shadow{ text-shadow: 4px 4px 2px #DC5C82
}
```

Border

The CSS property to change the border of an element to Hex DC5C82 is called "border". The border property can be set on classes, ids or directly on the HTML element.

This example shows the color as border, it can be applied via the CSS property "border" or "border-color".

```
.border, #border, table{ border:4px solid
#DC5C82 }
```

If only the border color should be changed use the property `border-color`.

```
.border{ border-color:#DC5C82 }
```

If you want to add a box shadow in that color use:

Here you see how a box with a 4 pixel #DC5C82 colored shadow looks like.

```
.boxshadow{ -moz-box-shadow:4px 4px 4px  
4px #DC5C82; -webkit-box-shadow:4px 4px  
4px 4px #DC5C82; box-shadow:4px 4px 4px  
4px #DC5C82 }
```

Background

The CSS property to change the background color of an element to Hex DC5C82 is called "background". The background property can be set on classes, ids or directly on the HTML element.

```
.background, #background, body{  
background:#DC5C82 }
```

If only the background color should be changed can be used:

```
.background{ background-color:#DC5C82 }
```

This example shows the color as background, it is applied via the CSS property "background".

To optimize and compress your CSS code, you can use our [online CSS compressor and optimizer](#) based on csstidy. If you want to create a linear or radial gradient as background or border, check our [CSS Gradient Generator](#).

Hey! You found this booklet interesting? Support Converting Colors with the new Membership Option!

The pro membership hides all ads, plus gives you double the colors in the color bucket, and more awesome pro features!

[Learn more, Memberships starting at \\$2.50/m!](#)

**Follow me
on Twitter!**

@ConvertingColor