

Converting Colors

Hex(DC6B62)

Have a look what the booklet for
Hex(DC6B62) contains.

Hex(DC6B62)	3
<i>Conversions</i>	4
<i>Details</i>	6
<i>Harmonies</i>	11
<i>Previews</i>	23
<i>Color Blindness Simulation</i>	26
<i>CSS Examples</i>	29

Color

Hex(DC6B62)

Conversions

Conversions Part 1

Format	Color
Hex	DC6B62
RGB	220, 107, 98
RGB Percent	86%, 42%, 38%
CMY	0.1373, 0.5804, 0.6157
CMYK	0.00, 0.51, 0.55, 0.14
HSL	4°, 64%, 62%
HSV	4°, 55%, 86%
XYZ	36.9775, 26.6129, 14.7431
YIQ	139.7610, 70.2370, 21.1570

Conversions

Conversions Part 2

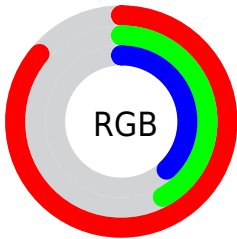
Format	Color
R_{YB}	220, 108, 98
Decimal	14445410
CIE _{Lab}	58.61, 43.40, 25.94
CIE _{LCh}	59, 50.560, 30.874
Yxy	26.6129, 0.4721, 0.3397
Android (android.graphics.Color)	4292635490 (0xFFDC6B62)
YUV	139.7610, -20.5882, 70.3696
Hunter-Lab	51.5877, 37.6685, 19.1670

Details

The Hex color **DC6B62** is a dark color, and the websafe version is hex **CC6666**. A complement of this color would be **62D3DC**, and the grayscale version is **8C8C8C**.

A 20% lighter version of the original color is **FFA195**, and **A03733** is the 20% darker color. If you saturate the color by 10%, you get **DC574C**, and if you desaturate by 10%, it is **DC7F78**.

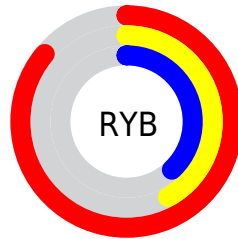
Distribution



Red (86%)

Green (42%)

Blue (38%)



Red (86%)

Yellow (42%)

Blue (38%)

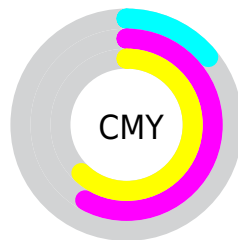


Cyan (0%)

Magenta (51%)

Yellow (55%)

Black (14%)



Cyan (14%)

Magenta (58%)

Yellow (62%)

Brightness & Saturation Gradients

These gradients show how the Hex color DC6B62 changes by changing the brightness by 10 percent. The first figure shows a shift by +10% for each color and the second figure -10%.

Similar to the brightness gradients but the following saturation gradients show a change of the Hex color DC6B62 by changing the saturation by 10% instead.

 DC6B62

 DC6B62

FFFFFF

 BE514A

 FFA195

 A03733

 FFBDAF

 831B1E

 FFD9CB

 660007

 FFF6E7

 4A0000

 300002

 000000

 DC6B62

 DC6B62

 DC574C

 DC7F78

 DC4236

 DC948E

 DC2E20

 DCA8A4

 DC190A

 DCBDBA

 DC1000

 DCD1D0

 DCE5E6

 DCFAFC

 DCFFFF

Harmonies

Analogous

The Analogous color harmony consists of three colors that are next to each other on the color wheel.



DC658D



DC6B62



C77B3F

Triad

The Triadic color harmony groups three colors that are evenly spaced from another and form a triangle on the color wheel.



DC6B62



399F60



2D91E6

Complementary

The Complementary color scheme is a pair of colors which are on the opposite of each other on the color wheel.



DC6B62



62D3DC

Split Complementary

Split-complementary colors differ from the complementary color scheme. The scheme consists of three colors, the original color and two neighbors of the complement color.



009DDA



DC6B62



00A38D

Square

The Square scheme is like the rectangle color scheme, but the four colors are evenly spaced on the color wheel.



DC6B62



77983C



00A2B9



9081D9

Rectangle

The Rectangle color scheme consists of four colors that form a rectangle on the color wheel.



DC6B62



B18631



00A2B9



0096E4

Sweetspot

The Sweet Spot groups the original color and five complimentary colors.



DC6B62



FFD7D4



DC62D4



806866



000000



808080

Same Dimension

The Same Dimension uses a secret algorithm to generate beautiful new colors.



DC6B62



FF6154



DCA762



6E6363



AD0D00



2E0300

Inverse Universe

The Inverse Universe completely reimagines the original color for something new.



62D3DC



54F2FF



6297DC



636D6E



00A1AD



002B2E

Previews

White Background



This preview shows how the Hex color DC6B62 looks on a white background.

Color Contrast Check

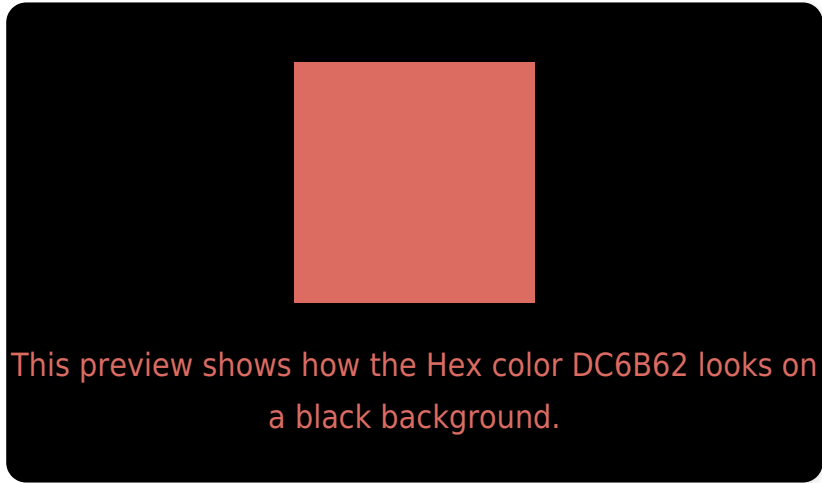
Large Text (above 18pt) WCAG AA ✓ Pass

Any Text WCAG AA × Fail

Large Text (above 18pt) WCAG AAA × Fail

Any Text WCAG AAA × Fail

Black Background



Color Contrast Check

Large Text (above 18pt) WCAG AA ✓ Pass

Any Text WCAG AA ✓ Pass

Large Text (above 18pt) WCAG AAA ✓ Pass

Any Text WCAG AAA × Fail

If you want to check with other color combinations, try the [Color Contrast Checker](#).

Hex DC6B62 Background



This preview shows how black text looks on a background with the Hex color DC6B62.



This preview shows how white text looks on a background with the Hex color DC6B62.

Color Blindness Simulation

Color vision deficiency is a very complex topic, and I could not describe the different causes any better than Wikipedia does, so if you want to learn more, you should check out their [article about color blindness](#).

Dichromacy



Original Color
DC6B62

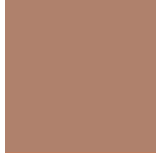
Protanopia
968D71

Deuteranopia
AA875D

Trichromacy



Original Color
DC6B62



Protanomaly
AF816C



Deuteranomaly
BC7D5F

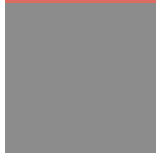


Tritanomaly
DD6A6B

Monochromacy



Original Color
DC6B62



Achromatopsia
8C8C8C



Achromatomaly
A9807D

CSS Examples

Text

The CSS property to change the color of the text to Hex DC6B62 is called "color". The color property can be set on classes, ids or directly on the HTML element.

This example shows how text in the color #DC6B62 looks like.

```
.text, #text, p{  
    color:#DC6B62  
}
```

If you want to add a text shadow in that color use the text-shadow property, you can generate a text shadow directly with our [CSS Text Shadow Generator](#).

Here you see how black text with a 4 pixel #DC6B62 colored shadow looks like.

```
.shadow{ text-shadow: 4px 4px 2px #DC6B62
}
```

Border

The CSS property to change the border of an element to Hex DC6B62 is called "border". The border property can be set on classes, ids or directly on the HTML element.

This example shows the color as border, it can be applied via the CSS property "border" or "border-color".

```
.border, #border, table{ border:4px solid
#DC6B62 }
```

If only the border color should be changed use the property `border-color`.

```
.border{ border-color:#DC6B62 }
```

If you want to add a box shadow in that color use:

Here you see how a box with a 4 pixel #DC6B62 colored shadow looks like.

```
.boxshadow{ -moz-box-shadow:4px 4px 4px  
4px #DC6B62; -webkit-box-shadow:4px 4px  
4px 4px #DC6B62; box-shadow:4px 4px 4px  
4px #DC6B62 }
```

Background

The CSS property to change the background color of an element to Hex DC6B62 is called "background". The background property can be set on classes, ids or directly on the HTML element.

```
.background, #background, body{  
background:#DC6B62 }
```

If only the background color should be changed can be used:

```
.background{ background-color:#DC6B62 }
```

This example shows the color as background, it is applied via the CSS property "background".

To optimize and compress your CSS code, you can use our [online CSS compressor and optimizer](#) based on csstidy. If you want to create a linear or radial gradient as background or border, check our [CSS Gradient Generator](#).

Hey! You found this booklet interesting? Support Converting Colors with the new Membership Option!

The pro membership hides all ads, plus gives you double the colors in the color bucket, and more awesome pro features!

[Learn more, Memberships starting at \\$2.50/m!](#)

**Follow me
on Twitter!**

@ConvertingColor