

# Converting Colors

Hex(DC7268)

Have a look what the booklet for  
Hex(DC7268) contains.

<b>Hex(DC7268)</b> .....	3
<b><i>Conversions</i></b> .....	4
<b><i>Details</i></b> .....	6
<b><i>Harmonies</i></b> .....	11
<b><i>Previews</i></b> .....	23
<b><i>Color Blindness Simulation</i></b> .....	26
<b><i>CSS Examples</i></b> .....	29

# Color

Hex(DC7268)

# Conversions

## Conversions Part 1

<b>Format</b>	<b>Color</b>
Hex	DC7268
RGB	220, 114, 104
RGB Percent	86%, 45%, 41%
CMY	0.1373, 0.5529, 0.5922
CMYK	0.00, 0.48, 0.53, 0.14
HSL	5°, 62%, 64%
HSV	5°, 53%, 86%
XYZ	38.0312, 28.2497, 16.5450
YIQ	144.5540, 66.3860, 19.3620

# Conversions

## Conversions Part 2

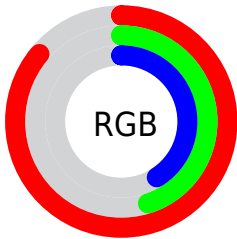
<b>Format</b>	<b>Color</b>
R <sub>Y</sub> B	220, 115, 104
Decimal	14447208
CIE Lab	60.11, 40.37, 24.51
CIE LCh	60, 47.223, 31.261
Yxy	28.2497, 0.4592, 0.3411
Android (android.graphics.Color)	4292637288 (0xFFDC7268)
YUV	144.5540, -19.9931, 66.1661
Hunter-Lab	53.1505, 34.7102, 18.7492

# Details

The Hex color **DC7268** is a dark color, and the websafe version is hex **CC6666**. A complement of this color would be **68D2DC**, and the grayscale version is **919191**.

A 20% lighter version of the original color is **FFA89B**, and **A13E39** is the 20% darker color. If you saturate the color by 10%, you get **DC5E52**, and if you desaturate by 10%, it is **DC867E**.

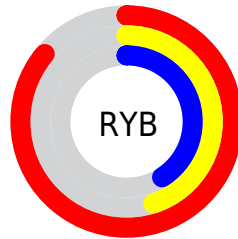
# Distribution



Red (86%)

Green (45%)

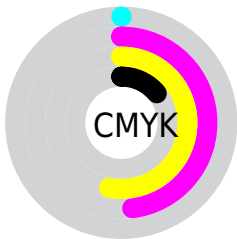
Blue (41%)



Red (86%)

Yellow (45%)

Blue (41%)

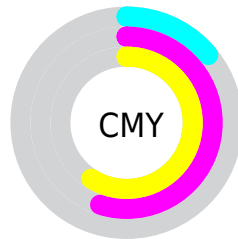


Cyan (0%)

Magenta (48%)

Yellow (53%)

Black (14%)



Cyan (14%)

Magenta (55%)

Yellow (59%)

# Brightness & Saturation Gradients

These gradients show how the Hex color DC7268 changes by changing the brightness by 10 percent. The first figure shows a shift by +10% for each color and the second figure -10%.

Similar to the brightness gradients but the following saturation gradients show a change of the Hex color DC7268 by changing the saturation by 10% instead.



 DC7268

 DC7268

FFFFFF

 BE5850

 FFA89B

 A13E39

 FFC4B6

 842423

 FFE0D2

 67050E

 FFFDEE

 4B0000

 320002

 000000

 DC7268

 DC7268

 DC5E52

 DC867E

 DC4A3C

 DC9A94

 DC3626

 DCAEAA

 DC2210

 DCC2C0

 DC1300

 DCD7D6

 DCEBEC

 DCFFFF

# Harmonies

## Analogous

The Analogous color harmony consists of three colors that are next to each other on the color wheel.



DC6D91



DC7268



C88048

# Triad

The Triadic color harmony groups three colors that are evenly spaced from another and form a triangle on the color wheel.



DC7268



45A267



4495E4

# Complementary

The Complementary color scheme is a pair of colors which are on the opposite of each other on the color wheel.



DC7268



68D2DC

# Split Complementary

Split-complementary colors differ from the complementary color scheme. The scheme consists of three colors, the original color and two neighbors of the complement color.



00A0D9



DC7268



00A691

# Square

The Square scheme is like the rectangle color scheme, but the four colors are evenly spaced on the color wheel.



DC7268



7D9B47



00A5BB



9685D8

# Rectangle

The Rectangle color scheme consists of four colors that form a rectangle on the color wheel.



DC7268



B38A3C



00A5BB



0099E3

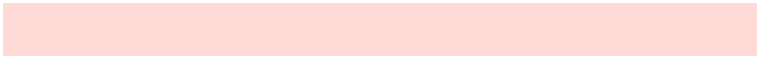


# Sweetspot

The Sweet Spot groups the original color and five complimentary colors.



DC7268



FFDAD6



DC68D2



806967



000000



808080



# Same Dimension

The Same Dimension uses a secret algorithm to generate beautiful new colors.



DC7268



FF6C5E



DCAC68



6E6463



AD0F00



2E0400



# Inverse Universe

The Inverse Universe completely reimagines the original color for something new.



68D2DC



5EF1FF



6898DC



636D6E



009EAD



002A2E



# Previews

## White Background



This preview shows how the Hex color DC7268 looks on a white background.

## Color Contrast Check

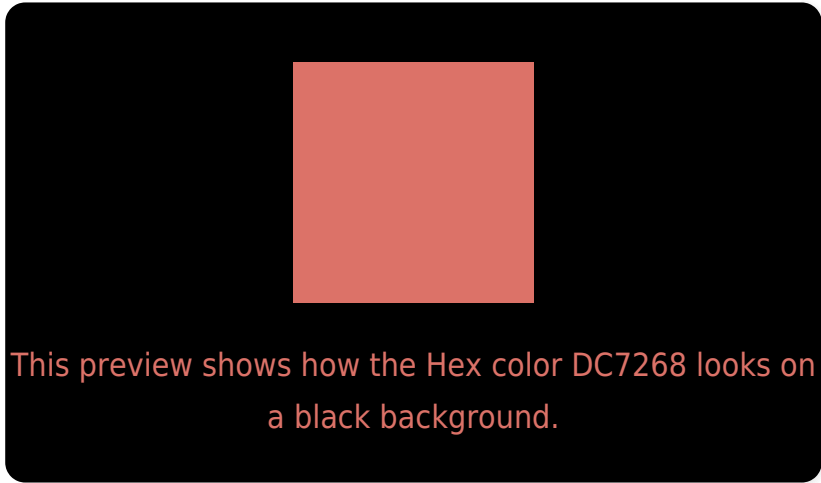
Large Text (above 18pt) WCAG AA ✓ Pass

Any Text WCAG AA × Fail

Large Text (above 18pt) WCAG AAA × Fail

Any Text WCAG AAA × Fail

# Black Background



## Color Contrast Check

Large Text (above 18pt) WCAG AA ✓ Pass

Any Text WCAG AA ✓ Pass

Large Text (above 18pt) WCAG AAA ✓ Pass

Any Text WCAG AAA × Fail

If you want to check with other color combinations, try the [Color Contrast Checker](#).



## Hex DC7268 Background



This preview shows how black text looks on a background with the Hex color DC7268.

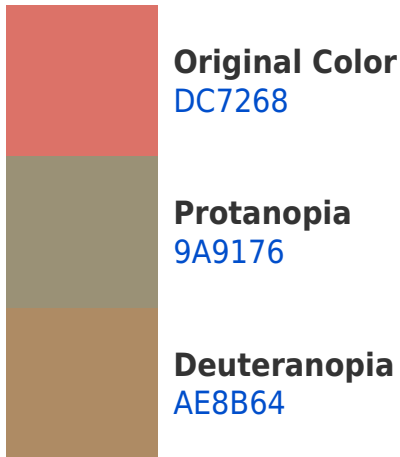


This preview shows how white text looks on a background with the Hex color DC7268.

# Color Blindness Simulation

Color vision deficiency is a very complex topic, and I could not describe the different causes any better than Wikipedia does, so if you want to learn more, you should check out their [article about color blindness](#).

## Dichromacy

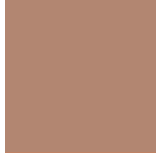




# Trichromacy



**Original Color**  
DC7268



**Protanomaly**  
B28671



**Deuteranomaly**  
BF8265

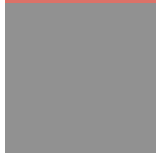


**Tritanomaly**  
DD7172

# Monochromacy



**Original Color**  
DC7268



**Achromatopsia**  
919191



**Achromatomaly**  
AC8682

# CSS Examples

## Text

The CSS property to change the color of the text to Hex DC7268 is called "color". The color property can be set on classes, ids or directly on the HTML element.

This example shows how text in the color #DC7268 looks like.

```
.text, #text, p{  
    color:#DC7268  
}
```

If you want to add a text shadow in that color use the text-shadow property, you can generate a text shadow directly with our [CSS Text Shadow Generator](#).

Here you see how black text with a 4 pixel #DC7268 colored shadow looks like.

```
.shadow{ text-shadow: 4px 4px 2px #DC7268
}
```

## Border

The CSS property to change the border of an element to Hex DC7268 is called "border". The border property can be set on classes, ids or directly on the HTML element.

This example shows the color as border, it can be applied via the CSS property "border" or "border-color".

```
.border, #border, table{ border:4px solid
#DC7268 }
```

If only the border color should be changed use the property `border-color`.

```
.border{ border-color:#DC7268 }
```

If you want to add a box shadow in that color use:

Here you see how a box with a 4 pixel #DC7268 colored shadow looks like.

```
.boxshadow{ -moz-box-shadow:4px 4px 4px  
4px #DC7268; -webkit-box-shadow:4px 4px  
4px 4px #DC7268; box-shadow:4px 4px 4px  
4px #DC7268 }
```

# Background

The CSS property to change the background color of an element to Hex DC7268 is called "background". The background property can be set on classes, ids or directly on the HTML element.

```
.background, #background, body{  
background:#DC7268 }
```

If only the background color should be changed can be used:

```
.background{ background-color:#DC7268 }
```

This example shows the color as background, it is applied via the CSS property "background".

To optimize and compress your CSS code, you can use our [online CSS compressor and optimizer](#) based on csstidy. If you want to create a linear or radial gradient as background or border, check our [CSS Gradient Generator](#).



Hey! You found this booklet interesting? Support Converting Colors with the new Membership Option!

The pro membership hides all ads, plus gives you double the colors in the color bucket, and more awesome pro features!

**[Learn more, Memberships starting at \\$2.50/m!](#)**

**Follow me  
on Twitter!**

@ConvertingColor