

Converting Colors

Hex(DC7A70)

Have a look what the booklet for
Hex(DC7A70) contains.

Hex(DC7A70)	3
<i>Conversions</i>	4
<i>Details</i>	6
<i>Harmonies</i>	11
<i>Previews</i>	23
<i>Color Blindness Simulation</i>	26
<i>CSS Examples</i>	29

Color

Hex(DC7A70)

Conversions

Conversions Part 1

Format	Color
Hex	DC7A70
RGB	220, 122, 112
RGB Percent	86%, 48%, 44%
CMY	0.1373, 0.5216, 0.5608
CMYK	0.00, 0.45, 0.49, 0.14
HSL	6°, 61%, 65%
HSV	6°, 49%, 86%
XYZ	39.3994, 30.3046, 19.1020
YIQ	150.1620, 61.6180, 17.6660

Conversions

Conversions Part 2

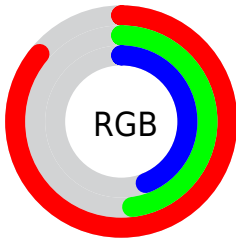
Format	Color
R_{YB}	220, 123, 112
Decimal	14449264
CIE _{Lab}	61.92, 36.96, 22.38
CIE _{LCh}	62, 43.209, 31.189
Yxy	30.3046, 0.4437, 0.3412
Android (android.graphics.Color)	4292639344 (0xFFDC7A70)
YUV	150.1620, -18.8139, 61.2479
Hunter-Lab	55.0496, 31.4169, 17.9613

Details

The Hex color **DC7A70** is a light color, and the websafe version is hex **CC6666**. A complement of this color would be **70D2DC**, and the grayscale version is **969696**.

A 20% lighter version of the original color is **FFB0A4**, and **A14740** is the 20% darker color. If you saturate the color by 10%, you get **DC665A**, and if you desaturate by 10%, it is **DC8E86**.

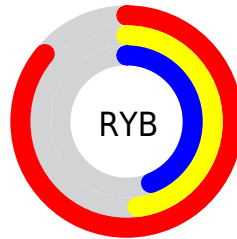
Distribution



Red (86%)

Green (48%)

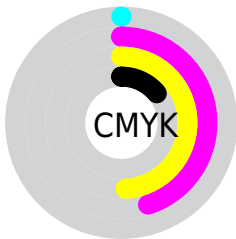
Blue (44%)



Red (86%)

Yellow (48%)

Blue (44%)

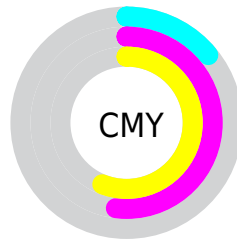


Cyan (0%)

Magenta (45%)

Yellow (49%)

Black (14%)



Cyan (14%)

Magenta (52%)

Yellow (56%)

Brightness & Saturation Gradients

These gradients show how the Hex color DC7A70 changes by changing the brightness by 10 percent. The first figure shows a shift by +10% for each color and the second figure -10%.

Similar to the brightness gradients but the following saturation gradients show a change of the Hex color DC7A70 by changing the saturation by 10% instead.

 DC7A70

 DC7A70

FFFFFF

 BE6058

 FF80A4

 A14740

 FFCCBF

 842E2A

 FFE8DB

 681315

 FFFFF7

 4D0000

 330001

 060000

 000000

 DC7A70

 DC7A70

 DC665A

 DC8E86

 DC5244

 DCA29C

 DC3E2E

 DCB6B2

 DC2A18

 DCCAC8

 DC1602

 DCDEDE

 DC1400

 DCF2F4

 DCFFFF

Harmonies

Analogous

The Analogous color harmony consists of three colors that are next to each other on the color wheel.



DC7696



DC7A70



CA8653

Triad

The Triadic color harmony groups three colors that are evenly spaced from another and form a triangle on the color wheel.



DC7A70



53A66F



5799E2

Complementary

The Complementary color scheme is a pair of colors which are on the opposite of each other on the color wheel.



DC7A70



70D2DC

Split Complementary

Split-complementary colors differ from the complementary color scheme. The scheme consists of three colors, the original color and two neighbors of the complement color.



00A3D8



DC7A70



00A996

Square

The Square scheme is like the rectangle color scheme, but the four colors are evenly spaced on the color wheel.



DC7A70



849F52



00A8BC



9B8BD7

Rectangle

The Rectangle color scheme consists of four colors that form a rectangle on the color wheel.



DC7A70



B79049



00A8BC



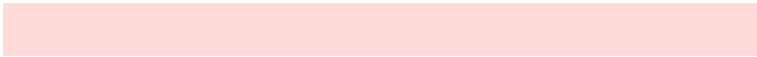
369DE1

Sweetspot

The Sweet Spot groups the original color and five complimentary colors.



DC7A70



FFDCD9



DC70D3



806B69



000000



808080

Same Dimension

The Same Dimension uses a secret algorithm to generate beautiful new colors.



DC7A70



FF7669



DCAF70



6E6463



AD1000



2E0400

Inverse Universe

The Inverse Universe completely reimagines the original color for something new.



70D2DC



69F1FF



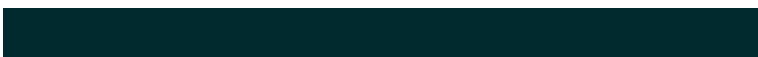
709DDC



636D6E



009DAD



002A2E

Previews

White Background



This preview shows how the Hex color DC7A70 looks on a white background.

Color Contrast Check

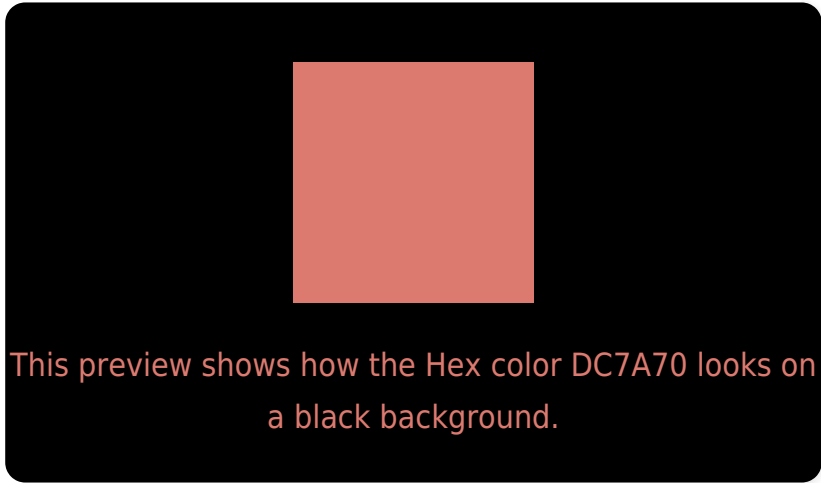
Large Text (above 18pt) WCAG AA × Fail

Any Text WCAG AA × Fail

Large Text (above 18pt) WCAG AAA × Fail

Any Text WCAG AAA × Fail

Black Background



Color Contrast Check

Large Text (above 18pt) WCAG AA ✓ Pass

Any Text WCAG AA ✓ Pass

Large Text (above 18pt) WCAG AAA ✓ Pass

Any Text WCAG AAA ✓ Pass

If you want to check with other color combinations, try the [Color Contrast Checker](#).

Hex DC7A70 Background



This preview shows how black text looks on a background with the Hex color DC7A70.

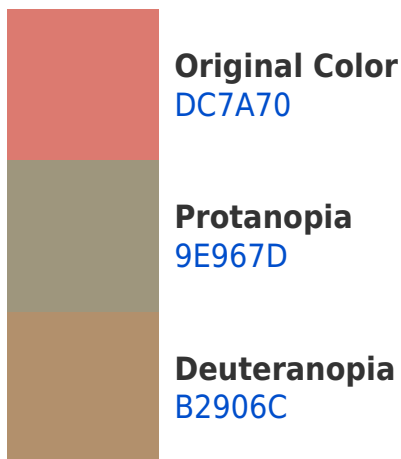


This preview shows how white text looks on a background with the Hex color DC7A70.

Color Blindness Simulation

Color vision deficiency is a very complex topic, and I could not describe the different causes any better than Wikipedia does, so if you want to learn more, you should check out their [article about color blindness](#).

Dichromacy



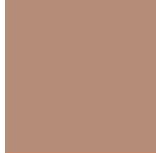


Tritanopia
DD7880

Trichromacy



Original Color
DC7A70



Protanomaly
B58C78



Deuteranomaly
C1886D

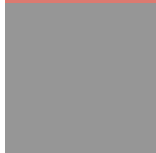


Tritanomaly
DD797A

Monochromacy



Original Color
DC7A70



Achromatopsia
969696



Achromatomaly
AF8C88

CSS Examples

Text

The CSS property to change the color of the text to Hex DC7A70 is called "color". The color property can be set on classes, ids or directly on the HTML element.

This example shows how text in the color #DC7A70 looks like.

```
.text, #text, p{  
    color:#DC7A70  
}
```

If you want to add a text shadow in that color use the text-shadow property, you can generate a text shadow directly with our [CSS Text Shadow Generator](#).

Here you see how black text with a 4 pixel #DC7A70 colored shadow looks like.

```
.shadow{ text-shadow: 4px 4px 2px #DC7A70
}
```

Border

The CSS property to change the border of an element to Hex DC7A70 is called "border". The border property can be set on classes, ids or directly on the HTML element.

This example shows the color as border, it can be applied via the CSS property "border" or "border-color".

```
.border, #border, table{ border:4px solid
#DC7A70 }
```

If only the border color should be changed use the property `border-color`.

```
.border{ border-color:#DC7A70 }
```

If you want to add a box shadow in that color use:

Here you see how a box with a 4 pixel #DC7A70 colored shadow looks like.

```
.boxshadow{ -moz-box-shadow:4px 4px 4px  
4px #DC7A70; -webkit-box-shadow:4px 4px  
4px 4px #DC7A70; box-shadow:4px 4px 4px  
4px #DC7A70 }
```

Background

The CSS property to change the background color of an element to Hex DC7A70 is called "background". The background property can be set on classes, ids or directly on the HTML element.

```
.background, #background, body{  
background:#DC7A70 }
```

If only the background color should be changed can be used:

```
.background{ background-color:#DC7A70 }
```

This example shows the color as background, it is applied via the CSS property "background".

To optimize and compress your CSS code, you can use our [online CSS compressor and optimizer](#) based on csstidy. If you want to create a linear or radial gradient as background or border, check our [CSS Gradient Generator](#).

Hey! You found this booklet interesting? Support Converting Colors with the new Membership Option!

The pro membership hides all ads, plus gives you double the colors in the color bucket, and more awesome pro features!

[Learn more, Memberships starting at \\$2.50/m!](#)

**Follow me
on Twitter!**

@ConvertingColor