

Converting Colors

Hex(DC899C)

Have a look what the booklet for
Hex(DC899C) contains.

Hex(DC899C)	3
<i>Conversions</i>	4
<i>Details</i>	6
<i>Harmonies</i>	11
<i>Previews</i>	23
<i>Color Blindness Simulation</i>	26
<i>CSS Examples</i>	29

Color

Hex(DC899C)

Conversions

Conversions Part 1

Format	Color
Hex	DC899C
RGB	220, 137, 156
RGB Percent	86%, 54%, 61%
CMY	0.1373, 0.4627, 0.3882
CMYK	0.00, 0.38, 0.29, 0.14
HSL	346°, 54%, 70%
HSV	346°, 38%, 86%
XYZ	44.4616, 35.5073, 35.9627
YIQ	163.9830, 43.3690, 23.5050

Conversions

Conversions Part 2

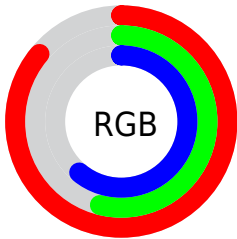
Format	Color
R _Y B	220, 137, 156
Decimal	14453148
CIE Lab	66.14, 34.08, 3.38
CIE LCh	66, 34.245, 5.656
Yxy	35.5073, 0.3835, 0.3063
Android (android.graphics.Color)	4292643228 (0xFFDC899C)
YUV	163.9830, -3.9356, 49.1269
Hunter-Lab	59.5880, 28.9090, 5.9287

Details

The Hex color **DC899C** is a light color, and the websafe version is hex **CC9999**. A complement of this color would be **89DCC9**, and the grayscale version is **A4A4A4**.

A 20% lighter version of the original color is **FFBFD2**, and **A35569** is the 20% darker color. If you saturate the color by 10%, you get **DC738B**, and if you desaturate by 10%, it is **DC9FAD**.

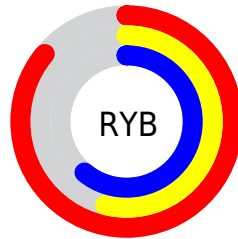
Distribution



Red (86%)

Green (54%)

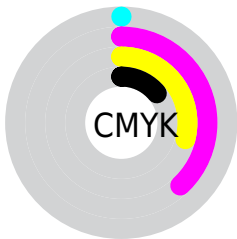
Blue (61%)



Red (86%)

Yellow (54%)

Blue (61%)

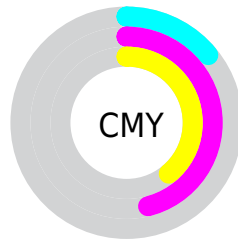


Cyan (0%)

Magenta (38%)

Yellow (29%)

Black (14%)



Cyan (14%)

Magenta (46%)

Yellow (39%)

Brightness & Saturation Gradients

These gradients show how the Hex color DC899C changes by changing the brightness by 10 percent. The first figure shows a shift by +10% for each color and the second figure -10%.

Similar to the brightness gradients but the following saturation gradients show a change of the Hex color DC899C by changing the saturation by 10% instead.

 DC899C

 DC899C

FFFFFF

 BF6F82

 FFBFD2

 A35569

 FFDCEF

 873D51

 FFF8FF

 6C243A

 520925

 39000F

 1F0001

 000000

 DC899C

 DC899C

 DC738B

 DC9FAD

 DC5D7A

 DCB5BE

 DC4769

 DCCBCF

 DC3158

 DCE1E0

 DC1B47

 DCF7F1

 DC0536

 DCFFFF

 DC0032

Harmonies

Analogous

The Analogous color harmony consists of three colors that are next to each other on the color wheel.



CC8DBB



DC899C



DA8D7E

Triad

The Triadic color harmony groups three colors that are evenly spaced from another and form a triangle on the color wheel.



DC899C



8FAA6E



4CABD8

Complementary

The Complementary color scheme is a pair of colors which are on the opposite of each other on the color wheel.



DC899C



89DCC9

Split Complementary

Split-complementary colors differ from the complementary color scheme. The scheme consists of three colors, the original color and two neighbors of the complement color.



2AB0C4



DC899C



6AAF86

Square

The Square scheme is like the rectangle color scheme, but the four colors are evenly spaced on the color wheel.



DC899C



B0A163



42B1A6



7FA2DE

Rectangle

The Rectangle color scheme consists of four colors that form a rectangle on the color wheel.



DC899C



D1936F



42B1A6



3CADD3

Sweetspot

The Sweet Spot groups the original color and five complimentary colors.



DC899C



FFE3E9



C989DC



806F73



000000



808080

Same Dimension

The Same Dimension uses a secret algorithm to generate beautiful new colors.



DC899C



FF8CA7



DC9F89



6E6365



AD0028



2E000B

Inverse Universe

The Inverse Universe completely reimagines the original color for something new.



DC899C



FF8CA7



89C6DC



6E6365



AD0028



2E000B

Previews

White Background



This preview shows how the Hex color DC899C looks on a white background.

Color Contrast Check

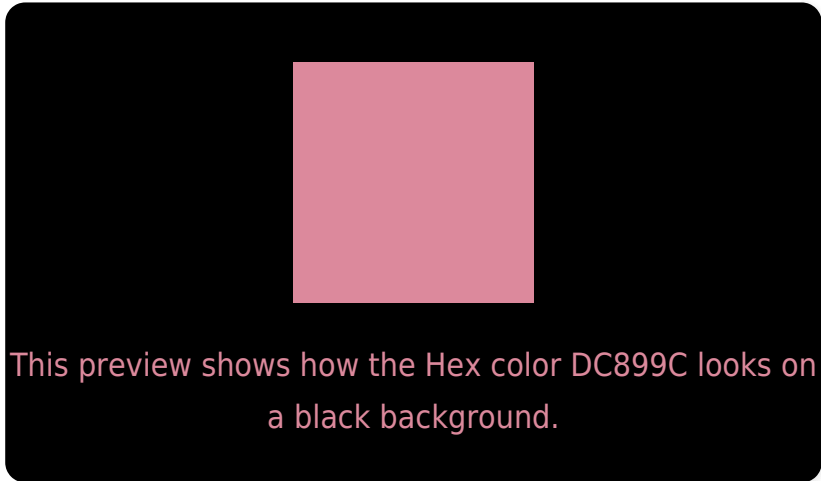
Large Text (above 18pt) WCAG AA × Fail

Any Text WCAG AA × Fail

Large Text (above 18pt) WCAG AAA × Fail

Any Text WCAG AAA × Fail

Black Background



Color Contrast Check

Large Text (above 18pt) WCAG AA ✓ Pass

Any Text WCAG AA ✓ Pass

Large Text (above 18pt) WCAG AAA ✓ Pass

Any Text WCAG AAA ✓ Pass

If you want to check with other color combinations, try the [Color Contrast Checker](#).

Hex DC899C Background



This preview shows how black text looks on a background with the Hex color DC899C.



This preview shows how white text looks on a background with the Hex color DC899C.

Color Blindness Simulation

Color vision deficiency is a very complex topic, and I could not describe the different causes any better than Wikipedia does, so if you want to learn more, you should check out their [article about color blindness](#).

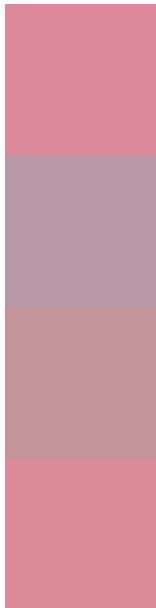
Dichromacy





Tritanopia
DB8A95

Trichromacy



Original Color
DC899C

Protanomaly
B798A4

Deuteranomaly
C3959A

Tritanomaly
DB8A98

Monochromacy



Original Color
DC899C

Achromatopsia
A4A4A4

Achromatomaly
B89AA1

CSS Examples

Text

The CSS property to change the color of the text to Hex DC899C is called "color". The color property can be set on classes, ids or directly on the HTML element.

This example shows how text in the color #DC899C looks like.

```
.text, #text, p{  
    color:#DC899C  
}
```

If you want to add a text shadow in that color use the text-shadow property, you can generate a text shadow directly with our [CSS Text Shadow Generator](#).

Here you see how black text with a 4 pixel #DC899C colored shadow looks like.

```
.shadow{ text-shadow: 4px 4px 2px #DC899C
}
```

Border

The CSS property to change the border of an element to Hex DC899C is called "border". The border property can be set on classes, ids or directly on the HTML element.

This example shows the color as border, it can be applied via the CSS property "border" or "border-color".

```
.border, #border, table{ border:4px solid
#DC899C }
```

If only the border color should be changed use the property `border-color`.

```
.border{ border-color:#DC899C }
```

If you want to add a box shadow in that color use:

Here you see how a box with a 4 pixel #DC899C colored shadow looks like.

```
.boxshadow{ -moz-box-shadow:4px 4px 4px  
4px #DC899C; -webkit-box-shadow:4px 4px  
4px 4px #DC899C; box-shadow:4px 4px 4px  
4px #DC899C }
```

Background

The CSS property to change the background color of an element to Hex DC899C is called "background". The background property can be set on classes, ids or directly on the HTML element.

```
.background, #background, body{  
background:#DC899C }
```

If only the background color should be changed can be used:

```
.background{ background-color:#DC899C }
```

This example shows the color as background, it is applied via the CSS property "background".

To optimize and compress your CSS code, you can use our [online CSS compressor and optimizer](#) based on csstidy. If you want to create a linear or radial gradient as background or border, check our [CSS Gradient Generator](#).

Hey! You found this booklet interesting? Support Converting Colors with the new Membership Option!

The pro membership hides all ads, plus gives you double the colors in the color bucket, and more awesome pro features!

[Learn more, Memberships starting at \\$2.50/m!](#)

**Follow me
on Twitter!**

@ConvertingColor