

Converting Colors

Hex(DC8DC5)

Have a look what the booklet for
Hex(DC8DC5) contains.

Hex(DC8DC5)	3
<i>Conversions</i>	4
<i>Details</i>	6
<i>Harmonies</i>	11
<i>Previews</i>	23
<i>Color Blindness Simulation</i>	26
<i>CSS Examples</i>	29

Color

Hex(DC8DC5)

Conversions

Conversions Part 1

Format	Color
Hex	DC8DC5
RGB	220, 141, 197
RGB Percent	86%, 55%, 77%
CMY	0.1373, 0.4471, 0.2275
CMYK	0.00, 0.36, 0.10, 0.14
HSL	317°, 53%, 71%
HSV	317°, 36%, 86%
XYZ	49.1181, 38.2966, 57.6265
YIQ	171.0050, 29.1080, 34.1640

Conversions

Conversions Part 2

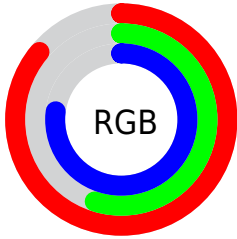
Format	Color
R_{YB}	220, 141, 197
Decimal	14454213
CIE _{Lab}	68.24, 38.14, -16.54
CIE _{LCh}	68, 41.574, 336.559
Yxy	38.2966, 0.3386, 0.2640
Android (android.graphics.Color)	4292644293 (0xFFDC8DC5)
YUV	171.0050, 12.8155, 42.9686
Hunter-Lab	61.8843, 33.3797, -11.8918

Details

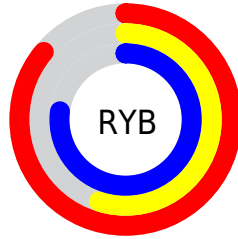
The Hex color **DC8DC5** is a light color, and the websafe version is hex **CC99CC**. A complement of this color would be **8DDCA4**, and the grayscale version is **ABABAB**.

A 20% lighter version of the original color is **FFC4FE**, and **A4598F** is the 20% darker color. If you saturate the color by 10%, you get **DC77BF**, and if you desaturate by 10%, it is **DCA3CB**.

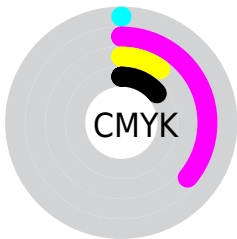
Distribution



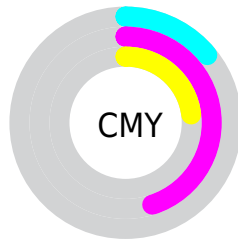
- Red (86%)
- Green (55%)
- Blue (77%)



- Red (86%)
- Yellow (55%)
- Blue (77%)



- Cyan (0%)
- Magenta (36%)
- Yellow (10%)
- Black (14%)



- Cyan (14%)
- Magenta (45%)
- Yellow (23%)

Brightness & Saturation Gradients

These gradients show how the Hex color DC8DC5 changes by changing the brightness by 10 percent. The first figure shows a shift by +10% for each color and the second figure -10%.

Similar to the brightness gradients but the following saturation gradients show a change of the Hex color DC8DC5 by changing the saturation by 10% instead.

 DC8DC5

 DC8DC5

FFFFFF

 BF73AA

 FFC4FE

 A4598F

 FFE0FF

 884075

 FFFDFD

 6E275D

 540B45

 3B002F

 26001A

 000000

 DC8DC5

 DC8DC5

 DC77BF

 DCA3CB

 DC61B8

 DCB9D2

 DC4BB2

 DCCFD8

 DC35AB

 DCE5DF

 DC1FA5

 DCFBE5

 DC099F

 DCFE8

 DC009C

 DCFFF2

 DCFFF8

 DCFFFF

Harmonies

Analogous

The Analogous color harmony consists of three colors that are next to each other on the color wheel.



B599E3



DC8DC5



EE889F

Triad

The Triadic color harmony groups three colors that are evenly spaced from another and form a triangle on the color wheel.



DC8DC5



B6A75A



00B8D2

Complementary

The Complementary color scheme is a pair of colors which are on the opposite of each other on the color wheel.



DC8DC5



8DDCA4

Split Complementary

Split-complementary colors differ from the complementary color scheme. The scheme consists of three colors, the original color and two neighbors of the complement color.



0BBAAE



DC8DC5



8EB168

Square

The Square scheme is like the rectangle color scheme, but the four colors are evenly spaced on the color wheel.



DC8DC5



D79A62



5EB887



25B2EA

Rectangle

The Rectangle color scheme consists of four colors that form a rectangle on the color wheel.



DC8DC5



EE8B87



5EB887



00BAC7

Sweetspot

The Sweet Spot groups the original color and five complimentary colors.



DC8DC5



FFE3F7



A38DDC



806F7B



000000



808080

Same Dimension

The Same Dimension uses a secret algorithm to generate beautiful new colors.



DC8DC5



FF91DF



DC8D9E



6E636A



AD007B



2E0021

Inverse Universe

The Inverse Universe completely reimagines the original color for something new.



DC8DC5



FF91DF



8DDCCB



6E636A



AD007B



2E0021

Previews

White Background



This preview shows how the Hex color DC8DC5 looks on a white background.

Color Contrast Check

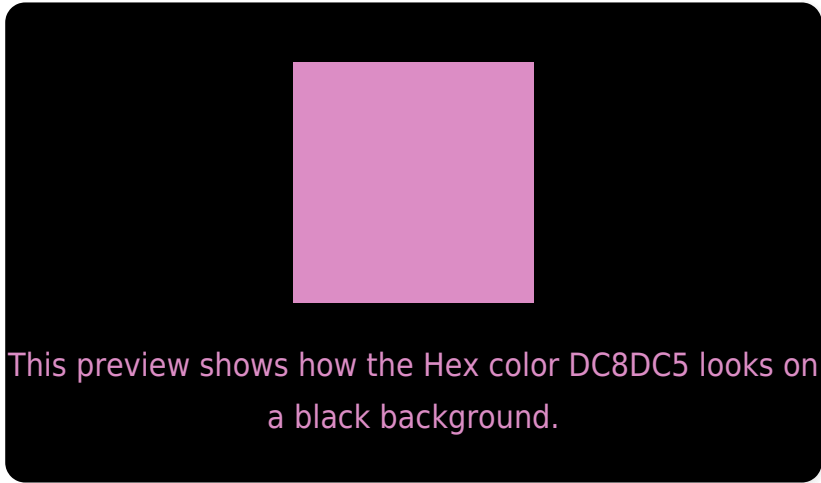
Large Text (above 18pt) WCAG AA × Fail

Any Text WCAG AA × Fail

Large Text (above 18pt) WCAG AAA × Fail

Any Text WCAG AAA × Fail

Black Background



Color Contrast Check

Large Text (above 18pt) WCAG AA ✓ Pass

Any Text WCAG AA ✓ Pass

Large Text (above 18pt) WCAG AAA ✓ Pass

Any Text WCAG AAA ✓ Pass

If you want to check with other color combinations, try the [Color Contrast Checker](#).

Hex DC8DC5 Background



This preview shows how black text looks on a background with the Hex color DC8DC5.

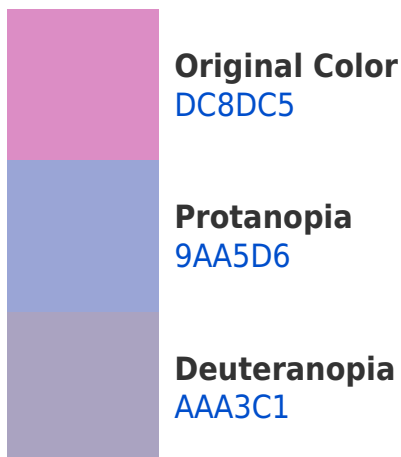



This preview shows how white text looks on a background with the Hex color DC8DC5.

Color Blindness Simulation

Color vision deficiency is a very complex topic, and I could not describe the different causes any better than Wikipedia does, so if you want to learn more, you should check out their [article about color blindness](#).

Dichromacy





Tritanopia
D8949F

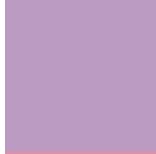
Trichromacy



Original Color
DC8DC5



Protanomaly
B29CD0



Deuteranomaly
BC9BC2

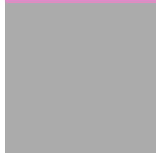


Tritanomaly
D991AD

Monochromacy



Original Color
DC8DC5



Achromatopsia
ABABAB



Achromatomaly
BDA0B4

CSS Examples

Text

The CSS property to change the color of the text to Hex DC8DC5 is called "color". The color property can be set on classes, ids or directly on the HTML element.

This example shows how text in the color #DC8DC5 looks like.

```
.text, #text, p{  
    color:#DC8DC5  
}
```

If you want to add a text shadow in that color use the text-shadow property, you can generate a text shadow directly with our [CSS Text Shadow Generator](#).

Here you see how black text with a 4 pixel #DC8DC5 colored shadow looks like.

```
.shadow{ text-shadow: 4px 4px 2px #DC8DC5
}
```

Border

The CSS property to change the border of an element to Hex DC8DC5 is called "border". The border property can be set on classes, ids or directly on the HTML element.

This example shows the color as border, it can be applied via the CSS property "border" or "border-color".

```
.border, #border, table{ border:4px solid
#DC8DC5 }
```

If only the border color should be changed use the property `border-color`.

```
.border{ border-color:#DC8DC5 }
```

If you want to add a box shadow in that color use:

Here you see how a box with a 4 pixel #DC8DC5 colored shadow looks like.

```
.boxshadow{ -moz-box-shadow:4px 4px 4px  
4px #DC8DC5; -webkit-box-shadow:4px 4px  
4px 4px #DC8DC5; box-shadow:4px 4px 4px  
4px #DC8DC5 }
```

Background

The CSS property to change the background color of an element to Hex DC8DC5 is called "background". The background property can be set on classes, ids or directly on the HTML element.

```
.background, #background, body{  
background:#DC8DC5 }
```

If only the background color should be changed can be used:

```
.background{ background-color:#DC8DC5 }
```

This example shows the color as background, it is applied via the CSS property "background".

To optimize and compress your CSS code, you can use our [online CSS compressor and optimizer](#) based on csstidy. If you want to create a linear or radial gradient as background or border, check our [CSS Gradient Generator](#).

Hey! You found this booklet interesting? Support Converting Colors with the new Membership Option!

The pro membership hides all ads, plus gives you double the colors in the color bucket, and more awesome pro features!

[Learn more, Memberships starting at \\$2.50/m!](#)

**Follow me
on Twitter!**

@ConvertingColor