

# Converting Colors

Hex(DC91A3)

Have a look what the booklet for  
Hex(DC91A3) contains.

|                                                |    |
|------------------------------------------------|----|
| <b>Hex(DC91A3)</b> .....                       | 3  |
| <i><b>Conversions</b></i> .....                | 4  |
| <i><b>Details</b></i> .....                    | 6  |
| <i><b>Harmonies</b></i> .....                  | 11 |
| <i><b>Previews</b></i> .....                   | 23 |
| <i><b>Color Blindness Simulation</b></i> ..... | 26 |
| <i><b>CSS Examples</b></i> .....               | 29 |

# **Color**

**Hex(DC91A3)**

# Conversions

## Conversions Part 1

| Format      | Color                      |
|-------------|----------------------------|
| Hex         | DC91A3                     |
| RGB         | 220, 145, 163              |
| RGB Percent | 86%, 57%, 64%              |
| CMY         | 0.1373, 0.4314, 0.3608     |
| CMYK        | 0.00, 0.34, 0.26, 0.14     |
| HSL         | 346°, 52%, 72%             |
| HSV         | 346°, 34%, 86%             |
| XYZ         | 46.2515, 38.1108, 39.5687  |
| YIQ         | 169.4770, 38.9220, 21.4980 |

# Conversions

## Conversions Part 2

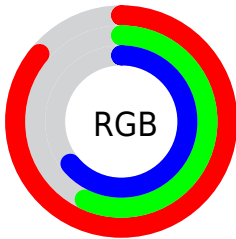
| <b>Format</b>                       | <b>Color</b>                  |
|-------------------------------------|-------------------------------|
| R <sub>Y</sub> B                    | 220, 145, 163                 |
| Decimal                             | 14455203                      |
| CIE Lab                             | 68.10, 30.77, 2.28            |
| CIE LCh                             | 68, 30.852, 4.239             |
| Yxy                                 | 38.1108, 0.3732,<br>0.3075    |
| Android<br>(android.graphics.Color) | 4292645283<br>(0xFFDC91A3)    |
| YUV                                 | 169.4770, -3.1932,<br>44.3087 |
| Hunter-Lab                          | 61.7339, 25.6990,<br>5.2115   |

# Details

The Hex color **DC91A3** is a light color, and the websafe version is hex **CC9999**. A complement of this color would be **91DCCA**, and the grayscale version is **A9A9A9**.

A 20% lighter version of the original color is **FFC8DA**, and **A35D6F** is the 20% darker color. If you saturate the color by 10%, you get **DC7B92**, and if you desaturate by 10%, it is **DCA7B4**.

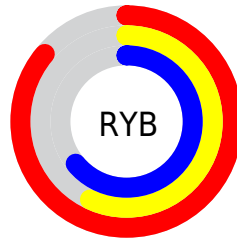
# Distribution



Red (86%)

Green (57%)

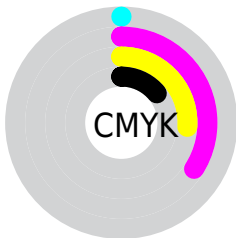
Blue (64%)



Red (86%)

Yellow (57%)

Blue (64%)

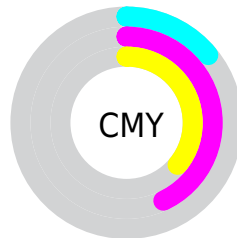


Cyan (0%)

Magenta (34%)

Yellow (26%)

Black (14%)



Cyan (14%)

Magenta (43%)

Yellow (36%)

# Brightness & Saturation Gradients

These gradients show how the Hex color DC91A3 changes by changing the brightness by 10 percent. The first figure shows a shift by +10% for each color and the second figure -10%.

Similar to the brightness gradients but the following saturation gradients show a change of the Hex color DC91A3 by changing the saturation by 10% instead.



 DC91A3

 DC91A3

FFFFFF

 BF7789

 FFC8DA

 A35D6F

 FFE4F6

 884557

 6D2D40

 53152A

 3A0016

 240001

 000000

 DC91A3

 DC91A3

 DC7B92

 DCA7B4

 DC6582

 DCBDC4

 DC4F71

 DCD3D5

 DC3960

 DCE9E6

 DC234F

 DCFFF7

 DC0D3F

 DCFFFF

 DC0035

# Harmonies

## Analogous

The Analogous color harmony consists of three colors that are next to each other on the color wheel.



CD95BF



DC91A3



DC9488

# Triad

The Triadic color harmony groups three colors that are evenly spaced from another and form a triangle on the color wheel.



DC91A3



97AE77



5EAFD7

# Complementary

The Complementary color scheme is a pair of colors which are on the opposite of each other on the color wheel.



DC91A3



91DCCA

# Split Complementary

Split-complementary colors differ from the complementary color scheme. The scheme consists of three colors, the original color and two neighbors of the complement color.



49B4C4



DC91A3



77B38D

# Square

The Square scheme is like the rectangle color scheme, but the four colors are evenly spaced on the color wheel.



DC91A3



B5A66E



58B5A9



87A7DD

# Rectangle

The Rectangle color scheme consists of four colors that form a rectangle on the color wheel.



DC91A3



D3997A



58B5A9



54B1D2



# Sweetspot

The Sweet Spot groups the original color and five complimentary colors.



DC91A3



FFE6EC



C991DC



807074



000000



808080



# Same Dimension

The Same Dimension uses a secret algorithm to generate beautiful new colors.



DC91A3



FF96B0



DCA491



6E6365



AD002A



2E000B



# Inverse Universe

The Inverse Universe completely reimagines the original color for something new.



DC91A3



FF96B0



91C9DC



6E6365



AD002A



2E000B



# Previews

## White Background



This preview shows how the Hex color DC91A3 looks on a white background.

## Color Contrast Check

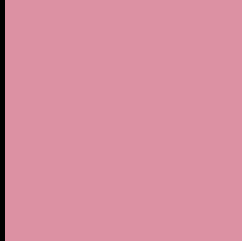
Large Text (above 18pt) WCAG AA × Fail

Any Text WCAG AA × Fail

Large Text (above 18pt) WCAG AAA × Fail

Any Text WCAG AAA × Fail

# Black Background



This preview shows how the Hex color DC91A3 looks on a black background.

## Color Contrast Check

Large Text (above 18pt) WCAG AA ✓ Pass

Any Text WCAG AA ✓ Pass

Large Text (above 18pt) WCAG AAA ✓ Pass

Any Text WCAG AAA ✓ Pass

If you want to check with other color combinations, try the [Color Contrast Checker](#).



## Hex DC91A3 Background



This preview shows how black text looks on a background with the Hex color DC91A3.

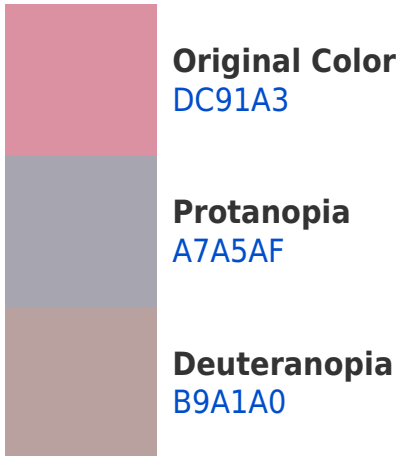


This preview shows how white text looks on a background with the Hex color DC91A3.

# Color Blindness Simulation

Color vision deficiency is a very complex topic, and I could not describe the different causes any better than Wikipedia does, so if you want to learn more, you should check out their [article about color blindness](#).

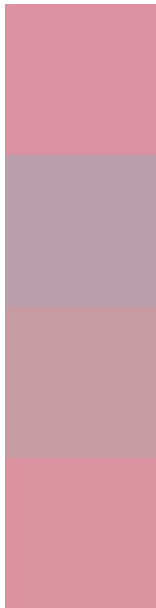
## Dichromacy





**Tritanopia**  
DB929D

# Trichromacy



**Original Color**  
DC91A3

**Protanomaly**  
BA9EAB

**Deuteranomaly**  
C69BA1

**Tritanomaly**  
DB929F

# Monochromacy



**Original Color**  
DC91A3

**Achromatopsia**  
A9A9A9

**Achromatomaly**  
BCA0A7

# CSS Examples

## Text

The CSS property to change the color of the text to Hex DC91A3 is called "color". The color property can be set on classes, ids or directly on the HTML element.

This example shows how text in the color #DC91A3 looks like.

```
.text, #text, p{  
    color:#DC91A3  
}
```

If you want to add a text shadow in that color use the text-shadow property, you can generate a text shadow directly with our [CSS Text Shadow Generator](#).

Here you see how black text with a 4 pixel #DC91A3 colored shadow looks like.

```
.shadow{ text-shadow: 4px 4px 2px #DC91A3
}
```

## Border

The CSS property to change the border of an element to Hex DC91A3 is called "border". The border property can be set on classes, ids or directly on the HTML element.

This example shows the color as border, it can be applied via the CSS property "border" or "border-color".

```
.border, #border, table{ border:4px solid
#DC91A3 }
```

If only the border color should be changed use the property `border-color`.

```
.border{ border-color:#DC91A3 }
```

If you want to add a box shadow in that color use:

Here you see how a box with a 4 pixel #DC91A3 colored shadow looks like.

```
.boxshadow{ -moz-box-shadow:4px 4px 4px  
4px #DC91A3; -webkit-box-shadow:4px 4px  
4px 4px #DC91A3; box-shadow:4px 4px 4px  
4px #DC91A3 }
```

# Background

The CSS property to change the background color of an element to Hex DC91A3 is called "background". The background property can be set on classes, ids or directly on the HTML element.

```
.background, #background, body{  
background:#DC91A3 }
```

If only the background color should be changed can be used:

```
.background{ background-color:#DC91A3 }
```

This example shows the color as background, it is applied via the CSS property "background".

To optimize and compress your CSS code, you can use our [online CSS compressor and optimizer](#) based on csstidy. If you want to create a linear or radial gradient as background or border, check our [CSS Gradient Generator](#).



Hey! You found this booklet interesting? Support Converting Colors with the new Membership Option!

The pro membership hides all ads, plus gives you double the colors in the color bucket, and more awesome pro features!

**[Learn more, Memberships starting at \\$2.50/m!](#)**

**Follow me  
on Twitter!**

@ConvertingColor