

# Converting Colors

Hex(DC96A7)

Have a look what the booklet for  
Hex(DC96A7) contains.

<b>Hex(DC96A7)</b> .....	3
<i><b>Conversions</b></i> .....	4
<i><b>Details</b></i> .....	6
<i><b>Harmonies</b></i> .....	11
<i><b>Previews</b></i> .....	23
<i><b>Color Blindness Simulation</b></i> .....	26
<i><b>CSS Examples</b></i> .....	29

# **Color**

**Hex(DC96A7)**

# Conversions

## Conversions Part 1

<b>Format</b>	<b>Color</b>
Hex	DC96A7
RGB	220, 150, 167
RGB Percent	86%, 59%, 65%
CMY	0.1373, 0.4118, 0.3451
CMYK	0.00, 0.32, 0.24, 0.14
HSL	345°, 50%, 73%
HSV	345°, 32%, 86%
XYZ	47.3966, 39.8184, 41.7469
YIQ	172.8680, 36.2630, 20.1270

# Conversions

## Conversions Part 2

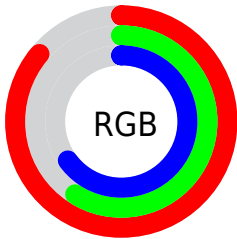
Format	Color
R <sub>Y</sub> B	220, 150, 167
Decimal	14456487
CIE Lab	69.34, 28.65, 1.84
CIE LCh	69, 28.711, 3.680
Yxy	39.8184, 0.3675, 0.3088
Android (android.graphics.Color)	4292646567 (0xFFDC96A7)
YUV	172.8680, -2.8929, 41.3348
Hunter-Lab	63.1018, 23.6456, 4.9462

# Details

The Hex color **DC96A7** is a light color, and the websafe version is hex **CC9999**. A complement of this color would be **96DCCB**, and the grayscale version is **ADADAD**.

A 20% lighter version of the original color is **FFCDDE**, and **A46273** is the 20% darker color. If you saturate the color by 10%, you get **DC8096**, and if you desaturate by 10%, it is **DCACB8**.

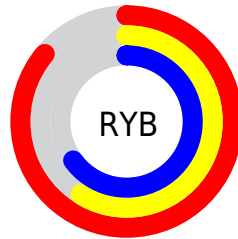
# Distribution



Red (86%)

Green (59%)

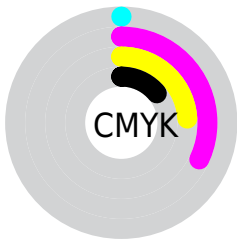
Blue (65%)



Red (86%)

Yellow (59%)

Blue (65%)

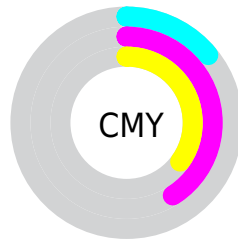


Cyan (0%)

Magenta (32%)

Yellow (24%)

Black (14%)



Cyan (14%)

Magenta (41%)

Yellow (35%)

# Brightness & Saturation Gradients

These gradients show how the Hex color DC96A7 changes by changing the brightness by 10 percent. The first figure shows a shift by +10% for each color and the second figure -10%.

Similar to the brightness gradients but the following saturation gradients show a change of the Hex color DC96A7 by changing the saturation by 10% instead.



 DC96A7

 DC96A7

FFFFFF

 BF7C8D

 FFCDDDE

 A46273

 FFE9FB

 884A5B

 6E3243

 541A2D

 3B0219

 270001

 000000

 DC96A7

 DC96A7

 DC8096

 DCACB8

 DC6A86

 DCC2C8

 DC5475

 DCD8D9

 DC3E64

 DCEEEA

 DC2854

 DCFFFA

 DC1243

 DCFFFF

 DC0035

# Harmonies

## Analogous

The Analogous color harmony consists of three colors that are next to each other on the color wheel.



CD99C1



DC96A7



DC998E

# Triad

The Triadic color harmony groups three colors that are evenly spaced from another and form a triangle on the color wheel.



DC96A7



9DB07D



69B2D7

# Complementary

The Complementary color scheme is a pair of colors which are on the opposite of each other on the color wheel.



DC96A7



96DCCB

# Split Complementary

Split-complementary colors differ from the complementary color scheme. The scheme consists of three colors, the original color and two neighbors of the complement color.



57B7C5



DC96A7



7EB691

# Square

The Square scheme is like the rectangle color scheme, but the four colors are evenly spaced on the color wheel.



DC96A7



B9A975



63B8AC



8CABDD

# Rectangle

The Rectangle color scheme consists of four colors that form a rectangle on the color wheel.



DC96A7



D59D80



63B8AC



60B4D2



# Sweetspot

The Sweet Spot groups the original color and five complimentary colors.



DC96A7



FFE6EC



CB96DC



807074



000000



808080



# Same Dimension

The Same Dimension uses a secret algorithm to generate beautiful new colors.



DC96A7



FF9EB6



DCA896



6E6365



AD002A



2E000B



# Inverse Universe

The Inverse Universe completely reimagines the original color for something new.



DC96A7



FF9EB6



96CBDC



6E6365



AD002A



2E000B



# Previews

## White Background



This preview shows how the Hex color DC96A7 looks on a white background.

## Color Contrast Check

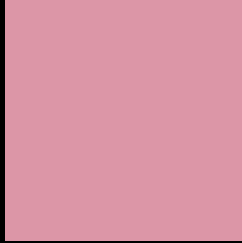
Large Text (above 18pt) WCAG AA × Fail

Any Text WCAG AA × Fail

Large Text (above 18pt) WCAG AAA × Fail

Any Text WCAG AAA × Fail

# Black Background



This preview shows how the Hex color DC96A7 looks on a black background.

## Color Contrast Check

Large Text (above 18pt) WCAG AA ✓ Pass

Any Text WCAG AA ✓ Pass

Large Text (above 18pt) WCAG AAA ✓ Pass

Any Text WCAG AAA ✓ Pass

If you want to check with other color combinations, try the [Color Contrast Checker](#).



## Hex DC96A7 Background



This preview shows how black text looks on a background with the Hex color DC96A7.

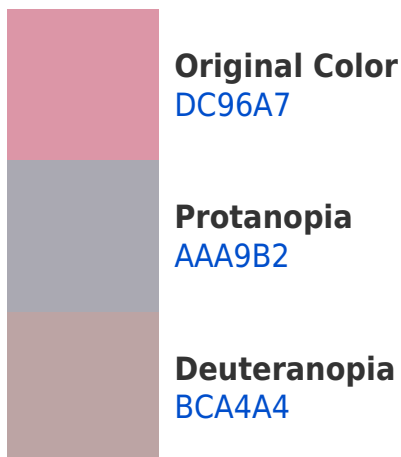


This preview shows how white text looks on a background with the Hex color DC96A7.

# Color Blindness Simulation

Color vision deficiency is a very complex topic, and I could not describe the different causes any better than Wikipedia does, so if you want to learn more, you should check out their [article about color blindness](#).

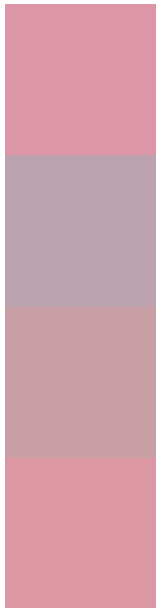
## Dichromacy





**Tritanopia**  
DB97A2

# Trichromacy



**Original Color**  
DC96A7

**Protanomaly**  
BCA2AE

**Deuteranomaly**  
C89FA5

**Tritanomaly**  
DB97A4

# Monochromacy



**Original Color**  
DC96A7

**Achromatopsia**  
ADADAD

**Achromatomaly**  
BEA5AB

# CSS Examples

## Text

The CSS property to change the color of the text to Hex DC96A7 is called "color". The color property can be set on classes, ids or directly on the HTML element.

This example shows how text in the color #DC96A7 looks like.

```
.text, #text, p{  
    color:#DC96A7  
}
```

If you want to add a text shadow in that color use the text-shadow property, you can generate a text shadow directly with our [CSS Text Shadow Generator](#).

Here you see how black text with a 4 pixel #DC96A7 colored shadow looks like.

```
.shadow{ text-shadow: 4px 4px 2px #DC96A7
}
```

## Border

The CSS property to change the border of an element to Hex DC96A7 is called "border". The border property can be set on classes, ids or directly on the HTML element.

This example shows the color as border, it can be applied via the CSS property "border" or "border-color".

```
.border, #border, table{ border:4px solid
#DC96A7 }
```

If only the border color should be changed use the property `border-color`.

```
.border{ border-color:#DC96A7 }
```

If you want to add a box shadow in that color use:

Here you see how a box with a 4 pixel #DC96A7 colored shadow looks like.

```
.boxshadow{ -moz-box-shadow:4px 4px 4px  
4px #DC96A7; -webkit-box-shadow:4px 4px  
4px 4px #DC96A7; box-shadow:4px 4px 4px  
4px #DC96A7 }
```

# Background

The CSS property to change the background color of an element to Hex DC96A7 is called "background". The background property can be set on classes, ids or directly on the HTML element.

```
.background, #background, body{  
background:#DC96A7 }
```

If only the background color should be changed can be used:

```
.background{ background-color:#DC96A7 }
```

This example shows the color as background, it is applied via the CSS property "background".

To optimize and compress your CSS code, you can use our [online CSS compressor and optimizer](#) based on csstidy. If you want to create a linear or radial gradient as background or border, check our [CSS Gradient Generator](#).



Hey! You found this booklet interesting? Support Converting Colors with the new Membership Option!

The pro membership hides all ads, plus gives you double the colors in the color bucket, and more awesome pro features!

**[Learn more, Memberships starting at \\$2.50/m!](#)**

**Follow me  
on Twitter!**

@ConvertingColor