

# Converting Colors

Hex(DCA8B3)

Have a look what the booklet for  
Hex(DCA8B3) contains.

<b>Hex(DCA8B3)</b> .....	3
<b><i>Conversions</i></b> .....	4
<b><i>Details</i></b> .....	6
<b><i>Harmonies</i></b> .....	11
<b><i>Previews</i></b> .....	23
<b><i>Color Blindness Simulation</i></b> .....	26
<b><i>CSS Examples</i></b> .....	29

# **Color**

**Hex(DCA8B3)**

# Conversions

## Conversions Part 1

Format	Color
Hex	DCA8B3
RGB	220, 168, 179
RGB Percent	86%, 66%, 70%
CMY	0.1373, 0.3412, 0.2980
CMYK	0.00, 0.24, 0.19, 0.14
HSL	347°, 43%, 76%
HSV	347°, 24%, 86%
XYZ	51.6545, 46.4756, 48.8960
YIQ	184.8020, 27.4610, 14.4450

# Conversions

## Conversions Part 2

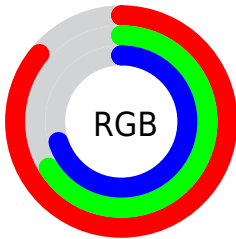
Format	Color
R <sub>Y</sub> B	220, 168, 179
Decimal	14461107
CIE Lab	73.85, 20.73, 1.76
CIE LCh	74, 20.808, 4.860
Yxy	46.4756, 0.3513, 0.3161
Android (android.graphics.Color)	4292651187 (0xFFDCA8B3)
YUV	184.8020, -2.8604, 30.8686
Hunter-Lab	68.1730, 15.9463, 5.1963

# Details

The Hex color **DCA8B3** is a light color, and the websafe version is hex **CC9999**. A complement of this color would be **A8DCD1**, and the grayscale version is **B9B9B9**.

A 20% lighter version of the original color is **FFDFEB**, and **A4747E** is the 20% darker color. If you saturate the color by 10%, you get **DC92A2**, and if you desaturate by 10%, it is **DCBEC4**.

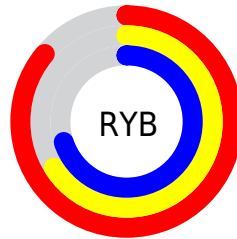
# Distribution



Red (86%)

Green (66%)

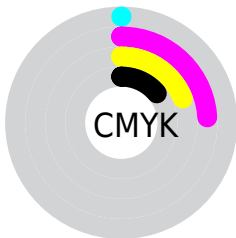
Blue (70%)



Red (86%)

Yellow (66%)

Blue (70%)

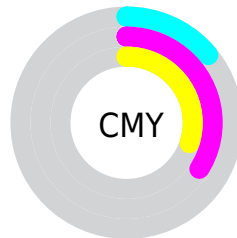


Cyan (0%)

Magenta (24%)

Yellow (19%)

Black (14%)



Cyan (14%)

Magenta (34%)

Yellow (30%)

# Brightness & Saturation Gradients

These gradients show how the Hex color DCA8B3 changes by changing the brightness by 10 percent. The first figure shows a shift by +10% for each color and the second figure -10%.

Similar to the brightness gradients but the following saturation gradients show a change of the Hex color DCA8B3 by changing the saturation by 10% instead.



 DCA8B3

 DCA8B3

FFFFFF

 C08D98

 FFDFEB

 A4747E

 FFFCFF

 895B65

 6F434E

 562C37

 3E1622

 28000B

 000000

 DCA8B3

 DCA8B3

 DC92A2

 DCBEC4

 DC7C90

 DCD4D6

 DC667F

 DCEAE7

 DC506E

 DCFFF8

 DC3A5C

 DCFFFF

 DC244B

 DC0E3A

 DC002F

# Harmonies

## Analogous

The Analogous color harmony consists of three colors that are next to each other on the color wheel.



D1AAC6



DCA8B3



DCAAA1

# Triad

The Triadic color harmony groups three colors that are evenly spaced from another and form a triangle on the color wheel.



DCA8B3



ACBB96



8DBCD7

# Complementary

The Complementary color scheme is a pair of colors which are on the opposite of each other on the color wheel.



DCA8B3



A8DCD1

# Split Complementary

Split-complementary colors differ from the complementary color scheme. The scheme consists of three colors, the original color and two neighbors of the complement color.



81C0CB



DCA8B3



96BFA5

# Square

The Square scheme is like the rectangle color scheme, but the four colors are evenly spaced on the color wheel.



DCA8B3



C1B590



86C1B8



A4B6DB

# Rectangle

The Rectangle color scheme consists of four colors that form a rectangle on the color wheel.



DCA8B3



D7AD97



86C1B8



87BDD4



# Sweetspot

The Sweet Spot groups the original color and five complimentary colors.



DCA8B3



FFEDF1



D1A8DC



807577



000000



808080



# Same Dimension

The Same Dimension uses a secret algorithm to generate beautiful new colors.



DCA8B3



FFB8C7



DCB7A8



6E6365



AD0025



2E000A



# Inverse Universe

The Inverse Universe completely reimagines the original color for something new.



DCA8B3



FFB8C7



A8CDDC



6E6365



AD0025

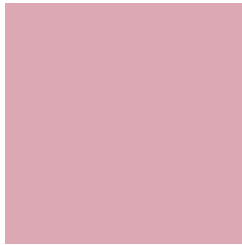


2E000A



# Previews

## White Background



This preview shows how the Hex color DCA8B3 looks on a white background.

## Color Contrast Check

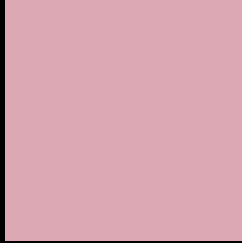
Large Text (above 18pt) WCAG AA × Fail

Any Text WCAG AA × Fail

Large Text (above 18pt) WCAG AAA × Fail

Any Text WCAG AAA × Fail

# Black Background



This preview shows how the Hex color DCA8B3 looks on a black background.

## Color Contrast Check

Large Text (above 18pt) WCAG AA ✓ Pass

Any Text WCAG AA ✓ Pass

Large Text (above 18pt) WCAG AAA ✓ Pass

Any Text WCAG AAA ✓ Pass

If you want to check with other color combinations, try the [Color Contrast Checker](#).



## Hex DCA8B3 Background



This preview shows how black text looks on a background with the Hex color DCA8B3.



This preview shows how white text looks on a background with the Hex color DCA8B3.

# Color Blindness Simulation

Color vision deficiency is a very complex topic, and I could not describe the different causes any better than Wikipedia does, so if you want to learn more, you should check out their [article about color blindness](#).

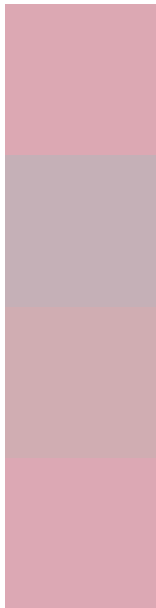
## Dichromacy





**Tritanopia**  
DCA8B5

# Trichromacy



**Original Color**  
DCA8B3

**Protanomaly**  
C5B0B7

**Deuteranomaly**  
D0ADB2

**Tritanomaly**  
DCA8B4

# Monochromacy



**Original Color**  
DCA8B3

**Achromatopsia**  
B9B9B9

**Achromatomaly**  
C6B3B7

# CSS Examples

## Text

The CSS property to change the color of the text to Hex DCA8B3 is called "color". The color property can be set on classes, ids or directly on the HTML element.

This example shows how text in the color #DCA8B3 looks like.

```
.text, #text, p{  
    color:#DCA8B3  
}
```

If you want to add a text shadow in that color use the text-shadow property, you can generate a text shadow directly with our [CSS Text Shadow Generator](#).

Here you see how black text with a 4 pixel #DCA8B3 colored shadow looks like.

```
.shadow{ text-shadow: 4px 4px 2px #DCA8B3  
}
```

## Border

The CSS property to change the border of an element to Hex DCA8B3 is called "border". The border property can be set on classes, ids or directly on the HTML element.

This example shows the color as border, it can be applied via the CSS property "border" or "border-color".

```
.border, #border, table{ border:4px solid  
#DCA8B3 }
```

If only the border color should be changed use the property `border-color`.

```
.border{ border-color:#DCA8B3 }
```

If you want to add a box shadow in that color use:

Here you see how a box with a 4 pixel #DCA8B3 colored shadow looks like.

```
.boxshadow{ -moz-box-shadow:4px 4px 4px  
4px #DCA8B3; -webkit-box-shadow:4px 4px  
4px 4px #DCA8B3; box-shadow:4px 4px 4px  
4px #DCA8B3 }
```

# Background

The CSS property to change the background color of an element to Hex DCA8B3 is called "background". The background property can be set on classes, ids or directly on the HTML element.

```
.background, #background, body{  
background:#DCA8B3 }
```

If only the background color should be changed can be used:

```
.background{ background-color:#DCA8B3 }
```

This example shows the color as background, it is applied via the CSS property "background".

To optimize and compress your CSS code, you can use our [online CSS compressor and optimizer](#) based on csstidy. If you want to create a linear or radial gradient as background or border, check our [CSS Gradient Generator](#).



Hey! You found this booklet interesting? Support Converting Colors with the new Membership Option!

The pro membership hides all ads, plus gives you double the colors in the color bucket, and more awesome pro features!

**[Learn more, Memberships starting at \\$2.50/m!](#)**

**Follow me  
on Twitter!**

@ConvertingColor