

Converting Colors

Hex(DCACB3)

Have a look what the booklet for
Hex(DCACB3) contains.

| | |
|--|----|
| Hex(DCACB3) | 3 |
| <i>Conversions</i> | 4 |
| <i>Details</i> | 6 |
| <i>Harmonies</i> | 11 |
| <i>Previews</i> | 23 |
| <i>Color Blindness Simulation</i> | 26 |
| <i>CSS Examples</i> | 29 |

Color

Hex(DCACB3)

Conversions

Conversions Part 1

| Format | Color |
|-------------|----------------------------|
| Hex | DCACB3 |
| RGB | 220, 172, 179 |
| RGB Percent | 86%, 67%, 70% |
| CMY | 0.1373, 0.3255, 0.2980 |
| CMYK | 0.00, 0.22, 0.19, 0.14 |
| HSL | 351°, 41%, 77% |
| HSV | 351°, 22%, 86% |
| XYZ | 52.4044, 47.9754, 49.1460 |
| YIQ | 187.1500, 26.3610, 12.3530 |

Conversions

Conversions Part 2

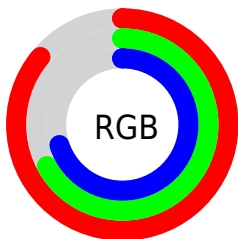
| Format | Color |
|-------------------------------------|-------------------------------|
| R _Y B | 220, 172, 179 |
| Decimal | 14462131 |
| CIE Lab | 74.81, 18.58, 3.15 |
| CIE LCh | 75, 18.842, 9.628 |
| Yxy | 47.9754, 0.3505, 0.3209 |
| Android (android.graphics.Color) | 4292652211 (0xFFDCACB3) |
| YUV | 187.1500, -4.0180, 28.8094 |
| Hunter-Lab | 69.2643, 13.8383, 6.4162 |

Details

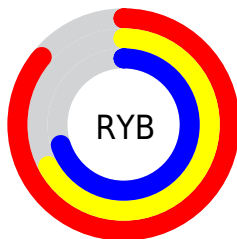
The Hex color **DCACB3** is a light color, and the websafe version is hex **CC9999**. A complement of this color would be **ACDCD5**, and the grayscale version is **BBBBBB**.

A 20% lighter version of the original color is **FFE4EB**, and **A4777E** is the 20% darker color. If you saturate the color by 10%, you get **DC96A0**, and if you desaturate by 10%, it is **DCC2C6**.

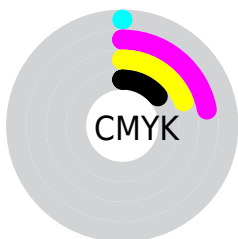
Distribution



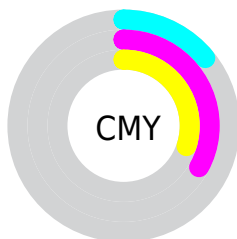
- Red (86%)
- Green (67%)
- Blue (70%)



- Red (86%)
- Yellow (67%)
- Blue (70%)



- Cyan (0%)
- Magenta (22%)
- Yellow (19%)
- Black (14%)



- Cyan (14%)
- Magenta (33%)
- Yellow (30%)

Brightness & Saturation Gradients

These gradients show how the Hex color DCACB3 changes by changing the brightness by 10 percent. The first figure shows a shift by +10% for each color and the second figure -10%.

Similar to the brightness gradients but the following saturation gradients show a change of the Hex color DCACB3 by changing the saturation by 10% instead.

 DCACB3

 DCACB3

FFFFFF

 C09198

 FFE4EB

 A4777E

 895F65

 6F474D

 563037

 3E1A21

 28030B

 000000

 DCACB3

 DCACB3

 DC96A0

 DCC2C6

 DC808D

 DCD8D9

 DC6A7B

 DCEEEB

 DC5468

 DCFFFE

 DC3E55

 DCFFFF

 DC2842

 DC122F

 DC0020

Harmonies

Analogous

The Analogous color harmony consists of three colors that are next to each other on the color wheel.



D3ADC5



DCACB3



DBAEA3

Triad

The Triadic color harmony groups three colors that are evenly spaced from another and form a triangle on the color wheel.



DCACB3



ACBE9D



97BDD8

Complementary

The Complementary color scheme is a pair of colors which are on the opposite of each other on the color wheel.



DCACB3



ACDCD5

Split Complementary

Split-complementary colors differ from the complementary color scheme. The scheme consists of three colors, the original color and two neighbors of the complement color.



8BC1CE



DCACB3



99C1AB

Square

The Square scheme is like the rectangle color scheme, but the four colors are evenly spaced on the color wheel.



DCACB3



C0B996



8CC2BD



ACB8DA

Rectangle

The Rectangle color scheme consists of four colors that form a rectangle on the color wheel.



DCACB3



D5B19B



8CC2BD



91BFD5

Sweetspot

The Sweet Spot groups the original color and five complimentary colors.



DCACB3



FFEDF0



D5ACDC



807577



000000



808080

Same Dimension

The Same Dimension uses a secret algorithm to generate beautiful new colors.



DCACB3



FFBDC6



DCBDAC



6E6364



AD0019



2E0007

Inverse Universe

The Inverse Universe completely reimagines the original color for something new.



DCACB3



FFBDC6



ACCBDC



6E6364



AD0019



2E0007

Previews

White Background



This preview shows how the Hex color DCACB3 looks on a white background.

Color Contrast Check

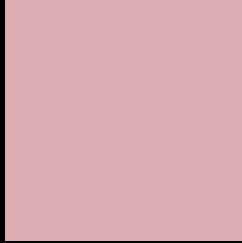
Large Text (above 18pt) WCAG AA × Fail

Any Text WCAG AA × Fail

Large Text (above 18pt) WCAG AAA × Fail

Any Text WCAG AAA × Fail

Black Background



This preview shows how the Hex color DCACB3 looks on a black background.

Color Contrast Check

Large Text (above 18pt) WCAG AA ✓ Pass

Any Text WCAG AA ✓ Pass

Large Text (above 18pt) WCAG AAA ✓ Pass

Any Text WCAG AAA ✓ Pass

If you want to check with other color combinations, try the [Color Contrast Checker](#).

Hex DCACB3 Background



This preview shows how black text looks on a background with the Hex color DCACB3.

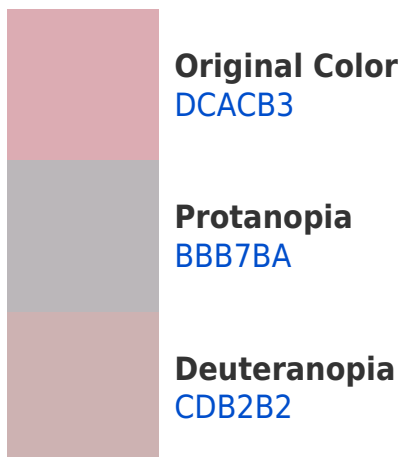


This preview shows how white text looks on a background with the Hex color DCACB3.

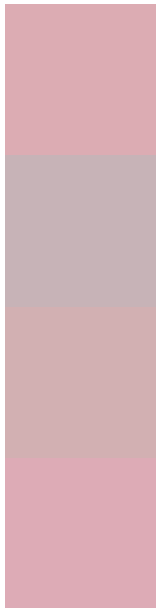
Color Blindness Simulation

Color vision deficiency is a very complex topic, and I could not describe the different causes any better than Wikipedia does, so if you want to learn more, you should check out their [article about color blindness](#).

Dichromacy



Trichromacy



Original Color
DCACB3

Protanomaly
C7B3B7

Deuteranomaly
D2B0B2

Tritanomaly
DDABB6

Monochromacy



Original Color
DCACB3

Achromatopsia
BBBBBB

Achromatomaly
C7B6B8

CSS Examples

Text

The CSS property to change the color of the text to Hex DCACB3 is called "color". The color property can be set on classes, ids or directly on the HTML element.

This example shows how text in the color #DCACB3 looks like.

```
.text, #text, p{  
    color:#DCACB3  
}
```

If you want to add a text shadow in that color use the text-shadow property, you can generate a text shadow directly with our [CSS Text Shadow Generator](#).

Here you see how black text with a 4 pixel #DCACB3 colored shadow looks like.

```
.shadow{ text-shadow: 4px 4px 2px #DCACB3  
}
```

Border

The CSS property to change the border of an element to Hex DCACB3 is called "border". The border property can be set on classes, ids or directly on the HTML element.

This example shows the color as border, it can be applied via the CSS property "border" or "border-color".

```
.border, #border, table{ border:4px solid  
#DCACB3 }
```

If only the border color should be changed use the property `border-color`.

```
.border{ border-color:#DCACB3 }
```

If you want to add a box shadow in that color use:

Here you see how a box with a 4 pixel #DCACB3 colored shadow looks like.

```
.boxshadow{ -moz-box-shadow:4px 4px 4px  
4px #DCACB3; -webkit-box-shadow:4px 4px  
4px 4px #DCACB3; box-shadow:4px 4px 4px  
4px #DCACB3 }
```

Background

The CSS property to change the background color of an element to Hex DCACB3 is called "background". The background property can be set on classes, ids or directly on the HTML element.

```
.background, #background, body{  
background:#DCACB3 }
```

If only the background color should be changed can be used:

```
.background{ background-color:#DCACB3 }
```

This example shows the color as background, it is applied via the CSS property "background".

To optimize and compress your CSS code, you can use our [online CSS compressor and optimizer](#) based on csstidy. If you want to create a linear or radial gradient as background or border, check our [CSS Gradient Generator](#).

Hey! You found this booklet interesting? Support Converting Colors with the new Membership Option!

The pro membership hides all ads, plus gives you double the colors in the color bucket, and more awesome pro features!

[Learn more, Memberships starting at \\$2.50/m!](#)

**Follow me
on Twitter!**

@ConvertingColor