

Converting Colors

Hex(DCACBA)

Have a look what the booklet for
Hex(DCACBA) contains.

Hex(DCACBA)	3
<i>Conversions</i>	4
<i>Details</i>	6
<i>Harmonies</i>	11
<i>Previews</i>	23
<i>Color Blindness Simulation</i>	26
<i>CSS Examples</i>	29

Color

Hex(DCACBA)

Conversions

Conversions Part 1

Format	Color
Hex	DCACBA
RGB	220, 172, 186
RGB Percent	86%, 67%, 73%
CMY	0.1373, 0.3255, 0.2706
CMYK	0.00, 0.22, 0.15, 0.14
HSL	342°, 41%, 77%
HSV	342°, 22%, 86%
XYZ	53.1307, 48.2659, 52.9703
YIQ	187.9480, 24.1140, 14.5300

Conversions

Conversions Part 2

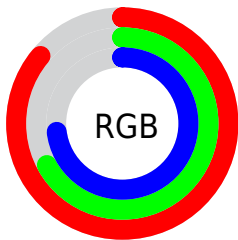
Format	Color
R _Y B	220, 172, 186
Decimal	14462138
CIE Lab	74.99, 19.67, -0.41
CIE LCh	75, 19.678, 358.795
Yxy	48.2659, 0.3442, 0.3127
Android (android.graphics.Color)	4292652218 (0xFFDCACBA)
YUV	187.9480, -0.9604, 28.1096
Hunter-Lab	69.4736, 14.9308, 3.4258

Details

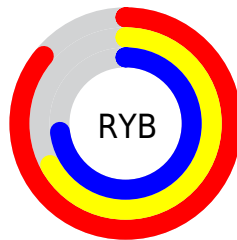
The Hex color **DCACBA** is a light color, and the websafe version is hex **CC9999**. A complement of this color would be **ACDCCE**, and the grayscale version is **BCBCBC**.

A 20% lighter version of the original color is **FFE4F2**, and **A47785** is the 20% darker color. If you saturate the color by 10%, you get **DC96AA**, and if you desaturate by 10%, it is **DCC2CA**.

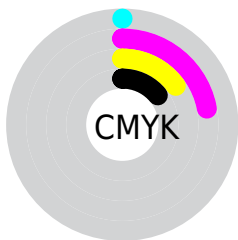
Distribution



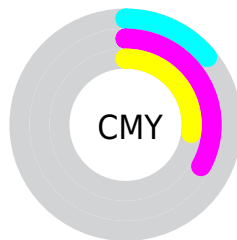
- Red (86%)
- Green (67%)
- Blue (73%)



- Red (86%)
- Yellow (67%)
- Blue (73%)



- Cyan (0%)
- Magenta (22%)
- Yellow (15%)
- Black (14%)



- Cyan (14%)
- Magenta (33%)
- Yellow (27%)

Brightness & Saturation Gradients

These gradients show how the Hex color DCACBA changes by changing the brightness by 10 percent. The first figure shows a shift by +10% for each color and the second figure -10%.

Similar to the brightness gradients but the following saturation gradients show a change of the Hex color DCACBA by changing the saturation by 10% instead.

 DCACBA

FFFFFF

 FFE4F2

 DCACBA

 C0919F

 A47785

 8A5E6C

 704654

 57303C

 3E1A27

 280312

 000000

 DCACBA

 DCACBA

 DC96AA

 DCC2CA

 DC809B

 DCD8D9

 DC6A8B

 DCEEE9

 DC547C

 DCFFF8

 DC3E6C

 DCFFFF

 DC285D

 DC124D

 DC0040

Harmonies

Analogous

The Analogous color harmony consists of three colors that are next to each other on the color wheel.



D0AFCC



DCACBA



DEADA8

Triad

The Triadic color harmony groups three colors that are evenly spaced from another and form a triangle on the color wheel.



DCACBA



B4BD99



8FC0D7

Complementary

The Complementary color scheme is a pair of colors which are on the opposite of each other on the color wheel.



DCACBA



ACDCCE

Split Complementary

Split-complementary colors differ from the complementary color scheme. The scheme consists of three colors, the original color and two neighbors of the complement color.



88C3C9



DCACBA



9FC1A5

Square

The Square scheme is like the rectangle color scheme, but the four colors are evenly spaced on the color wheel.



DCACBA



C7B795



8EC3B7



A3BADC

Rectangle

The Rectangle color scheme consists of four colors that form a rectangle on the color wheel.



DCACBA



DAB09E



8EC3B7



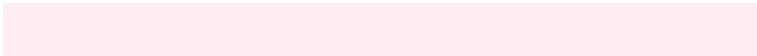
8BC1D3

Sweetspot

The Sweet Spot groups the original color and five complimentary colors.



DCACBA



FFEDF2



CEACDC



807578



000000



808080

Same Dimension

The Same Dimension uses a secret algorithm to generate beautiful new colors.



DCACBA



FFBDD0



DCB6AC



6E6366



AD0033



2E000D

Inverse Universe

The Inverse Universe completely reimagines the original color for something new.



DCACBA



FFBDD0



ACD2DC



6E6366



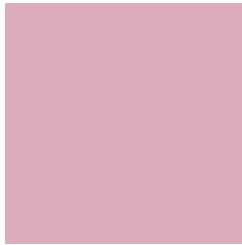
AD0033



2E000D

Previews

White Background



This preview shows how the Hex color DCACBA looks on a white background.

Color Contrast Check

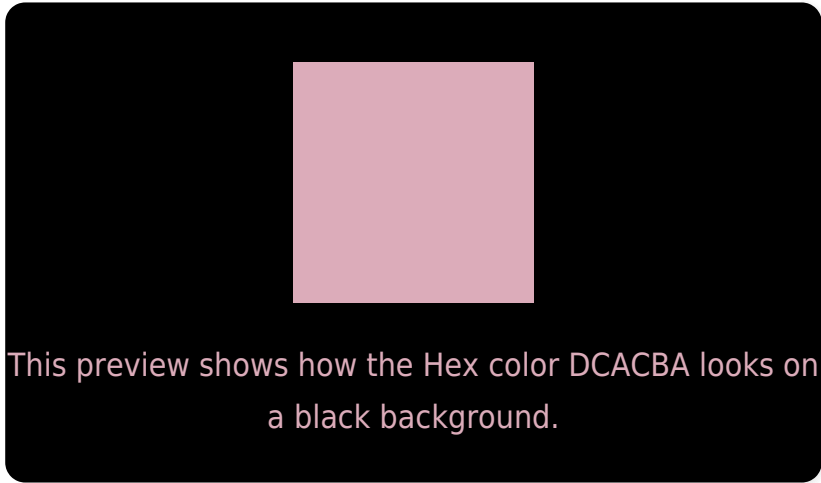
Large Text (above 18pt) WCAG AA × Fail

Any Text WCAG AA × Fail

Large Text (above 18pt) WCAG AAA × Fail

Any Text WCAG AAA × Fail

Black Background



Color Contrast Check

Large Text (above 18pt) WCAG AA ✓ Pass

Any Text WCAG AA ✓ Pass

Large Text (above 18pt) WCAG AAA ✓ Pass

Any Text WCAG AAA ✓ Pass

If you want to check with other color combinations, try the [Color Contrast Checker](#).

Hex DCACBA Background



This preview shows how black text looks on a background with the Hex color DCACBA.



This preview shows how white text looks on a background with the Hex color DCACBA.

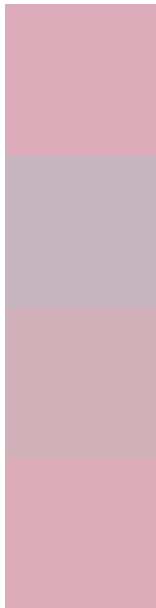
Color Blindness Simulation

Color vision deficiency is a very complex topic, and I could not describe the different causes any better than Wikipedia does, so if you want to learn more, you should check out their [article about color blindness](#).

Dichromacy



Trichromacy



Original Color
DCACBA

Protanomaly
C6B4BE

Deuteranomaly
D1B0B9

Tritanomaly
DCACB9

Monochromacy



Original Color
DCACBA

Achromatopsia
BCBCBC

Achromatomaly
C8B6BB

CSS Examples

Text

The CSS property to change the color of the text to Hex DCACBA is called "color". The color property can be set on classes, ids or directly on the HTML element.

This example shows how text in the color #DCACBA looks like.

```
.text, #text, p{  
    color:#DCACBA  
}
```

If you want to add a text shadow in that color use the text-shadow property, you can generate a text shadow directly with our [CSS Text Shadow Generator](#).

Here you see how black text with a 4 pixel #DCACBA colored shadow looks like.

```
.shadow{ text-shadow: 4px 4px 2px #DCACBA
}
```

Border

The CSS property to change the border of an element to Hex DCACBA is called "border". The border property can be set on classes, ids or directly on the HTML element.

This example shows the color as border, it can be applied via the CSS property "border" or "border-color".

```
.border, #border, table{ border:4px solid
#DCACBA }
```

If only the border color should be changed use the property `border-color`.

```
.border{ border-color:#DCACBA }
```

If you want to add a box shadow in that color use:

Here you see how a box with a 4 pixel #DCACBA colored shadow looks like.

```
.boxshadow{ -moz-box-shadow:4px 4px 4px  
4px #DCACBA; -webkit-box-shadow:4px 4px  
4px 4px #DCACBA; box-shadow:4px 4px 4px  
4px #DCACBA }
```

Background

The CSS property to change the background color of an element to Hex DCACBA is called "background". The background property can be set on classes, ids or directly on the HTML element.

```
.background, #background, body{  
background:#DCACBA }
```

If only the background color should be changed can be used:

```
.background{ background-color:#DCACBA }
```

This example shows the color as background, it is applied via the CSS property "background".

To optimize and compress your CSS code, you can use our [online CSS compressor and optimizer](#) based on csstidy. If you want to create a linear or radial gradient as background or border, check our [CSS Gradient Generator](#).

Hey! You found this booklet interesting? Support Converting Colors with the new Membership Option!

The pro membership hides all ads, plus gives you double the colors in the color bucket, and more awesome pro features!

[Learn more, Memberships starting at \\$2.50/m!](#)

**Follow me
on Twitter!**

@ConvertingColor