

Converting Colors

Hex(DCAEB5)

Have a look what the booklet for
Hex(DCAEB5) contains.

Hex(DCAEB5)	3
<i>Conversions</i>	4
<i>Details</i>	6
<i>Harmonies</i>	11
<i>Previews</i>	23
<i>Color Blindness Simulation</i>	26
<i>CSS Examples</i>	29

Color

Hex(DCAEB5)

Conversions

Conversions Part 1

Format	Color
Hex	DCAEB5
RGB	220, 174, 181
RGB Percent	86%, 68%, 71%
CMY	0.1373, 0.3176, 0.2902
CMYK	0.00, 0.21, 0.18, 0.14
HSL	351°, 40%, 77%
HSV	351°, 21%, 86%
XYZ	52.9917, 48.8239, 50.3471
YIQ	188.5520, 25.1690, 11.9290

Conversions

Conversions Part 2

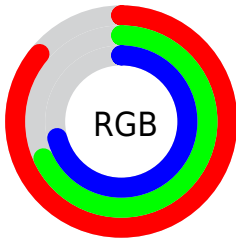
Format	Color
RYB	220, 174, 181
Decimal	14462645
CIELab	75.34, 17.81, 2.83
CIELCh	75, 18.031, 9.027
Yxy	48.8239, 0.3483, 0.3209
Android (android.graphics.Color)	4292652725 (0xFFDCAEB5)
YUV	188.5520, -3.7231, 27.5799
Hunter-Lab	69.8741, 13.0926, 6.1911

Details

The Hex color **DCAEB5** is a light color, and the websafe version is hex **CC9999**. A complement of this color would be **AEDCD5**, and the grayscale version is **BDBDBD**.

A 20% lighter version of the original color is **FFE6ED**, and **A47980** is the 20% darker color. If you saturate the color by 10%, you get **DC98A2**, and if you desaturate by 10%, it is **DCC4C8**.

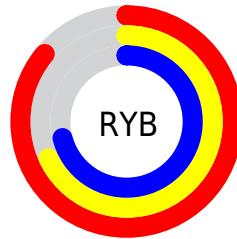
Distribution



Red (86%)

Green (68%)

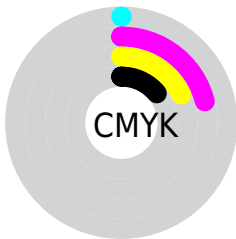
Blue (71%)



Red (86%)

Yellow (68%)

Blue (71%)

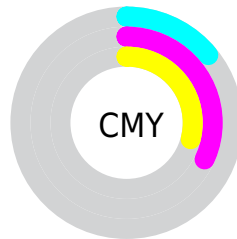


Cyan (0%)

Magenta (21%)

Yellow (18%)

Black (14%)



Cyan (14%)

Magenta (32%)

Yellow (29%)

Brightness & Saturation Gradients

These gradients show how the Hex color DCAEB5 changes by changing the brightness by 10 percent. The first figure shows a shift by +10% for each color and the second figure -10%.

Similar to the brightness gradients but the following saturation gradients show a change of the Hex color DCAEB5 by changing the saturation by 10% instead.

 DCAEB5

 DCAEB5

FFFFFF

 C0939A

 FFE6ED

 A47980

 8A6067

 70484F

 573138

 3E1C23

 28050D

 000000

 DCAEB5

 DCAEB5

 DC98A2

 DCC4C8

 DC8290

 DCDADA

 DC6C7D

 DCF0ED

 DC566A

 DCFFFF

 DC4058

 DC2A45

 DC1432

 DC0021

Harmonies

Analogous

The Analogous color harmony consists of three colors that are next to each other on the color wheel.



D4AFC6



DCAEB5



DBB0A5

Triad

The Triadic color harmony groups three colors that are evenly spaced from another and form a triangle on the color wheel.



DCAEB5



AFBF9F



9ABED8

Complementary

The Complementary color scheme is a pair of colors which are on the opposite of each other on the color wheel.



DCAEB5



AEDCD5

Split Complementary

Split-complementary colors differ from the complementary color scheme. The scheme consists of three colors, the original color and two neighbors of the complement color.



8EC2CE



DCAEB5



9CC2AD

Square

The Square scheme is like the rectangle color scheme, but the four colors are evenly spaced on the color wheel.



DCAEB5



C1BA99



90C3BE



ADB9DA

Rectangle

The Rectangle color scheme consists of four colors that form a rectangle on the color wheel.



DCAEB5



D5B39E



90C3BE



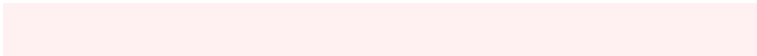
95C0D5

Sweetspot

The Sweet Spot groups the original color and five complimentary colors.



DCAEB5



FFF0F2



D4AEDC



807778



000000



808080

Same Dimension

The Same Dimension uses a secret algorithm to generate beautiful new colors.



DCAEB5



FFBFC9



DCBDAE



6E6364



AD001A



2E0007

Inverse Universe

The Inverse Universe completely reimagines the original color for something new.



DCAEB5



FFBFC9



AECDDC



6E6364



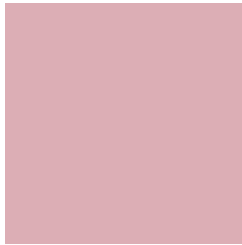
AD001A



2E0007

Previews

White Background



This preview shows how the Hex color DCAEB5 looks on a white background.

Color Contrast Check

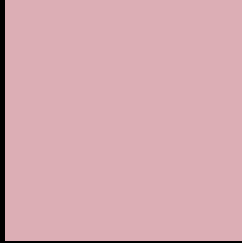
Large Text (above 18pt) WCAG AA × Fail

Any Text WCAG AA × Fail

Large Text (above 18pt) WCAG AAA × Fail

Any Text WCAG AAA × Fail

Black Background



This preview shows how the Hex color DCAEB5 looks on a black background.

Color Contrast Check

Large Text (above 18pt) WCAG AA ✓ Pass

Any Text WCAG AA ✓ Pass

Large Text (above 18pt) WCAG AAA ✓ Pass

Any Text WCAG AAA ✓ Pass

If you want to check with other color combinations, try the [Color Contrast Checker](#).

Hex DCAEB5 Background



This preview shows how black text looks on a background with the Hex color DCAEB5.

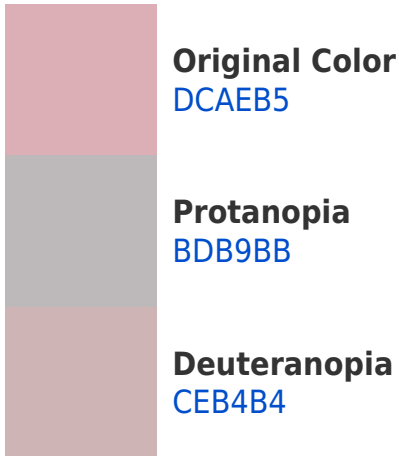


This preview shows how white text looks on a background with the Hex color DCAEB5.

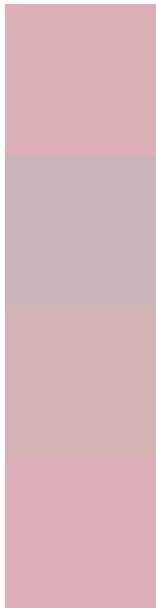
Color Blindness Simulation

Color vision deficiency is a very complex topic, and I could not describe the different causes any better than Wikipedia does, so if you want to learn more, you should check out their [article about color blindness](#).

Dichromacy



Trichromacy



Original Color
DCAEB5

Protanomaly
C8B5B9

Deuteranomaly
D3B2B4

Tritanomaly
DDADB9

Monochromacy



Original Color
DCAEB5

Achromatopsia
BDBDBD

Achromatomaly
C8B8BA

CSS Examples

Text

The CSS property to change the color of the text to Hex DCAEB5 is called "color". The color property can be set on classes, ids or directly on the HTML element.

This example shows how text in the color #DCAEB5 looks like.

```
.text, #text, p{  
    color:#DCAEB5  
}
```

If you want to add a text shadow in that color use the text-shadow property, you can generate a text shadow directly with our [CSS Text Shadow Generator](#).

Here you see how black text with a 4 pixel #DCAEB5 colored shadow looks like.

```
.shadow{ text-shadow: 4px 4px 2px #DCAEB5  
}
```

Border

The CSS property to change the border of an element to Hex DCAEB5 is called "border". The border property can be set on classes, ids or directly on the HTML element.

This example shows the color as border, it can be applied via the CSS property "border" or "border-color".

```
.border, #border, table{ border:4px solid  
#DCAEB5 }
```

If only the border color should be changed use the property `border-color`.

```
.border{ border-color:#DCAEB5 }
```

If you want to add a box shadow in that color use:

Here you see how a box with a 4 pixel #DCAEB5 colored shadow looks like.

```
.boxshadow{ -moz-box-shadow:4px 4px 4px  
4px #DCAEB5; -webkit-box-shadow:4px 4px  
4px 4px #DCAEB5; box-shadow:4px 4px 4px  
4px #DCAEB5 }
```

Background

The CSS property to change the background color of an element to Hex DCAEB5 is called "background". The background property can be set on classes, ids or directly on the HTML element.

```
.background, #background, body{  
background:#DCAEB5 }
```

If only the background color should be changed can be used:

```
.background{ background-color:#DCAEB5 }
```

This example shows the color as background, it is applied via the CSS property "background".

To optimize and compress your CSS code, you can use our [online CSS compressor and optimizer](#) based on csstidy. If you want to create a linear or radial gradient as background or border, check our [CSS Gradient Generator](#).

Hey! You found this booklet interesting? Support Converting Colors with the new Membership Option!

The pro membership hides all ads, plus gives you double the colors in the color bucket, and more awesome pro features!

[Learn more, Memberships starting at \\$2.50/m!](#)

**Follow me
on Twitter!**

@ConvertingColor