

# Converting Colors

Hex(DCB891)

Have a look what the booklet for  
Hex(DCB891) contains.

<b>Hex(DCB891)</b> .....	3
<b><i>Conversions</i></b> .....	4
<b><i>Details</i></b> .....	6
<b><i>Harmonies</i></b> .....	11
<b><i>Previews</i></b> .....	23
<b><i>Color Blindness Simulation</i></b> .....	26
<b><i>CSS Examples</i></b> .....	29

# **Color**

**Hex(DCB891)**

# Conversions

## Conversions Part 1

<b>Format</b>	<b>Color</b>
Hex	DCB891
RGB	220, 184, 145
RGB Percent	86%, 72%, 57%
CMY	0.1373, 0.2784, 0.4314
CMYK	0.00, 0.16, 0.34, 0.14
HSL	31°, 52%, 72%
HSV	31°, 34%, 86%
XYZ	51.7665, 51.5410, 34.0081
YIQ	190.3180, 33.9750, -4.4970

# Conversions

## Conversions Part 2

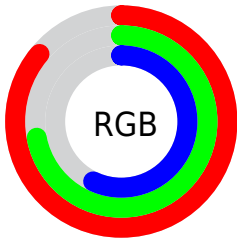
Format	Color
<a href="#">RYB</a>	<a href="#">214, 220, 145</a>
Decimal	<a href="#">14465169</a>
CIELab	<a href="#">77.01, 7.44, 24.66</a>
CIELCh	<a href="#">77, 25.755, 73.210</a>
Yxy	<a href="#">51.5410, 0.3770, 0.3753</a>
Android (android.graphics.Color)	<a href="#">4292655249 (0xFFDCB891)</a>
YUV	<a href="#">190.3180, -22.3418, 26.0311</a>
Hunter-Lab	<a href="#">71.7920, 3.0736, 22.1686</a>

# Details

The Hex color **DCB891** is a light color, and the websafe version is hex **FFCC99**. A complement of this color would be **91B5DC**, and the grayscale version is **BFBFBF**.

A 20% lighter version of the original color is **FFF0C7**, and **A4835E** is the 20% darker color. If you saturate the color by 10%, you get **DCAD7B**, and if you desaturate by 10%, it is **DCC3A7**.

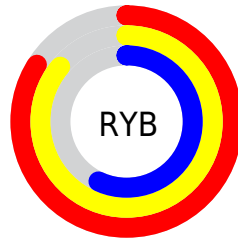
# Distribution



Red (86%)

Green (72%)

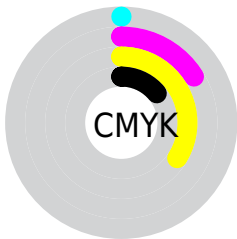
Blue (57%)



Red (84%)

Yellow (86%)

Blue (57%)

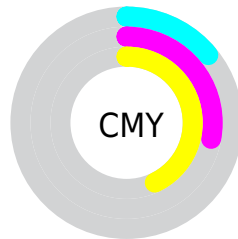


Cyan (0%)

Magenta (16%)

Yellow (34%)

Black (14%)



Cyan (14%)

Magenta (28%)

Yellow (43%)

# Brightness & Saturation Gradients

These gradients show how the Hex color DCB891 changes by changing the brightness by 10 percent. The first figure shows a shift by +10% for each color and the second figure -10%.

Similar to the brightness gradients but the following saturation gradients show a change of the Hex color DCB891 by changing the saturation by 10% instead.



 DCB891

 DCB891

FFFFFF

 C09D77

 FFF0C7

 A4835E

 FFFFFE3

 896A46

 6E522F

 553B1A

 3C2501

 241100

 000000

 DCB891

 DCB891

 DCAD7B

 DCC3A7

 DCA365

 DCCDBD

 DC984F

 DCD8D3

 DC8E39

 DCE2E9

 DC8323

 DCEDFF

 DC790D

 DCF7FF

 DC7200

 DCFFFF

# Harmonies

## Analogous

The Analogous color harmony consists of three colors that are next to each other on the color wheel.



EBB19F



DCB891



C5C090

# Triad

The Triadic color harmony groups three colors that are evenly spaced from another and form a triangle on the color wheel.



DCB891



7DCCC8



CFB4E1

# Complementary

The Complementary color scheme is a pair of colors which are on the opposite of each other on the color wheel.



DCB891



91B5DC

# Split Complementary

Split-complementary colors differ from the complementary color scheme. The scheme consists of three colors, the original color and two neighbors of the complement color.



B0BDEC



DCB891



7CCADE

# Square

The Square scheme is like the rectangle color scheme, but the four colors are evenly spaced on the color wheel.



DCB891



90CB80



90C4EB



E5AECC

# Rectangle

The Rectangle color scheme consists of four colors that form a rectangle on the color wheel.



DCB891



B3C596



90C4EB



C5B7E6

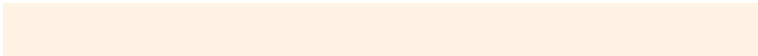


# Sweetspot

The Sweet Spot groups the original color and five complimentary colors.



DCB891



FFF3E6



DC91B5



807870



000000



808080



# Same Dimension

The Same Dimension uses a secret algorithm to generate beautiful new colors.



DCB891



FFCD96



DBDC91



6E6863



AD5A00



2E1800

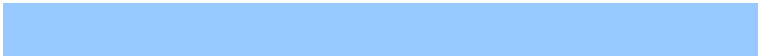


# Inverse Universe

The Inverse Universe completely reimagines the original color for something new.



91B5DC



96C9FF



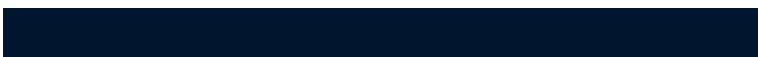
9291DC



63686E



0053AD

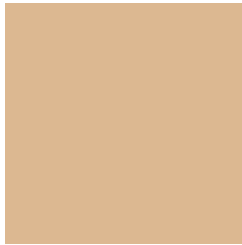


00162E



# Previews

## White Background



This preview shows how the Hex color DCB891 looks on a white background.

## Color Contrast Check

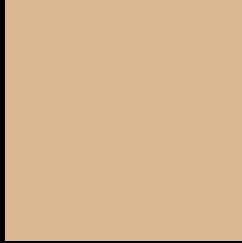
Large Text (above 18pt) WCAG AA × Fail

Any Text WCAG AA × Fail

Large Text (above 18pt) WCAG AAA × Fail

Any Text WCAG AAA × Fail

# Black Background



This preview shows how the Hex color DCB891 looks on a black background.

## Color Contrast Check

Large Text (above 18pt) WCAG AA ✓ Pass

Any Text WCAG AA ✓ Pass

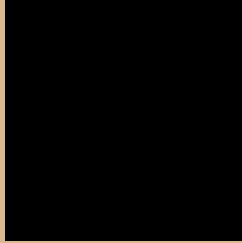
Large Text (above 18pt) WCAG AAA ✓ Pass

Any Text WCAG AAA ✓ Pass

If you want to check with other color combinations, try the [Color Contrast Checker](#).



## Hex DCB891 Background



This preview shows how black text looks on a background with the Hex color DCB891.



This preview shows how white text looks on a background with the Hex color DCB891.

# Color Blindness Simulation

Color vision deficiency is a very complex topic, and I could not describe the different causes any better than Wikipedia does, so if you want to learn more, you should check out their [article about color blindness](#).

## Dichromacy





**Tritanopia**  
E1B2BF

# Trichromacy



# Monochromacy



# CSS Examples

## Text

The CSS property to change the color of the text to Hex DCB891 is called "color". The color property can be set on classes, ids or directly on the HTML element.

This example shows how text in the color #DCB891 looks like.

```
.text, #text, p{  
    color:#DCB891  
}
```

If you want to add a text shadow in that color use the text-shadow property, you can generate a text shadow directly with our [CSS Text Shadow Generator](#).

Here you see how black text with a 4 pixel #DCB891 colored shadow looks like.

```
.shadow{ text-shadow: 4px 4px 2px #DCB891
}
```

## Border

The CSS property to change the border of an element to Hex DCB891 is called "border". The border property can be set on classes, ids or directly on the HTML element.

This example shows the color as border, it can be applied via the CSS property "border" or "border-color".

```
.border, #border, table{ border:4px solid
#DCB891 }
```

If only the border color should be changed use the property `border-color`.

```
.border{ border-color:#DCB891 }
```

If you want to add a box shadow in that color use:

Here you see how a box with a 4 pixel #DCB891 colored shadow looks like.

```
.boxshadow{ -moz-box-shadow:4px 4px 4px  
4px #DCB891; -webkit-box-shadow:4px 4px  
4px 4px #DCB891; box-shadow:4px 4px 4px  
4px #DCB891 }
```

# Background

The CSS property to change the background color of an element to Hex DCB891 is called "background". The background property can be set on classes, ids or directly on the HTML element.

```
.background, #background, body{  
background:#DCB891 }
```

If only the background color should be changed can be used:

```
.background{ background-color:#DCB891 }
```

This example shows the color as background, it is applied via the CSS property "background".

To optimize and compress your CSS code, you can use our [online CSS compressor and optimizer](#) based on csstidy. If you want to create a linear or radial gradient as background or border, check our [CSS Gradient Generator](#).



Hey! You found this booklet interesting? Support Converting Colors with the new Membership Option!

The pro membership hides all ads, plus gives you double the colors in the color bucket, and more awesome pro features!

**[Learn more, Memberships starting at \\$2.50/m!](#)**

**Follow me  
on Twitter!**

@ConvertingColor