

Converting Colors

Hex(DCBB97)

Have a look what the booklet for
Hex(DCBB97) contains.

Hex(DCBB97)	3
<i>Conversions</i>	4
<i>Details</i>	6
<i>Harmonies</i>	11
<i>Previews</i>	23
<i>Color Blindness Simulation</i>	26
<i>CSS Examples</i>	29

Color

Hex(DCBB97)

Conversions

Conversions Part 1

Format	Color
Hex	DCBB97
RGB	220, 187, 151
RGB Percent	86%, 73%, 59%
CMY	0.1373, 0.2667, 0.4078
CMYK	0.00, 0.15, 0.31, 0.14
HSL	31°, 50%, 73%
HSV	31°, 31%, 86%
XYZ	52.8714, 52.9907, 36.7198
YIQ	192.7630, 31.2240, -4.2000

Conversions

Conversions Part 2

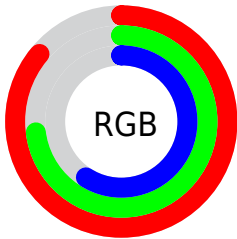
Format	Color
RYB	214, 220, 151
Decimal	14465943
CIELab	77.87, 6.60, 22.63
CIElCh	78, 23.575, 73.740
Yxy	52.9907, 0.3708, 0.3717
Android (android.graphics.Color)	4292656023 (0xFFDCBB97)
YUV	192.7630, -20.5892, 23.8868
Hunter-Lab	72.7947, 2.2555, 21.0487

Details

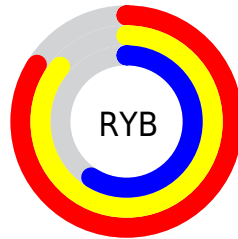
The Hex color **DCBB97** is a light color, and the websafe version is hex **FFCC99**. A complement of this color would be **97B8DC**, and the grayscale version is **C1C1C1**.

A 20% lighter version of the original color is **FFF3CD**, and **A48664** is the 20% darker color. If you saturate the color by 10%, you get **DCB081**, and if you desaturate by 10%, it is **DCC6AD**.

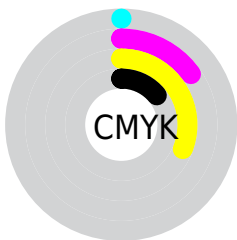
Distribution



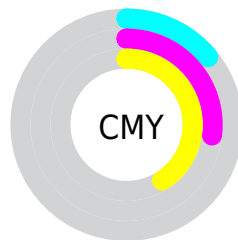
- Red (86%)
- Green (73%)
- Blue (59%)



- Red (84%)
- Yellow (86%)
- Blue (59%)



- Cyan (0%)
- Magenta (15%)
- Yellow (31%)
- Black (14%)



- Cyan (14%)
- Magenta (27%)
- Yellow (41%)

Brightness & Saturation Gradients

These gradients show how the Hex color DCBB97 changes by changing the brightness by 10 percent. The first figure shows a shift by +10% for each color and the second figure -10%.

Similar to the brightness gradients but the following saturation gradients show a change of the Hex color DCBB97 by changing the saturation by 10% instead.

 DCBB97

 DCBB97

FFFFFF

 C0A07D

 FFF3CD

 A48664

 FFFFFEA

 896D4C

 6F5435

 553D1F

 3D2808

 261300

 000000

 DCBB97

 DCBB97

 DCB081

 DCC6AD

 DCA66B

 DCD0C3

 DC9B55

 DCDBD9

 DC913F

 DCE5EF

 DC8629

 DCF0FF

 DC7C13

 DCFAFF

 DC7300

 DCFFFF

Harmonies

Analogous

The Analogous color harmony consists of three colors that are next to each other on the color wheel.



EAB4A3



DCBB97



C7C296

Triad

The Triadic color harmony groups three colors that are evenly spaced from another and form a triangle on the color wheel.



DCBB97



86CDCA



D1B8E0

Complementary

The Complementary color scheme is a pair of colors which are on the opposite of each other on the color wheel.



DCBB97



97B8DC

Split Complementary

Split-complementary colors differ from the complementary color scheme. The scheme consists of three colors, the original color and two neighbors of the complement color.



B4BFEB



DCBB97



85CBDE

Square

The Square scheme is like the rectangle color scheme, but the four colors are evenly spaced on the color wheel.



DCBB97



96CCB4



98C6EA



E5B2CD

Rectangle

The Rectangle color scheme consists of four colors that form a rectangle on the color wheel.



DCBB97



B6C79C



98C6EA



C8BAE5

Sweetspot

The Sweet Spot groups the original color and five complimentary colors.



DCBB97



FFF4E8



DC97B8



807971



000000



808080

Same Dimension

The Same Dimension uses a secret algorithm to generate beautiful new colors.



DCBB97



FFD19E



DBDC97



6E6863



AD5A00



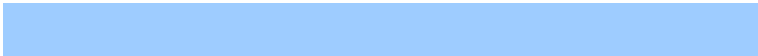
2E1800

Inverse Universe

The Inverse Universe completely reimagines the original color for something new.



97B8DC



9ECCFF



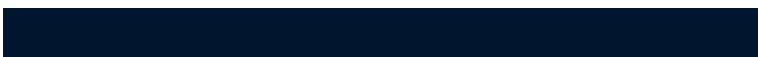
9897DC



63686E



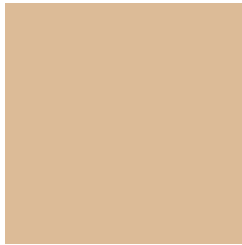
0053AD



00162E

Previews

White Background



This preview shows how the Hex color DCBB97 looks on a white background.

Color Contrast Check

Large Text (above 18pt) WCAG AA × Fail

Any Text WCAG AA × Fail

Large Text (above 18pt) WCAG AAA × Fail

Any Text WCAG AAA × Fail

Black Background



This preview shows how the Hex color DCBB97 looks on a black background.

Color Contrast Check

Large Text (above 18pt) WCAG AA ✓ Pass

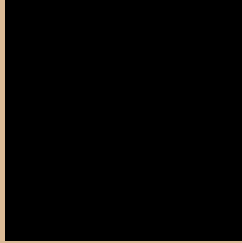
Any Text WCAG AA ✓ Pass

Large Text (above 18pt) WCAG AAA ✓ Pass

Any Text WCAG AAA ✓ Pass

If you want to check with other color combinations, try the [Color Contrast Checker](#).

Hex DCBB97 Background



This preview shows how black text looks on a background with the Hex color DCBB97.



This preview shows how white text looks on a background with the Hex color DCBB97.

Color Blindness Simulation

Color vision deficiency is a very complex topic, and I could not describe the different causes any better than Wikipedia does, so if you want to learn more, you should check out their [article about color blindness](#).

Dichromacy





Tritanopia
E1B5C3

Trichromacy



Monochromacy



CSS Examples

Text

The CSS property to change the color of the text to Hex DCBB97 is called "color". The color property can be set on classes, ids or directly on the HTML element.

This example shows how text in the color #DCBB97 looks like.

```
.text, #text, p{  
    color:#DCBB97  
}
```

If you want to add a text shadow in that color use the text-shadow property, you can generate a text shadow directly with our [CSS Text Shadow Generator](#).

Here you see how black text with a 4 pixel #DCBB97 colored shadow looks like.

```
.shadow{ text-shadow: 4px 4px 2px #DCBB97  
}
```

Border

The CSS property to change the border of an element to Hex DCBB97 is called "border". The border property can be set on classes, ids or directly on the HTML element.

This example shows the color as border, it can be applied via the CSS property "border" or "border-color".

```
.border, #border, table{ border:4px solid  
#DCBB97 }
```

If only the border color should be changed use the property `border-color`.

```
.border{ border-color:#DCBB97 }
```

If you want to add a box shadow in that color use:

Here you see how a box with a 4 pixel #DCBB97 colored shadow looks like.

```
.boxshadow{ -moz-box-shadow:4px 4px 4px  
4px #DCBB97; -webkit-box-shadow:4px 4px  
4px 4px #DCBB97; box-shadow:4px 4px 4px  
4px #DCBB97 }
```

Background

The CSS property to change the background color of an element to Hex DCBB97 is called "background". The background property can be set on classes, ids or directly on the HTML element.

```
.background, #background, body{  
background:#DCBB97 }
```

If only the background color should be changed can be used:

```
.background{ background-color:#DCBB97 }
```

This example shows the color as background, it is applied via the CSS property "background".

To optimize and compress your CSS code, you can use our [online CSS compressor and optimizer](#) based on csstidy. If you want to create a linear or radial gradient as background or border, check our [CSS Gradient Generator](#).

Hey! You found this booklet interesting? Support Converting Colors with the new Membership Option!

The pro membership hides all ads, plus gives you double the colors in the color bucket, and more awesome pro features!

[Learn more, Memberships starting at \\$2.50/m!](#)

**Follow me
on Twitter!**

@ConvertingColor