

Converting Colors

Hex(DCBC97)

Have a look what the booklet for
Hex(DCBC97) contains.

Hex(DCBC97)	3
<i>Conversions</i>	4
<i>Details</i>	6
<i>Harmonies</i>	11
<i>Previews</i>	23
<i>Color Blindness Simulation</i>	26
<i>CSS Examples</i>	29

Color

Hex(DCBC97)

Conversions

Conversions Part 1

Format	Color
Hex	DCBC97
RGB	220, 188, 151
RGB Percent	86%, 74%, 59%
CMY	0.1373, 0.2627, 0.4078
CMYK	0.00, 0.15, 0.31, 0.14
HSL	32°, 50%, 73%
HSV	32°, 31%, 86%
XYZ	53.0843, 53.4164, 36.7907
YIQ	193.3500, 30.9490, -4.7230

Conversions

Conversions Part 2

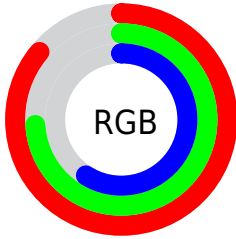
Format	Color
R _Y B	211, 220, 151
Decimal	14466199
CIE Lab	78.12, 6.07, 22.97
CIE LCh	78, 23.763, 75.198
Yxy	53.4164, 0.3705, 0.3728
Android (android.graphics.Color)	4292656279 (0xFFDCBC97)
YUV	193.3500, -20.8785, 23.3721
Hunter-Lab	73.0866, 1.7469, 21.3149

Details

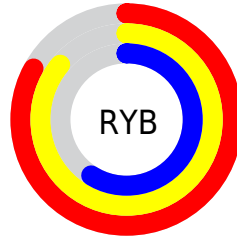
The Hex color **DCBC97** is a light color, and the websafe version is hex **FFCC99**. A complement of this color would be **97B7DC**, and the grayscale version is **C2C2C2**.

A 20% lighter version of the original color is **FFF4CD**, and **A48764** is the 20% darker color. If you saturate the color by 10%, you get **DCB281**, and if you desaturate by 10%, it is **DCC6AD**.

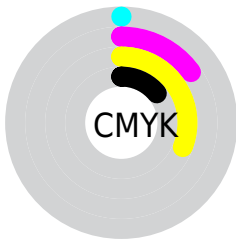
Distribution



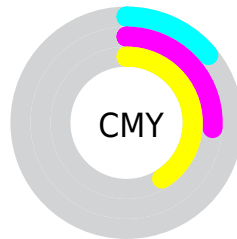
- Red (86%)
- Green (74%)
- Blue (59%)



- Red (83%)
- Yellow (86%)
- Blue (59%)



- Cyan (0%)
- Magenta (15%)
- Yellow (31%)
- Black (14%)



- Cyan (14%)
- Magenta (26%)
- Yellow (41%)

Brightness & Saturation Gradients

These gradients show how the Hex color DCBC97 changes by changing the brightness by 10 percent. The first figure shows a shift by +10% for each color and the second figure -10%.

Similar to the brightness gradients but the following saturation gradients show a change of the Hex color DCBC97 by changing the saturation by 10% instead.

 DCBC97

 DCBC97

FFFFFF

 C0A17D

 FFF4CD

 A48764

 FFFFFEA

 896E4C

 6F5535

 553E1F

 3D2808

 261400

 000000

 DCBC97

 DCBC97

 DCB281

 DCC6AD

 DCA86B

 DCD0C3

 DC9D55

 DCDBD9

 DC933F

 DCE5EF

 DC8929

 DCEFFF

 DC7F13

 DCF9FF

 DC7600

 DCFFFF

Harmonies

Analogous

The Analogous color harmony consists of three colors that are next to each other on the color wheel.



EBB5A3



DCBC97



C6C397

Triad

The Triadic color harmony groups three colors that are evenly spaced from another and form a triangle on the color wheel.



DCBC97



85CECC



D3B8E0

Complementary

The Complementary color scheme is a pair of colors which are on the opposite of each other on the color wheel.



DCBC97



97B7DC

Split Complementary

Split-complementary colors differ from the complementary color scheme. The scheme consists of three colors, the original color and two neighbors of the complement color.



B6BFEB



DCBC97



86CCE0

Square

The Square scheme is like the rectangle color scheme, but the four colors are evenly spaced on the color wheel.



DCBC97



95CDB5



99C6EB



E7B3CD

Rectangle

The Rectangle color scheme consists of four colors that form a rectangle on the color wheel.



DCBC97



B6C89D



99C6EB



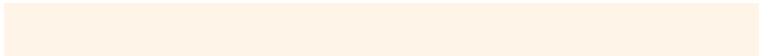
CABAE5

Sweetspot

The Sweet Spot groups the original color and five complimentary colors.



DCBC97



FFF4E8



DC97B7



807971



000000



808080

Same Dimension

The Same Dimension uses a secret algorithm to generate beautiful new colors.



DCBC97



FFD29E



DADC97



6E6963



AD5D00



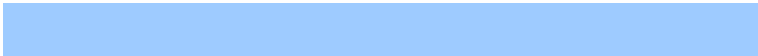
2E1900

Inverse Universe

The Inverse Universe completely reimagines the original color for something new.



97B7DC



9ECBFF



9997DC



63686E



0050AD



00152E

Previews

White Background



This preview shows how the Hex color DCBC97 looks on a white background.

Color Contrast Check

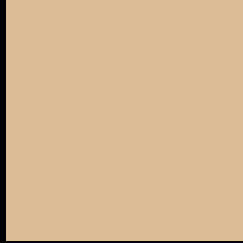
Large Text (above 18pt) WCAG AA × Fail

Any Text WCAG AA × Fail

Large Text (above 18pt) WCAG AAA × Fail

Any Text WCAG AAA × Fail

Black Background



This preview shows how the Hex color DCBC97 looks on a black background.

Color Contrast Check

Large Text (above 18pt) WCAG AA ✓ Pass

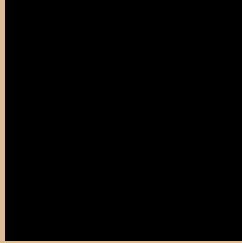
Any Text WCAG AA ✓ Pass

Large Text (above 18pt) WCAG AAA ✓ Pass

Any Text WCAG AAA ✓ Pass

If you want to check with other color combinations, try the [Color Contrast Checker](#).

Hex DCBC97 Background



This preview shows how black text looks on a background with the Hex color DCBC97.



This preview shows how white text looks on a background with the Hex color DCBC97.

Color Blindness Simulation

Color vision deficiency is a very complex topic, and I could not describe the different causes any better than Wikipedia does, so if you want to learn more, you should check out their [article about color blindness](#).

Dichromacy



Original Color
DCBC97

Protanopia
CEC199

Deuteranopia
E2BA97



Tritanopia
E1B6C4

Trichromacy



Monochromacy



CSS Examples

Text

The CSS property to change the color of the text to Hex DCBC97 is called "color". The color property can be set on classes, ids or directly on the HTML element.

This example shows how text in the color #DCBC97 looks like.

```
.text, #text, p{  
    color:#DCBC97  
}
```

If you want to add a text shadow in that color use the text-shadow property, you can generate a text shadow directly with our [CSS Text Shadow Generator](#).

Here you see how black text with a 4 pixel #DCBC97 colored shadow looks like.

```
.shadow{ text-shadow: 4px 4px 2px #DCBC97
}
```

Border

The CSS property to change the border of an element to Hex DCBC97 is called "border". The border property can be set on classes, ids or directly on the HTML element.

This example shows the color as border, it can be applied via the CSS property "border" or "border-color".

```
.border, #border, table{ border:4px solid
#DCBC97 }
```

If only the border color should be changed use the property `border-color`.

```
.border{ border-color:#DCBC97 }
```

If you want to add a box shadow in that color use:

Here you see how a box with a 4 pixel #DCBC97 colored shadow looks like.

```
.boxshadow{ -moz-box-shadow:4px 4px 4px  
4px #DCBC97; -webkit-box-shadow:4px 4px  
4px 4px #DCBC97; box-shadow:4px 4px 4px  
4px #DCBC97 }
```

Background

The CSS property to change the background color of an element to Hex DCBC97 is called "background". The background property can be set on classes, ids or directly on the HTML element.

```
.background, #background, body{  
background:#DCBC97 }
```

If only the background color should be changed can be used:

```
.background{ background-color:#DCBC97 }
```

This example shows the color as background, it is applied via the CSS property "background".

To optimize and compress your CSS code, you can use our [online CSS compressor and optimizer](#) based on csstidy. If you want to create a linear or radial gradient as background or border, check our [CSS Gradient Generator](#).

Hey! You found this booklet interesting? Support Converting Colors with the new Membership Option!

The pro membership hides all ads, plus gives you double the colors in the color bucket, and more awesome pro features!

[Learn more, Memberships starting at \\$2.50/m!](#)

**Follow me
on Twitter!**

@ConvertingColor