

Converting Colors

Hex(DCBEC3)

Have a look what the booklet for
Hex(DCBEC3) contains.

Hex(DCBEC3)	3
<i>Conversions</i>	4
<i>Details</i>	6
<i>Harmonies</i>	11
<i>Previews</i>	23
<i>Color Blindness Simulation</i>	26
<i>CSS Examples</i>	29

Color

Hex(DCBEC3)

Conversions

Conversions Part 1

Format	Color
Hex	DCBEC3
RGB	220, 190, 195
RGB Percent	86%, 75%, 76%
CMY	0.1373, 0.2549, 0.2353
CMYK	0.00, 0.14, 0.11, 0.14
HSL	350°, 30%, 80%
HSV	350°, 14%, 86%
XYZ	57.7790, 55.9827, 59.3902
YIQ	199.5400, 16.2750, 7.9150

Conversions

Conversions Part 2

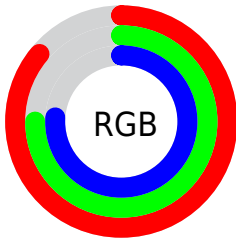
Format	Color
R _Y B	220, 190, 195
Decimal	14466755
CIE Lab	79.60, 11.47, 1.42
CIE LCh	80, 11.561, 7.072
Yxy	55.9827, 0.3337, 0.3233
Android (android.graphics.Color)	4292656835 (0xFFDCBEC3)
YUV	199.5400, -2.2382, 17.9434
Hunter-Lab	74.8216, 6.9041, 5.3132

Details

The Hex color **DCBEC3** is a light color, and the websafe version is hex **FFCCCC**. A complement of this color would be **BEDCD7**, and the grayscale version is **C8C8C8**.

A 20% lighter version of the original color is **FFF6FC**, and **A5898D** is the 20% darker color. If you saturate the color by 10%, you get **DCA8B1**, and if you desaturate by 10%, it is **DCD4D5**.

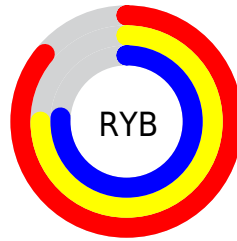
Distribution



Red (86%)

Green (75%)

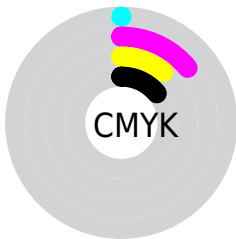
Blue (76%)



Red (86%)

Yellow (75%)

Blue (76%)

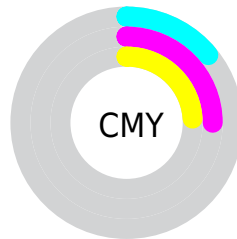


Cyan (0%)

Magenta (14%)

Yellow (11%)

Black (14%)



Cyan (14%)

Magenta (25%)

Yellow (24%)

Brightness & Saturation Gradients

These gradients show how the Hex color DCBEC3 changes by changing the brightness by 10 percent. The first figure shows a shift by +10% for each color and the second figure -10%.

Similar to the brightness gradients but the following saturation gradients show a change of the Hex color DCBEC3 by changing the saturation by 10% instead.

 DCBEC3

FFFFFF


 FFF6FC

 DCBEC3

 C0A3A8

 A5898D

 8A6F74

 71575B

 583F44

 40292E

 2A1519

 150000

 000000

 DCBEC3

 DCBEC3

 DCA8B1

 DCD4D5

 DC929E

 DCEAE8

 DC7C8C

 DCFFFA

 DC667A

 DCFFFF

 DC5067

 DC3A55

 DC2443

 DC0E30

 DC0025

Harmonies

Analogous

The Analogous color harmony consists of three colors that are next to each other on the color wheel.



D6BFCE



DCBEC3



DCBFB9

Triad

The Triadic color harmony groups three colors that are evenly spaced from another and form a triangle on the color wheel.



DCBEC3



BFC9B4



B1C9D9

Complementary

The Complementary color scheme is a pair of colors which are on the opposite of each other on the color wheel.



DCBEC3



BEDCD7

Split Complementary

Split-complementary colors differ from the complementary color scheme. The scheme consists of three colors, the original color and two neighbors of the complement color.



ABCBD2



DCBEC3



B4CBBD

Square

The Square scheme is like the rectangle color scheme, but the four colors are evenly spaced on the color wheel.



DCBEC3



CCC5B0



ACCCC7



BDC5DA

Rectangle

The Rectangle color scheme consists of four colors that form a rectangle on the color wheel.



DCBEC3



D9C1B4



ACCC7



AECAD7

Sweetspot

The Sweet Spot groups the original color and five complimentary colors.



DCBEC3



FFF5F6



D7BEDC



80797A



000000



808080

Same Dimension

The Same Dimension uses a secret algorithm to generate beautiful new colors.



DCBEC3



FFD6DD



DCC8BE



6E6365



AD001D



2E0008

Inverse Universe

The Inverse Universe completely reimagines the original color for something new.



DCBEC3



FFD6DD



BED2DC



6E6365



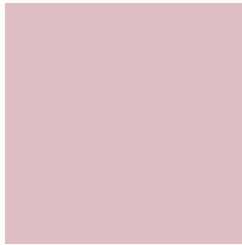
AD001D



2E0008

Previews

White Background



This preview shows how the Hex color DCBEC3 looks on a white background.

Color Contrast Check

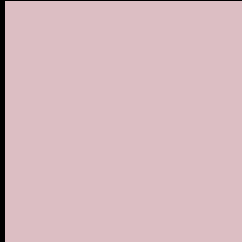
Large Text (above 18pt) WCAG AA × Fail

Any Text WCAG AA × Fail

Large Text (above 18pt) WCAG AAA × Fail

Any Text WCAG AAA × Fail

Black Background



This preview shows how the Hex color DCBEC3 looks on a black background.

Color Contrast Check

Large Text (above 18pt) WCAG AA ✓ Pass

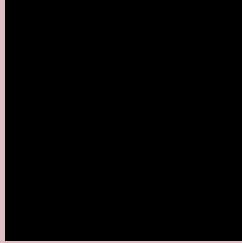
Any Text WCAG AA ✓ Pass

Large Text (above 18pt) WCAG AAA ✓ Pass

Any Text WCAG AAA ✓ Pass

If you want to check with other color combinations, try the [Color Contrast Checker](#).

Hex DCBEC3 Background



This preview shows how black text looks on a background with the Hex color DCBEC3.

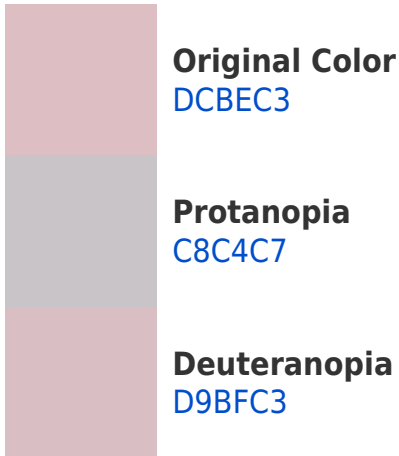


This preview shows how white text looks on a background with the Hex color DCBEC3.

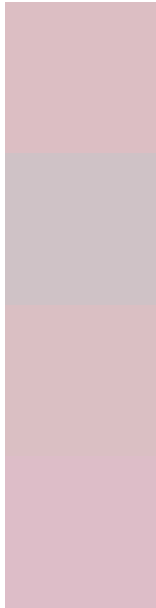
Color Blindness Simulation

Color vision deficiency is a very complex topic, and I could not describe the different causes any better than Wikipedia does, so if you want to learn more, you should check out their [article about color blindness](#).

Dichromacy



Trichromacy



Original Color
DCBEC3

Protanomaly
CFC2C6

Deuteranomaly
DABFC3

Tritanomaly
DDBDC8

Monochromacy



Original Color
DCBEC3

Achromatopsia
C8C8C8

Achromatomaly
CFC4C6

CSS Examples

Text

The CSS property to change the color of the text to Hex DCBEC3 is called "color". The color property can be set on classes, ids or directly on the HTML element.

This example shows how text in the color #DCBEC3 looks like.

```
.text, #text, p{  
    color:#DCBEC3  
}
```

If you want to add a text shadow in that color use the text-shadow property, you can generate a text shadow directly with our [CSS Text Shadow Generator](#).

Here you see how black text with a 4 pixel #DCBEC3 colored shadow looks like.

```
.shadow{ text-shadow: 4px 4px 2px #DCBEC3  
}
```

Border

The CSS property to change the border of an element to Hex DCBEC3 is called "border". The border property can be set on classes, ids or directly on the HTML element.

This example shows the color as border, it can be applied via the CSS property "border" or "border-color".

```
.border, #border, table{ border:4px solid  
#DCBEC3 }
```

If only the border color should be changed use the property `border-color`.

```
.border{ border-color:#DCBEC3 }
```

If you want to add a box shadow in that color use:

Here you see how a box with a 4 pixel #DCBEC3 colored shadow looks like.

```
.boxshadow{ -moz-box-shadow:4px 4px 4px  
4px #DCBEC3; -webkit-box-shadow:4px 4px  
4px 4px #DCBEC3; box-shadow:4px 4px 4px  
4px #DCBEC3 }
```

Background

The CSS property to change the background color of an element to Hex DCBEC3 is called "background". The background property can be set on classes, ids or directly on the HTML element.

```
.background, #background, body{  
background:#DCBEC3 }
```

If only the background color should be changed can be used:

```
.background{ background-color:#DCBEC3 }
```

This example shows the color as background, it is applied via the CSS property "background".

To optimize and compress your CSS code, you can use our [online CSS compressor and optimizer](#) based on csstidy. If you want to create a linear or radial gradient as background or border, check our [CSS Gradient Generator](#).

Hey! You found this booklet interesting? Support Converting Colors with the new Membership Option!

The pro membership hides all ads, plus gives you double the colors in the color bucket, and more awesome pro features!

[Learn more, Memberships starting at \\$2.50/m!](#)

**Follow me
on Twitter!**

@ConvertingColor