

Converting Colors

Hex(DCBFBF)

Have a look what the booklet for
Hex(DCBFBF) contains.

Hex(DCBFBF)	3
<i>Conversions</i>	4
<i>Details</i>	6
<i>Harmonies</i>	11
<i>Previews</i>	23
<i>Color Blindness Simulation</i>	26
<i>CSS Examples</i>	29

Color

Hex(DCBFBF)

Conversions

Conversions Part 1

Format	Color
Hex	DCBFBF
RGB	220, 191, 191
RGB Percent	86%, 75%, 75%
CMY	0.1373, 0.2510, 0.2510
CMYK	0.00, 0.13, 0.13, 0.14
HSL	0°, 29%, 81%
HSV	0°, 13%, 86%
XYZ	57.5500, 56.2388, 57.1122
YIQ	199.6710, 17.2840, 6.1480

Conversions

Conversions Part 2

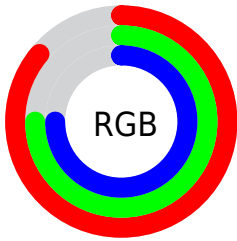
Format	Color
R _Y B	220, 191, 191
Decimal	14467007
CIE Lab	79.75, 10.28, 3.79
CIE LCh	80, 10.961, 20.233
Yxy	56.2388, 0.3367, 0.3291
Android (android.graphics.Color)	4292657087 (0xFFDCBFBF)
YUV	199.6710, -4.2748, 17.8285
Hunter-Lab	74.9926, 5.7456, 7.3412

Details

The Hex color **DCBFBF** is a light color, and the websafe version is hex **FFCCCC**. A complement of this color would be **BFDCDC**, and the grayscale version is **C8C8C8**.

A 20% lighter version of the original color is **FFF7F7**, and **A58A8A** is the 20% darker color. If you saturate the color by 10%, you get **DCA9A9**, and if you desaturate by 10%, it is **DCD5D5**.

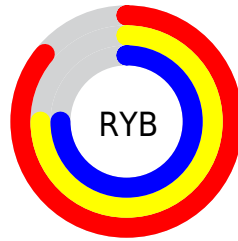
Distribution



Red (86%)

Green (75%)

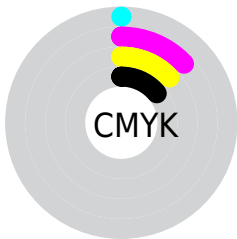
Blue (75%)



Red (86%)

Yellow (75%)

Blue (75%)

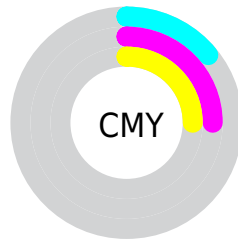


Cyan (0%)

Magenta (13%)

Yellow (13%)

Black (14%)



Cyan (14%)

Magenta (25%)

Yellow (25%)

Brightness & Saturation Gradients

These gradients show how the Hex color DCBFBF changes by changing the brightness by 10 percent. The first figure shows a shift by +10% for each color and the second figure -10%.

Similar to the brightness gradients but the following saturation gradients show a change of the Hex color DCBFBF by changing the saturation by 10% instead.

 DCBFBF

 DCBFBF


FFFFFF

 C0A4A4

 FFF7F7

 A58A8A

 8A7070

 715858

 584041

 402A2B

 291516

 150000

 000000

 DCBFBF

 DCBFBF

 DCA9A9

 DCD5D5

 DC9393

 DCEBEB

 DC7D7D

 DCFFFF

 DC6767

 DC5151

 DC3B3B

 DC2525

 DC0F0F

 DC0000

Harmonies

Analogous

The Analogous color harmony consists of three colors that are next to each other on the color wheel.



D9BFC9



DCBFBF



D9C1B6

Triad

The Triadic color harmony groups three colors that are evenly spaced from another and form a triangle on the color wheel.



DCBFBF



BBCAB8



B7C8D9

Complementary

The Complementary color scheme is a pair of colors which are on the opposite of each other on the color wheel.



DCBFBF



BFDCDC

Split Complementary

Split-complementary colors differ from the complementary color scheme. The scheme consists of three colors, the original color and two neighbors of the complement color.



AFCAD5



DCBFBF



B1CCC2

Square

The Square scheme is like the rectangle color scheme, but the four colors are evenly spaced on the color wheel.



DCBFBF



C7C7B2



ACCCCC



C4C4D9

Rectangle

The Rectangle color scheme consists of four colors that form a rectangle on the color wheel.



DCBFBF



D5C3B3



ACCCCC



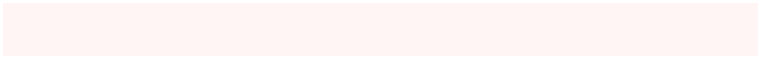
B4C9D9

Sweetspot

The Sweet Spot groups the original color and five complimentary colors.



DCBFBF



FFF5F5



DCBFDC



807979



000000



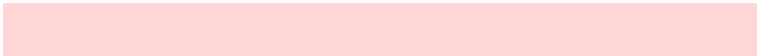
808080

Same Dimension

The Same Dimension uses a secret algorithm to generate beautiful new colors.



DCBFBF



FFD6D6



DCCEBF



6E6363



AD0000



2E0000

Inverse Universe

The Inverse Universe completely reimagines the original color for something new.



BFDCDC



D6FFFF



BFCEDC



636E6E



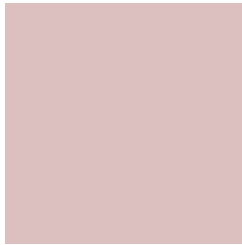
00ADAD



002E2E

Previews

White Background



This preview shows how the Hex color DCBFBF looks on a white background.

Color Contrast Check

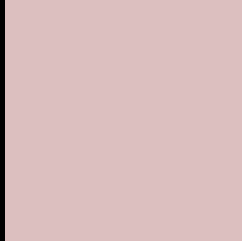
Large Text (above 18pt) WCAG AA × Fail

Any Text WCAG AA × Fail

Large Text (above 18pt) WCAG AAA × Fail

Any Text WCAG AAA × Fail

Black Background



This preview shows how the Hex color DCBFBF looks on a black background.

Color Contrast Check

Large Text (above 18pt) WCAG AA ✓ Pass

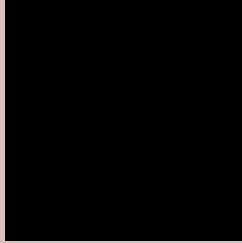
Any Text WCAG AA ✓ Pass

Large Text (above 18pt) WCAG AAA ✓ Pass

Any Text WCAG AAA ✓ Pass

If you want to check with other color combinations, try the [Color Contrast Checker](#).

Hex DCBFBF Background



This preview shows how black text looks on a background with the Hex color DCBFBF.






This preview shows how white text looks on a background with the Hex color DCBFBF.

Color Blindness Simulation

Color vision deficiency is a very complex topic, and I could not describe the different causes any better than Wikipedia does, so if you want to learn more, you should check out their [article about color blindness](#).

Dichromacy

	Original Color DCBFBF
	Protanopia CAC5C2
	Deuteranopia DBBFBF

Trichromacy



Original Color
DCBFBF

Protanomaly
D1C3C1

Deuteranomaly
DBBFBF

Tritanomaly
DDBEC7

Monochromacy



Original Color
DCBFBF

Achromatopsia
C8C8C8

Achromatomaly
CFC5C5

CSS Examples

Text

The CSS property to change the color of the text to Hex DCBFBF is called "color". The color property can be set on classes, ids or directly on the HTML element.

This example shows how text in the color #DCBFBF looks like.

```
.text, #text, p{  
    color:#DCBFBF  
}
```

If you want to add a text shadow in that color use the text-shadow property, you can generate a text shadow directly with our [CSS Text Shadow Generator](#).

Here you see how black text with a 4 pixel #DCBFBF colored shadow looks like.

```
.shadow{ text-shadow: 4px 4px 2px #DCBFBF
}
```

Border

The CSS property to change the border of an element to Hex DCBFBF is called "border". The border property can be set on classes, ids or directly on the HTML element.

This example shows the color as border, it can be applied via the CSS property "border" or "border-color".

```
.border, #border, table{ border:4px solid
#DCBFBF }
```

If only the border color should be changed use the property `border-color`.

```
.border{ border-color:#DCBFBF }
```

If you want to add a box shadow in that color use:

Here you see how a box with a 4 pixel #DCBFBF colored shadow looks like.

```
.boxshadow{ -moz-box-shadow:4px 4px 4px  
4px #DCBFBF; -webkit-box-shadow:4px 4px  
4px 4px #DCBFBF; box-shadow:4px 4px 4px  
4px #DCBFBF }
```

Background

The CSS property to change the background color of an element to Hex DCBFBF is called "background". The background property can be set on classes, ids or directly on the HTML element.

```
.background, #background, body{  
background:#DCBFBF }
```

If only the background color should be changed can be used:

```
.background{ background-color:#DCBFBF }
```

This example shows the color as background, it is applied via the CSS property "background".

To optimize and compress your CSS code, you can use our [online CSS compressor and optimizer](#) based on csstidy. If you want to create a linear or radial gradient as background or border, check our [CSS Gradient Generator](#).

Hey! You found this booklet interesting? Support Converting Colors with the new Membership Option!

The pro membership hides all ads, plus gives you double the colors in the color bucket, and more awesome pro features!

[Learn more, Memberships starting at \\$2.50/m!](#)

**Follow me
on Twitter!**

@ConvertingColor