

Converting Colors

Hex(DCC3B0)

Have a look what the booklet for
Hex(DCC3B0) contains.

Hex(DCC3B0)	3
<i>Conversions</i>	4
<i>Details</i>	6
<i>Harmonies</i>	11
<i>Previews</i>	23
<i>Color Blindness Simulation</i>	26
<i>CSS Examples</i>	29

Color

Hex(DCC3B0)

Conversions

Conversions Part 1

Format	Color
Hex	DCC3B0
RGB	220, 195, 176
RGB Percent	86%, 76%, 69%
CMY	0.1373, 0.2353, 0.3098
CMYK	0.00, 0.11, 0.20, 0.14
HSL	26°, 39%, 78%
HSV	26°, 20%, 86%
XYZ	56.8668, 57.3804, 49.1526
YIQ	200.3090, 20.9990, -0.6090

Conversions

Conversions Part 2

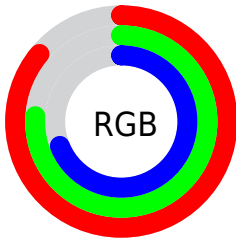
Format	Color
RYB	220, 209, 176
Decimal	14468016
CIELab	80.39, 5.83, 12.77
CIELCh	80, 14.039, 65.462
Yxy	57.3804, 0.3480, 0.3512
Android (android.graphics.Color)	4292658096 (0xFFDCC3B0)
YUV	200.3090, -11.9843, 17.2690
Hunter-Lab	75.7499, 1.4408, 14.5528

Details

The Hex color **DCC3B0** is a light color, and the websafe version is hex **CCCCCC**. A complement of this color would be **B0C9DC**, and the grayscale version is **C8C8C8**.

A 20% lighter version of the original color is **FFCE8**, and **A58D7B** is the 20% darker color. If you saturate the color by 10%, you get **DCB69A**, and if you desaturate by 10%, it is **DCD0C6**.

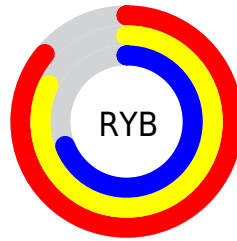
Distribution



Red (86%)

Green (76%)

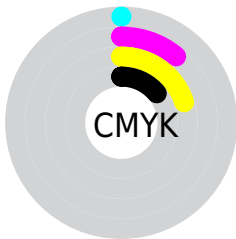
Blue (69%)



Red (86%)

Yellow (82%)

Blue (69%)

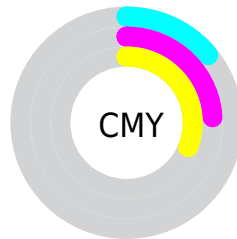


Cyan (0%)

Magenta (11%)

Yellow (20%)

Black (14%)



Cyan (14%)

Magenta (24%)

Yellow (31%)

Brightness & Saturation Gradients

These gradients show how the Hex color DCC3B0 changes by changing the brightness by 10 percent. The first figure shows a shift by +10% for each color and the second figure -10%.

Similar to the brightness gradients but the following saturation gradients show a change of the Hex color DCC3B0 by changing the saturation by 10% instead.

 DCC3B0

 DCC3B0

FFFFFF

 C0A895

 FFFCE8

 A58D7B

 8A7463

 705B4B

 574434

 3F2E1F

 291907

 100000

 000000

 DCC3B0

 DCC3B0

 DCB69A

 DCD0C6

 DCAA84

 DCDCDC

 DC9D6E

 DCE9F2

 DC9158

 DCF5FF

 DC8442

 DCFFFF

 DC782C

 DC6B16

 DC5F00

Harmonies

Analogous

The Analogous color harmony consists of three colors that are next to each other on the color wheel.



E3C0B9



DCC3B0



D0C7AD

Triad

The Triadic color harmony groups three colors that are evenly spaced from another and form a triangle on the color wheel.



DCC3B0



A8CFC9



CDC3DD

Complementary

The Complementary color scheme is a pair of colors which are on the opposite of each other on the color wheel.



DCC3B0



B0C9DC

Split Complementary

Split-complementary colors differ from the complementary color scheme. The scheme consists of three colors, the original color and two neighbors of the complement color.



BCC8E1



DCC3B0



A6CED6

Square

The Square scheme is like the rectangle color scheme, but the four colors are evenly spaced on the color wheel.



DCC3B0



B2CEBC



AECCDF



DBC0D3

Rectangle

The Rectangle color scheme consists of four colors that form a rectangle on the color wheel.



DCC3B0



C6CAB0



AECCDF



C8C5DF

Sweetspot

The Sweet Spot groups the original color and five complimentary colors.



DCC3B0



FFF6F0



DCB0CA



807A77



000000



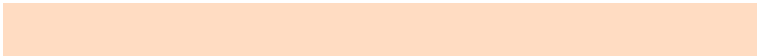
808080

Same Dimension

The Same Dimension uses a secret algorithm to generate beautiful new colors.



DCC3B0



FFDCC2



DCD8B0



6E6763



AD4B00



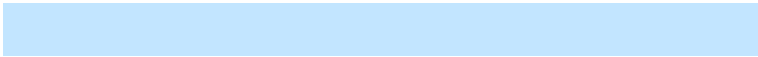
2E1400

Inverse Universe

The Inverse Universe completely reimagines the original color for something new.



B0C9DC



C2E5FF



B0B4DC



63696E



0063AD



001A2E

Previews

White Background



This preview shows how the Hex color DCC3B0 looks on a white background.

Color Contrast Check

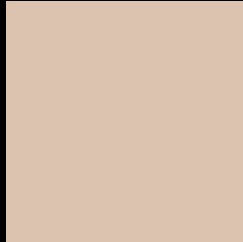
Large Text (above 18pt) WCAG AA × Fail

Any Text WCAG AA × Fail

Large Text (above 18pt) WCAG AAA × Fail

Any Text WCAG AAA × Fail

Black Background



This preview shows how the Hex color DCC3B0 looks on a black background.

Color Contrast Check

Large Text (above 18pt) WCAG AA ✓ Pass

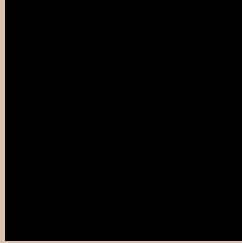
Any Text WCAG AA ✓ Pass

Large Text (above 18pt) WCAG AAA ✓ Pass

Any Text WCAG AAA ✓ Pass

If you want to check with other color combinations, try the [Color Contrast Checker](#).

Hex DCC3B0 Background



This preview shows how black text looks on a background with the Hex color DCC3B0.

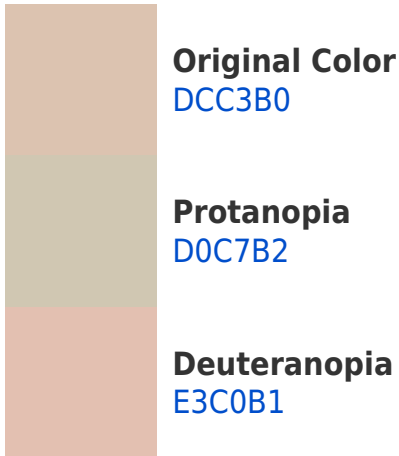


This preview shows how white text looks on a background with the Hex color DCC3B0.

Color Blindness Simulation

Color vision deficiency is a very complex topic, and I could not describe the different causes any better than Wikipedia does, so if you want to learn more, you should check out their [article about color blindness](#).

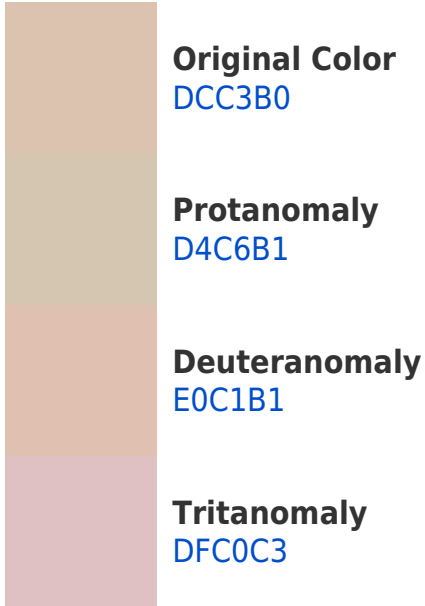
Dichromacy





Tritanopia
E0BFCE

Trichromacy



Monochromacy



CSS Examples

Text

The CSS property to change the color of the text to Hex DCC3B0 is called "color". The color property can be set on classes, ids or directly on the HTML element.

This example shows how text in the color #DCC3B0 looks like.

```
.text, #text, p{  
    color:#DCC3B0  
}
```

If you want to add a text shadow in that color use the text-shadow property, you can generate a text shadow directly with our [CSS Text Shadow Generator](#).

Here you see how black text with a 4 pixel #DCC3B0 colored shadow looks like.

```
.shadow{ text-shadow: 4px 4px 2px #DCC3B0  
}
```

Border

The CSS property to change the border of an element to Hex DCC3B0 is called "border". The border property can be set on classes, ids or directly on the HTML element.

This example shows the color as border, it can be applied via the CSS property "border" or "border-color".

```
.border, #border, table{ border:4px solid  
#DCC3B0 }
```

If only the border color should be changed use the property `border-color`.

```
.border{ border-color:#DCC3B0 }
```

If you want to add a box shadow in that color use:

Here you see how a box with a 4 pixel #DCC3B0 colored shadow looks like.

```
.boxshadow{ -moz-box-shadow:4px 4px 4px  
4px #DCC3B0; -webkit-box-shadow:4px 4px  
4px 4px #DCC3B0; box-shadow:4px 4px 4px  
4px #DCC3B0 }
```

Background

The CSS property to change the background color of an element to Hex DCC3B0 is called "background". The background property can be set on classes, ids or directly on the HTML element.

```
.background, #background, body{  
background:#DCC3B0 }
```

If only the background color should be changed can be used:

```
.background{ background-color:#DCC3B0 }
```

This example shows the color as background, it is applied via the CSS property "background".

To optimize and compress your CSS code, you can use our [online CSS compressor and optimizer](#) based on csstidy. If you want to create a linear or radial gradient as background or border, check our [CSS Gradient Generator](#).

Hey! You found this booklet interesting? Support Converting Colors with the new Membership Option!

The pro membership hides all ads, plus gives you double the colors in the color bucket, and more awesome pro features!

[Learn more, Memberships starting at \\$2.50/m!](#)

**Follow me
on Twitter!**

@ConvertingColor