

Converting Colors

Hex(DCC3CA)

Have a look what the booklet for
Hex(DCC3CA) contains.

| | |
|--|----|
| Hex(DCC3CA) | 3 |
| <i>Conversions</i> | 4 |
| <i>Details</i> | 6 |
| <i>Harmonies</i> | 11 |
| <i>Previews</i> | 23 |
| <i>Color Blindness Simulation</i> | 26 |
| <i>CSS Examples</i> | 29 |

Color

Hex(DCC3CA)

Conversions

Conversions Part 1

| Format | Color |
|---------------|---------------------------|
| Hex | DCC3CA |
| RGB | 220, 195, 202 |
| RGB Percent | 86%, 76%, 79% |
| CMY | 0.1373, 0.2353, 0.2078 |
| CMYK | 0.00, 0.11, 0.08, 0.14 |
| HSL | 343°, 26%, 81% |
| HSV | 343°, 11%, 86% |
| XYZ | 59.6910, 58.5101, 64.0246 |
| YIQ | 203.2730, 12.6530, 7.4770 |

Conversions

Conversions Part 2

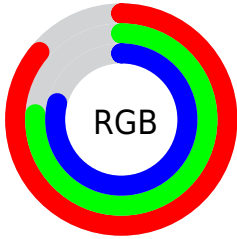
| Format | Color |
|-------------------------------------|-------------------------------|
| R _Y B | 220, 195, 202 |
| Decimal | 14468042 |
| CIE Lab | 81.02, 9.98, -0.28 |
| CIE LCh | 81, 9.988, 358.410 |
| Yxy | 58.5101, 0.3276, 0.3211 |
| Android (android.graphics.Color) | 4292658122 (0xFFDCC3CA) |
| YUV | 203.2730, -0.6276, 14.6696 |
| Hunter-Lab | 76.4919, 5.4328, 3.9179 |

Details

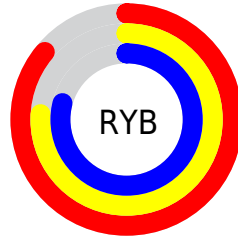
The Hex color **DCC3CA** is a light color, and the websafe version is hex **CCCCCC**. A complement of this color would be **C3DCD5**, and the grayscale version is **CBCBCB**.

A 20% lighter version of the original color is **FFFCFF**, and **A58D94** is the 20% darker color. If you saturate the color by 10%, you get **DCADBA**, and if you desaturate by 10%, it is **DCD9DA**.

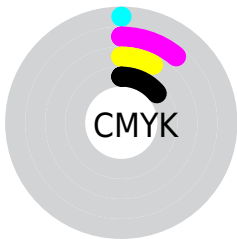
Distribution



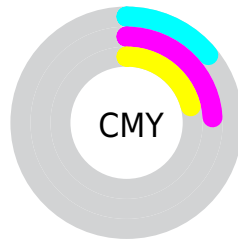
- Red (86%)
- Green (76%)
- Blue (79%)



- Red (86%)
- Yellow (76%)
- Blue (79%)



- Cyan (0%)
- Magenta (11%)
- Yellow (8%)
- Black (14%)



- Cyan (14%)
- Magenta (24%)
- Yellow (21%)

Brightness & Saturation Gradients

These gradients show how the Hex color DCC3CA changes by changing the brightness by 10 percent. The first figure shows a shift by +10% for each color and the second figure -10%.

Similar to the brightness gradients but the following saturation gradients show a change of the Hex color DCC3CA by changing the saturation by 10% instead.

 DCC3CA

FFFFFF


 FFFCFF

 DCC3CA

 C0A8AF

 A58D94

 8A747A

 715B61

 58444A

 412D33

 2A181E

 180005

 000000

 DCC3CA

 DCC3CA

 DCADBA

 DCD9DA

 DC97AA

 DCEFEA

 DC819A

 DCFFFA

 DC6B8B

 DCFFFF

 DC557B

 DC3F6B

 DC295B

 DC134B

 DC003E

Harmonies

Analogous

The Analogous color harmony consists of three colors that are next to each other on the color wheel.



D5C4D3



DCC3CA



DEC3C1

Triad

The Triadic color harmony groups three colors that are evenly spaced from another and form a triangle on the color wheel.



DCC3CA



C7CBB9



B6CDD9

Complementary

The Complementary color scheme is a pair of colors which are on the opposite of each other on the color wheel.



DCC3CA



C3DCD5

Split Complementary

Split-complementary colors differ from the complementary color scheme. The scheme consists of three colors, the original color and two neighbors of the complement color.



B2CFD2



DCC3CA



BDCEBF

Square

The Square scheme is like the rectangle color scheme, but the four colors are evenly spaced on the color wheel.



DCC3CA



D2C8B7



B5CFC8



BFCADC

Rectangle

The Rectangle color scheme consists of four colors that form a rectangle on the color wheel.



DCC3CA



DCC5BC



B5CFC8



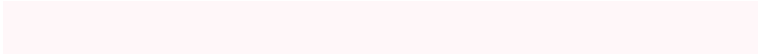
B4CED7

Sweetspot

The Sweet Spot groups the original color and five complimentary colors.



DCC3CA



FFF7F9



D5C3DC



807A7C



000000



808080

Same Dimension

The Same Dimension uses a secret algorithm to generate beautiful new colors.



DCC3CA



FFDBE5



DCC8C3



6E6366



AD0031



2E000D

Inverse Universe

The Inverse Universe completely reimagines the original color for something new.



DCC3CA



FFDBE5



C3D7DC



6E6366



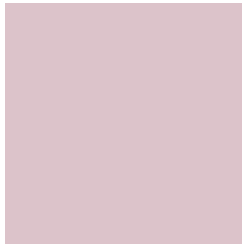
AD0031



2E000D

Previews

White Background



This preview shows how the Hex color DCC3CA looks on a white background.

Color Contrast Check

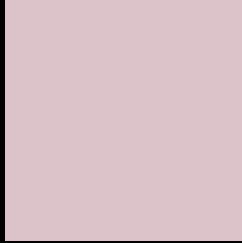
Large Text (above 18pt) WCAG AA × Fail

Any Text WCAG AA × Fail

Large Text (above 18pt) WCAG AAA × Fail

Any Text WCAG AAA × Fail

Black Background



This preview shows how the Hex color DCC3CA looks on a black background.

Color Contrast Check

Large Text (above 18pt) WCAG AA ✓ Pass

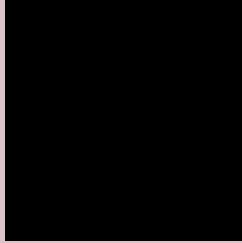
Any Text WCAG AA ✓ Pass

Large Text (above 18pt) WCAG AAA ✓ Pass

Any Text WCAG AAA ✓ Pass

If you want to check with other color combinations, try the [Color Contrast Checker](#).

Hex DCC3CA Background



This preview shows how black text looks on a background with the Hex color DCC3CA.

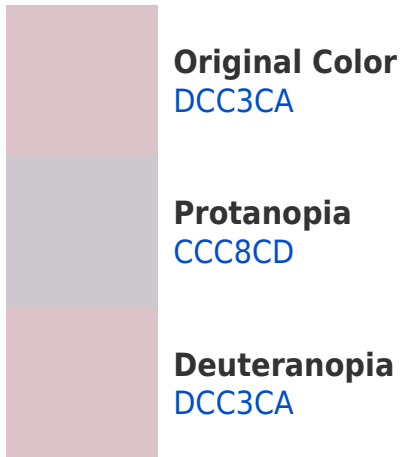


This preview shows how white text looks on a background with the Hex color DCC3CA.

Color Blindness Simulation

Color vision deficiency is a very complex topic, and I could not describe the different causes any better than Wikipedia does, so if you want to learn more, you should check out their [article about color blindness](#).

Dichromacy





Tritanopia
DDC2D1

Trichromacy



Original Color
DCC3CA

Protanomaly
D2C6CC

Deuteranomaly
DCC3CA

Tritanomaly
DDC2CE

Monochromacy



Original Color
DCC3CA

Achromatopsia
CBCBCB

Achromatomaly
D1C8CB

CSS Examples

Text

The CSS property to change the color of the text to Hex DCC3CA is called "color". The color property can be set on classes, ids or directly on the HTML element.

This example shows how text in the color #DCC3CA looks like.

```
.text, #text, p{  
    color:#DCC3CA  
}
```

If you want to add a text shadow in that color use the text-shadow property, you can generate a text shadow directly with our [CSS Text Shadow Generator](#).

Here you see how black text with a 4 pixel #DCC3CA colored shadow looks like.

```
.shadow{ text-shadow: 4px 4px 2px #DCC3CA
}
```

Border

The CSS property to change the border of an element to Hex DCC3CA is called "border". The border property can be set on classes, ids or directly on the HTML element.

This example shows the color as border, it can be applied via the CSS property "border" or "border-color".

```
.border, #border, table{ border:4px solid
#DCC3CA }
```

If only the border color should be changed use the property `border-color`.

```
.border{ border-color:#DCC3CA }
```

If you want to add a box shadow in that color use:

Here you see how a box with a 4 pixel #DCC3CA colored shadow looks like.

```
.boxshadow{ -moz-box-shadow:4px 4px 4px  
4px #DCC3CA; -webkit-box-shadow:4px 4px  
4px 4px #DCC3CA; box-shadow:4px 4px 4px  
4px #DCC3CA }
```

Background

The CSS property to change the background color of an element to Hex DCC3CA is called "background". The background property can be set on classes, ids or directly on the HTML element.

```
.background, #background, body{  
background:#DCC3CA }
```

If only the background color should be changed can be used:

```
.background{ background-color:#DCC3CA }
```

This example shows the color as background, it is applied via the CSS property "background".

To optimize and compress your CSS code, you can use our [online CSS compressor and optimizer](#) based on csstidy. If you want to create a linear or radial gradient as background or border, check our [CSS Gradient Generator](#).

Hey! You found this booklet interesting? Support Converting Colors with the new Membership Option!

The pro membership hides all ads, plus gives you double the colors in the color bucket, and more awesome pro features!

[Learn more, Memberships starting at \\$2.50/m!](#)

**Follow me
on Twitter!**

@ConvertingColor