

Converting Colors

Hex(DCC4C1)

Have a look what the booklet for
Hex(DCC4C1) contains.

Hex(DCC4C1)	3
<i>Conversions</i>	4
<i>Details</i>	6
<i>Harmonies</i>	11
<i>Previews</i>	23
<i>Color Blindness Simulation</i>	26
<i>CSS Examples</i>	29

Color

Hex(DCC4C1)

Conversions

Conversions Part 1

Format	Color
Hex	DCC4C1
RGB	220, 196, 193
RGB Percent	86%, 77%, 76%
CMY	0.1373, 0.2314, 0.2431
CMYK	0.00, 0.11, 0.12, 0.14
HSL	7°, 28%, 81%
HSV	7°, 12%, 86%
XYZ	58.8808, 58.5458, 58.6492
YIQ	202.8340, 15.2670, 4.1550

Conversions

Conversions Part 2

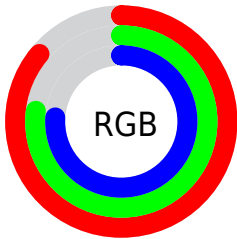
Format	Color
R_{YB}	220, 196, 193
Decimal	14468289
CIE Lab	81.04, 7.95, 4.58
CIE LCh	81, 9.179, 29.958
Yxy	58.5458, 0.3344, 0.3325
Android (android.graphics.Color)	4292658369 (0xFFDCC4C1)
YUV	202.8340, -4.8482, 15.0546
Hunter-Lab	76.5152, 3.4596, 8.1146

Details

The Hex color **DCC4C1** is a light color, and the websafe version is hex **CCCCCC**. A complement of this color would be **C1D9DC**, and the grayscale version is **CBCBCB**.

A 20% lighter version of the original color is **FFFDF9**, and **A58E8C** is the 20% darker color. If you saturate the color by 10%, you get **DCB0AB**, and if you desaturate by 10%, it is **DCD8D7**.

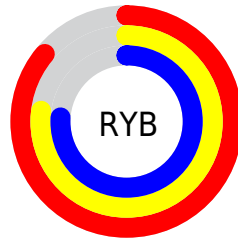
Distribution



Red (86%)

Green (77%)

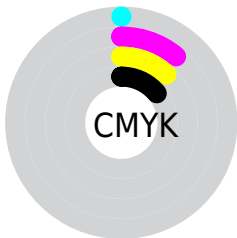
Blue (76%)



Red (86%)

Yellow (77%)

Blue (76%)

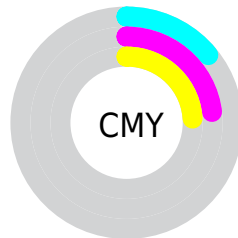


Cyan (0%)

Magenta (11%)

Yellow (12%)

Black (14%)



Cyan (14%)

Magenta (23%)

Yellow (24%)

Brightness & Saturation Gradients

These gradients show how the Hex color DCC4C1 changes by changing the brightness by 10 percent. The first figure shows a shift by +10% for each color and the second figure -10%.

Similar to the brightness gradients but the following saturation gradients show a change of the Hex color DCC4C1 by changing the saturation by 10% instead.

 DCC4C1

FFFFFF


 FFFDF9

 DCC4C1

 C0A9A6

 A58E8C

 8A7572

 715C5A

 584542

 402E2C

 2A1918

 160000

 000000

 DCC4C1

 DCC4C1

 DCB0AB

 DCD8D7

 DC9D95

 DCEBED

 DC897F

 DCFFFF

 DC7669

 DC6253

 DC4F3D

 DC3B27

 DC2811

 DC1800

Harmonies

Analogous

The Analogous color harmony consists of three colors that are next to each other on the color wheel.



DBC4CA



DCC4C1



D8C6BB

Triad

The Triadic color harmony groups three colors that are evenly spaced from another and form a triangle on the color wheel.



DCC4C1



BDCDC0



C0CADA

Complementary

The Complementary color scheme is a pair of colors which are on the opposite of each other on the color wheel.



DCC4C1



C1D9DC

Split Complementary

Split-complementary colors differ from the complementary color scheme. The scheme consists of three colors, the original color and two neighbors of the complement color.



B8CCD8



DCC4C1



B6CEC9

Square

The Square scheme is like the rectangle color scheme, but the four colors are evenly spaced on the color wheel.



DCC4C1



C7CBBA



B4CED1



CBC7D8

Rectangle

The Rectangle color scheme consists of four colors that form a rectangle on the color wheel.



DCC4C1



D4C8B9



B4CED1



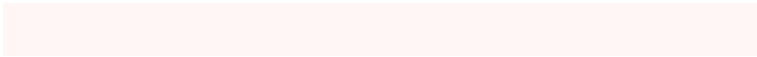
BDCBDA

Sweetspot

The Sweet Spot groups the original color and five complimentary colors.



DCC4C1



FFF6F5



DCC1D9



807A79



000000



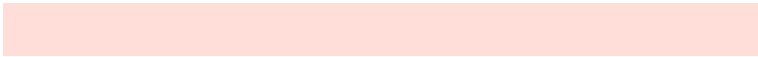
808080

Same Dimension

The Same Dimension uses a secret algorithm to generate beautiful new colors.



DCC4C1



FFDDD9



DCD1C1



6E6463



AD1300



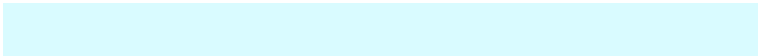
2E0500

Inverse Universe

The Inverse Universe completely reimagines the original color for something new.



C1D9DC



D9FBFF



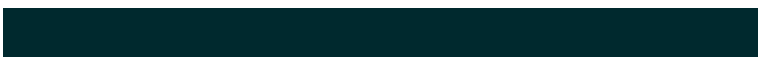
C1CCDC



636C6E



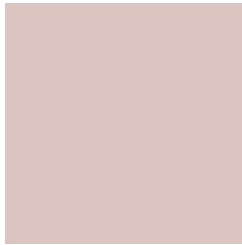
009AAD



00292E

Previews

White Background



This preview shows how the Hex color DCC4C1 looks on a white background.

Color Contrast Check

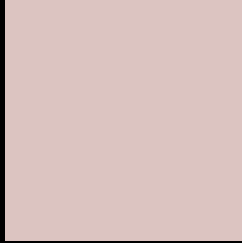
Large Text (above 18pt) WCAG AA × Fail

Any Text WCAG AA × Fail

Large Text (above 18pt) WCAG AAA × Fail

Any Text WCAG AAA × Fail

Black Background



This preview shows how the Hex color DCC4C1 looks on a black background.

Color Contrast Check

Large Text (above 18pt) WCAG AA ✓ Pass

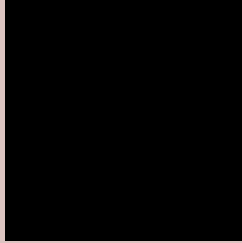
Any Text WCAG AA ✓ Pass

Large Text (above 18pt) WCAG AAA ✓ Pass

Any Text WCAG AAA ✓ Pass

If you want to check with other color combinations, try the [Color Contrast Checker](#).

Hex DCC4C1 Background



This preview shows how black text looks on a background with the Hex color DCC4C1.

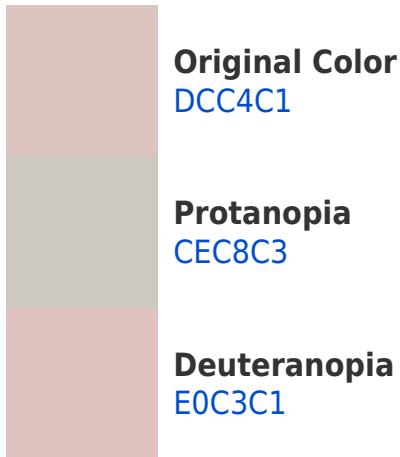


This preview shows how white text looks on a background with the Hex color DCC4C1.

Color Blindness Simulation

Color vision deficiency is a very complex topic, and I could not describe the different causes any better than Wikipedia does, so if you want to learn more, you should check out their [article about color blindness](#).

Dichromacy





Tritanopia
DEC2D1

Trichromacy



Original Color
DCC4C1

Protanomaly
D3C7C2

Deuteranomaly
DFC3C1

Tritanomaly
DDC3CB

Monochromacy



Original Color
DCC4C1

Achromatopsia
CBCBCB

Achromatomaly
D1C8C7

CSS Examples

Text

The CSS property to change the color of the text to Hex DCC4C1 is called "color". The color property can be set on classes, ids or directly on the HTML element.

This example shows how text in the color #DCC4C1 looks like.

```
.text, #text, p{  
    color:#DCC4C1  
}
```

If you want to add a text shadow in that color use the text-shadow property, you can generate a text shadow directly with our [CSS Text Shadow Generator](#).

Here you see how black text with a 4 pixel #DCC4C1 colored shadow looks like.

```
.shadow{ text-shadow: 4px 4px 2px #DCC4C1
}
```

Border

The CSS property to change the border of an element to Hex DCC4C1 is called "border". The border property can be set on classes, ids or directly on the HTML element.

This example shows the color as border, it can be applied via the CSS property "border" or "border-color".

```
.border, #border, table{ border:4px solid
#DCC4C1 }
```

If only the border color should be changed use the property `border-color`.

```
.border{ border-color:#DCC4C1 }
```

If you want to add a box shadow in that color use:

Here you see how a box with a 4 pixel #DCC4C1 colored shadow looks like.

```
.boxshadow{ -moz-box-shadow:4px 4px 4px  
4px #DCC4C1; -webkit-box-shadow:4px 4px  
4px 4px #DCC4C1; box-shadow:4px 4px 4px  
4px #DCC4C1 }
```

Background

The CSS property to change the background color of an element to Hex DCC4C1 is called "background". The background property can be set on classes, ids or directly on the HTML element.

```
.background, #background, body{  
background:#DCC4C1 }
```

If only the background color should be changed can be used:

```
.background{ background-color:#DCC4C1 }
```

This example shows the color as background, it is applied via the CSS property "background".

To optimize and compress your CSS code, you can use our [online CSS compressor and optimizer](#) based on csstidy. If you want to create a linear or radial gradient as background or border, check our [CSS Gradient Generator](#).

Hey! You found this booklet interesting? Support Converting Colors with the new Membership Option!

The pro membership hides all ads, plus gives you double the colors in the color bucket, and more awesome pro features!

[Learn more, Memberships starting at \\$2.50/m!](#)

**Follow me
on Twitter!**

@ConvertingColor