

Converting Colors

Hex(DCC6BF)

Have a look what the booklet for
Hex(DCC6BF) contains.

Hex(DCC6BF)	3
<i>Conversions</i>	4
<i>Details</i>	6
<i>Harmonies</i>	11
<i>Previews</i>	23
<i>Color Blindness Simulation</i>	26
<i>CSS Examples</i>	29

Color

Hex(DCC6BF)

Conversions

Conversions Part 1

Format	Color
Hex	DCC6BF
RGB	220, 198, 191
RGB Percent	86%, 78%, 75%
CMY	0.1373, 0.2235, 0.2510
CMYK	0.00, 0.10, 0.13, 0.14
HSL	14°, 29%, 81%
HSV	14°, 13%, 86%
XYZ	59.1133, 59.3654, 57.6333
YIQ	203.7800, 15.3590, 2.4870

Conversions

Conversions Part 2

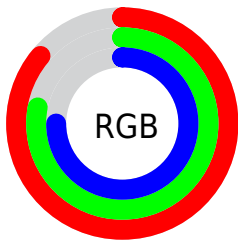
Format	Color
RYP	220, 200, 191
Decimal	14468799
CIELab	81.49, 6.57, 6.31
CIElCh	81, 9.107, 43.825
Yxy	59.3654, 0.3357, 0.3371
Android (android.graphics.Color)	4292658879 (0xFFDCC6BF)
YUV	203.7800, -6.3005, 14.2249
Hunter-Lab	77.0489, 2.1126, 9.5848

Details

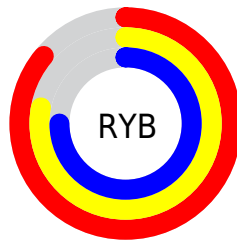
The Hex color **DCC6BF** is a light color, and the websafe version is hex **CCCCCC**. A complement of this color would be **BFD5DC**, and the grayscale version is **CCCCCC**.

A 20% lighter version of the original color is **FFFFFF7**, and **A5908A** is the 20% darker color. If you saturate the color by 10%, you get **DCB5A9**, and if you desaturate by 10%, it is **DCD7D5**.

Distribution



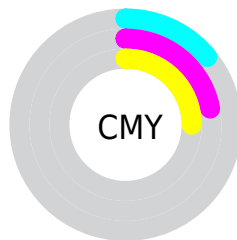
- Red (86%)
- Green (78%)
- Blue (75%)



- Red (86%)
- Yellow (78%)
- Blue (75%)



- Cyan (0%)
- Magenta (10%)
- Yellow (13%)
- Black (14%)



- Cyan (14%)
- Magenta (22%)
- Yellow (25%)

Brightness & Saturation Gradients

These gradients show how the Hex color DCC6BF changes by changing the brightness by 10 percent. The first figure shows a shift by +10% for each color and the second figure -10%.

Similar to the brightness gradients but the following saturation gradients show a change of the Hex color DCC6BF by changing the saturation by 10% instead.

 DCC6BF

FFFFFFF


 FFFFFF7

 DCC6BF

 C0ABA4

 A5908A

 8A7770

 715E58

 584641

 40302B

 2A1B16

 150000

 000000

 DCC6BF

 DCC6BF

 DCB5A9

 DCD7D5

 DCA593

 DCE7EB

 DC947D

 DCF8FF

 DC8367

 DCF8FF

 DC7351

 DC623B

 DC5125

 DC400F

 DC3500

Harmonies

Analogous

The Analogous color harmony consists of three colors that are next to each other on the color wheel.



DDC5C7



DCC6BF



D6C8BA

Triad

The Triadic color harmony groups three colors that are evenly spaced from another and form a triangle on the color wheel.



DCC6BF



BBCFC5



C7CADB

Complementary

The Complementary color scheme is a pair of colors which are on the opposite of each other on the color wheel.



DCC6BF



BFD5DC

Split Complementary

Split-complementary colors differ from the complementary color scheme. The scheme consists of three colors, the original color and two neighbors of the complement color.



BDCDDB



DCC6BF



B6D0CE

Square

The Square scheme is like the rectangle color scheme, but the four colors are evenly spaced on the color wheel.



DCC6BF



C4CEBE



B7CFD6



D1C7D7

Rectangle

The Rectangle color scheme consists of four colors that form a rectangle on the color wheel.



DCC6BF



D1CABA



B7CFD6



C3CBDB

Sweetspot

The Sweet Spot groups the original color and five complimentary colors.



DCC6BF



FFF7F5



DCBFD5



807B79



000000



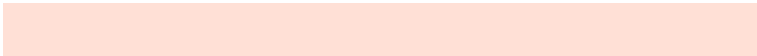
808080

Same Dimension

The Same Dimension uses a secret algorithm to generate beautiful new colors.



DCC6BF



FFE0D6



DCD4BF



6E6563



AD2A00



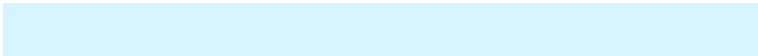
2E0B00

Inverse Universe

The Inverse Universe completely reimagines the original color for something new.



BFD5DC



D6F5FF



BFC7DC



636B6E



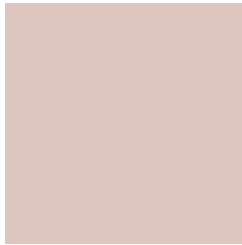
0084AD



00232E

Previews

White Background



This preview shows how the Hex color DCC6BF looks on a white background.

Color Contrast Check

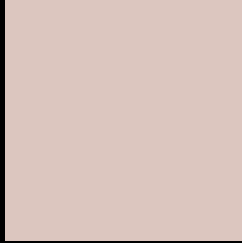
Large Text (above 18pt) WCAG AA × Fail

Any Text WCAG AA × Fail

Large Text (above 18pt) WCAG AAA × Fail

Any Text WCAG AAA × Fail

Black Background



This preview shows how the Hex color DCC6BF looks on a black background.

Color Contrast Check

Large Text (above 18pt) WCAG AA ✓ Pass

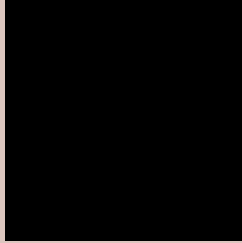
Any Text WCAG AA ✓ Pass

Large Text (above 18pt) WCAG AAA ✓ Pass

Any Text WCAG AAA ✓ Pass

If you want to check with other color combinations, try the [Color Contrast Checker](#).

Hex DCC6BF Background



This preview shows how black text looks on a background with the Hex color DCC6BF.

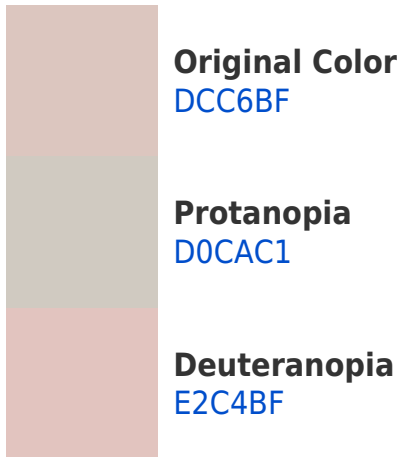


This preview shows how white text looks on a background with the Hex color DCC6BF.

Color Blindness Simulation

Color vision deficiency is a very complex topic, and I could not describe the different causes any better than Wikipedia does, so if you want to learn more, you should check out their [article about color blindness](#).

Dichromacy



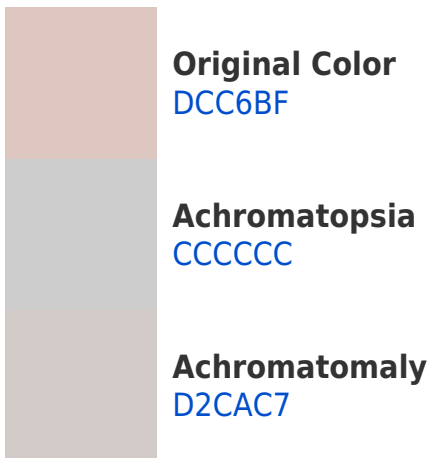


Tritanopia
DFC3D2

Trichromacy



Monochromacy



CSS Examples

Text

The CSS property to change the color of the text to Hex DCC6BF is called "color". The color property can be set on classes, ids or directly on the HTML element.

This example shows how text in the color #DCC6BF looks like.

```
.text, #text, p{  
    color:#DCC6BF  
}
```

If you want to add a text shadow in that color use the text-shadow property, you can generate a text shadow directly with our [CSS Text Shadow Generator](#).

Here you see how black text with a 4 pixel #DCC6BF colored shadow looks like.

```
.shadow{ text-shadow: 4px 4px 2px #DCC6BF
}
```

Border

The CSS property to change the border of an element to Hex DCC6BF is called "border". The border property can be set on classes, ids or directly on the HTML element.

This example shows the color as border, it can be applied via the CSS property "border" or "border-color".

```
.border, #border, table{ border:4px solid
#DCC6BF }
```

If only the border color should be changed use the property `border-color`.

```
.border{ border-color:#DCC6BF }
```

If you want to add a box shadow in that color use:

Here you see how a box with a 4 pixel #DCC6BF colored shadow looks like.

```
.boxshadow{ -moz-box-shadow:4px 4px 4px  
4px #DCC6BF; -webkit-box-shadow:4px 4px  
4px 4px #DCC6BF; box-shadow:4px 4px 4px  
4px #DCC6BF }
```

Background

The CSS property to change the background color of an element to Hex DCC6BF is called "background". The background property can be set on classes, ids or directly on the HTML element.

```
.background, #background, body{  
background:#DCC6BF }
```

If only the background color should be changed can be used:

```
.background{ background-color:#DCC6BF }
```

This example shows the color as background, it is applied via the CSS property "background".

To optimize and compress your CSS code, you can use our [online CSS compressor and optimizer](#) based on csstidy. If you want to create a linear or radial gradient as background or border, check our [CSS Gradient Generator](#).

Hey! You found this booklet interesting? Support Converting Colors with the new Membership Option!

The pro membership hides all ads, plus gives you double the colors in the color bucket, and more awesome pro features!

[Learn more, Memberships starting at \\$2.50/m!](#)

**Follow me
on Twitter!**

@ConvertingColor