

Converting Colors

Hex(DCC6C6)

Have a look what the booklet for
Hex(DCC6C6) contains.

Hex(DCC6C6)	3
<i>Conversions</i>	4
<i>Details</i>	6
<i>Harmonies</i>	11
<i>Previews</i>	23
<i>Color Blindness Simulation</i>	26
<i>CSS Examples</i>	29

Color

Hex(DCC6C6)

Conversions

Conversions Part 1

Format	Color
Hex	DCC6C6
RGB	220, 198, 198
RGB Percent	86%, 78%, 78%
CMY	0.1373, 0.2235, 0.2235
CMYK	0.00, 0.10, 0.10, 0.14
HSL	0°, 24%, 82%
HSV	0°, 10%, 86%
XYZ	59.9023, 59.6810, 61.7885
YIQ	204.5780, 13.1120, 4.6640

Conversions

Conversions Part 2

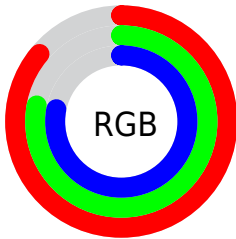
Format	Color
R _Y B	220, 198, 198
Decimal	14468806
CIE Lab	81.66, 7.72, 2.81
CIE LCh	82, 8.212, 19.976
Yxy	59.6810, 0.3303, 0.3291
Android (android.graphics.Color)	4292658886 (0xFFDCC6C6)
YUV	204.5780, -3.2430, 13.5251
Hunter-Lab	77.2535, 3.2152, 6.6564

Details

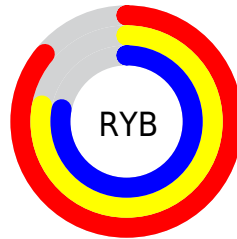
The Hex color **DCC6C6** is a light color, and the websafe version is hex **CCCCCC**. A complement of this color would be **C6DCDC**, and the grayscale version is **CDCDCD**.

A 20% lighter version of the original color is **FFFFFF**, and **A59090** is the 20% darker color. If you saturate the color by 10%, you get **DCB0B0**, and if you desaturate by 10%, it is **DCDCDC**.

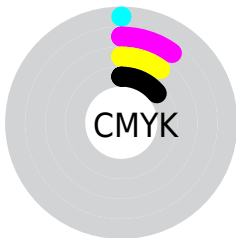
Distribution



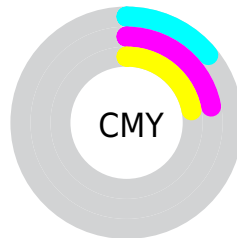
- Red (86%)
- Green (78%)
- Blue (78%)



- Red (86%)
- Yellow (78%)
- Blue (78%)



- Cyan (0%)
- Magenta (10%)
- Yellow (10%)
- Black (14%)



- Cyan (14%)
- Magenta (22%)
- Yellow (22%)

Brightness & Saturation Gradients

These gradients show how the Hex color DCC6C6 changes by changing the brightness by 10 percent. The first figure shows a shift by +10% for each color and the second figure -10%.

Similar to the brightness gradients but the following saturation gradients show a change of the Hex color DCC6C6 by changing the saturation by 10% instead.

 DCC6C6

FFFFFF

 DCC6C6

 C0ABAB

 A59090

 8A7777

 715E5E

 584646

 413030

 2A1B1B

 180000

 000000

 DCC6C6

 DCC6C6

 DCB0B0

 DCDCDC

 DC9A9A

 DCF2F2

 DC8484

 DCFFFF

 DC6E6E

 DC5858

 DC4242

 DC2C2C

 DC1616

 DC0000

Harmonies

Analogous

The Analogous color harmony consists of three colors that are next to each other on the color wheel.



D9C6CE



DCC6C6



DAC7BF

Triad

The Triadic color harmony groups three colors that are evenly spaced from another and form a triangle on the color wheel.



DCC6C6



C3CEC1



C0CCDA

Complementary

The Complementary color scheme is a pair of colors which are on the opposite of each other on the color wheel.



DCC6C6



C6DCDC

Split Complementary

Split-complementary colors differ from the complementary color scheme. The scheme consists of three colors, the original color and two neighbors of the complement color.



BACED6



DCC6C6



BCCFC8

Square

The Square scheme is like the rectangle color scheme, but the four colors are evenly spaced on the color wheel.



DCC6C6



CCCCBD



B8D0D0



C9CAD9

Rectangle

The Rectangle color scheme consists of four colors that form a rectangle on the color wheel.



DCC6C6



D7C9BD



B8D0D0



BECDD9

Sweetspot

The Sweet Spot groups the original color and five complimentary colors.



DCC6C6



FFF7F7



DCC6DC



807A7A



000000



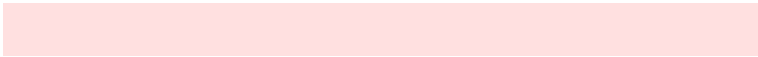
808080

Same Dimension

The Same Dimension uses a secret algorithm to generate beautiful new colors.



DCC6C6



FFE0E0



DCD1C6



6E6363



AD0000



2E0000

Inverse Universe

The Inverse Universe completely reimagines the original color for something new.



C6DCDC



E0FFFF



C6D1DC



636E6E



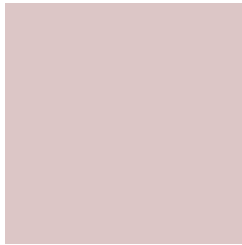
00ADAD



002E2E

Previews

White Background



This preview shows how the Hex color DCC6C6 looks on a white background.

Color Contrast Check

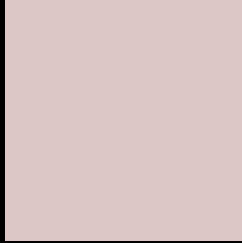
Large Text (above 18pt) WCAG AA × Fail

Any Text WCAG AA × Fail

Large Text (above 18pt) WCAG AAA × Fail

Any Text WCAG AAA × Fail

Black Background



This preview shows how the Hex color DCC6C6 looks on a black background.

Color Contrast Check

Large Text (above 18pt) WCAG AA ✓ Pass

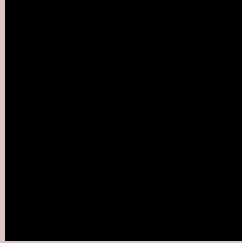
Any Text WCAG AA ✓ Pass

Large Text (above 18pt) WCAG AAA ✓ Pass

Any Text WCAG AAA ✓ Pass

If you want to check with other color combinations, try the [Color Contrast Checker](#).

Hex DCC6C6 Background



This preview shows how black text looks on a background with the Hex color DCC6C6.



This preview shows how white text looks on a background with the Hex color DCC6C6.

Color Blindness Simulation

Color vision deficiency is a very complex topic, and I could not describe the different causes any better than Wikipedia does, so if you want to learn more, you should check out their [article about color blindness](#).

Dichromacy



Original Color
DCC6C6

Protanopia
CFCAC8

Deuteranopia
E0C4C6



Tritanopia
DEC4D3

Trichromacy



Original Color
DCC6C6

Protanomaly
D4C9C7

Deuteranomaly
DFC5C6

Tritanomaly
DDC5CE

Monochromacy



Original Color
DCC6C6

Achromatopsia
CDCDCD

Achromatomaly
D2CACA

CSS Examples

Text

The CSS property to change the color of the text to Hex DCC6C6 is called "color". The color property can be set on classes, ids or directly on the HTML element.

This example shows how text in the color #DCC6C6 looks like.

```
.text, #text, p{  
    color:#DCC6C6  
}
```

If you want to add a text shadow in that color use the text-shadow property, you can generate a text shadow directly with our [CSS Text Shadow Generator](#).

Here you see how black text with a 4 pixel #DCC6C6 colored shadow looks like.

```
.shadow{ text-shadow: 4px 4px 2px #DCC6C6
}
```

Border

The CSS property to change the border of an element to Hex DCC6C6 is called "border". The border property can be set on classes, ids or directly on the HTML element.

This example shows the color as border, it can be applied via the CSS property "border" or "border-color".

```
.border, #border, table{ border:4px solid
#DCC6C6 }
```

If only the border color should be changed use the property `border-color`.

```
.border{ border-color:#DCC6C6 }
```

If you want to add a box shadow in that color use:

Here you see how a box with a 4 pixel #DCC6C6 colored shadow looks like.

```
.boxshadow{ -moz-box-shadow:4px 4px 4px  
4px #DCC6C6; -webkit-box-shadow:4px 4px  
4px 4px #DCC6C6; box-shadow:4px 4px 4px  
4px #DCC6C6 }
```

Background

The CSS property to change the background color of an element to Hex DCC6C6 is called "background". The background property can be set on classes, ids or directly on the HTML element.

```
.background, #background, body{  
background:#DCC6C6 }
```

If only the background color should be changed can be used:

```
.background{ background-color:#DCC6C6 }
```

This example shows the color as background, it is applied via the CSS property "background".

To optimize and compress your CSS code, you can use our [online CSS compressor and optimizer](#) based on csstidy. If you want to create a linear or radial gradient as background or border, check our [CSS Gradient Generator](#).

Hey! You found this booklet interesting? Support Converting Colors with the new Membership Option!

The pro membership hides all ads, plus gives you double the colors in the color bucket, and more awesome pro features!

[Learn more, Memberships starting at \\$2.50/m!](#)

**Follow me
on Twitter!**

@ConvertingColor