

# Converting Colors

Hex(DCC753)

Have a look what the booklet for  
Hex(DCC753) contains.

<b>Hex(DCC753)</b> .....	3
<i><b>Conversions</b></i> .....	4
<i><b>Details</b></i> .....	6
<i><b>Harmonies</b></i> .....	11
<i><b>Previews</b></i> .....	23
<i><b>Color Blindness Simulation</b></i> .....	26
<i><b>CSS Examples</b></i> .....	29

**Color**

**Hex(DCC753)**

# Conversions

## Conversions Part 1

Format	Color
Hex	DCC753
RGB	220, 199, 83
RGB Percent	86%, 78%, 33%
CMY	0.1373, 0.2196, 0.6745
CMYK	0.00, 0.10, 0.62, 0.14
HSL	51°, 66%, 59%
HSV	51°, 62%, 86%
XYZ	51.5000, 56.6870, 16.4110
YIQ	192.0550, 49.7520, -31.6240

# Conversions

## Conversions Part 2

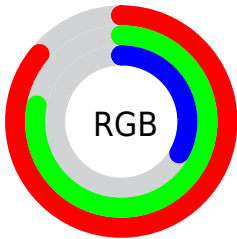
<b>Format</b>	<b>Color</b>
<b>RYB</b>	108, 220, 83
Decimal	14468947
CIELab	80.00, -6.18, 59.09
CIELCh	80, 59.410, 95.974
Yxy	56.6870, 0.4133, 0.4550
Android (android.graphics.Color)	4292659027 (0xFFDCC753)
YUV	192.0550, -53.7641, 24.5078
Hunter-Lab	75.2908, -9.6624, 39.7802

# Details

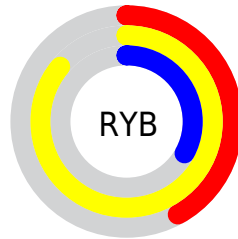
The Hex color **DCC753** is a light color, and the websafe version is hex **CCCC66**. The color can be described as light muted yellow. A complement of this color would be **5368DC**, and the grayscale version is **C1C1C1**.

A 20% lighter version of the original color is **FFFF89**, and **A2911A** is the 20% darker color. If you saturate the color by 10%, you get **DCC43D**, and if you desaturate by 10%, it is **DCCA69**.

# Distribution



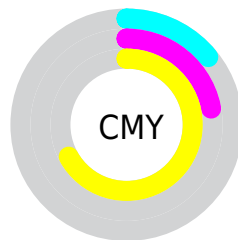
- Red (86%)
- Green (78%)
- Blue (33%)



- Red (42%)
- Yellow (86%)
- Blue (33%)



- Cyan (0%)
- Magenta (10%)
- Yellow (62%)
- Black (14%)



- Cyan (14%)
- Magenta (22%)
- Yellow (67%)

# Brightness & Saturation Gradients

These gradients show how the Hex color DCC753 changes by changing the brightness by 10 percent. The first figure shows a shift by +10% for each color and the second figure -10%.

Similar to the brightness gradients but the following saturation gradients show a change of the Hex color DCC753 by changing the saturation by 10% instead.



 DCC753

 DCC753

FFFFFF

 BFAC38

 FFFF89

 A2911A

 FFFFA4

 867800

 FFFFC1

 6A5F00

 FFFFDD

 4F4800

 FFFFFA

 353200

 1D1D00

 000000

 DCC753

 DCC753

 DCC43D

 DCCA69

 DCC027

 DCCE7F

 DCBD11

 DCD195

 DCBA00

 DCD4AB

 DCD8C1

 DCDBD7

 DCDFED

 DCE2FF

 DCE5FF

# Harmonies

## Analogous

The Analogous color harmony consists of three colors that are next to each other on the color wheel.



FFB360



DCC753



A2D669

# Triad

The Triadic color harmony groups three colors that are evenly spaced from another and form a triangle on the color wheel.



DCC753



00E0FF



FF9FF5

# Complementary

The Complementary color scheme is a pair of colors which are on the opposite of each other on the color wheel.



DCC753



5368DC

# Split Complementary

Split-complementary colors differ from the complementary color scheme. The scheme consists of three colors, the original color and two neighbors of the complement color.



D9B3FF



DCC753



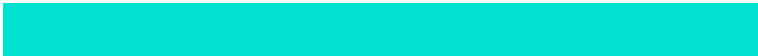
00D8FF

# Square

The Square scheme is like the rectangle color scheme, but the four colors are evenly spaced on the color wheel.



DCC753



00E2D0



77C9FF



FF96BD

# Rectangle

The Rectangle color scheme consists of four colors that form a rectangle on the color wheel.



DCC753



71DD86



77C9FF



FFA5FF



# Sweetspot

The Sweet Spot groups the original color and five complimentary colors.



DCC753



FFF8CF



DC536A



807B62



000000



808080



# Same Dimension

The Same Dimension uses a secret algorithm to generate beautiful new colors.



DCC753



FFE240



AEDC53



6E6C63



AD9300



2E2700



# Inverse Universe

The Inverse Universe completely reimagines the original color for something new.



5368DC



405DFF



8153DC



63646E



001BAD



00072E



# Previews

## White Background



This preview shows how the Hex color DCC753 looks on a white background.

## Color Contrast Check

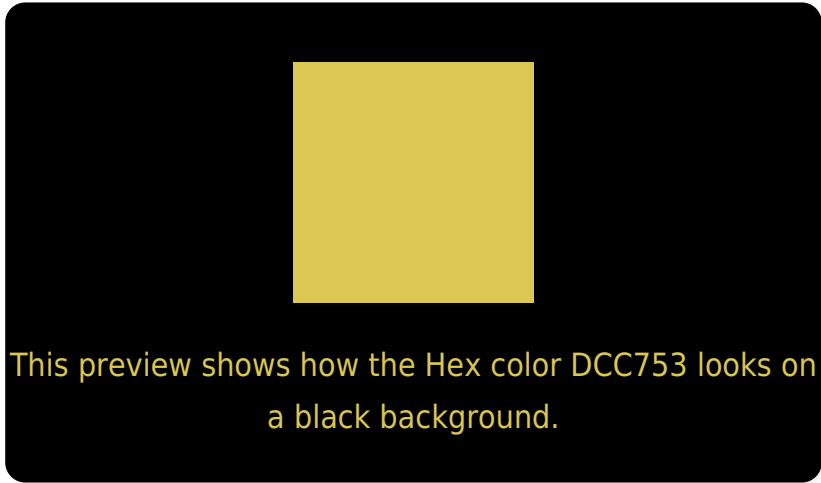
Large Text (above 18pt) WCAG AA × Fail

Any Text WCAG AA × Fail

Large Text (above 18pt) WCAG AAA × Fail

Any Text WCAG AAA × Fail

# Black Background



## Color Contrast Check

Large Text (above 18pt) WCAG AA ✓ Pass

Any Text WCAG AA ✓ Pass

Large Text (above 18pt) WCAG AAA ✓ Pass

Any Text WCAG AAA ✓ Pass

If you want to check with other color combinations, try the [Color Contrast Checker](#).



## Hex DCC753 Background



This preview shows how black text looks on a background with the Hex color DCC753.

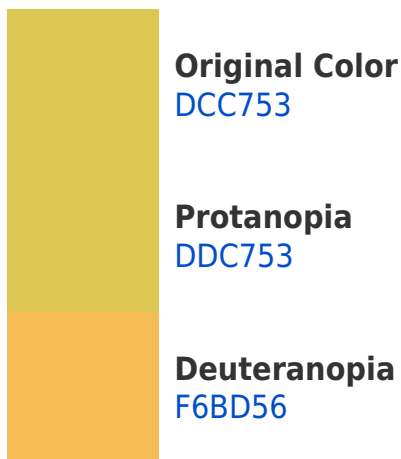


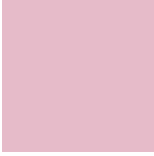
This preview shows how white text looks on a background with the Hex color DCC753.

# Color Blindness Simulation

Color vision deficiency is a very complex topic, and I could not describe the different causes any better than Wikipedia does, so if you want to learn more, you should check out their [article about color blindness](#).

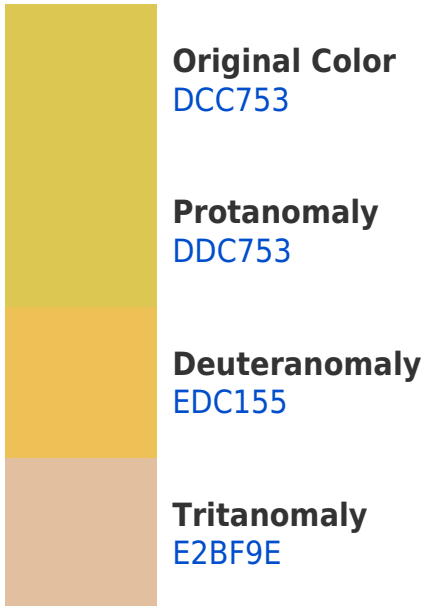
## Dichromacy



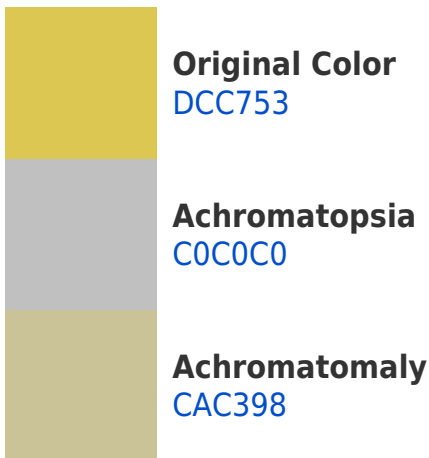


**Tritanopia**  
E6BBC9

# Trichromacy



# Monochromacy



# CSS Examples

## Text

The CSS property to change the color of the text to Hex DCC753 is called "color". The color property can be set on classes, ids or directly on the HTML element.

This example shows how text in the color #DCC753 looks like.

```
.text, #text, p{  
    color:#DCC753  
}
```

If you want to add a text shadow in that color use the text-shadow property, you can generate a text shadow directly with our [CSS Text Shadow Generator](#).

Here you see how black text with a 4 pixel #DCC753 colored shadow looks like.

```
.shadow{ text-shadow: 4px 4px 2px #DCC753
}
```

## Border

The CSS property to change the border of an element to Hex DCC753 is called "border". The border property can be set on classes, ids or directly on the HTML element.

This example shows the color as border, it can be applied via the CSS property "border" or "border-color".

```
.border, #border, table{ border:4px solid
#DCC753 }
```

If only the border color should be changed use the property `border-color`.

```
.border{ border-color:#DCC753 }
```

If you want to add a box shadow in that color use:

Here you see how a box with a 4 pixel #DCC753 colored shadow looks like.

```
.boxshadow{ -moz-box-shadow:4px 4px 4px  
4px #DCC753; -webkit-box-shadow:4px 4px  
4px 4px #DCC753; box-shadow:4px 4px 4px  
4px #DCC753 }
```

# Background

The CSS property to change the background color of an element to Hex DCC753 is called "background". The background property can be set on classes, ids or directly on the HTML element.

```
.background, #background, body{  
background:#DCC753 }
```

If only the background color should be changed can be used:

```
.background{ background-color:#DCC753 }
```

This example shows the color as background, it is applied via the CSS property "background".

To optimize and compress your CSS code, you can use our [online CSS compressor and optimizer](#) based on csstidy. If you want to create a linear or radial gradient as background or border, check our [CSS Gradient Generator](#).



Hey! You found this booklet interesting? Support Converting Colors with the new Membership Option!

The pro membership hides all ads, plus gives you double the colors in the color bucket, and more awesome pro features!

**[Learn more, Memberships starting at \\$2.50/m!](#)**

**Follow me  
on Twitter!**

@ConvertingColor