

Converting Colors

Hex(DCC8C7)

Have a look what the booklet for
Hex(DCC8C7) contains.

Hex(DCC8C7)	3
<i>Conversions</i>	4
<i>Details</i>	6
<i>Harmonies</i>	11
<i>Previews</i>	23
<i>Color Blindness Simulation</i>	26
<i>CSS Examples</i>	29

Color

Hex(DCC8C7)

Conversions

Conversions Part 1

Format	Color
Hex	DCC8C7
RGB	220, 200, 199
RGB Percent	86%, 78%, 78%
CMY	0.1373, 0.2157, 0.2196
CMYK	0.00, 0.09, 0.10, 0.14
HSL	3°, 23%, 82%
HSV	3°, 10%, 86%
XYZ	60.4783, 60.6477, 62.5515
YIQ	205.8660, 12.2410, 3.9290

Conversions

Conversions Part 2

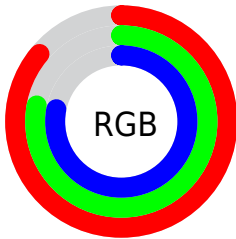
Format	Color
RYB	220, 200, 199
Decimal	14469319
CIELab	82.19, 6.83, 3.03
CIELCh	82, 7.469, 23.941
Yxy	60.6477, 0.3293, 0.3302
Android (android.graphics.Color)	4292659399 (0xFFDCC8C7)
YUV	205.8660, -3.3849, 12.3955
Hunter-Lab	77.8766, 2.3373, 6.8912

Details

The Hex color **DCC8C7** is a light color, and the websafe version is hex **CCCCCC**. A complement of this color would be **C7DBDC**, and the grayscale version is **CECECE**.

A 20% lighter version of the original color is **FFFFFF**, and **A59291** is the 20% darker color. If you saturate the color by 10%, you get **DCB3B1**, and if you desaturate by 10%, it is **DCDDDD**.

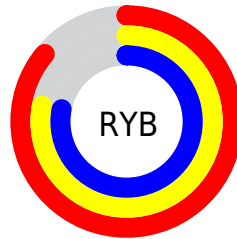
Distribution



Red (86%)

Green (78%)

Blue (78%)



Red (86%)

Yellow (78%)

Blue (78%)

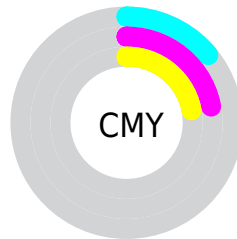


Cyan (0%)

Magenta (9%)

Yellow (10%)

Black (14%)



Cyan (14%)

Magenta (22%)

Yellow (22%)

Brightness & Saturation Gradients

These gradients show how the Hex color DCC8C7 changes by changing the brightness by 10 percent. The first figure shows a shift by +10% for each color and the second figure -10%.

Similar to the brightness gradients but the following saturation gradients show a change of the Hex color DCC8C7 by changing the saturation by 10% instead.

 DCC8C7

FFFFFF

 DCC8C7

 C0ADAC

 A59291

 8A7878

 71605F

 584847

 413131

 2A1C1C

 180201

 000000

 DCC8C7

 DCC8C7

 DCB3B1

 DCDDDD

 DC9E9B

 DCF2F3

 DC8985

 DCFFFF

 DC746F

 DC5F59

 DC4A43

 DC352D

 DC2017

 DC0B01

Harmonies

Analogous

The Analogous color harmony consists of three colors that are next to each other on the color wheel.



DAC8CE



DCC8C7



DAC9C1

Triad

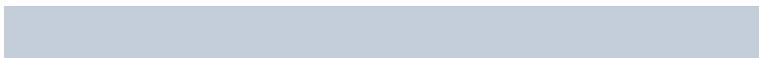
The Triadic color harmony groups three colors that are evenly spaced from another and form a triangle on the color wheel.



DCC8C7



C4D0C4



C4CDDA

Complementary

The Complementary color scheme is a pair of colors which are on the opposite of each other on the color wheel.



DCC8C7



C7DBDC

Split Complementary

Split-complementary colors differ from the complementary color scheme. The scheme consists of three colors, the original color and two neighbors of the complement color.



BECFD7



DCC8C7



BED1CB

Square

The Square scheme is like the rectangle color scheme, but the four colors are evenly spaced on the color wheel.



DCC8C7



CCCEC0



BBD1D2



CCCBD9

Rectangle

The Rectangle color scheme consists of four colors that form a rectangle on the color wheel.



DCC8C7



D6CBBF



BBD1D2



C1CEDA

Sweetspot

The Sweet Spot groups the original color and five complimentary colors.



DCC8C7



FFF8F7



DCC7DB



807B7A



000000



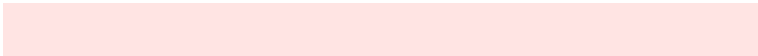
808080

Same Dimension

The Same Dimension uses a secret algorithm to generate beautiful new colors.



DCC8C7



FFE4E3



DCD2C7



6E6363



AD0800



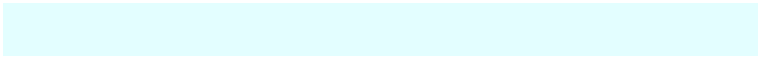
2E0200

Inverse Universe

The Inverse Universe completely reimagines the original color for something new.



C7DBDC



E3FEFF



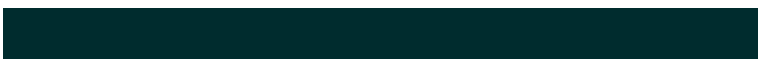
C7D1DC



636D6E



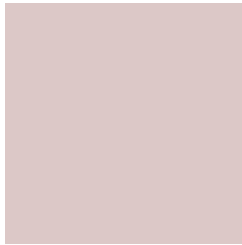
00A5AD



002C2E

Previews

White Background



This preview shows how the Hex color DCC8C7 looks on a white background.

Color Contrast Check

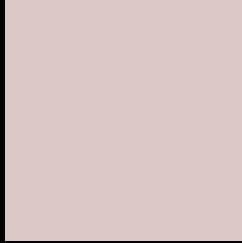
Large Text (above 18pt) WCAG AA × Fail

Any Text WCAG AA × Fail

Large Text (above 18pt) WCAG AAA × Fail

Any Text WCAG AAA × Fail

Black Background



This preview shows how the Hex color DCC8C7 looks on a black background.

Color Contrast Check

Large Text (above 18pt) WCAG AA ✓ Pass

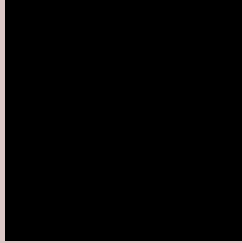
Any Text WCAG AA ✓ Pass

Large Text (above 18pt) WCAG AAA ✓ Pass

Any Text WCAG AAA ✓ Pass

If you want to check with other color combinations, try the [Color Contrast Checker](#).

Hex DCC8C7 Background



This preview shows how black text looks on a background with the Hex color DCC8C7.

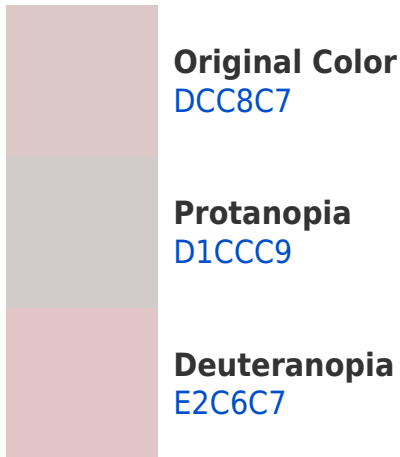


This preview shows how white text looks on a background with the Hex color DCC8C7.

Color Blindness Simulation

Color vision deficiency is a very complex topic, and I could not describe the different causes any better than Wikipedia does, so if you want to learn more, you should check out their [article about color blindness](#).

Dichromacy



Trichromacy



Original Color
DCC8C7

Protanomaly
D5CBC8

Deuteranomaly
E0C7C7

Tritanomaly
DDC7D0

Monochromacy



Original Color
DCC8C7

Achromatopsia
CECECE

Achromatomaly
D3CCCB

CSS Examples

Text

The CSS property to change the color of the text to Hex DCC8C7 is called "color". The color property can be set on classes, ids or directly on the HTML element.

This example shows how text in the color #DCC8C7 looks like.

```
.text, #text, p{  
    color:#DCC8C7  
}
```

If you want to add a text shadow in that color use the text-shadow property, you can generate a text shadow directly with our [CSS Text Shadow Generator](#).

Here you see how black text with a 4 pixel #DCC8C7 colored shadow looks like.

```
.shadow{ text-shadow: 4px 4px 2px #DCC8C7  
}
```

Border

The CSS property to change the border of an element to Hex DCC8C7 is called "border". The border property can be set on classes, ids or directly on the HTML element.

This example shows the color as border, it can be applied via the CSS property "border" or "border-color".

```
.border, #border, table{ border:4px solid  
#DCC8C7 }
```

If only the border color should be changed use the property `border-color`.

```
.border{ border-color:#DCC8C7 }
```

If you want to add a box shadow in that color use:

Here you see how a box with a 4 pixel #DCC8C7 colored shadow looks like.

```
.boxshadow{ -moz-box-shadow:4px 4px 4px  
4px #DCC8C7; -webkit-box-shadow:4px 4px  
4px 4px #DCC8C7; box-shadow:4px 4px 4px  
4px #DCC8C7 }
```

Background

The CSS property to change the background color of an element to Hex DCC8C7 is called "background". The background property can be set on classes, ids or directly on the HTML element.

```
.background, #background, body{  
background:#DCC8C7 }
```

If only the background color should be changed can be used:

```
.background{ background-color:#DCC8C7 }
```

This example shows the color as background, it is applied via the CSS property "background".

To optimize and compress your CSS code, you can use our [online CSS compressor and optimizer](#) based on csstidy. If you want to create a linear or radial gradient as background or border, check our [CSS Gradient Generator](#).

Hey! You found this booklet interesting? Support Converting Colors with the new Membership Option!

The pro membership hides all ads, plus gives you double the colors in the color bucket, and more awesome pro features!

[Learn more, Memberships starting at \\$2.50/m!](#)

**Follow me
on Twitter!**

@ConvertingColor