

# Converting Colors

Hex(DCC9C7)

Have a look what the booklet for  
Hex(DCC9C7) contains.

<b>Hex(DCC9C7)</b> .....	3
<b><i>Conversions</i></b> .....	4
<b><i>Details</i></b> .....	6
<b><i>Harmonies</i></b> .....	11
<b><i>Previews</i></b> .....	23
<b><i>Color Blindness Simulation</i></b> .....	26
<b><i>CSS Examples</i></b> .....	29

# **Color**

**Hex(DCC9C7)**

# Conversions

## Conversions Part 1

Format	Color
Hex	DCC9C7
RGB	220, 201, 199
RGB Percent	86%, 79%, 78%
CMY	0.1373, 0.2118, 0.2196
CMYK	0.00, 0.09, 0.10, 0.14
HSL	6°, 23%, 82%
HSV	6°, 10%, 86%
XYZ	60.7106, 61.1125, 62.6289
YIQ	206.4530, 11.9660, 3.4060

# Conversions

## Conversions Part 2

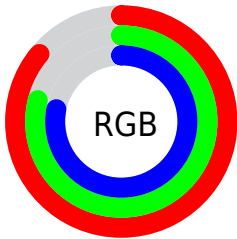
<b>Format</b>	<b>Color</b>
R <sub>Y</sub> B	220, 201, 199
Decimal	14469575
CIE Lab	82.44, 6.30, 3.39
CIE LCh	82, 7.154, 28.317
Yxy	61.1125, 0.3291, 0.3313
Android (android.graphics.Color)	4292659655 (0xFFDCC9C7)
YUV	206.4530, -3.6743, 11.8807
Hunter-Lab	78.1745, 1.8186, 7.2223

# Details

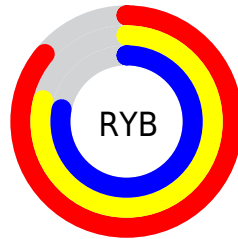
The Hex color **DCC9C7** is a light color, and the websafe version is hex **CCCCCC**. A complement of this color would be **C7DADC**, and the grayscale version is **CECECE**.

A 20% lighter version of the original color is **FFFFFF**, and **A59391** is the 20% darker color. If you saturate the color by 10%, you get **DCB5B1**, and if you desaturate by 10%, it is **DCDDDD**.

# Distribution



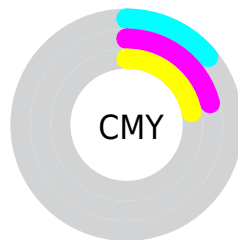
- Red (86%)
- Green (79%)
- Blue (78%)



- Red (86%)
- Yellow (79%)
- Blue (78%)



- Cyan (0%)
- Magenta (9%)
- Yellow (10%)
- Black (14%)



- Cyan (14%)
- Magenta (21%)
- Yellow (22%)

# Brightness & Saturation Gradients

These gradients show how the Hex color DCC9C7 changes by changing the brightness by 10 percent. The first figure shows a shift by +10% for each color and the second figure -10%.

Similar to the brightness gradients but the following saturation gradients show a change of the Hex color DCC9C7 by changing the saturation by 10% instead.



 DCC9C7

FFFFFF

 DCC9C7

 C0AEAC

 A59391

 8A7978

 71615F

 584947

 413231

 2A1D1C

 180401

 000000

 DCC9C7

 DCC9C7

 DCB5B1

 DCDDDD

 DCA19B

 DCF1F3

 DC8D85

 DCFFFF

 DC796F

 DC6559

 DC5243

 DC3E2D

 DC2A17

 DC1601

# Harmonies

## Analogous

The Analogous color harmony consists of three colors that are next to each other on the color wheel.



DBC9CE



DCC9C7



D9CAC2

# Triad

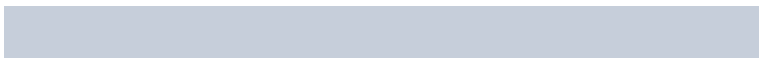
The Triadic color harmony groups three colors that are evenly spaced from another and form a triangle on the color wheel.



DCC9C7



C4D0C6



C6CEDA

# Complementary

The Complementary color scheme is a pair of colors which are on the opposite of each other on the color wheel.



DCC9C7



C7DADC

# Split Complementary

Split-complementary colors differ from the complementary color scheme. The scheme consists of three colors, the original color and two neighbors of the complement color.



C0D0D8



DCC9C7



BFD1CC

# Square

The Square scheme is like the rectangle color scheme, but the four colors are evenly spaced on the color wheel.



DCC9C7



CCCFC1



BDD1D3



CECCD9

# Rectangle

The Rectangle color scheme consists of four colors that form a rectangle on the color wheel.



DCC9C7



D6CCC0



BDD1D3



C4CEDA



# Sweetspot

The Sweet Spot groups the original color and five complimentary colors.



DCC9C7



FFF8F7



DCC7DA



807B7A



000000



808080

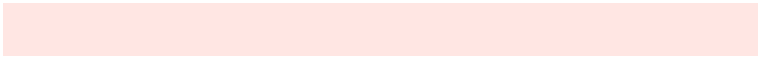


# Same Dimension

The Same Dimension uses a secret algorithm to generate beautiful new colors.



DCC9C7



FFE6E3



DCD3C7



6E6463



AD1100



2E0400

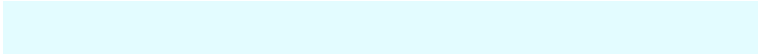


# Inverse Universe

The Inverse Universe completely reimagines the original color for something new.



C7DADC



E3FCFF



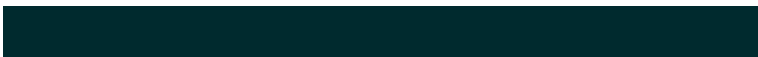
C7D0DC



636D6E



009DAD



002A2E



# Previews

## White Background



This preview shows how the Hex color DCC9C7 looks on a white background.

## Color Contrast Check

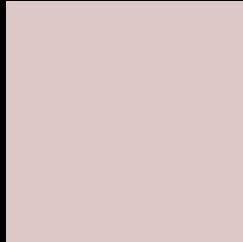
Large Text (above 18pt) WCAG AA × Fail

Any Text WCAG AA × Fail

Large Text (above 18pt) WCAG AAA × Fail

Any Text WCAG AAA × Fail

# Black Background



This preview shows how the Hex color DCC9C7 looks on a black background.

## Color Contrast Check

Large Text (above 18pt) WCAG AA ✓ Pass

Any Text WCAG AA ✓ Pass

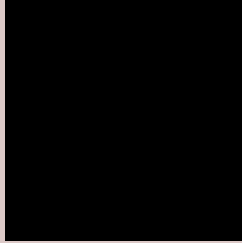
Large Text (above 18pt) WCAG AAA ✓ Pass

Any Text WCAG AAA ✓ Pass

If you want to check with other color combinations, try the [Color Contrast Checker](#).



## Hex DCC9C7 Background



This preview shows how black text looks on a background with the Hex color DCC9C7.

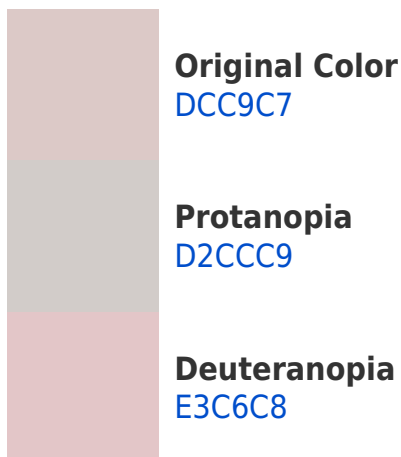


This preview shows how white text looks on a background with the Hex color DCC9C7.

# Color Blindness Simulation

Color vision deficiency is a very complex topic, and I could not describe the different causes any better than Wikipedia does, so if you want to learn more, you should check out their [article about color blindness](#).

## Dichromacy





**Tritanopia**  
DEC7D6

# Trichromacy



**Original Color**  
DCC9C7

**Protanomaly**  
D6CBC8

**Deuteranomaly**  
E0C7C8

**Tritanomaly**  
DDC8D1

# Monochromacy



**Original Color**  
DCC9C7

**Achromatopsia**  
CECECE

**Achromatomaly**  
D3CCCB

# CSS Examples

## Text

The CSS property to change the color of the text to Hex DCC9C7 is called "color". The color property can be set on classes, ids or directly on the HTML element.

This example shows how text in the color #DCC9C7 looks like.

```
.text, #text, p{  
    color:#DCC9C7  
}
```

If you want to add a text shadow in that color use the text-shadow property, you can generate a text shadow directly with our [CSS Text Shadow Generator](#).

Here you see how black text with a 4 pixel #DCC9C7 colored shadow looks like.

```
.shadow{ text-shadow: 4px 4px 2px #DCC9C7
}
```

## Border

The CSS property to change the border of an element to Hex DCC9C7 is called "border". The border property can be set on classes, ids or directly on the HTML element.

This example shows the color as border, it can be applied via the CSS property "border" or "border-color".

```
.border, #border, table{ border:4px solid
#DCC9C7 }
```

If only the border color should be changed use the property `border-color`.

```
.border{ border-color:#DCC9C7 }
```

If you want to add a box shadow in that color use:

Here you see how a box with a 4 pixel #DCC9C7 colored shadow looks like.

```
.boxshadow{ -moz-box-shadow:4px 4px 4px  
4px #DCC9C7; -webkit-box-shadow:4px 4px  
4px 4px #DCC9C7; box-shadow:4px 4px 4px  
4px #DCC9C7 }
```

# Background

The CSS property to change the background color of an element to Hex DCC9C7 is called "background". The background property can be set on classes, ids or directly on the HTML element.

```
.background, #background, body{  
background:#DCC9C7 }
```

If only the background color should be changed can be used:

```
.background{ background-color:#DCC9C7 }
```

This example shows the color as background, it is applied via the CSS property "background".

To optimize and compress your CSS code, you can use our [online CSS compressor and optimizer](#) based on csstidy. If you want to create a linear or radial gradient as background or border, check our [CSS Gradient Generator](#).



Hey! You found this booklet interesting? Support Converting Colors with the new Membership Option!

The pro membership hides all ads, plus gives you double the colors in the color bucket, and more awesome pro features!

**[Learn more, Memberships starting at \\$2.50/m!](#)**

**Follow me  
on Twitter!**

@ConvertingColor