

# Converting Colors

Hex(DD3D6D)

Have a look what the booklet for  
Hex(DD3D6D) contains.

<b>Hex(DD3D6D)</b> .....	3
<i><b>Conversions</b></i> .....	4
<i><b>Details</b></i> .....	6
<i><b>Harmonies</b></i> .....	11
<i><b>Previews</b></i> .....	23
<i><b>Color Blindness Simulation</b></i> .....	26
<i><b>CSS Examples</b></i> .....	29

# Color

Hex(DD3D6D)

# Conversions

## Conversions Part 1

<b>Format</b>	<b>Color</b>
Hex	DD3D6D
RGB	221, 61, 109
RGB Percent	87%, 24%, 43%
CMY	0.1333, 0.7608, 0.5725
CMYK	0.00, 0.72, 0.51, 0.13
HSL	342°, 70%, 55%
HSV	342°, 72%, 87%
XYZ	34.2479, 19.8138, 16.4874
YIQ	114.3120, 79.9520, 48.8480

# Conversions

## Conversions Part 2

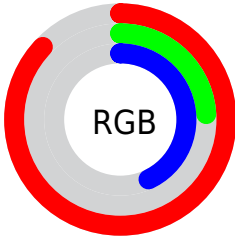
<b>Format</b>	<b>Color</b>
<b>R<sub>YB</sub></b>	221, 61, 109
Decimal	14499181
CIE Lab	51.63, 64.31, 10.00
CIE LCh	52, 65.077, 8.835
Yxy	19.8138, 0.4854, 0.2809
Android (android.graphics.Color)	4292689261 (0xFFDD3D6D)
YUV	114.3120, -2.6188, 93.5654
Hunter-Lab	44.5127, 59.4400, 9.1980

# Details

The Hex color **DD3D6D** is a dark color, and the websafe version is hex **CC3366**. The color can be described as dark muted rose. A complement of this color would be **3DDDAD**, and the grayscale version is **727272**.

A 20% lighter version of the original color is **FF78A0**, and **A0003E** is the 20% darker color. If you saturate the color by 10%, you get **DD275E**, and if you desaturate by 10%, it is **DD537C**.

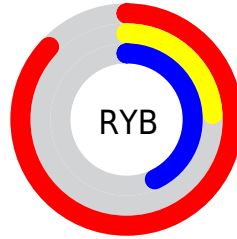
# Distribution



Red (87%)

Green (24%)

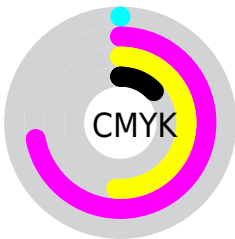
Blue (43%)



Red (87%)

Yellow (24%)

Blue (43%)

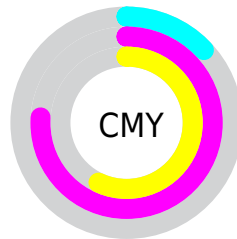


Cyan (0%)

Magenta (72%)

Yellow (51%)

Black (13%)



Cyan (13%)

Magenta (76%)

Yellow (57%)

# Brightness & Saturation Gradients

These gradients show how the Hex color DD3D6D changes by changing the brightness by 10 percent. The first figure shows a shift by +10% for each color and the second figure -10%.

Similar to the brightness gradients but the following saturation gradients show a change of the Hex color DD3D6D by changing the saturation by 10% instead.



 DD3D6D

 DD3D6D

FFFFFF

 BE1755

 FF78A0

 A0003E

 FF95BB

 820029

 FFB2D7

 640015

 FFCFF3

 480003

 FFECFF

 290001

 000000

 DD3D6D

 DD3D6D

 DD275E

 DD537C

 DD114E

 DD698C

 DD0042

 DD7F9B

 DD95AB

 DDACBA

 DDC2CA

 DDD8D9

 DDEEE9

 DDFFF8

# Harmonies

## Analogous

The Analogous color harmony consists of three colors that are next to each other on the color wheel.



C948A4



DD3D6D



D34F38

# Triad

The Triadic color harmony groups three colors that are evenly spaced from another and form a triangle on the color wheel.



DD3D6D



488B15



008CE3

# Complementary

The Complementary color scheme is a pair of colors which are on the opposite of each other on the color wheel.



DD3D6D



3DDDAD

# Split Complementary

Split-complementary colors differ from the complementary color scheme. The scheme consists of three colors, the original color and two neighbors of the complement color.



0093C0



DD3D6D



009250

# Square

The Square scheme is like the rectangle color scheme, but the four colors are evenly spaced on the color wheel.



DD3D6D



857E00



00948B



007CEA

# Rectangle

The Rectangle color scheme consists of four colors that form a rectangle on the color wheel.



DD3D6D



C06113



00948B



008FDA



# Sweetspot

The Sweet Spot groups the original color and five complimentary colors.



DD3D6D



FFC7D8



AD3DDD



805E68



000000



808080



# Same Dimension

The Same Dimension uses a secret algorithm to generate beautiful new colors.



DD3D6D



FF2164



DD5D3D



6E6366



AD0034



2E000E



# Inverse Universe

The Inverse Universe completely reimagines the original color for something new.



DD3D6D



FF2164



3DBDDD



6E6366



AD0034

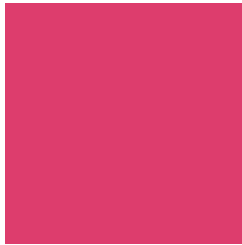


2E000E



# Previews

## White Background



This preview shows how the Hex color DD3D6D looks on a white background.

## Color Contrast Check

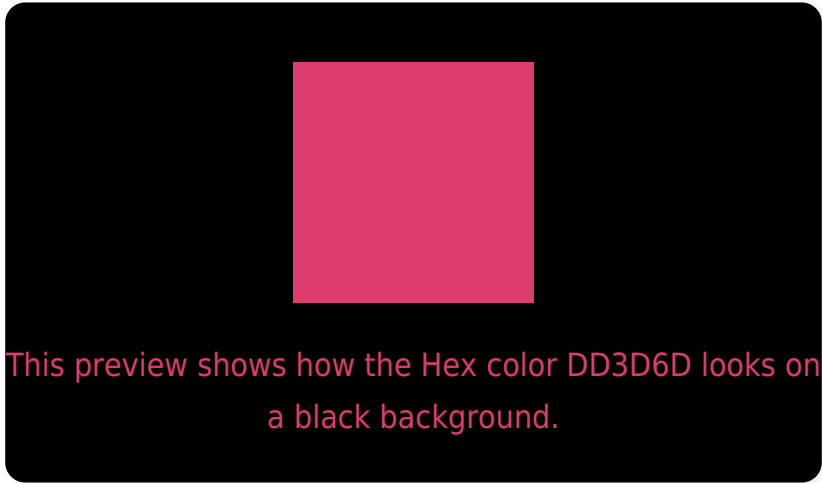
Large Text (above 18pt) WCAG AA ✓ Pass

Any Text WCAG AA ✗ Fail

Large Text (above 18pt) WCAG AAA ✗ Fail

Any Text WCAG AAA ✗ Fail

# Black Background



## Color Contrast Check

Large Text (above 18pt) WCAG AA ✓ Pass

Any Text WCAG AA ✓ Pass

Large Text (above 18pt) WCAG AAA ✓ Pass

Any Text WCAG AAA × Fail

If you want to check with other color combinations, try the [Color Contrast Checker](#).



## Hex DD3D6D Background



This preview shows how black text looks on a background with the Hex color DD3D6D.



This preview shows how white text looks on a background with the Hex color DD3D6D.

# Color Blindness Simulation

Color vision deficiency is a very complex topic, and I could not describe the different causes any better than Wikipedia does, so if you want to learn more, you should check out their [article about color blindness](#).

## Dichromacy



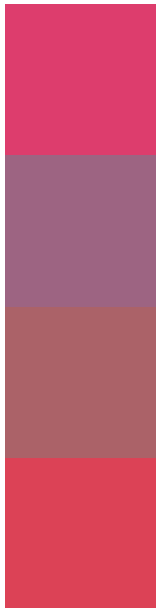
**Original Color**  
DD3D6D

**Protanopia**  
787B8E

**Deuteranopia**  
8F7765



# Trichromacy



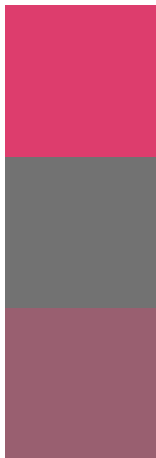
**Original Color**  
DD3D6D

**Protanomaly**  
9D6482

**Deuteranomaly**  
AB6268

**Tritanomaly**  
DC4256

# Monochromacy



**Original Color**  
DD3D6D

**Achromatopsia**  
727272

**Achromatomaly**  
995F70

# CSS Examples

## Text

The CSS property to change the color of the text to Hex DD3D6D is called "color". The color property can be set on classes, ids or directly on the HTML element.

This example shows how text in the color #DD3D6D looks like.

```
.text, #text, p{
  color:#DD3D6D
}
```

If you want to add a text shadow in that color use the text-shadow property, you can generate a text shadow directly with our [CSS Text Shadow Generator](#).

Here you see how black text with a 4 pixel #DD3D6D colored shadow looks like.

```
.shadow{ text-shadow: 4px 4px 2px #DD3D6D
}
```

## Border

The CSS property to change the border of an element to Hex DD3D6D is called "border". The border property can be set on classes, ids or directly on the HTML element.

This example shows the color as border, it can be applied via the CSS property "border" or "border-color".

```
.border, #border, table{ border:4px solid
#DD3D6D }
```

If only the border color should be changed use the property `border-color`.

```
.border{ border-color:#DD3D6D }
```

If you want to add a box shadow in that color use:

Here you see how a box with a 4 pixel #DD3D6D colored shadow looks like.

```
.boxshadow{ -moz-box-shadow:4px 4px 4px  
4px #DD3D6D; -webkit-box-shadow:4px 4px  
4px 4px #DD3D6D; box-shadow:4px 4px 4px  
4px #DD3D6D }
```

# Background

The CSS property to change the background color of an element to Hex DD3D6D is called "background". The background property can be set on classes, ids or directly on the HTML element.

```
.background, #background, body{  
background:#DD3D6D }
```

If only the background color should be changed can be used:

```
.background{ background-color:#DD3D6D }
```

This example shows the color as background, it is applied via the CSS property "background".

To optimize and compress your CSS code, you can use our [online CSS compressor and optimizer](#) based on csstidy. If you want to create a linear or radial gradient as background or border, check our [CSS Gradient Generator](#).



Hey! You found this booklet interesting? Support Converting Colors with the new Membership Option!

The pro membership hides all ads, plus gives you double the colors in the color bucket, and more awesome pro features!

**[Learn more, Memberships starting at \\$2.50/m!](#)**

**Follow me  
on Twitter!**

@ConvertingColor