

# Converting Colors

Hex(DD3E7A)

Have a look what the booklet for  
Hex(DD3E7A) contains.

<b>Hex(DD3E7A)</b> .....	3
<b><i>Conversions</i></b> .....	4
<b><i>Details</i></b> .....	6
<b><i>Harmonies</i></b> .....	11
<b><i>Previews</i></b> .....	23
<b><i>Color Blindness Simulation</i></b> .....	26
<b><i>CSS Examples</i></b> .....	29

# Color

**Hex(DD3E7A)**

# Conversions

## Conversions Part 1

Format	Color
Hex	DD3E7A
RGB	221, 62, 122
RGB Percent	87%, 24%, 48%
CMY	0.1333, 0.7569, 0.5216
CMYK	0.00, 0.72, 0.45, 0.13
HSL	337°, 70%, 55%
HSV	337°, 72%, 87%
XYZ	35.0543, 20.2225, 20.4681
YIQ	116.3810, 75.5040, 52.3680

# Conversions

## Conversions Part 2

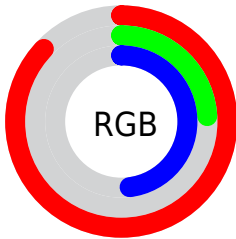
<b>Format</b>	<b>Color</b>
<b>R<sub>YB</sub></b>	221, 62, 122
Decimal	14499450
CIE <sub>Lab</sub>	52.09, 65.09, 2.82
CIE <sub>LCh</sub>	52, 65.146, 2.484
Yxy	20.2225, 0.4628, 0.2670
Android (android.graphics.Color)	4292689530 (0xFFDD3E7A)
YUV	116.3810, 2.7702, 91.7509
Hunter-Lab	44.9695, 60.4464, 4.4924

# Details

The Hex color **DD3E7A** is a dark color, and the websafe version is hex **CC3366**. The color can be described as dark muted rose. A complement of this color would be **3EDDA1**, and the grayscale version is **747474**.

A 20% lighter version of the original color is **FF79AE**, and **A0004A** is the 20% darker color. If you saturate the color by 10%, you get **DD286C**, and if you desaturate by 10%, it is **DD5488**.

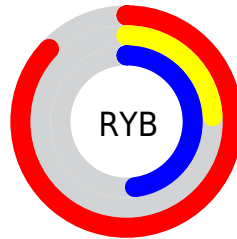
# Distribution



Red (87%)

Green (24%)

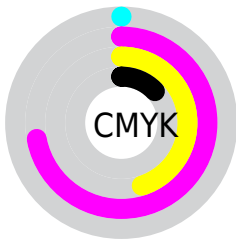
Blue (48%)



Red (87%)

Yellow (24%)

Blue (48%)

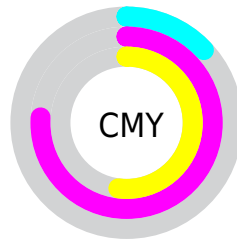


Cyan (0%)

Magenta (72%)

Yellow (45%)

Black (13%)



Cyan (13%)

Magenta (76%)

Yellow (52%)

# Brightness & Saturation Gradients

These gradients show how the Hex color DD3E7A changes by changing the brightness by 10 percent. The first figure shows a shift by +10% for each color and the second figure -10%.

Similar to the brightness gradients but the following saturation gradients show a change of the Hex color DD3E7A by changing the saturation by 10% instead.



 DD3E7A

 DD3E7A

FFFFFF

 BF1961

 FF79AE

 A0004A

 FF96CA

 830033

 FFB3E6

 65001F

 FFD0FF

 4A0004

 FFEEFF

 2B0001

 000000

 DD3E7A

 DD3E7A

 DD286C

 DD5488

 DD125E

 DD6A96

 DD0053

 DD80A3

 DD96B1

 DDADBF

 DDC3CD

 DDD9DA

 DDEFE8

 DDFFF6

# Harmonies

## Analogous

The Analogous color harmony consists of three colors that are next to each other on the color wheel.



C24FB1



DD3E7A



D94B44

# Triad

The Triadic color harmony groups three colors that are evenly spaced from another and form a triangle on the color wheel.



DD3E7A



588A04



008FDF

# Complementary

The Complementary color scheme is a pair of colors which are on the opposite of each other on the color wheel.



DD3E7A



3EDDA1

# Split Complementary

Split-complementary colors differ from the complementary color scheme. The scheme consists of three colors, the original color and two neighbors of the complement color.



0095B7



DD3E7A



009245

# Square

The Square scheme is like the rectangle color scheme, but the four colors are evenly spaced on the color wheel.



DD3E7A



917B00



00957F



0082ED

# Rectangle

The Rectangle color scheme consists of four colors that form a rectangle on the color wheel.



DD3E7A



C95D21



00957F



0092D4



# Sweetspot

The Sweet Spot groups the original color and five complimentary colors.



DD3E7A



FFC7DC



A03EDD



805E6B



000000



808080



# Same Dimension

The Same Dimension uses a secret algorithm to generate beautiful new colors.



DD3E7A



FF2476



DD513E



6E6367



AD0041



2E0011



# Inverse Universe

The Inverse Universe completely reimagines the original color for something new.



DD3E7A



FF2476



3ECADD



6E6367



AD0041

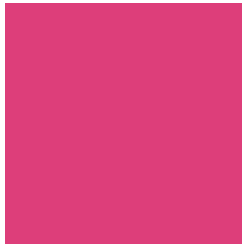


2E0011



# Previews

## White Background



This preview shows how the Hex color DD3E7A looks on a white background.

## Color Contrast Check

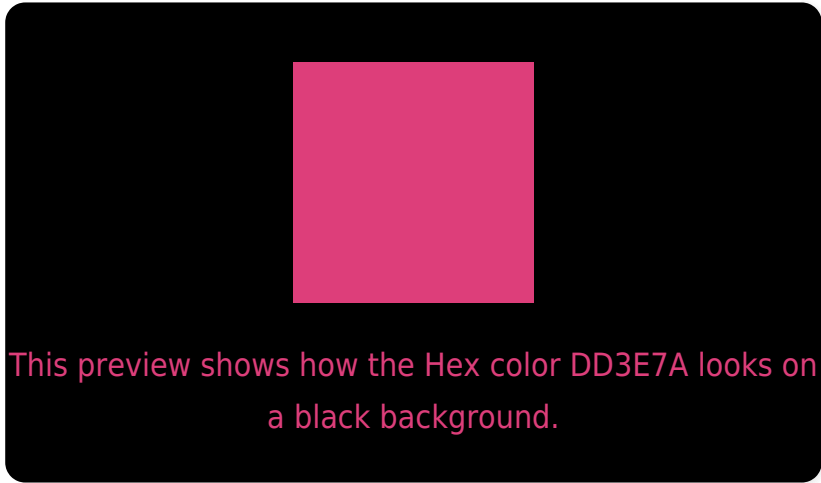
Large Text (above 18pt) WCAG AA ✓ Pass

Any Text WCAG AA × Fail

Large Text (above 18pt) WCAG AAA × Fail

Any Text WCAG AAA × Fail

# Black Background



## Color Contrast Check

Large Text (above 18pt) WCAG AA ✓ Pass

Any Text WCAG AA ✓ Pass

Large Text (above 18pt) WCAG AAA ✓ Pass

Any Text WCAG AAA × Fail

If you want to check with other color combinations, try the [Color Contrast Checker](#).



## Hex DD3E7A Background



This preview shows how black text looks on a background with the Hex color DD3E7A.



This preview shows how white text looks on a background with the Hex color DD3E7A.

# Color Blindness Simulation

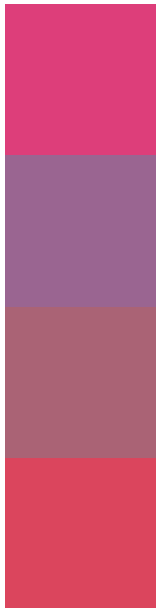
Color vision deficiency is a very complex topic, and I could not describe the different causes any better than Wikipedia does, so if you want to learn more, you should check out their [article about color blindness](#).

## Dichromacy





# Trichromacy



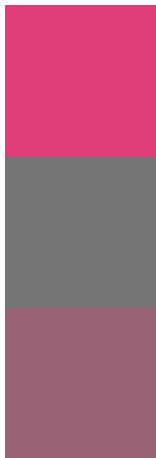
**Original Color**  
DD3E7A

**Protanomaly**  
9A6591

**Deuteranomaly**  
AA6375

**Tritanomaly**  
DB455D

# Monochromacy



**Original Color**  
DD3E7A

**Achromatopsia**  
747474

**Achromatomaly**  
9A6076

# CSS Examples

## Text

The CSS property to change the color of the text to Hex DD3E7A is called "color". The color property can be set on classes, ids or directly on the HTML element.

This example shows how text in the color #DD3E7A looks like.

```
.text, #text, p{  
    color:#DD3E7A  
}
```

If you want to add a text shadow in that color use the text-shadow property, you can generate a text shadow directly with our [CSS Text Shadow Generator](#).

Here you see how black text with a 4 pixel #DD3E7A colored shadow looks like.

```
.shadow{ text-shadow: 4px 4px 2px #DD3E7A
}
```

## Border

The CSS property to change the border of an element to Hex DD3E7A is called "border". The border property can be set on classes, ids or directly on the HTML element.

This example shows the color as border, it can be applied via the CSS property "border" or "border-color".

```
.border, #border, table{ border:4px solid
#DD3E7A }
```

If only the border color should be changed use the property `border-color`.

```
.border{ border-color:#DD3E7A }
```

If you want to add a box shadow in that color use:

Here you see how a box with a 4 pixel #DD3E7A colored shadow looks like.

```
.boxshadow{ -moz-box-shadow:4px 4px 4px  
4px #DD3E7A; -webkit-box-shadow:4px 4px  
4px 4px #DD3E7A; box-shadow:4px 4px 4px  
4px #DD3E7A }
```

# Background

The CSS property to change the background color of an element to Hex DD3E7A is called "background". The background property can be set on classes, ids or directly on the HTML element.

```
.background, #background, body{  
background:#DD3E7A }
```

If only the background color should be changed can be used:

```
.background{ background-color:#DD3E7A }
```

This example shows the color as background, it is applied via the CSS property "background".

To optimize and compress your CSS code, you can use our [online CSS compressor and optimizer](#) based on csstidy. If you want to create a linear or radial gradient as background or border, check our [CSS Gradient Generator](#).



Hey! You found this booklet interesting? Support Converting Colors with the new Membership Option!

The pro membership hides all ads, plus gives you double the colors in the color bucket, and more awesome pro features!

**[Learn more, Memberships starting at \\$2.50/m!](#)**

**Follow me  
on Twitter!**

@ConvertingColor