

# Converting Colors

Hex(DD4A7E)

Have a look what the booklet for  
Hex(DD4A7E) contains.

<b>Hex(DD4A7E)</b> .....	3
<b><i>Conversions</i></b> .....	4
<b><i>Details</i></b> .....	6
<b><i>Harmonies</i></b> .....	11
<b><i>Previews</i></b> .....	23
<b><i>Color Blindness Simulation</i></b> .....	26
<b><i>CSS Examples</i></b> .....	29

# Color

Hex(DD4A7E)

# Conversions

## Conversions Part 1

<b>Format</b>	<b>Color</b>
Hex	DD4A7E
RGB	221, 74, 126
RGB Percent	87%, 29%, 49%
CMY	0.1333, 0.7098, 0.5059
CMYK	0.00, 0.67, 0.43, 0.13
HSL	339°, 68%, 58%
HSV	339°, 67%, 87%
XYZ	36.0335, 21.7761, 22.0427
YIQ	123.8810, 70.9200, 47.3360

# Conversions

## Conversions Part 2

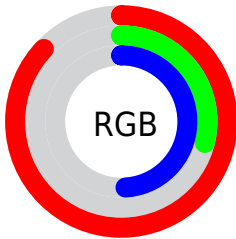
<b>Format</b>	<b>Color</b>
<b>R<sub>YB</sub></b>	221, 74, 126
Decimal	14502526
CIE <sub>Lab</sub>	53.79, 61.06, 2.89
CIE <sub>LCh</sub>	54, 61.131, 2.710
Yxy	21.7761, 0.4513, 0.2727
Android (android.graphics.Color)	4292692606 (0xFFDD4A7E)
YUV	123.8810, 1.0447, 85.1734
Hunter-Lab	46.6648, 56.1700, 4.6590

# Details

The Hex color **DD4A7E** is a dark color, and the websafe version is hex **CC3366**. The color can be described as middle muted rose. A complement of this color would be **4ADDA9**, and the grayscale version is **7C7C7C**.

A 20% lighter version of the original color is **FF83B2**, and **A1004D** is the 20% darker color. If you saturate the color by 10%, you get **DD3470**, and if you desaturate by 10%, it is **DD608C**.

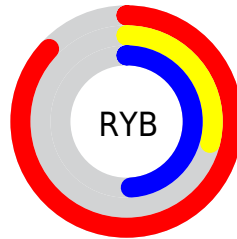
# Distribution



Red (87%)

Green (29%)

Blue (49%)



Red (87%)

Yellow (29%)

Blue (49%)

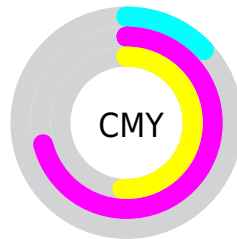


Cyan (0%)

Magenta (67%)

Yellow (43%)

Black (13%)



Cyan (13%)

Magenta (71%)

Yellow (51%)

# Brightness & Saturation Gradients

These gradients show how the Hex color DD4A7E changes by changing the brightness by 10 percent. The first figure shows a shift by +10% for each color and the second figure -10%.

Similar to the brightness gradients but the following saturation gradients show a change of the Hex color DD4A7E by changing the saturation by 10% instead.



 DD4A7E

 DD4A7E

FFFFFF

 BF2B65

 FF83B2

 A1004D

 FF9FCE

 830037

 FFBCEA

 660022

 FFD9FF

 4B000A

 FFF7FF

 2E0002

 000000

 DD4A7E

 DD4A7E

 DD3470

 DD608C

 DD1E61

 DD769B

 DD0853

 DD8CA9

 DD004E

 DDA2B7

 DDB9C5

 DDCCFD4

 DDE5E2

 DDFBF0

 DDFFFF

# Harmonies

## Analogous

The Analogous color harmony consists of three colors that are next to each other on the color wheel.



C358B2



DD4A7E



D9554B

# Triad

The Triadic color harmony groups three colors that are evenly spaced from another and form a triangle on the color wheel.



DD4A7E



608E1B



0092DE

# Complementary

The Complementary color scheme is a pair of colors which are on the opposite of each other on the color wheel.



DD4A7E



4ADDA9

# Split Complementary

Split-complementary colors differ from the complementary color scheme. The scheme consists of three colors, the original color and two neighbors of the complement color.



0098B8



DD4A7E



00954D

# Square

The Square scheme is like the rectangle color scheme, but the four colors are evenly spaced on the color wheel.



DD4A7E



958000



009984



0085EA

# Rectangle

The Rectangle color scheme consists of four colors that form a rectangle on the color wheel.



DD4A7E



CA642C



009984



0095D4



# Sweetspot

The Sweet Spot groups the original color and five complimentary colors.



DD4A7E



FFCCDE



A74ADD



80616C



000000



808080



# Same Dimension

The Same Dimension uses a secret algorithm to generate beautiful new colors.



DD4A7E



FF337B



DD5E4A



6E6367



AD003D



2E0010



# Inverse Universe

The Inverse Universe completely reimagines the original color for something new.



DD4A7E



FF337B



4AC9DD



6E6367



AD003D

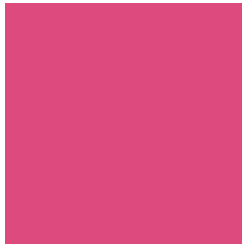


2E0010



# Previews

## White Background



This preview shows how the Hex color DD4A7E looks on a white background.

## Color Contrast Check

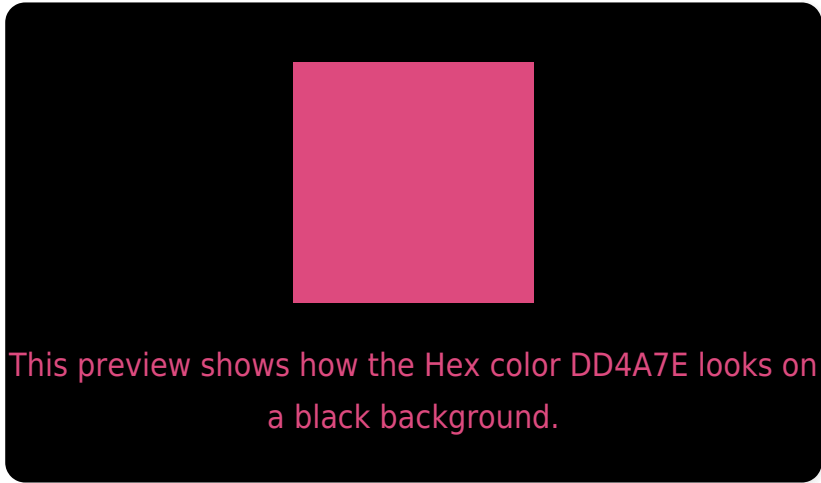
Large Text (above 18pt) WCAG AA ✓ Pass

Any Text WCAG AA ✗ Fail

Large Text (above 18pt) WCAG AAA ✗ Fail

Any Text WCAG AAA ✗ Fail

# Black Background



## Color Contrast Check

Large Text (above 18pt) WCAG AA ✓ Pass

Any Text WCAG AA ✓ Pass

Large Text (above 18pt) WCAG AAA ✓ Pass

Any Text WCAG AAA × Fail

If you want to check with other color combinations, try the [Color Contrast Checker](#).



## Hex DD4A7E Background



This preview shows how black text looks on a background with the Hex color DD4A7E.



This preview shows how white text looks on a background with the Hex color DD4A7E.

# Color Blindness Simulation

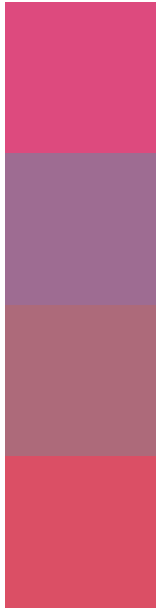
Color vision deficiency is a very complex topic, and I could not describe the different causes any better than Wikipedia does, so if you want to learn more, you should check out their [article about color blindness](#).

## Dichromacy





# Trichromacy



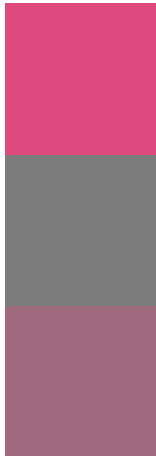
**Original Color**  
DD4A7E

**Protanomaly**  
9E6C92

**Deuteranomaly**  
AD6A7A

**Tritanomaly**  
DB4F65

# Monochromacy



**Original Color**  
DD4A7E

**Achromatopsia**  
7C7C7C

**Achromatomaly**  
9F6A7D

# CSS Examples

## Text

The CSS property to change the color of the text to Hex DD4A7E is called "color". The color property can be set on classes, ids or directly on the HTML element.

This example shows how text in the color #DD4A7E looks like.

```
.text, #text, p{  
    color:#DD4A7E  
}
```

If you want to add a text shadow in that color use the text-shadow property, you can generate a text shadow directly with our [CSS Text Shadow Generator](#).

Here you see how black text with a 4 pixel #DD4A7E colored shadow looks like.

```
.shadow{ text-shadow: 4px 4px 2px #DD4A7E
}
```

## Border

The CSS property to change the border of an element to Hex DD4A7E is called "border". The border property can be set on classes, ids or directly on the HTML element.

This example shows the color as border, it can be applied via the CSS property "border" or "border-color".

```
.border, #border, table{ border:4px solid
#DD4A7E }
```

If only the border color should be changed use the property `border-color`.

```
.border{ border-color:#DD4A7E }
```

If you want to add a box shadow in that color use:

Here you see how a box with a 4 pixel #DD4A7E colored shadow looks like.

```
.boxshadow{ -moz-box-shadow:4px 4px 4px  
4px #DD4A7E; -webkit-box-shadow:4px 4px  
4px 4px #DD4A7E; box-shadow:4px 4px 4px  
4px #DD4A7E }
```

# Background

The CSS property to change the background color of an element to Hex DD4A7E is called "background". The background property can be set on classes, ids or directly on the HTML element.

```
.background, #background, body{  
background:#DD4A7E }
```

If only the background color should be changed can be used:

```
.background{ background-color:#DD4A7E }
```

This example shows the color as background, it is applied via the CSS property "background".

To optimize and compress your CSS code, you can use our [online CSS compressor and optimizer](#) based on csstidy. If you want to create a linear or radial gradient as background or border, check our [CSS Gradient Generator](#).



Hey! You found this booklet interesting? Support Converting Colors with the new Membership Option!

The pro membership hides all ads, plus gives you double the colors in the color bucket, and more awesome pro features!

**[Learn more, Memberships starting at \\$2.50/m!](#)**

**Follow me  
on Twitter!**

@ConvertingColor