

Converting Colors

Hex(DD879F)

Have a look what the booklet for
Hex(DD879F) contains.

Hex(DD879F)	3
<i>Conversions</i>	4
<i>Details</i>	6
<i>Harmonies</i>	11
<i>Previews</i>	23
<i>Color Blindness Simulation</i>	26
<i>CSS Examples</i>	29

Color

Hex(DD879F)

Conversions

Conversions Part 1

Format	Color
Hex	DD879F
RGB	221, 135, 159
RGB Percent	87%, 53%, 62%
CMY	0.1333, 0.4706, 0.3765
CMYK	0.00, 0.39, 0.28, 0.13
HSL	343°, 56%, 70%
HSV	343°, 39%, 87%
XYZ	44.7408, 35.2033, 37.2377
YIQ	163.4500, 43.5520, 25.6960

Conversions

Conversions Part 2

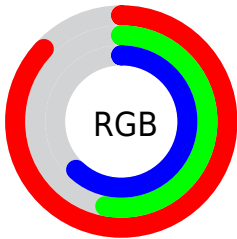
Format	Color
R _Y B	221, 135, 159
Decimal	14518175
CIE Lab	65.91, 35.90, 1.35
CIE LCh	66, 35.928, 2.161
Yxy	35.2033, 0.3818, 0.3004
Android (android.graphics.Color)	4292708255 (0xFFDD879F)
YUV	163.4500, -2.1938, 50.4714
Hunter-Lab	59.3324, 30.7699, 4.3215

Details

The Hex color **DD879F** is a light color, and the websafe version is hex **FF99CC**. A complement of this color would be **87DDC5**, and the grayscale version is **A3A3A3**.

A 20% lighter version of the original color is **FFBDD6**, and **A4536C** is the 20% darker color. If you saturate the color by 10%, you get **DD718F**, and if you desaturate by 10%, it is **DD9DAF**.

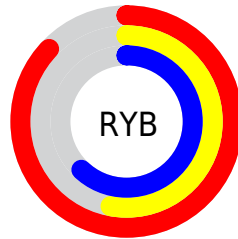
Distribution



Red (87%)

Green (53%)

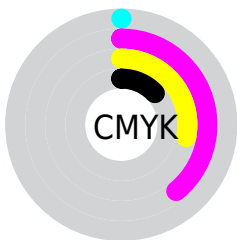
Blue (62%)



Red (87%)

Yellow (53%)

Blue (62%)

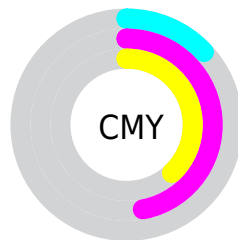


Cyan (0%)

Magenta (39%)

Yellow (28%)

Black (13%)



Cyan (13%)

Magenta (47%)

Yellow (38%)

Brightness & Saturation Gradients

These gradients show how the Hex color DD879F changes by changing the brightness by 10 percent. The first figure shows a shift by +10% for each color and the second figure -10%.

Similar to the brightness gradients but the following saturation gradients show a change of the Hex color DD879F by changing the saturation by 10% instead.

 DD879F

 DD879F

FFFFFF

 C06D85

 FFBDD6

 A4536C

 FFD AF2

 883A54

 FFF6FF

 6D223D

 530527

 390012

 200001

 000000

 DD879F

 DD879F

 DD718F

 DD9DAF

 DD5B7F

 DDB3BF

 DD456F

 DDC9CF

 DD2F5F

 DDDFDF

 DD184F

 DDF6EF

 DD023F

 DDFFFF

 DD003E

Harmonies

Analogous

The Analogous color harmony consists of three colors that are next to each other on the color wheel.



CB8CBF



DD879F



DD8A7F

Triad

The Triadic color harmony groups three colors that are evenly spaced from another and form a triangle on the color wheel.



DD879F



91A868



3CABD8

Complementary

The Complementary color scheme is a pair of colors which are on the opposite of each other on the color wheel.



DD879F



87DDC5

Split Complementary

Split-complementary colors differ from the complementary color scheme. The scheme consists of three colors, the original color and two neighbors of the complement color.



13B0C1



DD879F



6AAF81

Square

The Square scheme is like the rectangle color scheme, but the four colors are evenly spaced on the color wheel.



DD879F



B39F5F



3EB1A1



75A3E0

Rectangle

The Rectangle color scheme consists of four colors that form a rectangle on the color wheel.



DD879F



D4906E



3EB1A1



28AED2

Sweetspot

The Sweet Spot groups the original color and five complimentary colors.



DD879F



FFE0E9



C587DD



806E73



000000



808080

Same Dimension

The Same Dimension uses a secret algorithm to generate beautiful new colors.



DD879F



FF87A9



DD9A87



6E6366



AD0030



2E000D

Inverse Universe

The Inverse Universe completely reimagines the original color for something new.



DD879F



FF87A9



87CADD



6E6366



AD0030



2E000D

Previews

White Background



This preview shows how the Hex color DD879F looks on a white background.

Color Contrast Check

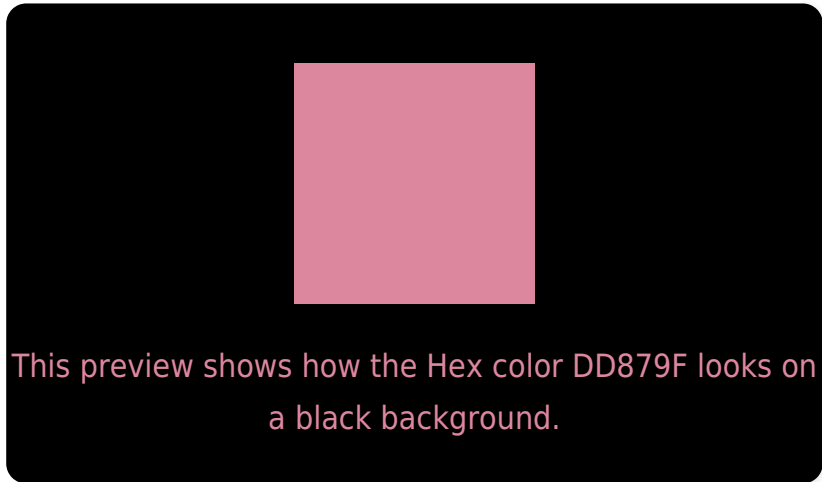
Large Text (above 18pt) WCAG AA × Fail

Any Text WCAG AA × Fail

Large Text (above 18pt) WCAG AAA × Fail

Any Text WCAG AAA × Fail

Black Background



Color Contrast Check

Large Text (above 18pt) WCAG AA ✓ Pass

Any Text WCAG AA ✓ Pass

Large Text (above 18pt) WCAG AAA ✓ Pass

Any Text WCAG AAA ✓ Pass

If you want to check with other color combinations, try the [Color Contrast Checker](#).

Hex DD879F Background



This preview shows how black text looks on a background with the Hex color DD879F.



This preview shows how white text looks on a background with the Hex color DD879F.

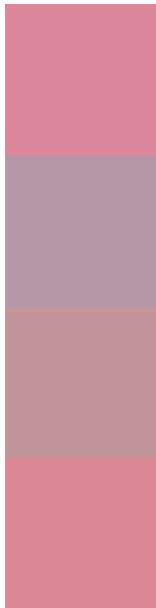
Color Blindness Simulation

Color vision deficiency is a very complex topic, and I could not describe the different causes any better than Wikipedia does, so if you want to learn more, you should check out their [article about color blindness](#).

Dichromacy



Trichromacy



Original Color
DD879F

Protanomaly
B697A8

Deuteranomaly
C2949C

Tritanomaly
DC8897

Monochromacy



Original Color
DD879F

Achromatopsia
A3A3A3

Achromatomaly
B899A2

CSS Examples

Text

The CSS property to change the color of the text to Hex DD879F is called "color". The color property can be set on classes, ids or directly on the HTML element.

This example shows how text in the color #DD879F looks like.

```
.text, #text, p{  
    color:#DD879F  
}
```

If you want to add a text shadow in that color use the text-shadow property, you can generate a text shadow directly with our [CSS Text Shadow Generator](#).

Here you see how black text with a 4 pixel #DD879F colored shadow looks like.

```
.shadow{ text-shadow: 4px 4px 2px #DD879F
}
```

Border

The CSS property to change the border of an element to Hex DD879F is called "border". The border property can be set on classes, ids or directly on the HTML element.

This example shows the color as border, it can be applied via the CSS property "border" or "border-color".

```
.border, #border, table{ border:4px solid
#DD879F }
```

If only the border color should be changed use the property `border-color`.

```
.border{ border-color:#DD879F }
```

If you want to add a box shadow in that color use:

Here you see how a box with a 4 pixel #DD879F colored shadow looks like.

```
.boxshadow{ -moz-box-shadow:4px 4px 4px  
4px #DD879F; -webkit-box-shadow:4px 4px  
4px 4px #DD879F; box-shadow:4px 4px 4px  
4px #DD879F }
```

Background

The CSS property to change the background color of an element to Hex DD879F is called "background". The background property can be set on classes, ids or directly on the HTML element.

```
.background, #background, body{  
background:#DD879F }
```

If only the background color should be changed can be used:

```
.background{ background-color:#DD879F }
```

This example shows the color as background, it is applied via the CSS property "background".

To optimize and compress your CSS code, you can use our [online CSS compressor and optimizer](#) based on csstidy. If you want to create a linear or radial gradient as background or border, check our [CSS Gradient Generator](#).

Hey! You found this booklet interesting? Support Converting Colors with the new Membership Option!

The pro membership hides all ads, plus gives you double the colors in the color bucket, and more awesome pro features!

[Learn more, Memberships starting at \\$2.50/m!](#)

**Follow me
on Twitter!**

@ConvertingColor