

Converting Colors

Hex(DD8D9C)

Have a look what the booklet for
Hex(DD8D9C) contains.

Hex(DD8D9C)	3
<i>Conversions</i>	4
<i>Details</i>	6
<i>Harmonies</i>	11
<i>Previews</i>	23
<i>Color Blindness Simulation</i>	26
<i>CSS Examples</i>	29

Color

Hex(DD8D9C)

Conversions

Conversions Part 1

Format	Color
Hex	DD8D9C
RGB	221, 141, 156
RGB Percent	87%, 55%, 61%
CMY	0.1333, 0.4471, 0.3882
CMYK	0.00, 0.36, 0.29, 0.13
HSL	349°, 54%, 71%
HSV	349°, 36%, 87%
XYZ	45.3444, 36.8222, 36.1700
YIQ	166.6300, 42.8650, 21.6250

Conversions

Conversions Part 2

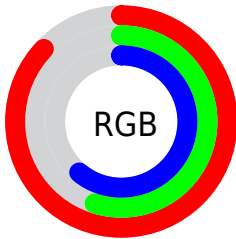
Format	Color
R _Y B	221, 141, 156
Decimal	14519708
CIE Lab	67.14, 32.31, 4.84
CIE LCh	67, 32.673, 8.514
Yxy	36.8222, 0.3832, 0.3112
Android (android.graphics.Color)	4292709788 (0xFFDD8D9C)
YUV	166.6300, -5.2406, 47.6825
Hunter-Lab	60.6813, 27.1928, 7.1362

Details

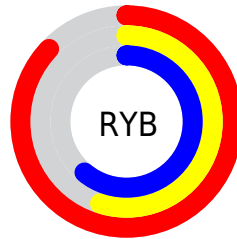
The Hex color **DD8D9C** is a light color, and the websafe version is hex **CC9999**. A complement of this color would be **8DDDCE**, and the grayscale version is **A7A7A7**.

A 20% lighter version of the original color is **FFC3D2**, and **A45969** is the 20% darker color. If you saturate the color by 10%, you get **DD778A**, and if you desaturate by 10%, it is **DDA3AE**.

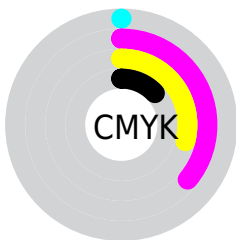
Distribution



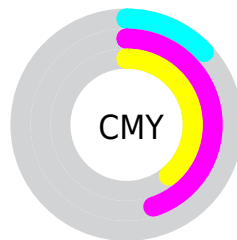
- Red (87%)
- Green (55%)
- Blue (61%)



- Red (87%)
- Yellow (55%)
- Blue (61%)



- Cyan (0%)
- Magenta (36%)
- Yellow (29%)
- Black (13%)



- Cyan (13%)
- Magenta (45%)
- Yellow (39%)

Brightness & Saturation Gradients

These gradients show how the Hex color DD8D9C changes by changing the brightness by 10 percent. The first figure shows a shift by +10% for each color and the second figure -10%.

Similar to the brightness gradients but the following saturation gradients show a change of the Hex color DD8D9C by changing the saturation by 10% instead.

 DD8D9C

 DD8D9C

FFFFFF

 C07382

 FFC3D2

 A45969

 FFE0EF

 884151

 FFFDFD

 6D293A

 530F25

 3A000F

 220001

 000000

 DD8D9C

 DD8D9C

 DD778A

 DDA3AE

 DD6178

 DDB9C0

 DD4B66

 DDCFD2

 DD3554

 DDE5E4

 DD1E42

 DDFCF6

 DD0830

 DDFFFF

 DD0029

Harmonies

Analogous

The Analogous color harmony consists of three colors that are next to each other on the color wheel.



D090BA



DD8D9C



DA9180

Triad

The Triadic color harmony groups three colors that are evenly spaced from another and form a triangle on the color wheel.



DD8D9C



8FAD75



5AACD9

Complementary

The Complementary color scheme is a pair of colors which are on the opposite of each other on the color wheel.



DD8D9C



8DDDCE

Split Complementary

Split-complementary colors differ from the complementary color scheme. The scheme consists of three colors, the original color and two neighbors of the complement color.



3CB2C7



DD8D9C



6CB28D

Square

The Square scheme is like the rectangle color scheme, but the four colors are evenly spaced on the color wheel.



DD8D9C



AFA469



49B4AB



88A3DD

Rectangle

The Rectangle color scheme consists of four colors that form a rectangle on the color wheel.



DD8D9C



D09772



49B4AB



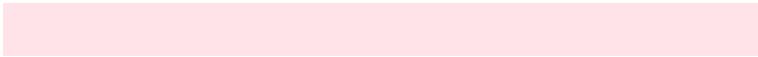
4CAFD5

Sweetspot

The Sweet Spot groups the original color and five complimentary colors.



DD8D9C



FFE3E8



CD8DDD



806F72



000000



808080

Same Dimension

The Same Dimension uses a secret algorithm to generate beautiful new colors.



DD8D9C



FF91A6



DDA58D



6E6365



AD0021



2E0009

Inverse Universe

The Inverse Universe completely reimagines the original color for something new.



DD8D9C



FF91A6



8DC5DD



6E6365



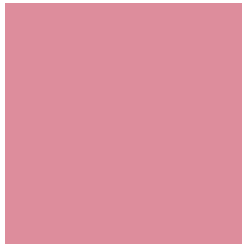
AD0021



2E0009

Previews

White Background



This preview shows how the Hex color DD8D9C looks on a white background.

Color Contrast Check

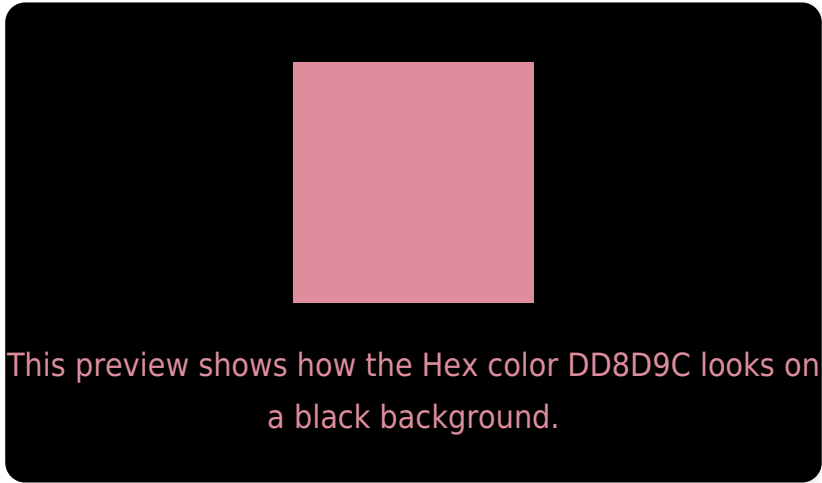
Large Text (above 18pt) WCAG AA × Fail

Any Text WCAG AA × Fail

Large Text (above 18pt) WCAG AAA × Fail

Any Text WCAG AAA × Fail

Black Background



Color Contrast Check

Large Text (above 18pt) WCAG AA ✓ Pass

Any Text WCAG AA ✓ Pass

Large Text (above 18pt) WCAG AAA ✓ Pass

Any Text WCAG AAA ✓ Pass

If you want to check with other color combinations, try the [Color Contrast Checker](#).

Hex DD8D9C Background



This preview shows how black text looks on a background with the Hex color DD8D9C.



This preview shows how white text looks on a background with the Hex color DD8D9C.

Color Blindness Simulation

Color vision deficiency is a very complex topic, and I could not describe the different causes any better than Wikipedia does, so if you want to learn more, you should check out their [article about color blindness](#).

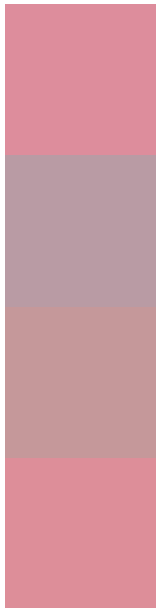
Dichromacy





Tritanopia
DD8E98

Trichromacy



Original Color
DD8D9C

Protanomaly
B99BA4

Deuteranomaly
C5989A

Tritanomaly
DD8E99

Monochromacy



Original Color
DD8D9C

Achromatopsia
A7A7A7

Achromatomaly
BB9EA3

CSS Examples

Text

The CSS property to change the color of the text to Hex DD8D9C is called "color". The color property can be set on classes, ids or directly on the HTML element.

This example shows how text in the color #DD8D9C looks like.

```
.text, #text, p{  
    color:#DD8D9C  
}
```

If you want to add a text shadow in that color use the text-shadow property, you can generate a text shadow directly with our [CSS Text Shadow Generator](#).

Here you see how black text with a 4 pixel #DD8D9C colored shadow looks like.

```
.shadow{ text-shadow: 4px 4px 2px #DD8D9C
}
```

Border

The CSS property to change the border of an element to Hex DD8D9C is called "border". The border property can be set on classes, ids or directly on the HTML element.

This example shows the color as border, it can be applied via the CSS property "border" or "border-color".

```
.border, #border, table{ border:4px solid
#DD8D9C }
```

If only the border color should be changed use the property `border-color`.

```
.border{ border-color:#DD8D9C }
```

If you want to add a box shadow in that color use:

Here you see how a box with a 4 pixel #DD8D9C colored shadow looks like.

```
.boxshadow{ -moz-box-shadow:4px 4px 4px  
4px #DD8D9C; -webkit-box-shadow:4px 4px  
4px 4px #DD8D9C; box-shadow:4px 4px 4px  
4px #DD8D9C }
```

Background

The CSS property to change the background color of an element to Hex DD8D9C is called "background". The background property can be set on classes, ids or directly on the HTML element.

```
.background, #background, body{  
background:#DD8D9C }
```

If only the background color should be changed can be used:

```
.background{ background-color:#DD8D9C }
```

This example shows the color as background, it is applied via the CSS property "background".

To optimize and compress your CSS code, you can use our [online CSS compressor and optimizer](#) based on csstidy. If you want to create a linear or radial gradient as background or border, check our [CSS Gradient Generator](#).

Hey! You found this booklet interesting? Support Converting Colors with the new Membership Option!

The pro membership hides all ads, plus gives you double the colors in the color bucket, and more awesome pro features!

[Learn more, Memberships starting at \\$2.50/m!](#)

**Follow me
on Twitter!**

@ConvertingColor