

# Converting Colors

Hex(DD9BA7)

Have a look what the booklet for  
Hex(DD9BA7) contains.

<b>Hex(DD9BA7)</b> .....	3
<i><b>Conversions</b></i> .....	4
<i><b>Details</b></i> .....	6
<i><b>Harmonies</b></i> .....	11
<i><b>Previews</b></i> .....	23
<i><b>Color Blindness Simulation</b></i> .....	26
<i><b>CSS Examples</b></i> .....	29

# **Color**

**Hex(DD9BA7)**

# Conversions

## Conversions Part 1

Format	Color
Hex	DD9BA7
RGB	221, 155, 167
RGB Percent	87%, 61%, 65%
CMY	0.1333, 0.3922, 0.3451
CMYK	0.00, 0.30, 0.24, 0.13
HSL	349°, 49%, 74%
HSV	349°, 30%, 87%
XYZ	48.5152, 41.6049, 42.0327
YIQ	176.1020, 35.4840, 17.7240

# Conversions

## Conversions Part 2

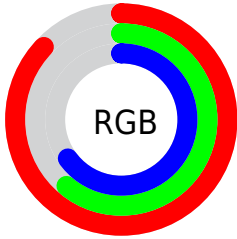
<b>Format</b>	<b>Color</b>
<b>R<sub>YB</sub></b>	221, 155, 167
Decimal	14523303
CIE <sub>Lab</sub>	70.60, 26.33, 3.68
CIE <sub>LCh</sub>	71, 26.582, 7.958
Yxy	41.6049, 0.3671, 0.3148
Android (android.graphics.Color)	4292713383 (0xFFDD9BA7)
YUV	176.1020, -4.4873, 39.3755
Hunter-Lab	64.5018, 21.3810, 6.5149

# Details

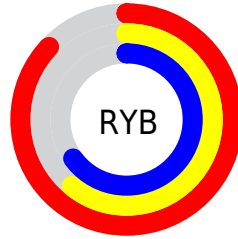
The Hex color **DD9BA7** is a light color, and the websafe version is hex **CC9999**. A complement of this color would be **9BDDD1**, and the grayscale version is **B0B0B0**.

A 20% lighter version of the original color is **FFD2DE**, and **A56773** is the 20% darker color. If you saturate the color by 10%, you get **DD8595**, and if you desaturate by 10%, it is **DDB1B9**.

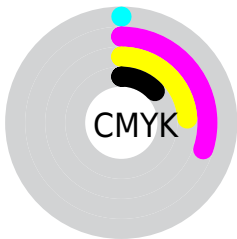
# Distribution



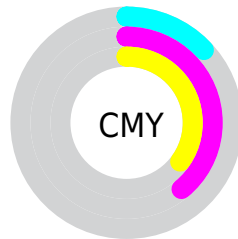
- Red (87%)
- Green (61%)
- Blue (65%)



- Red (87%)
- Yellow (61%)
- Blue (65%)



- Cyan (0%)
- Magenta (30%)
- Yellow (24%)
- Black (13%)



- Cyan (13%)
- Magenta (39%)
- Yellow (35%)

# Brightness & Saturation Gradients

These gradients show how the Hex color DD9BA7 changes by changing the brightness by 10 percent. The first figure shows a shift by +10% for each color and the second figure -10%.

Similar to the brightness gradients but the following saturation gradients show a change of the Hex color DD9BA7 by changing the saturation by 10% instead.



 DD9BA7

 DD9BA7

FFFFFF

 C0818D

 FFD2DE

 A56773

 FFEEFB

 894E5B

 6F3743

 55202D

 3C0819

 290001

 000000

 DD9BA7

 DD9BA7

 DD8595

 DDB1B9

 DD6F83

 DDC7CB

 DD5971

 DDDDDD

 DD435F

 DDF3EF

 DD2C4D

 DDFFFF

 DD163B

 DD0028

# Harmonies

## Analogous

The Analogous color harmony consists of three colors that are next to each other on the color wheel.



D19DBF



DD9BA7



DB9E90

# Triad

The Triadic color harmony groups three colors that are evenly spaced from another and form a triangle on the color wheel.



DD9BA7



9DB486



77B4D9

# Complementary

The Complementary color scheme is a pair of colors which are on the opposite of each other on the color wheel.



DD9BA7



9BDDD1

# Split Complementary

Split-complementary colors differ from the complementary color scheme. The scheme consists of three colors, the original color and two neighbors of the complement color.



65B9CA



DD9BA7



81B99A

# Square

The Square scheme is like the rectangle color scheme, but the four colors are evenly spaced on the color wheel.



DD9BA7



B8AD7D



6BBAB2



98ADDC

# Rectangle

The Rectangle color scheme consists of four colors that form a rectangle on the color wheel.



DD9BA7



D3A285



6BBAB2



6FB6D5



# Sweetspot

The Sweet Spot groups the original color and five complimentary colors.



DD9BA7



FFE8EC



D19BDD



807174



000000



808080



# Same Dimension

The Same Dimension uses a secret algorithm to generate beautiful new colors.



DD9BA7



FFA3B4



DDB09B



6E6365



AD0020



2E0008



# Inverse Universe

The Inverse Universe completely reimagines the original color for something new.



DD9BA7



FFA3B4



9BC8DD



6E6365



AD0020

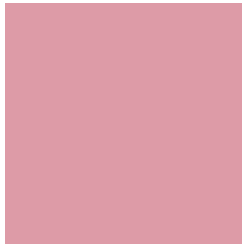


2E0008



# Previews

## White Background



This preview shows how the Hex color DD9BA7 looks on a white background.

## Color Contrast Check

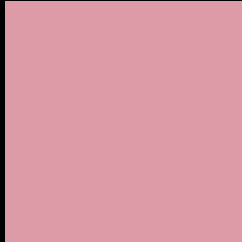
Large Text (above 18pt) WCAG AA × Fail

Any Text WCAG AA × Fail

Large Text (above 18pt) WCAG AAA × Fail

Any Text WCAG AAA × Fail

# Black Background



This preview shows how the Hex color DD9BA7 looks on a black background.

## Color Contrast Check

Large Text (above 18pt) WCAG AA ✓ Pass

Any Text WCAG AA ✓ Pass

Large Text (above 18pt) WCAG AAA ✓ Pass

Any Text WCAG AAA ✓ Pass

If you want to check with other color combinations, try the [Color Contrast Checker](#).



## Hex DD9BA7 Background



This preview shows how black text looks on a background with the Hex color DD9BA7.

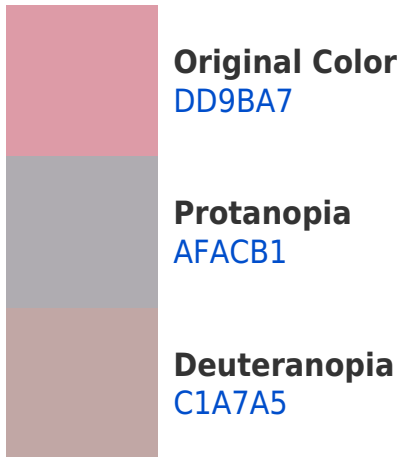


This preview shows how white text looks on a background with the Hex color DD9BA7.

# Color Blindness Simulation

Color vision deficiency is a very complex topic, and I could not describe the different causes any better than Wikipedia does, so if you want to learn more, you should check out their [article about color blindness](#).

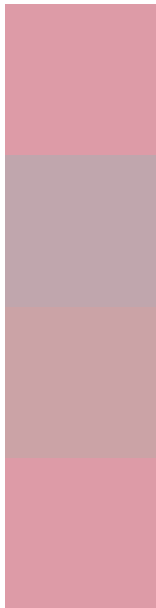
## Dichromacy





**Tritanopia**  
DD9BA7

# Trichromacy



**Original Color**  
DD9BA7

**Protanomaly**  
C0A6AD

**Deuteranomaly**  
CBA3A6

**Tritanomaly**  
DD9BA7

# Monochromacy



**Original Color**  
DD9BA7

**Achromatopsia**  
B0B0B0

**Achromatomaly**  
C0A8AD

# CSS Examples

## Text

The CSS property to change the color of the text to Hex DD9BA7 is called "color". The color property can be set on classes, ids or directly on the HTML element.

This example shows how text in the color #DD9BA7 looks like.

```
.text, #text, p{  
    color:#DD9BA7  
}
```

If you want to add a text shadow in that color use the text-shadow property, you can generate a text shadow directly with our [CSS Text Shadow Generator](#).

Here you see how black text with a 4 pixel #DD9BA7 colored shadow looks like.

```
.shadow{ text-shadow: 4px 4px 2px #DD9BA7
}
```

## Border

The CSS property to change the border of an element to Hex DD9BA7 is called "border". The border property can be set on classes, ids or directly on the HTML element.

This example shows the color as border, it can be applied via the CSS property "border" or "border-color".

```
.border, #border, table{ border:4px solid
#DD9BA7 }
```

If only the border color should be changed use the property `border-color`.

```
.border{ border-color:#DD9BA7 }
```

If you want to add a box shadow in that color use:

Here you see how a box with a 4 pixel #DD9BA7 colored shadow looks like.

```
.boxshadow{ -moz-box-shadow:4px 4px 4px  
4px #DD9BA7; -webkit-box-shadow:4px 4px  
4px 4px #DD9BA7; box-shadow:4px 4px 4px  
4px #DD9BA7 }
```

# Background

The CSS property to change the background color of an element to Hex DD9BA7 is called "background". The background property can be set on classes, ids or directly on the HTML element.

```
.background, #background, body{  
background:#DD9BA7 }
```

If only the background color should be changed can be used:

```
.background{ background-color:#DD9BA7 }
```

This example shows the color as background, it is applied via the CSS property "background".

To optimize and compress your CSS code, you can use our [online CSS compressor and optimizer](#) based on csstidy. If you want to create a linear or radial gradient as background or border, check our [CSS Gradient Generator](#).



Hey! You found this booklet interesting? Support Converting Colors with the new Membership Option!

The pro membership hides all ads, plus gives you double the colors in the color bucket, and more awesome pro features!

**[Learn more, Memberships starting at \\$2.50/m!](#)**

**Follow me  
on Twitter!**

@ConvertingColor