

Converting Colors

Hex(DD9CCE)

Have a look what the booklet for
Hex(DD9CCE) contains.

Hex(DD9CCE)	3
<i>Conversions</i>	4
<i>Details</i>	6
<i>Harmonies</i>	11
<i>Previews</i>	23
<i>Color Blindness Simulation</i>	26
<i>CSS Examples</i>	29

Color

Hex(DD9CCE)

Conversions

Conversions Part 1

Format	Color
Hex	DD9CCE
RGB	221, 156, 206
RGB Percent	87%, 61%, 81%
CMY	0.1333, 0.3882, 0.1922
CMYK	0.00, 0.29, 0.07, 0.13
HSL	314°, 49%, 74%
HSV	314°, 29%, 87%
XYZ	52.8478, 43.6053, 64.0238
YIQ	181.1350, 22.6900, 29.3300

Conversions

Conversions Part 2

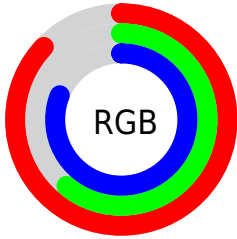
Format	Color
R_{YB}	221, 156, 206
Decimal	14523598
CIE _{Lab}	71.96, 31.99, -15.89
CIE _{LCh}	72, 35.725, 333.585
Yxy	43.6053, 0.3293, 0.2717
Android (android.graphics.Color)	4292713678 (0xFFDD9CCE)
YUV	181.1350, 12.2584, 34.9616
Hunter-Lab	66.0343, 27.2950, -11.2608

Details

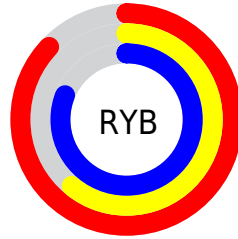
The Hex color **DD9CCE** is a light color, and the websafe version is hex **CC99CC**. A complement of this color would be **9CDDAB**, and the grayscale version is **B5B5B5**.

A 20% lighter version of the original color is **FFD3FF**, and **A56898** is the 20% darker color. If you saturate the color by 10%, you get **DD86C9**, and if you desaturate by 10%, it is **DDB2D3**.

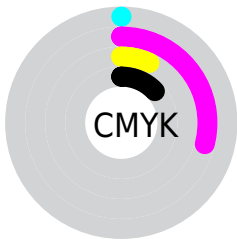
Distribution



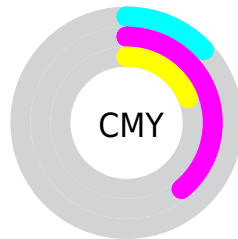
- Red (87%)
- Green (61%)
- Blue (81%)



- Red (87%)
- Yellow (61%)
- Blue (81%)



- Cyan (0%)
- Magenta (29%)
- Yellow (7%)
- Black (13%)



- Cyan (13%)
- Magenta (39%)
- Yellow (19%)

Brightness & Saturation Gradients

These gradients show how the Hex color DD9CCE changes by changing the brightness by 10 percent. The first figure shows a shift by +10% for each color and the second figure -10%.

Similar to the brightness gradients but the following saturation gradients show a change of the Hex color DD9CCE by changing the saturation by 10% instead.

 DD9CCE

 DD9CCE

FFFFFF

 C182B2

 FFD3FF

 A56898

 FFF0FF

 8A4F7E

 703765

 561F4D

 3E0536

 290021

 000005

 000000

 DD9CCE

 DD9CCE

 DD86C9

 DDB2D3

 DD70C4

 DDC8D8

 DD5ABF

 DDEDED

 DD44BA

 DDF4E2

 DD2EB5

 DDFFE8

 DD17AF

 DDF FED

 DD01AA

 DDFFF2

 DD00AA

 DDFFF7

 DDFFFC

Harmonies

Analogous

The Analogous color harmony consists of three colors that are next to each other on the color wheel.



BAA7E7



DD9CCE



EF97AE

Triad

The Triadic color harmony groups three colors that are evenly spaced from another and form a triangle on the color wheel.



DD9CCE



C3B06F



37C1D3

Complementary

The Complementary color scheme is a pair of colors which are on the opposite of each other on the color wheel.



DD9CCE



9CDDAB

Split Complementary

Split-complementary colors differ from the complementary color scheme. The scheme consists of three colors, the original color and two neighbors of the complement color.



50C2B3



DD9CCE



A0B979

Square

The Square scheme is like the rectangle color scheme, but the four colors are evenly spaced on the color wheel.



DD9CCE



DEA477



79BF92



55BBEA

Rectangle

The Rectangle color scheme consists of four colors that form a rectangle on the color wheel.



DD9CCE



F19998



79BF92



3BC2C9

Sweetspot

The Sweet Spot groups the original color and five complimentary colors.



DD9CCE



FFE8FA



AA9CDD



80717C



000000



808080

Same Dimension

The Same Dimension uses a secret algorithm to generate beautiful new colors.



DD9CCE



FFA6EA



DD9CAE



6E636B



AD0085



2E0023

Inverse Universe

The Inverse Universe completely reimagines the original color for something new.



DD9CCE



FFA6EA



9CDDCB



6E636B



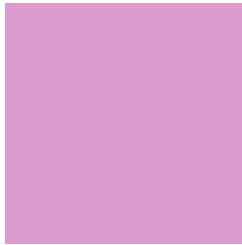
AD0085



2E0023

Previews

White Background



This preview shows how the Hex color DD9CCE looks on a white background.

Color Contrast Check

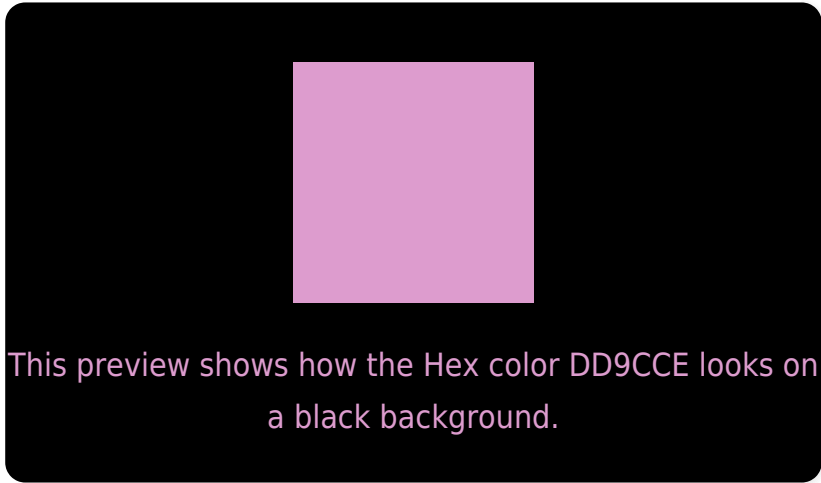
Large Text (above 18pt) WCAG AA × Fail

Any Text WCAG AA × Fail

Large Text (above 18pt) WCAG AAA × Fail

Any Text WCAG AAA × Fail

Black Background



Color Contrast Check

Large Text (above 18pt) WCAG AA ✓ Pass

Any Text WCAG AA ✓ Pass

Large Text (above 18pt) WCAG AAA ✓ Pass

Any Text WCAG AAA ✓ Pass

If you want to check with other color combinations, try the [Color Contrast Checker](#).

Hex DD9CCE Background



This preview shows how black text looks on a background with the Hex color DD9CCE.

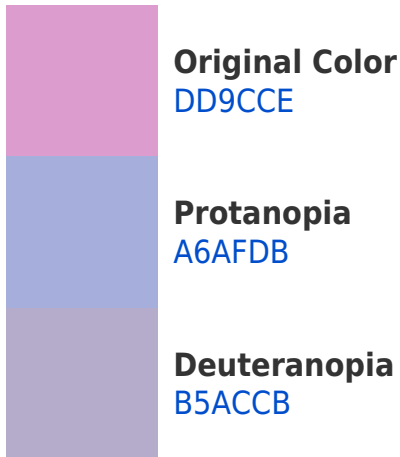


This preview shows how white text looks on a background with the Hex color DD9CCE.

Color Blindness Simulation

Color vision deficiency is a very complex topic, and I could not describe the different causes any better than Wikipedia does, so if you want to learn more, you should check out their [article about color blindness](#).

Dichromacy





Tritanopia
D9A2AE

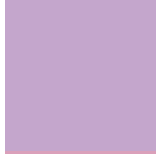
Trichromacy



Original Color
DD9CCE



Protanomaly
BAA8D6



Deuteranomaly
C4A6CC

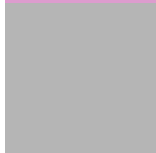


Tritanomaly
DAA0BA

Monochromacy



Original Color
DD9CCE



Achromatopsia
B5B5B5



Achromatomaly
C4ACBE

CSS Examples

Text

The CSS property to change the color of the text to Hex DD9CCE is called "color". The color property can be set on classes, ids or directly on the HTML element.

This example shows how text in the color #DD9CCE looks like.

```
.text, #text, p{  
    color:#DD9CCE  
}
```

If you want to add a text shadow in that color use the text-shadow property, you can generate a text shadow directly with our [CSS Text Shadow Generator](#).

Here you see how black text with a 4 pixel #DD9CCE colored shadow looks like.

```
.shadow{ text-shadow: 4px 4px 2px #DD9CCE
}
```

Border

The CSS property to change the border of an element to Hex DD9CCE is called "border". The border property can be set on classes, ids or directly on the HTML element.

This example shows the color as border, it can be applied via the CSS property "border" or "border-color".

```
.border, #border, table{ border:4px solid
#DD9CCE }
```

If only the border color should be changed use the property `border-color`.

```
.border{ border-color:#DD9CCE }
```

If you want to add a box shadow in that color use:

Here you see how a box with a 4 pixel #DD9CCE colored shadow looks like.

```
.boxshadow{ -moz-box-shadow:4px 4px 4px  
4px #DD9CCE; -webkit-box-shadow:4px 4px  
4px 4px #DD9CCE; box-shadow:4px 4px 4px  
4px #DD9CCE }
```

Background

The CSS property to change the background color of an element to Hex DD9CCE is called "background". The background property can be set on classes, ids or directly on the HTML element.

```
.background, #background, body{  
background:#DD9CCE }
```

If only the background color should be changed can be used:

```
.background{ background-color:#DD9CCE }
```

This example shows the color as background, it is applied via the CSS property "background".

To optimize and compress your CSS code, you can use our [online CSS compressor and optimizer](#) based on csstidy. If you want to create a linear or radial gradient as background or border, check our [CSS Gradient Generator](#).

Hey! You found this booklet interesting? Support Converting Colors with the new Membership Option!

The pro membership hides all ads, plus gives you double the colors in the color bucket, and more awesome pro features!

[Learn more, Memberships starting at \\$2.50/m!](#)

**Follow me
on Twitter!**

@ConvertingColor