

Converting Colors

Hex(DDA7AE)

Have a look what the booklet for
Hex(DDA7AE) contains.

Hex(DDA7AE)	3
<i>Conversions</i>	4
<i>Details</i>	6
<i>Harmonies</i>	11
<i>Previews</i>	23
<i>Color Blindness Simulation</i>	26
<i>CSS Examples</i>	29

Color

Hex(DDA7AE)

Conversions

Conversions Part 1

Format	Color
Hex	DDA7AE
RGB	221, 167, 174
RGB Percent	87%, 65%, 68%
CMY	0.1333, 0.3451, 0.3176
CMYK	0.00, 0.24, 0.21, 0.13
HSL	352°, 44%, 76%
HSV	352°, 24%, 87%
XYZ	51.2775, 46.0656, 46.2333
YIQ	183.9440, 29.9370, 13.6250

Conversions

Conversions Part 2

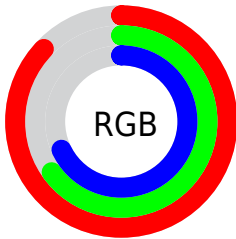
Format	Color
R_{YB}	221, 167, 174
Decimal	14526382
CIE _{Lab}	73.59, 20.88, 4.14
CIE _{LCh}	74, 21.287, 11.210
Yxy	46.0656, 0.3571, 0.3208
Android (android.graphics.Color)	4292716462 (0xFFDDA7AE)
YUV	183.9440, -4.9024, 32.4981
Hunter-Lab	67.8716, 16.0827, 7.1225

Details

The Hex color **DDA7AE** is a light color, and the websafe version is hex **CC9999**. A complement of this color would be **A7DDD6**, and the grayscale version is **B8B8B8**.

A 20% lighter version of the original color is **FFDEE5**, and **A5737A** is the 20% darker color. If you saturate the color by 10%, you get **DD919B**, and if you desaturate by 10%, it is **DDBDC1**.

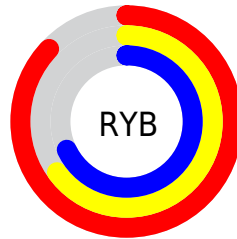
Distribution



Red (87%)

Green (65%)

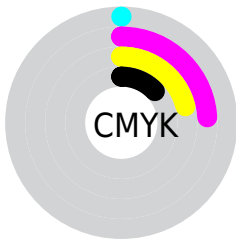
Blue (68%)



Red (87%)

Yellow (65%)

Blue (68%)

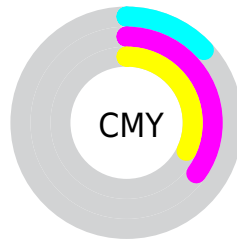


Cyan (0%)

Magenta (24%)

Yellow (21%)

Black (13%)



Cyan (13%)

Magenta (35%)

Yellow (32%)

Brightness & Saturation Gradients

These gradients show how the Hex color DDA7AE changes by changing the brightness by 10 percent. The first figure shows a shift by +10% for each color and the second figure -10%.

Similar to the brightness gradients but the following saturation gradients show a change of the Hex color DDA7AE by changing the saturation by 10% instead.

 DDA7AE

FFFFFF

 FFDEE5

 FFFBFF

 DDA7AE

 C18C93

 A5737A

 8A5A61

 704249

 562B33

 3E151E

 290004

 000000

 DDA7AE

 DDA7AE

 DD919B

 DDBDC1

 DD7B88

 DDD3D4

 DD6574

 DDE9E8

 DD4F61

 DDFFFB

 DD394E

 DDFFFF

 DD223B

 DD0C27

 DD001D

Harmonies

Analogous

The Analogous color harmony consists of three colors that are next to each other on the color wheel.



D4A8C2



DDA7AE



DBAA9C

Triad

The Triadic color harmony groups three colors that are evenly spaced from another and form a triangle on the color wheel.



DDA7AE



A6BB97



8FBAD9

Complementary

The Complementary color scheme is a pair of colors which are on the opposite of each other on the color wheel.



DDA7AE



A7DDD6

Split Complementary

Split-complementary colors differ from the complementary color scheme. The scheme consists of three colors, the original color and two neighbors of the complement color.



80BECE



DDA7AE



91BFA8

Square

The Square scheme is like the rectangle color scheme, but the four colors are evenly spaced on the color wheel.



DDA7AE



BCB68E



82C0BC



A8B4DB

Rectangle

The Rectangle color scheme consists of four colors that form a rectangle on the color wheel.



DDA7AE



D4AD93



82C0BC



89BCD6

Sweetspot

The Sweet Spot groups the original color and five complimentary colors.



DDA7AE



FFEDEF



D6A7DD



807577



000000



808080

Same Dimension

The Same Dimension uses a secret algorithm to generate beautiful new colors.



DDA7AE



FFB5BF



DDBBA7



6E6364



AD0016



2E0006

Inverse Universe

The Inverse Universe completely reimagines the original color for something new.



DDA7AE



FFB5BF



A7C9DD



6E6364



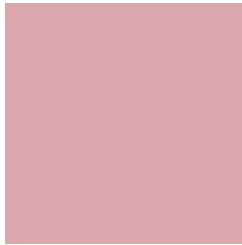
AD0016



2E0006

Previews

White Background



This preview shows how the Hex color DDA7AE looks on a white background.

Color Contrast Check

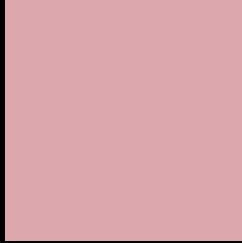
Large Text (above 18pt) WCAG AA × Fail

Any Text WCAG AA × Fail

Large Text (above 18pt) WCAG AAA × Fail

Any Text WCAG AAA × Fail

Black Background



This preview shows how the Hex color DDA7AE looks on a black background.

Color Contrast Check

Large Text (above 18pt) WCAG AA ✓ Pass

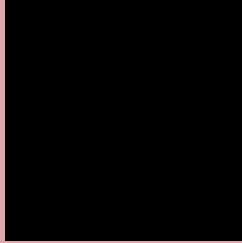
Any Text WCAG AA ✓ Pass

Large Text (above 18pt) WCAG AAA ✓ Pass

Any Text WCAG AAA ✓ Pass

If you want to check with other color combinations, try the [Color Contrast Checker](#).

Hex DDA7AE Background



This preview shows how black text looks on a background with the Hex color DDA7AE.

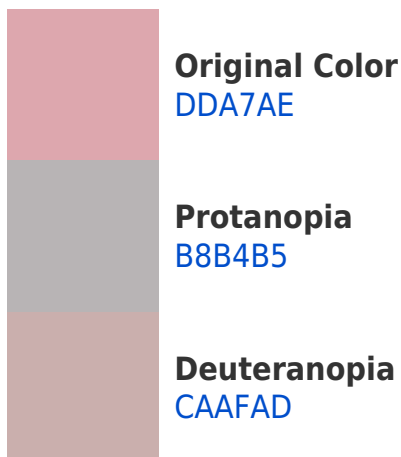


This preview shows how white text looks on a background with the Hex color DDA7AE.

Color Blindness Simulation

Color vision deficiency is a very complex topic, and I could not describe the different causes any better than Wikipedia does, so if you want to learn more, you should check out their [article about color blindness](#).

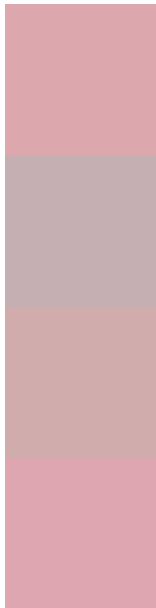
Dichromacy





Tritanopia
DEA6B3

Trichromacy



Original Color
DDA7AE

Protanomaly
C5AFB2

Deuteranomaly
D1ACAD

Tritanomaly
DEA6B1

Monochromacy



Original Color
DDA7AE

Achromatopsia
B8B8B8

Achromatomaly
C5B2B4

CSS Examples

Text

The CSS property to change the color of the text to Hex DDA7AE is called "color". The color property can be set on classes, ids or directly on the HTML element.

This example shows how text in the color #DDA7AE looks like.

```
.text, #text, p{  
    color:#DDA7AE  
}
```

If you want to add a text shadow in that color use the text-shadow property, you can generate a text shadow directly with our [CSS Text Shadow Generator](#).

Here you see how black text with a 4 pixel #DDA7AE colored shadow looks like.

```
.shadow{ text-shadow: 4px 4px 2px #DDA7AE
}
```

Border

The CSS property to change the border of an element to Hex DDA7AE is called "border". The border property can be set on classes, ids or directly on the HTML element.

This example shows the color as border, it can be applied via the CSS property "border" or "border-color".

```
.border, #border, table{ border:4px solid
#DDA7AE }
```

If only the border color should be changed use the property `border-color`.

```
.border{ border-color:#DDA7AE }
```

If you want to add a box shadow in that color use:

Here you see how a box with a 4 pixel #DDA7AE colored shadow looks like.

```
.boxshadow{ -moz-box-shadow:4px 4px 4px  
4px #DDA7AE; -webkit-box-shadow:4px 4px  
4px 4px #DDA7AE; box-shadow:4px 4px 4px  
4px #DDA7AE }
```

Background

The CSS property to change the background color of an element to Hex DDA7AE is called "background". The background property can be set on classes, ids or directly on the HTML element.

```
.background, #background, body{  
background:#DDA7AE }
```

If only the background color should be changed can be used:

```
.background{ background-color:#DDA7AE }
```

This example shows the color as background, it is applied via the CSS property "background".

To optimize and compress your CSS code, you can use our [online CSS compressor and optimizer](#) based on csstidy. If you want to create a linear or radial gradient as background or border, check our [CSS Gradient Generator](#).

Hey! You found this booklet interesting? Support Converting Colors with the new Membership Option!

The pro membership hides all ads, plus gives you double the colors in the color bucket, and more awesome pro features!

[Learn more, Memberships starting at \\$2.50/m!](#)

**Follow me
on Twitter!**

@ConvertingColor