

Converting Colors

Hex(DDA7B1)

Have a look what the booklet for
Hex(DDA7B1) contains.

Hex(DDA7B1)	3
<i>Conversions</i>	4
<i>Details</i>	6
<i>Harmonies</i>	11
<i>Previews</i>	23
<i>Color Blindness Simulation</i>	26
<i>CSS Examples</i>	29

Color

Hex(DDA7B1)

Conversions

Conversions Part 1

Format	Color
Hex	DDA7B1
RGB	221, 167, 177
RGB Percent	87%, 65%, 69%
CMY	0.1333, 0.3451, 0.3059
CMYK	0.00, 0.24, 0.20, 0.13
HSL	349°, 44%, 76%
HSV	349°, 24%, 87%
XYZ	51.5733, 46.1839, 47.7911
YIQ	184.2860, 28.9740, 14.5580

Conversions

Conversions Part 2

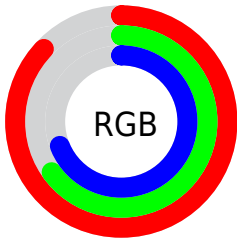
Format	Color
R _Y B	221, 167, 177
Decimal	14526385
CIE Lab	73.66, 21.33, 2.60
CIE LCh	74, 21.489, 6.951
Yxy	46.1839, 0.3543, 0.3173
Android (android.graphics.Color)	4292716465 (0xFFDDA7B1)
YUV	184.2860, -3.5920, 32.1982
Hunter-Lab	67.9587, 16.5344, 5.8762

Details

The Hex color **DDA7B1** is a light color, and the websafe version is hex **CC9999**. A complement of this color would be **A7DDD3**, and the grayscale version is **B8B8B8**.

A 20% lighter version of the original color is **FFDEE9**, and **A5737D** is the 20% darker color. If you saturate the color by 10%, you get **DD919F**, and if you desaturate by 10%, it is **DDBDC3**.

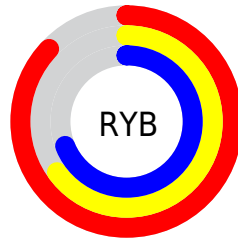
Distribution



Red (87%)

Green (65%)

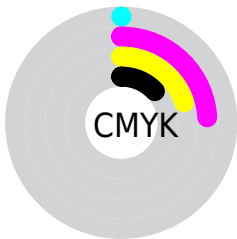
Blue (69%)



Red (87%)

Yellow (65%)

Blue (69%)

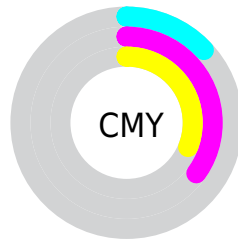


Cyan (0%)

Magenta (24%)

Yellow (20%)

Black (13%)



Cyan (13%)

Magenta (35%)

Yellow (31%)

Brightness & Saturation Gradients

These gradients show how the Hex color DDA7B1 changes by changing the brightness by 10 percent. The first figure shows a shift by +10% for each color and the second figure -10%.

Similar to the brightness gradients but the following saturation gradients show a change of the Hex color DDA7B1 by changing the saturation by 10% instead.

 DDA7B1

 DDA7B1

FFFFFF

 C18C96

 FFDEE9

 A5737D

 FFFBFF

 8A5A64

 70424C

 572B35

 3E1520

 290008

 000000

 DDA7B1

 DDA7B1

 DD919F

 DDBDC3

 DD7B8D

 DDD3D5

 DD657B

 DDE9E7

 DD4F69

 DDFFF9

 DD3957

 DDFFFF

 DD2245

 DD0C33

 DD0029

Harmonies

Analogous

The Analogous color harmony consists of three colors that are next to each other on the color wheel.



D3A9C5



DDA7B1



DCA99E

Triad

The Triadic color harmony groups three colors that are evenly spaced from another and form a triangle on the color wheel.



DDA7B1



A9BB95



8CBBD9

Complementary

The Complementary color scheme is a pair of colors which are on the opposite of each other on the color wheel.



DDA7B1



A7DDD3

Split Complementary

Split-complementary colors differ from the complementary color scheme. The scheme consists of three colors, the original color and two neighbors of the complement color.



7FBFCC



DDA7B1



93BFA5

Square

The Square scheme is like the rectangle color scheme, but the four colors are evenly spaced on the color wheel.



DDA7B1



BFB58E



83C0B9



A4B5DC

Rectangle

The Rectangle color scheme consists of four colors that form a rectangle on the color wheel.



DDA7B1



D6AD95



83C0B9



86BDD5

Sweetspot

The Sweet Spot groups the original color and five complimentary colors.



DDA7B1



FFEDF0



D2A7DD



807577



000000



808080

Same Dimension

The Same Dimension uses a secret algorithm to generate beautiful new colors.



DDA7B1



FFB5C3



DDB7A7



6E6365



AD0020



2E0008

Inverse Universe

The Inverse Universe completely reimagines the original color for something new.



DDA7B1



FFB5C3



A7CDDD



6E6365



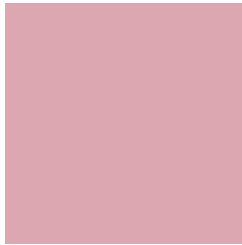
AD0020



2E0008

Previews

White Background



This preview shows how the Hex color DDA7B1 looks on a white background.

Color Contrast Check

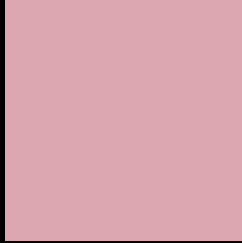
Large Text (above 18pt) WCAG AA × Fail

Any Text WCAG AA × Fail

Large Text (above 18pt) WCAG AAA × Fail

Any Text WCAG AAA × Fail

Black Background



This preview shows how the Hex color DDA7B1 looks on a black background.

Color Contrast Check

Large Text (above 18pt) WCAG AA ✓ Pass

Any Text WCAG AA ✓ Pass

Large Text (above 18pt) WCAG AAA ✓ Pass

Any Text WCAG AAA ✓ Pass

If you want to check with other color combinations, try the [Color Contrast Checker](#).

Hex DDA7B1 Background



This preview shows how black text looks on a background with the Hex color DDA7B1.

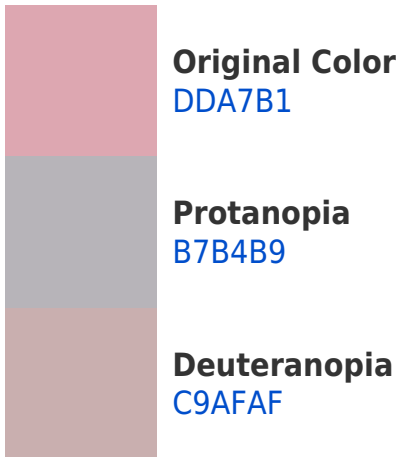


This preview shows how white text looks on a background with the Hex color DDA7B1.

Color Blindness Simulation

Color vision deficiency is a very complex topic, and I could not describe the different causes any better than Wikipedia does, so if you want to learn more, you should check out their [article about color blindness](#).

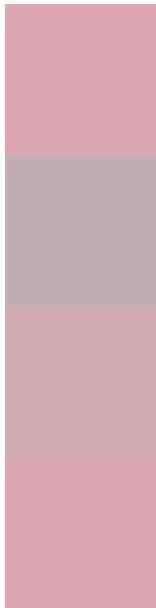
Dichromacy





Tritanopia
DDA7B3

Trichromacy



Original Color
DDA7B1

Protanomaly
C5AFB6

Deuteranomaly
D0ACB0

Tritanomaly
DDA7B2

Monochromacy



Original Color
DDA7B1

Achromatopsia
B8B8B8

Achromatomaly
C5B2B5

CSS Examples

Text

The CSS property to change the color of the text to Hex DDA7B1 is called "color". The color property can be set on classes, ids or directly on the HTML element.

This example shows how text in the color #DDA7B1 looks like.

```
.text, #text, p{  
    color:#DDA7B1  
}
```

If you want to add a text shadow in that color use the text-shadow property, you can generate a text shadow directly with our [CSS Text Shadow Generator](#).

Here you see how black text with a 4 pixel #DDA7B1 colored shadow looks like.

```
.shadow{ text-shadow: 4px 4px 2px #DDA7B1
}
```

Border

The CSS property to change the border of an element to Hex DDA7B1 is called "border". The border property can be set on classes, ids or directly on the HTML element.

This example shows the color as border, it can be applied via the CSS property "border" or "border-color".

```
.border, #border, table{ border:4px solid
#DDA7B1 }
```

If only the border color should be changed use the property `border-color`.

```
.border{ border-color:#DDA7B1 }
```

If you want to add a box shadow in that color use:

Here you see how a box with a 4 pixel #DDA7B1 colored shadow looks like.

```
.boxshadow{ -moz-box-shadow:4px 4px 4px  
4px #DDA7B1; -webkit-box-shadow:4px 4px  
4px 4px #DDA7B1; box-shadow:4px 4px 4px  
4px #DDA7B1 }
```

Background

The CSS property to change the background color of an element to Hex DDA7B1 is called "background". The background property can be set on classes, ids or directly on the HTML element.

```
.background, #background, body{  
background:#DDA7B1 }
```

If only the background color should be changed can be used:

```
.background{ background-color:#DDA7B1 }
```

This example shows the color as background, it is applied via the CSS property "background".

To optimize and compress your CSS code, you can use our [online CSS compressor and optimizer](#) based on csstidy. If you want to create a linear or radial gradient as background or border, check our [CSS Gradient Generator](#).

Hey! You found this booklet interesting? Support Converting Colors with the new Membership Option!

The pro membership hides all ads, plus gives you double the colors in the color bucket, and more awesome pro features!

[Learn more, Memberships starting at \\$2.50/m!](#)

**Follow me
on Twitter!**

@ConvertingColor