

Converting Colors

Hex(DDAF90)

Have a look what the booklet for
Hex(DDAF90) contains.

Hex(DDAF90)	3
<i>Conversions</i>	4
<i>Details</i>	6
<i>Harmonies</i>	11
<i>Previews</i>	23
<i>Color Blindness Simulation</i>	26
<i>CSS Examples</i>	29

Color

Hex(DDAF90)

Conversions

Conversions Part 1

Format	Color
Hex	DDAF90
RGB	221, 175, 144
RGB Percent	87%, 69%, 56%
CMY	0.1333, 0.3137, 0.4353
CMYK	0.00, 0.21, 0.35, 0.13
HSL	24°, 53%, 72%
HSV	24°, 35%, 87%
XYZ	50.1828, 48.0457, 33.0144
YIQ	185.2200, 37.3670, 0.1110

Conversions

Conversions Part 2

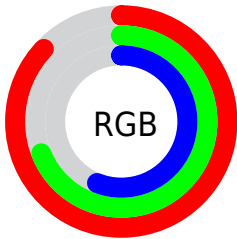
Format	Color
R _Y B	221, 196, 144
Decimal	14528400
CIE Lab	74.85, 12.51, 22.28
CIE LCh	75, 25.552, 60.693
Yxy	48.0457, 0.3824, 0.3661
Android (android.graphics.Color)	4292718480 (0xFFDDAF90)
YUV	185.2200, -20.3215, 31.3791
Hunter-Lab	69.3150, 7.9295, 20.2810

Details

The Hex color **DDAF90** is a light color, and the websafe version is hex **CC9966**. A complement of this color would be **90BEDD**, and the grayscale version is **B9B9B9**.

A 20% lighter version of the original color is **FFE7C6**, and **A57B5D** is the 20% darker color. If you saturate the color by 10%, you get **DDA27A**, and if you desaturate by 10%, it is **DDBCA6**.

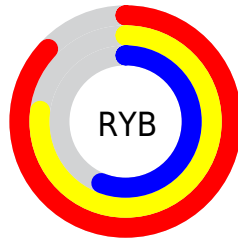
Distribution



Red (87%)

Green (69%)

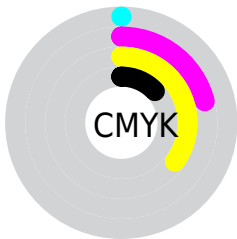
Blue (56%)



Red (87%)

Yellow (77%)

Blue (56%)

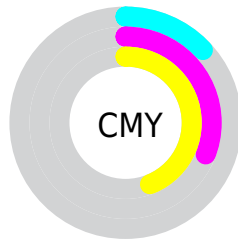


Cyan (0%)

Magenta (21%)

Yellow (35%)

Black (13%)



Cyan (13%)

Magenta (31%)

Yellow (44%)

Brightness & Saturation Gradients

These gradients show how the Hex color DDAF90 changes by changing the brightness by 10 percent. The first figure shows a shift by +10% for each color and the second figure -10%.

Similar to the brightness gradients but the following saturation gradients show a change of the Hex color DDAF90 by changing the saturation by 10% instead.

 DDAF90

FFFFFF

 FFE7C6

 FFFF E2

 DDAF90

 C09476

 A57B5D

 896246

 6F4A2F

 553319

 3C1E00

 250700

 000000

 DDAF90

 DDAF90

 DDA27A

 DDBCA6

 DD9564

 DDC9BC

 DD874E

 DDD7D2

 DD7A38

 DDE4E8

 DD6D21

 DDF1FF

 DD600B

 DDFFEF

 DD5900

 DDFFFF

Harmonies

Analogous

The Analogous color harmony consists of three colors that are next to each other on the color wheel.



E8A9A1



DDAF90



C9B789

Triad

The Triadic color harmony groups three colors that are evenly spaced from another and form a triangle on the color wheel.



DDAF90



7EC6B8



BDB2E1

Complementary

The Complementary color scheme is a pair of colors which are on the opposite of each other on the color wheel.



DDAF90



90BEDD

Split Complementary

Split-complementary colors differ from the complementary color scheme. The scheme consists of three colors, the original color and two neighbors of the complement color.



9CBAE7



DDAF90



74C5CF

Square

The Square scheme is like the rectangle color scheme, but the four colors are evenly spaced on the color wheel.



DDAF90



95C3A1



80C1E0



D7ABD0

Rectangle

The Rectangle color scheme consists of four colors that form a rectangle on the color wheel.



DDAF90



B9BC8C



80C1E0



B2B5E4

Sweetspot

The Sweet Spot groups the original color and five complimentary colors.



DDAF90



FFF0E6



DD90BE



807670



000000



808080

Same Dimension

The Same Dimension uses a secret algorithm to generate beautiful new colors.



DDAF90



FFBF94



DDD590



6E6763



AD4600



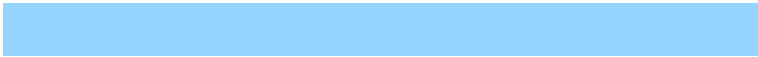
2E1200

Inverse Universe

The Inverse Universe completely reimagines the original color for something new.



90BEDD



94D4FF



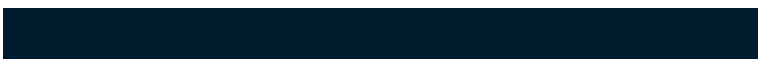
9098DD



63696E



0068AD



001B2E

Previews

White Background



This preview shows how the Hex color DDAF90 looks on a white background.

Color Contrast Check

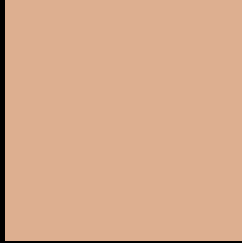
Large Text (above 18pt) WCAG AA × Fail

Any Text WCAG AA × Fail

Large Text (above 18pt) WCAG AAA × Fail

Any Text WCAG AAA × Fail

Black Background



This preview shows how the Hex color DDAF90 looks on a black background.

Color Contrast Check

Large Text (above 18pt) WCAG AA ✓ Pass

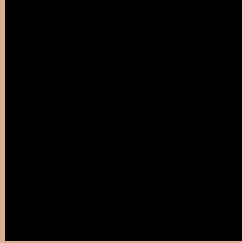
Any Text WCAG AA ✓ Pass

Large Text (above 18pt) WCAG AAA ✓ Pass

Any Text WCAG AAA ✓ Pass

If you want to check with other color combinations, try the [Color Contrast Checker](#).

Hex DDAF90 Background



This preview shows how black text looks on a background with the Hex color DDAF90.

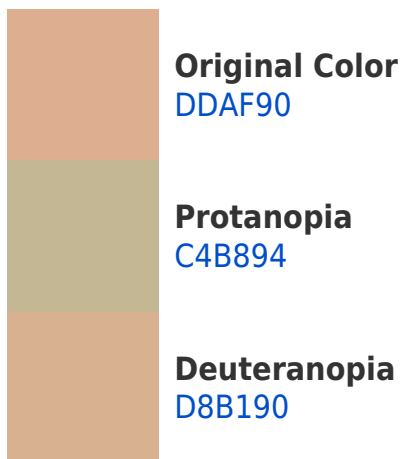


This preview shows how white text looks on a background with the Hex color DDAF90.

Color Blindness Simulation

Color vision deficiency is a very complex topic, and I could not describe the different causes any better than Wikipedia does, so if you want to learn more, you should check out their [article about color blindness](#).

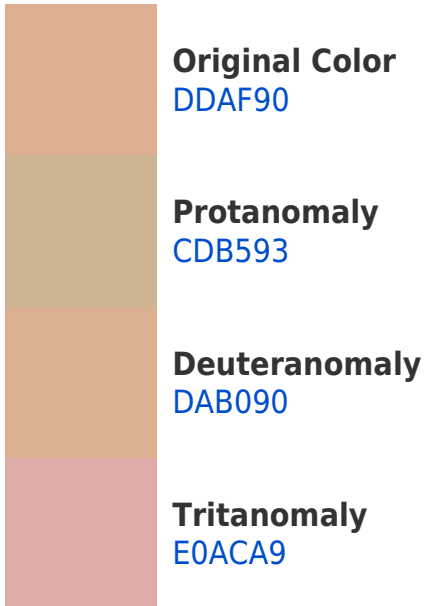
Dichromacy





Tritanopia
E1AAB7

Trichromacy



Monochromacy



CSS Examples

Text

The CSS property to change the color of the text to Hex DDAF90 is called "color". The color property can be set on classes, ids or directly on the HTML element.

This example shows how text in the color #DDAF90 looks like.

```
.text, #text, p{  
    color:#DDAF90  
}
```

If you want to add a text shadow in that color use the text-shadow property, you can generate a text shadow directly with our [CSS Text Shadow Generator](#).

Here you see how black text with a 4 pixel #DDAF90 colored shadow looks like.

```
.shadow{ text-shadow: 4px 4px 2px #DDAF90
}
```

Border

The CSS property to change the border of an element to Hex DDAF90 is called "border". The border property can be set on classes, ids or directly on the HTML element.

This example shows the color as border, it can be applied via the CSS property "border" or "border-color".

```
.border, #border, table{ border:4px solid
#DDAF90 }
```

If only the border color should be changed use the property `border-color`.

```
.border{ border-color:#DDAF90 }
```

If you want to add a box shadow in that color use:

Here you see how a box with a 4 pixel #DDAF90 colored shadow looks like.

```
.boxshadow{ -moz-box-shadow:4px 4px 4px  
4px #DDAF90; -webkit-box-shadow:4px 4px  
4px 4px #DDAF90; box-shadow:4px 4px 4px  
4px #DDAF90 }
```

Background

The CSS property to change the background color of an element to Hex DDAF90 is called "background". The background property can be set on classes, ids or directly on the HTML element.

```
.background, #background, body{  
background:#DDAF90 }
```

If only the background color should be changed can be used:

```
.background{ background-color:#DDAF90 }
```

This example shows the color as background, it is applied via the CSS property "background".

To optimize and compress your CSS code, you can use our [online CSS compressor and optimizer](#) based on csstidy. If you want to create a linear or radial gradient as background or border, check our [CSS Gradient Generator](#).

Hey! You found this booklet interesting? Support Converting Colors with the new Membership Option!

The pro membership hides all ads, plus gives you double the colors in the color bucket, and more awesome pro features!

[Learn more, Memberships starting at \\$2.50/m!](#)

**Follow me
on Twitter!**

@ConvertingColor