

Converting Colors

Hex(DDB8BA)

Have a look what the booklet for
Hex(DDB8BA) contains.

Hex(DDB8BA)	3
<i>Conversions</i>	4
<i>Details</i>	6
<i>Harmonies</i>	11
<i>Previews</i>	23
<i>Color Blindness Simulation</i>	26
<i>CSS Examples</i>	29

Color

Hex(DDB8BA)

Conversions

Conversions Part 1

Format	Color
Hex	DDB8BA
RGB	221, 184, 186
RGB Percent	87%, 72%, 73%
CMY	0.1333, 0.2784, 0.2706
CMYK	0.00, 0.17, 0.16, 0.13
HSL	357°, 35%, 79%
HSV	357°, 17%, 87%
XYZ	55.8222, 53.1983, 53.7805
YIQ	195.2910, 21.4100, 8.4660

Conversions

Conversions Part 2

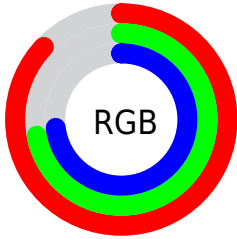
Format	Color
RYB	221, 184, 186
Decimal	14530746
CIELab	77.99, 13.58, 3.96
CIELCh	78, 14.150, 16.252
Yxy	53.1983, 0.3429, 0.3268
Android (android.graphics.Color)	4292720826 (0xFFDDB8BA)
YUV	195.2910, -4.5805, 22.5468
Hunter-Lab	72.9372, 8.9743, 7.3383

Details

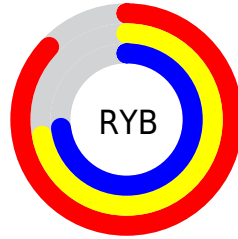
The Hex color **DDB8BA** is a light color, and the websafe version is hex **FFCCCC**. A complement of this color would be **B8DDDB**, and the grayscale version is **C3C3C3**.

A 20% lighter version of the original color is **FFF0F2**, and **A68385** is the 20% darker color. If you saturate the color by 10%, you get **DDA2A5**, and if you desaturate by 10%, it is **DDCECF**.

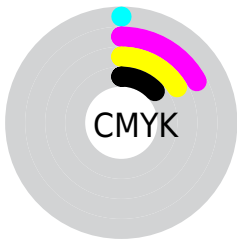
Distribution



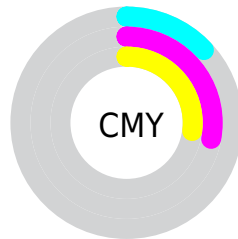
- Red (87%)
- Green (72%)
- Blue (73%)



- Red (87%)
- Yellow (72%)
- Blue (73%)



- Cyan (0%)
- Magenta (17%)
- Yellow (16%)
- Black (13%)



- Cyan (13%)
- Magenta (28%)
- Yellow (27%)

Brightness & Saturation Gradients

These gradients show how the Hex color DDB8BA changes by changing the brightness by 10 percent. The first figure shows a shift by +10% for each color and the second figure -10%.

Similar to the brightness gradients but the following saturation gradients show a change of the Hex color DDB8BA by changing the saturation by 10% instead.

 DDB8BA

FFFFFF


 FFF0F2

 DDB8BA

 C19D9F

 A68385

 8B6A6C

 715154

 583A3C

 402427

 291012

 0D0000

 000000

 DDB8BA

 DDB8BA

 DDA2A5

 DDCECF

 DD8C90

 DDE4E4

 DD767B

 DDFAF9

 DD6066

 DDFFFF

 DD4A51

 DD333D

 DD1D28

 DD0713

 DD000C

Harmonies

Analogous

The Analogous color harmony consists of three colors that are next to each other on the color wheel.



D8B8C7



DDB8BA



DBBAAE

Triad

The Triadic color harmony groups three colors that are evenly spaced from another and form a triangle on the color wheel.



DDB8BA



B5C6AE



ACC4DA

Complementary

The Complementary color scheme is a pair of colors which are on the opposite of each other on the color wheel.



DDB8BA



B8DDDB

Split Complementary

Split-complementary colors differ from the complementary color scheme. The scheme consists of three colors, the original color and two neighbors of the complement color.



A1C7D3



DDB8BA



A7C8BA

Square

The Square scheme is like the rectangle color scheme, but the four colors are evenly spaced on the color wheel.



DDB8BA



C4C2A8



A0C9C8



BCC0DA

Rectangle

The Rectangle color scheme consists of four colors that form a rectangle on the color wheel.



DDB8BA



D5BCA9



A0C9C8



A7C5D8

Sweetspot

The Sweet Spot groups the original color and five complimentary colors.



DDB8BA



FFF2F3



DBB8DD



807878



000000



808080

Same Dimension

The Same Dimension uses a secret algorithm to generate beautiful new colors.



DDB8BA



FFCCCF



DDC8B8



6E6363



AD0009



2E0002

Inverse Universe

The Inverse Universe completely reimagines the original color for something new.



DDB8BA



FFCCCF



B8CDDD



6E6363



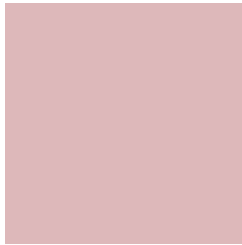
AD0009



2E0002

Previews

White Background



This preview shows how the Hex color DDB8BA looks on a white background.

Color Contrast Check

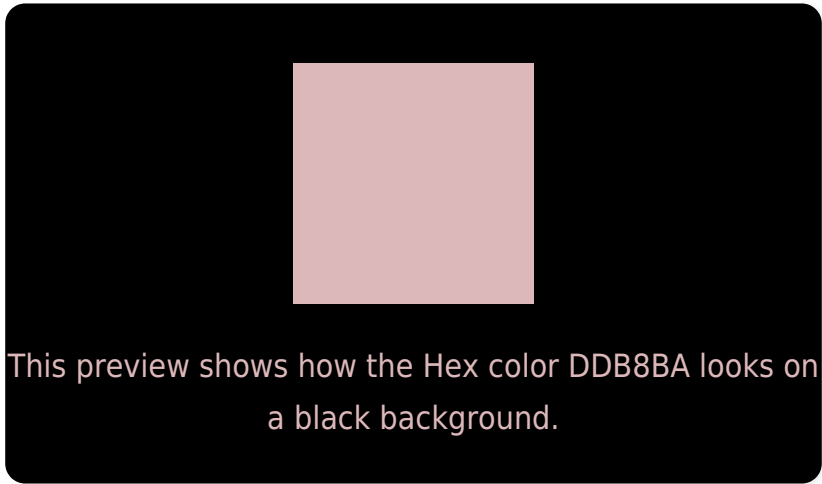
Large Text (above 18pt) WCAG AA × Fail

Any Text WCAG AA × Fail

Large Text (above 18pt) WCAG AAA × Fail

Any Text WCAG AAA × Fail

Black Background



Color Contrast Check

Large Text (above 18pt) WCAG AA ✓ Pass

Any Text WCAG AA ✓ Pass

Large Text (above 18pt) WCAG AAA ✓ Pass

Any Text WCAG AAA ✓ Pass

If you want to check with other color combinations, try the [Color Contrast Checker](#).

Hex DDB8BA Background



This preview shows how black text looks on a background with the Hex color DDB8BA.

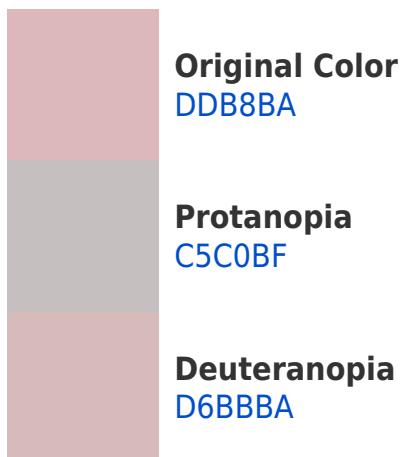


This preview shows how white text looks on a background with the Hex color DDB8BA.

Color Blindness Simulation

Color vision deficiency is a very complex topic, and I could not describe the different causes any better than Wikipedia does, so if you want to learn more, you should check out their [article about color blindness](#).

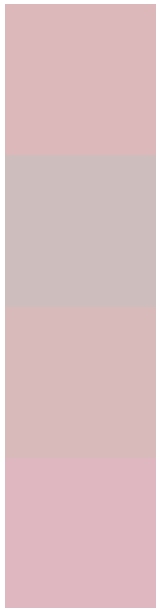
Dichromacy





Tritanopia
DEB6C5

Trichromacy



Original Color
DDB8BA

Protanomaly
CEBDBD

Deuteranomaly
D9BABA

Tritanomaly
DEB7C1

Monochromacy



Original Color
DDB8BA

Achromatopsia
C3C3C3

Achromatomaly
CCBFC0

CSS Examples

Text

The CSS property to change the color of the text to Hex DDB8BA is called "color". The color property can be set on classes, ids or directly on the HTML element.

This example shows how text in the color #DDB8BA looks like.

```
.text, #text, p{  
    color:#DDB8BA  
}
```

If you want to add a text shadow in that color use the text-shadow property, you can generate a text shadow directly with our [CSS Text Shadow Generator](#).

Here you see how black text with a 4 pixel #DDB8BA colored shadow looks like.

```
.shadow{ text-shadow: 4px 4px 2px #DDB8BA
}
```

Border

The CSS property to change the border of an element to Hex DDB8BA is called "border". The border property can be set on classes, ids or directly on the HTML element.

This example shows the color as border, it can be applied via the CSS property "border" or "border-color".

```
.border, #border, table{ border:4px solid
#DDB8BA }
```

If only the border color should be changed use the property `border-color`.

```
.border{ border-color:#DDB8BA }
```

If you want to add a box shadow in that color use:

Here you see how a box with a 4 pixel #DDB8BA colored shadow looks like.

```
.boxshadow{ -moz-box-shadow:4px 4px 4px  
4px #DDB8BA; -webkit-box-shadow:4px 4px  
4px 4px #DDB8BA; box-shadow:4px 4px 4px  
4px #DDB8BA }
```

Background

The CSS property to change the background color of an element to Hex DDB8BA is called "background". The background property can be set on classes, ids or directly on the HTML element.

```
.background, #background, body{  
background:#DDB8BA }
```

If only the background color should be changed can be used:

```
.background{ background-color:#DDB8BA }
```

This example shows the color as background, it is applied via the CSS property "background".

To optimize and compress your CSS code, you can use our [online CSS compressor and optimizer](#) based on csstidy. If you want to create a linear or radial gradient as background or border, check our [CSS Gradient Generator](#).

Hey! You found this booklet interesting? Support Converting Colors with the new Membership Option!

The pro membership hides all ads, plus gives you double the colors in the color bucket, and more awesome pro features!

[Learn more, Memberships starting at \\$2.50/m!](#)

**Follow me
on Twitter!**

@ConvertingColor