

Converting Colors

Hex(DDB9B3)

Have a look what the booklet for
Hex(DDB9B3) contains.

Hex(DDB9B3)	3
<i>Conversions</i>	4
<i>Details</i>	6
<i>Harmonies</i>	11
<i>Previews</i>	23
<i>Color Blindness Simulation</i>	26
<i>CSS Examples</i>	29

Color

Hex(DDB9B3)

Conversions

Conversions Part 1

Format	Color
Hex	DDB9B3
RGB	221, 185, 179
RGB Percent	87%, 73%, 70%
CMY	0.1333, 0.2745, 0.2980
CMYK	0.00, 0.16, 0.19, 0.13
HSL	9°, 38%, 78%
HSV	9°, 19%, 87%
XYZ	55.3044, 53.3247, 50.0257
YIQ	195.0800, 23.3820, 5.7660

Conversions

Conversions Part 2

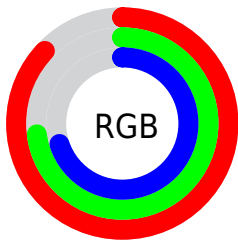
Format	Color
R _Y B	221, 186, 179
Decimal	14530995
CIE Lab	78.07, 11.97, 7.86
CIE LCh	78, 14.314, 33.290
Yxy	53.3247, 0.3486, 0.3361
Android (android.graphics.Color)	4292721075 (0xFFDDB9B3)
YUV	195.0800, -7.9274, 22.7318
Hunter-Lab	73.0238, 7.3950, 10.4995

Details

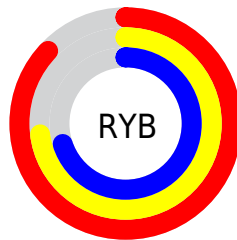
The Hex color **DDB9B3** is a light color, and the websafe version is hex **FFCCCC**. A complement of this color would be **B3D7DD**, and the grayscale version is **C3C3C3**.

A 20% lighter version of the original color is **FFF1EB**, and **A5847E** is the 20% darker color. If you saturate the color by 10%, you get **DDA69D**, and if you desaturate by 10%, it is **DDCCC9**.

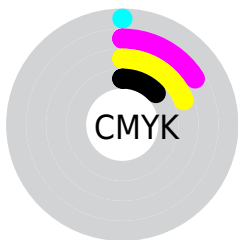
Distribution



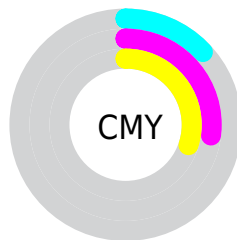
- Red (87%)
- Green (73%)
- Blue (70%)



- Red (87%)
- Yellow (73%)
- Blue (70%)



- Cyan (0%)
- Magenta (16%)
- Yellow (19%)
- Black (13%)



- Cyan (13%)
- Magenta (27%)
- Yellow (30%)

Brightness & Saturation Gradients

These gradients show how the Hex color DDB9B3 changes by changing the brightness by 10 percent. The first figure shows a shift by +10% for each color and the second figure -10%.

Similar to the brightness gradients but the following saturation gradients show a change of the Hex color DDB9B3 by changing the saturation by 10% instead.

 DDB9B3

 DDB9B3


FFFFFF

 C19E98

 FFF1EB

 A5847E

 8B6B65

 71524D

 583B37

 402521

 29110B

 090000

 000000

 DDB9B3

 DDB9B3

 DDA69D

 DDCCC9

 DD9387

 DDDDFD

 DD8071

 DDF2F5

 DD6D5B

 DDFFFF

 DD5A45

 DD472E

 DD3418

 DD2102

 DD2000

Harmonies

Analogous

The Analogous color harmony consists of three colors that are next to each other on the color wheel.



DCB8C0



DDB9B3



D6BCAA

Triad

The Triadic color harmony groups three colors that are evenly spaced from another and form a triangle on the color wheel.



DDB9B3



ADC8B5



B5C2DB

Complementary

The Complementary color scheme is a pair of colors which are on the opposite of each other on the color wheel.



DDB9B3



B3D7DD

Split Complementary

Split-complementary colors differ from the complementary color scheme. The scheme consists of three colors, the original color and two neighbors of the complement color.



A6C6D8



DDB9B3



A2C9C2

Square

The Square scheme is like the rectangle color scheme, but the four colors are evenly spaced on the color wheel.



DDB9B3



BBC5AB



9FC8CF



C6BDD7

Rectangle

The Rectangle color scheme consists of four colors that form a rectangle on the color wheel.



DDB9B3



CFBFA7



9FC8CF



AFC3DB

Sweetspot

The Sweet Spot groups the original color and five complimentary colors.



DDB9B3



FFF2F0



DDB3D7



807877



000000



808080

Same Dimension

The Same Dimension uses a secret algorithm to generate beautiful new colors.



DDB9B3



FFCDC4



DDCEB3



6E6463



AD1900



2E0700

Inverse Universe

The Inverse Universe completely reimagines the original color for something new.



B3D7DD



C4F7FF



B3C2DD



636C6E



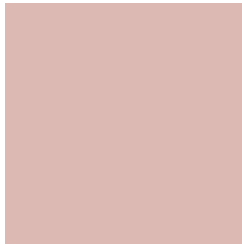
0095AD



00272E

Previews

White Background



This preview shows how the Hex color DDB9B3 looks on a white background.

Color Contrast Check

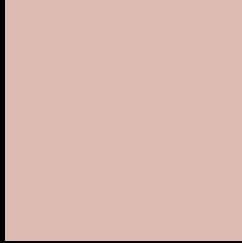
Large Text (above 18pt) WCAG AA × Fail

Any Text WCAG AA × Fail

Large Text (above 18pt) WCAG AAA × Fail

Any Text WCAG AAA × Fail

Black Background



This preview shows how the Hex color DDB9B3 looks on a black background.

Color Contrast Check

Large Text (above 18pt) WCAG AA ✓ Pass

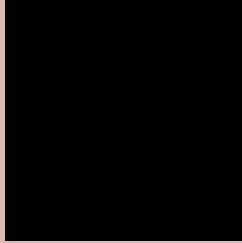
Any Text WCAG AA ✓ Pass

Large Text (above 18pt) WCAG AAA ✓ Pass

Any Text WCAG AAA ✓ Pass

If you want to check with other color combinations, try the [Color Contrast Checker](#).

Hex DDB9B3 Background



This preview shows how black text looks on a background with the Hex color DDB9B3.

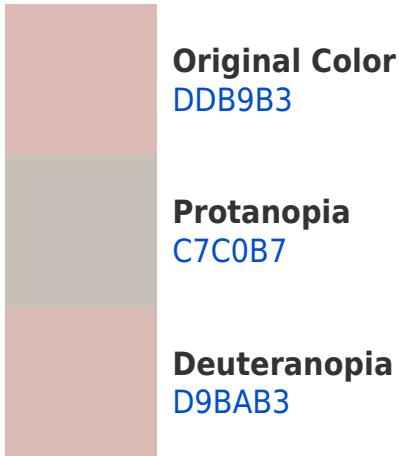


This preview shows how white text looks on a background with the Hex color DDB9B3.

Color Blindness Simulation

Color vision deficiency is a very complex topic, and I could not describe the different causes any better than Wikipedia does, so if you want to learn more, you should check out their [article about color blindness](#).

Dichromacy





Tritanopia
DFB6C5

Trichromacy



Original Color
DDB9B3

Protanomaly
CFBDB6

Deuteranomaly
DABAB3

Tritanomaly
DEB7BE

Monochromacy



Original Color
DDB9B3

Achromatopsia
C3C3C3

Achromatomaly
CCBFBD

CSS Examples

Text

The CSS property to change the color of the text to Hex DDB9B3 is called "color". The color property can be set on classes, ids or directly on the HTML element.

This example shows how text in the color #DDB9B3 looks like.

```
.text, #text, p{  
  color:#DDB9B3  
}
```

If you want to add a text shadow in that color use the text-shadow property, you can generate a text shadow directly with our [CSS Text Shadow Generator](#).

Here you see how black text with a 4 pixel #DDB9B3 colored shadow looks like.

```
.shadow{ text-shadow: 4px 4px 2px #DDB9B3
}
```

Border

The CSS property to change the border of an element to Hex DDB9B3 is called "border". The border property can be set on classes, ids or directly on the HTML element.

This example shows the color as border, it can be applied via the CSS property "border" or "border-color".

```
.border, #border, table{ border:4px solid
#DDB9B3 }
```

If only the border color should be changed use the property `border-color`.

```
.border{ border-color:#DDB9B3 }
```

If you want to add a box shadow in that color use:

Here you see how a box with a 4 pixel #DDB9B3 colored shadow looks like.

```
.boxshadow{ -moz-box-shadow:4px 4px 4px  
4px #DDB9B3; -webkit-box-shadow:4px 4px  
4px 4px #DDB9B3; box-shadow:4px 4px 4px  
4px #DDB9B3 }
```

Background

The CSS property to change the background color of an element to Hex DDB9B3 is called "background". The background property can be set on classes, ids or directly on the HTML element.

```
.background, #background, body{  
background:#DDB9B3 }
```

If only the background color should be changed can be used:

```
.background{ background-color:#DDB9B3 }
```

This example shows the color as background, it is applied via the CSS property "background".

To optimize and compress your CSS code, you can use our [online CSS compressor and optimizer](#) based on csstidy. If you want to create a linear or radial gradient as background or border, check our [CSS Gradient Generator](#).

Hey! You found this booklet interesting? Support Converting Colors with the new Membership Option!

The pro membership hides all ads, plus gives you double the colors in the color bucket, and more awesome pro features!

[Learn more, Memberships starting at \\$2.50/m!](#)

**Follow me
on Twitter!**

@ConvertingColor