

Converting Colors

Hex(DDBC9B)

Have a look what the booklet for
Hex(DDBC9B) contains.

Hex(DDBC9B)	3
<i>Conversions</i>	4
<i>Details</i>	6
<i>Harmonies</i>	11
<i>Previews</i>	23
<i>Color Blindness Simulation</i>	26
<i>CSS Examples</i>	29

Color

Hex(DDBC9B)

Conversions

Conversions Part 1

Format	Color
Hex	DDBC9B
RGB	221, 188, 155
RGB Percent	87%, 74%, 61%
CMY	0.1333, 0.2627, 0.3922
CMYK	0.00, 0.15, 0.30, 0.13
HSL	30°, 49%, 74%
HSV	30°, 30%, 87%
XYZ	53.7184, 53.7051, 38.5452
YIQ	194.1050, 30.2610, -3.2670

Conversions

Conversions Part 2

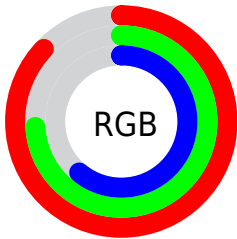
Format	Color
R _Y B	221, 221, 155
Decimal	14531739
CIE Lab	78.29, 6.97, 21.09
CIE LCh	78, 22.210, 71.698
Yxy	53.7051, 0.3680, 0.3679
Android (android.graphics.Color)	4292721819 (0xFFDDBC9B)
YUV	194.1050, -19.2788, 23.5869
Hunter-Lab	73.2838, 2.5972, 20.1138

Details

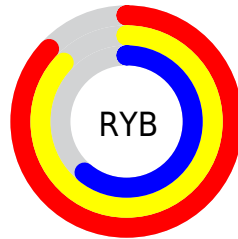
The Hex color **DDBC9B** is a light color, and the websafe version is hex **FFCC99**. A complement of this color would be **9BBCDD**, and the grayscale version is **C2C2C2**.

A 20% lighter version of the original color is **FFF4D2**, and **A58768** is the 20% darker color. If you saturate the color by 10%, you get **DDB185**, and if you desaturate by 10%, it is **DDC7B1**.

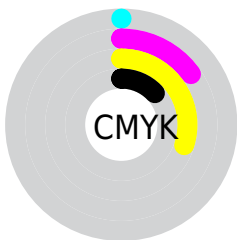
Distribution



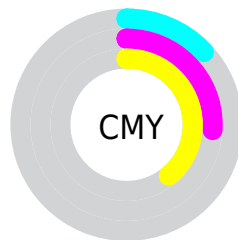
- Red (87%)
- Green (74%)
- Blue (61%)



- Red (87%)
- Yellow (87%)
- Blue (61%)



- Cyan (0%)
- Magenta (15%)
- Yellow (30%)
- Black (13%)



- Cyan (13%)
- Magenta (26%)
- Yellow (39%)

Brightness & Saturation Gradients

These gradients show how the Hex color DDBC9B changes by changing the brightness by 10 percent. The first figure shows a shift by +10% for each color and the second figure -10%.

Similar to the brightness gradients but the following saturation gradients show a change of the Hex color DDBC9B by changing the saturation by 10% instead.

 DDBC9B

 DDBC9B

FFFFFF

 C1A181

 FFF4D2

 A58768

 FFFFEE

 8A6E4F

 705538

 563E22

 3E280D

 271400

 000000

 DDBC9B

 DDBC9B

 DDB185

 DDC7B1

 DDA66F

 DDD2C7

 DD9B59

 DDDDDD

 DD9043

 DDE8F3

 DD852C

 DDF3FF

 DD7A16

 DDFFEF

 DD6F00

 DDFFFF

Harmonies

Analogous

The Analogous color harmony consists of three colors that are next to each other on the color wheel.



EAB6A7



DDBC9B



C9C399

Triad

The Triadic color harmony groups three colors that are evenly spaced from another and form a triangle on the color wheel.



DDBC9B



8CCEC9



CFBAE1

Complementary

The Complementary color scheme is a pair of colors which are on the opposite of each other on the color wheel.



DDBC9B



9BBCDD

Split Complementary

Split-complementary colors differ from the complementary color scheme. The scheme consists of three colors, the original color and two neighbors of the complement color.



B5C1EA



DDBC9B



8ACDCD

Square

The Square scheme is like the rectangle color scheme, but the four colors are evenly spaced on the color wheel.



DDBC9B



9BCDB4



9AC7E8



E3B5CF

Rectangle

The Rectangle color scheme consists of four colors that form a rectangle on the color wheel.



DDBC9B



BAC79E



9AC7E8



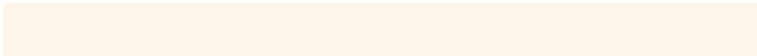
C7BCE5

Sweetspot

The Sweet Spot groups the original color and five complimentary colors.



DDBC9B



FFF4E8



DD9BBC



807871



000000



808080

Same Dimension

The Same Dimension uses a secret algorithm to generate beautiful new colors.



DDBC9B



FFD1A3



DDDD9B



6E6863



AD5700



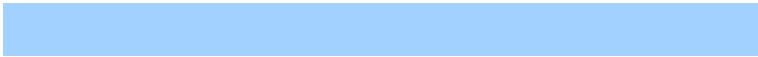
2E1700

Inverse Universe

The Inverse Universe completely reimagines the original color for something new.



9BBCDD



A3D1FF



9B9BDD



63686E



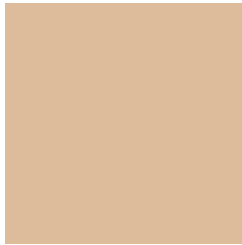
0057AD



00172E

Previews

White Background



This preview shows how the Hex color DDBC9B looks on a white background.

Color Contrast Check

Large Text (above 18pt) WCAG AA × Fail

Any Text WCAG AA × Fail

Large Text (above 18pt) WCAG AAA × Fail

Any Text WCAG AAA × Fail

Black Background



This preview shows how the Hex color DDBC9B looks on a black background.

Color Contrast Check

Large Text (above 18pt) WCAG AA ✓ Pass

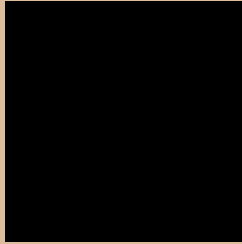
Any Text WCAG AA ✓ Pass

Large Text (above 18pt) WCAG AAA ✓ Pass

Any Text WCAG AAA ✓ Pass

If you want to check with other color combinations, try the [Color Contrast Checker](#).

Hex DDBC9B Background



This preview shows how black text looks on a background with the Hex color DDBC9B.

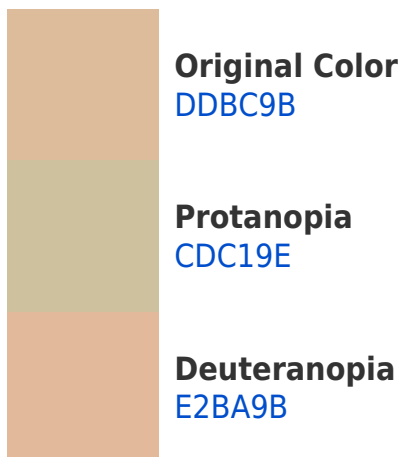


This preview shows how white text looks on a background with the Hex color DDBC9B.

Color Blindness Simulation

Color vision deficiency is a very complex topic, and I could not describe the different causes any better than Wikipedia does, so if you want to learn more, you should check out their [article about color blindness](#).

Dichromacy



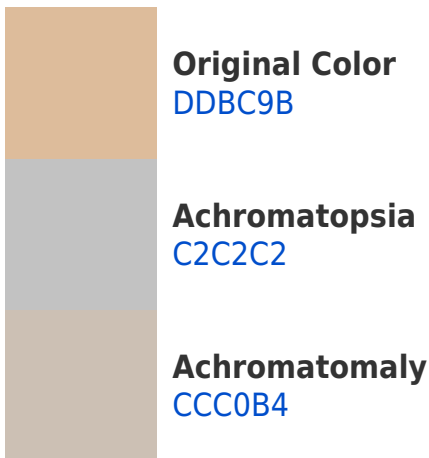


Tritanopia
E2B6C4

Trichromacy



Monochromacy



CSS Examples

Text

The CSS property to change the color of the text to Hex DDBC9B is called "color". The color property can be set on classes, ids or directly on the HTML element.

This example shows how text in the color #DDBC9B looks like.

```
.text, #text, p{  
    color:#DDBC9B  
}
```

If you want to add a text shadow in that color use the text-shadow property, you can generate a text shadow directly with our [CSS Text Shadow Generator](#).

Here you see how black text with a 4 pixel #DDBC9B colored shadow looks like.

```
.shadow{ text-shadow: 4px 4px 2px #DDBC9B
}
```

Border

The CSS property to change the border of an element to Hex DDBC9B is called "border". The border property can be set on classes, ids or directly on the HTML element.

This example shows the color as border, it can be applied via the CSS property "border" or "border-color".

```
.border, #border, table{ border:4px solid
#DDBC9B }
```

If only the border color should be changed use the property `border-color`.

```
.border{ border-color:#DDBC9B }
```

If you want to add a box shadow in that color use:

Here you see how a box with a 4 pixel #DDBC9B colored shadow looks like.

```
.boxshadow{ -moz-box-shadow:4px 4px 4px  
4px #DDBC9B; -webkit-box-shadow:4px 4px  
4px 4px #DDBC9B; box-shadow:4px 4px 4px  
4px #DDBC9B }
```

Background

The CSS property to change the background color of an element to Hex DDBC9B is called "background". The background property can be set on classes, ids or directly on the HTML element.

```
.background, #background, body{  
background:#DDBC9B }
```

If only the background color should be changed can be used:

```
.background{ background-color:#DDBC9B }
```

This example shows the color as background, it is applied via the CSS property "background".

To optimize and compress your CSS code, you can use our [online CSS compressor and optimizer](#) based on csstidy. If you want to create a linear or radial gradient as background or border, check our [CSS Gradient Generator](#).

Hey! You found this booklet interesting? Support Converting Colors with the new Membership Option!

The pro membership hides all ads, plus gives you double the colors in the color bucket, and more awesome pro features!

[Learn more, Memberships starting at \\$2.50/m!](#)

**Follow me
on Twitter!**

@ConvertingColor