

Converting Colors

Hex(DDBCC3)

Have a look what the booklet for
Hex(DDBCC3) contains.

Hex(DDBCC3)	3
<i>Conversions</i>	4
<i>Details</i>	6
<i>Harmonies</i>	11
<i>Previews</i>	23
<i>Color Blindness Simulation</i>	26
<i>CSS Examples</i>	29

Color

Hex(DDBC3)

Conversions

Conversions Part 1

Format	Color
Hex	DDBCC3
RGB	221, 188, 195
RGB Percent	87%, 74%, 76%
CMY	0.1333, 0.2627, 0.2353
CMYK	0.00, 0.15, 0.12, 0.13
HSL	347°, 33%, 80%
HSV	347°, 15%, 87%
XYZ	57.6523, 55.2787, 59.2610
YIQ	198.6650, 17.4210, 9.1730

Conversions

Conversions Part 2

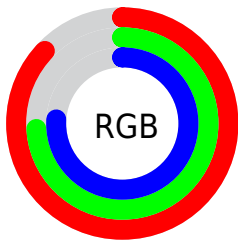
Format	Color
RYB	221, 188, 195
Decimal	14531779
CIELab	79.20, 12.90, 0.85
CIELCh	79, 12.926, 3.762
Yxy	55.2787, 0.3348, 0.3210
Android (android.graphics.Color)	4292721859 (0xFFDDBCC3)
YUV	198.6650, -1.8068, 19.5878
Hunter-Lab	74.3497, 8.3009, 4.7872

Details

The Hex color **DDBCC3** is a light color, and the websafe version is hex **FFCCCC**. A complement of this color would be **BCDDD6**, and the grayscale version is **C7C7C7**.

A 20% lighter version of the original color is **FFF4FC**, and **A6878D** is the 20% darker color. If you saturate the color by 10%, you get **DDA6B2**, and if you desaturate by 10%, it is **DDD2D4**.

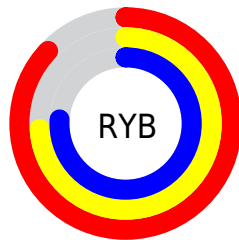
Distribution



Red (87%)

Green (74%)

Blue (76%)



Red (87%)

Yellow (74%)

Blue (76%)

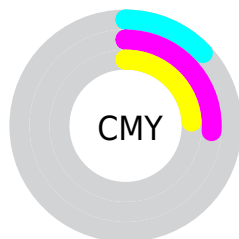


Cyan (0%)

Magenta (15%)

Yellow (12%)

Black (13%)



Cyan (13%)

Magenta (26%)

Yellow (24%)

Brightness & Saturation Gradients

These gradients show how the Hex color DDBCC3 changes by changing the brightness by 10 percent. The first figure shows a shift by +10% for each color and the second figure -10%.

Similar to the brightness gradients but the following saturation gradients show a change of the Hex color DDBCC3 by changing the saturation by 10% instead.

 DDBCC3

FFFFFF


 FFF4FC

 DDBCC3

 C1A1A8

 A6878D

 8B6D74

 71555B

 593E44

 41282E

 2A1319

 150000

 000000

 DDBCC3

 DDBCC3

 DDA6B2

 DDD2D4

 DD90A0

 DDE8E6

 DD7A8F

 DDFEF7

 DD647D

 DDFFFF

 DD4E6C

 DD375B

 DD2149

 DD0B38

 DD002F

Harmonies

Analogous

The Analogous color harmony consists of three colors that are next to each other on the color wheel.



D5BDCF



DDBCC3



DEBDB7

Triad

The Triadic color harmony groups three colors that are evenly spaced from another and form a triangle on the color wheel.



DDBCC3



BFC8B0



ACC8D9

Complementary

The Complementary color scheme is a pair of colors which are on the opposite of each other on the color wheel.



DDBCC3



BCDDD6

Split Complementary

Split-complementary colors differ from the complementary color scheme. The scheme consists of three colors, the original color and two neighbors of the complement color.



A6CBD1



DDBCC3



B2CAB9

Square

The Square scheme is like the rectangle color scheme, but the four colors are evenly spaced on the color wheel.



DDBCC3



CDC4AC



A8CBC5



B9C5DC

Rectangle

The Rectangle color scheme consists of four colors that form a rectangle on the color wheel.



DDBCC3



DABFB1



A8CBC5



A9C9D7

Sweetspot

The Sweet Spot groups the original color and five complimentary colors.



DDBCC3



FFF5F7



D6BCDD



80797A



000000



808080

Same Dimension

The Same Dimension uses a secret algorithm to generate beautiful new colors.



DDBCC3



FFD1DB



DDC5BC



6E6365



AD0025



2E000A

Inverse Universe

The Inverse Universe completely reimagines the original color for something new.



DDBCC3



FFD1DB



BCD4DD



6E6365



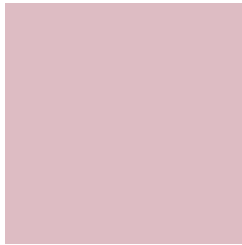
AD0025



2E000A

Previews

White Background



This preview shows how the Hex color DDBCC3 looks on a white background.

Color Contrast Check

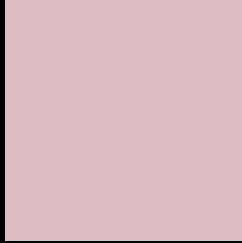
Large Text (above 18pt) WCAG AA × Fail

Any Text WCAG AA × Fail

Large Text (above 18pt) WCAG AAA × Fail

Any Text WCAG AAA × Fail

Black Background



This preview shows how the Hex color DDBCC3 looks on a black background.

Color Contrast Check

Large Text (above 18pt) WCAG AA ✓ Pass

Any Text WCAG AA ✓ Pass

Large Text (above 18pt) WCAG AAA ✓ Pass

Any Text WCAG AAA ✓ Pass

If you want to check with other color combinations, try the [Color Contrast Checker](#).

Hex DDBCC3 Background



This preview shows how black text looks on a background with the Hex color DDBCC3.

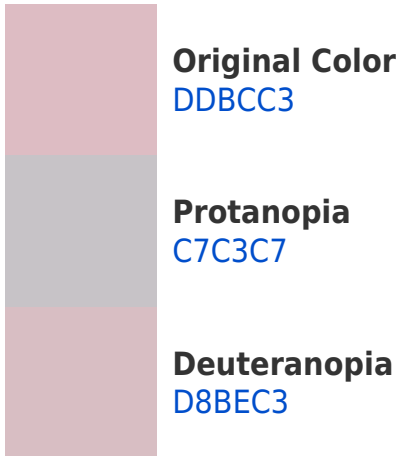


This preview shows how white text looks on a background with the Hex color DDBCC3.

Color Blindness Simulation

Color vision deficiency is a very complex topic, and I could not describe the different causes any better than Wikipedia does, so if you want to learn more, you should check out their [article about color blindness](#).

Dichromacy



Trichromacy



Original Color

DBCC3

Protanomaly

CFC0C6

Deuteranomaly

DABDC3

Tritanomaly

DEBBC7

Monochromacy



Original Color

DBCC3

Achromatopsia

C7C7C7

Achromatomaly

CFC3C6

CSS Examples

Text

The CSS property to change the color of the text to Hex DDBCC3 is called "color". The color property can be set on classes, ids or directly on the HTML element.

This example shows how text in the color #DDBCC3 looks like.

```
.text, #text, p{  
    color:#DDBCC3  
}
```

If you want to add a text shadow in that color use the text-shadow property, you can generate a text shadow directly with our [CSS Text Shadow Generator](#).

Here you see how black text with a 4 pixel #DDBCC3 colored shadow looks like.

```
.shadow{ text-shadow: 4px 4px 2px #DDBCC3
}
```

Border

The CSS property to change the border of an element to Hex DDBCC3 is called "border". The border property can be set on classes, ids or directly on the HTML element.

This example shows the color as border, it can be applied via the CSS property "border" or "border-color".

```
.border, #border, table{ border:4px solid
#DDBCC3 }
```

If only the border color should be changed use the property `border-color`.

```
.border{ border-color:#DDBCC3 }
```

If you want to add a box shadow in that color use:

Here you see how a box with a 4 pixel #DDBCC3 colored shadow looks like.

```
.boxshadow{ -moz-box-shadow:4px 4px 4px  
4px #DDBCC3; -webkit-box-shadow:4px 4px  
4px 4px #DDBCC3; box-shadow:4px 4px 4px  
4px #DDBCC3 }
```

Background

The CSS property to change the background color of an element to Hex DDBCC3 is called "background". The background property can be set on classes, ids or directly on the HTML element.

```
.background, #background, body{  
background:#DDBCC3 }
```

If only the background color should be changed can be used:

```
.background{ background-color:#DDBCC3 }
```

This example shows the color as background, it is applied via the CSS property "background".

To optimize and compress your CSS code, you can use our [online CSS compressor and optimizer](#) based on csstidy. If you want to create a linear or radial gradient as background or border, check our [CSS Gradient Generator](#).

Hey! You found this booklet interesting? Support Converting Colors with the new Membership Option!

The pro membership hides all ads, plus gives you double the colors in the color bucket, and more awesome pro features!

[Learn more, Memberships starting at \\$2.50/m!](#)

**Follow me
on Twitter!**

@ConvertingColor