

Converting Colors

Hex(DDC27C)

Have a look what the booklet for
Hex(DDC27C) contains.

Hex(DDC27C)	3
<i>Conversions</i>	4
<i>Details</i>	6
<i>Harmonies</i>	11
<i>Previews</i>	23
<i>Color Blindness Simulation</i>	26
<i>CSS Examples</i>	29

Color

Hex(DDC27C)

Conversions

Conversions Part 1

Format	Color
Hex	DDC27C
RGB	221, 194, 124
RGB Percent	87%, 76%, 49%
CMY	0.1333, 0.2392, 0.5137
CMYK	0.00, 0.12, 0.44, 0.13
HSL	43°, 59%, 68%
HSV	43°, 44%, 87%
XYZ	52.7487, 55.4110, 26.9840
YIQ	194.0930, 38.5620, -16.0460

Conversions

Conversions Part 2

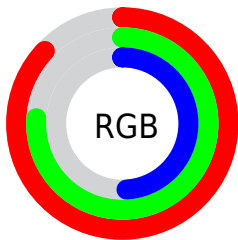
Format	Color
R_{YB}	161, 221, 124
Decimal	14533244
CIE _{Lab}	79.28, 0.21, 38.65
CIE _{LCh}	79, 38.646, 89.683
Yxy	55.4110, 0.3903, 0.4100
Android (android.graphics.Color)	4292723324 (0xFFDDC27C)
YUV	194.0930, -34.5558, 23.5974
Hunter-Lab	74.4385, -3.7787, 30.6143

Details

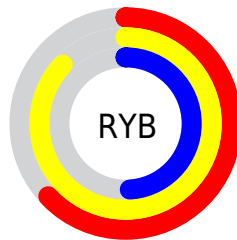
The Hex color **DDC27C** is a light color, and the websafe version is hex **FFCC99**. A complement of this color would be **7C97DD**, and the grayscale version is **C2C2C2**.

A 20% lighter version of the original color is **FFFAB1**, and **A48D4A** is the 20% darker color. If you saturate the color by 10%, you get **DDBC66**, and if you desaturate by 10%, it is **DDC892**.

Distribution



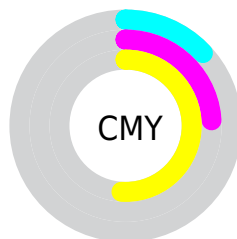
- Red (87%)
- Green (76%)
- Blue (49%)



- Red (63%)
- Yellow (87%)
- Blue (49%)



- Cyan (0%)
- Magenta (12%)
- Yellow (44%)
- Black (13%)



- Cyan (13%)
- Magenta (24%)
- Yellow (51%)

Brightness & Saturation Gradients

These gradients show how the Hex color DDC27C changes by changing the brightness by 10 percent. The first figure shows a shift by +10% for each color and the second figure -10%.

Similar to the brightness gradients but the following saturation gradients show a change of the Hex color DDC27C by changing the saturation by 10% instead.

 DDC27C

FFFFFF

 FFFAB1

 FFFFCD

 FFFFEA

 DDC27C

 C0A762

 A48D4A

 897331

 6E5B19

 544300

 3B2D00

 221900

 000000

 DDC27C

 DDC27C

 DDBC66

 DDC892

 DDB650

 DDCEA8

 DDB03A

 DDD4BE

 DDA924

 DDDBD4

 DDA30E

 DDE1EB

 DD9F00

 DDE7FF

 DDEDFF

 DDF3FF

 DDF9FF

Harmonies

Analogous

The Analogous color harmony consists of three colors that are next to each other on the color wheel.



FAB687



DDC27C



B7CD85

Triad

The Triadic color harmony groups three colors that are evenly spaced from another and form a triangle on the color wheel.



DDC27C



40D7E7



F2AFE9

Complementary

The Complementary color scheme is a pair of colors which are on the opposite of each other on the color wheel.



DDC27C



7C97DD

Split Complementary

Split-complementary colors differ from the complementary color scheme. The scheme consists of three colors, the original color and two neighbors of the complement color.



C8BBFF



DDC27C



59D2FF

Square

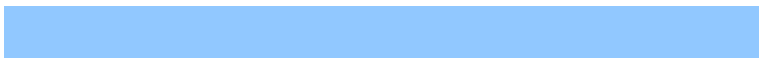
The Square scheme is like the rectangle color scheme, but the four colors are evenly spaced on the color wheel.



DDC27C



60D8C3



91C8FF



FFA9C6

Rectangle

The Rectangle color scheme consists of four colors that form a rectangle on the color wheel.



DDC27C



9BD295



91C8FF



E6B3F3

Sweetspot

The Sweet Spot groups the original color and five complimentary colors.



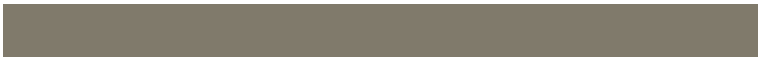
DDC27C



FFF6DE



DD7C97



807A6B



000000



808080

Same Dimension

The Same Dimension uses a secret algorithm to generate beautiful new colors.



DDC27C



FFD978



C8DD7C



6E6B63



AD7D00



2E2100

Inverse Universe

The Inverse Universe completely reimagines the original color for something new.



7C97DD



789DFF



917CDD



63666E



0030AD



000D2E

Previews

White Background



This preview shows how the Hex color DDC27C looks on a white background.

Color Contrast Check

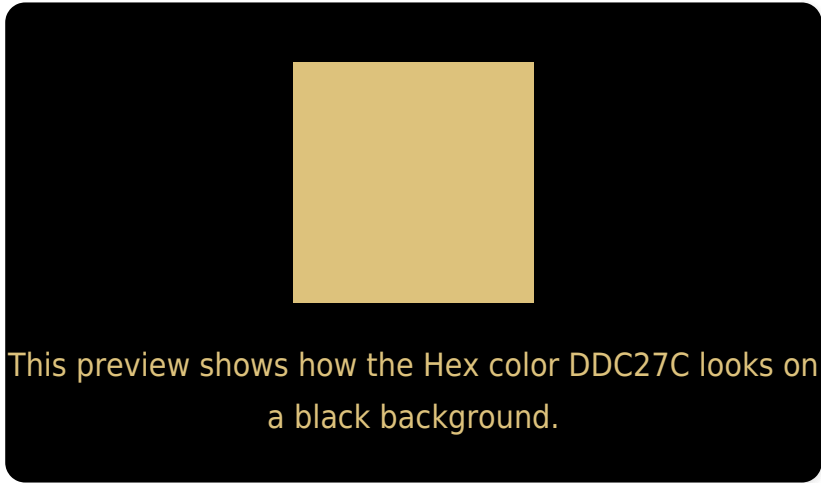
Large Text (above 18pt) WCAG AA × Fail

Any Text WCAG AA × Fail

Large Text (above 18pt) WCAG AAA × Fail

Any Text WCAG AAA × Fail

Black Background



Color Contrast Check

Large Text (above 18pt) WCAG AA ✓ Pass

Any Text WCAG AA ✓ Pass

Large Text (above 18pt) WCAG AAA ✓ Pass

Any Text WCAG AAA ✓ Pass

If you want to check with other color combinations, try the [Color Contrast Checker](#).

Hex DDC27C Background



This preview shows how black text looks on a background with the Hex color DDC27C.

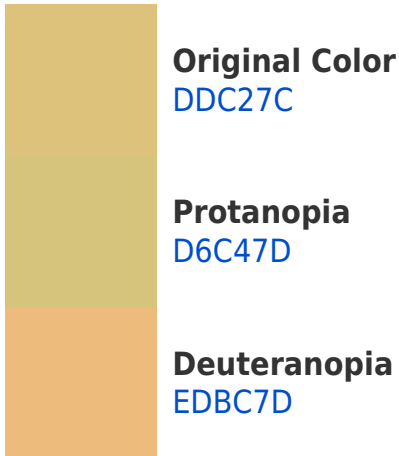


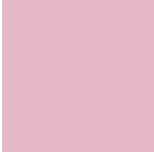
This preview shows how white text looks on a background with the Hex color DDC27C.

Color Blindness Simulation

Color vision deficiency is a very complex topic, and I could not describe the different causes any better than Wikipedia does, so if you want to learn more, you should check out their [article about color blindness](#).

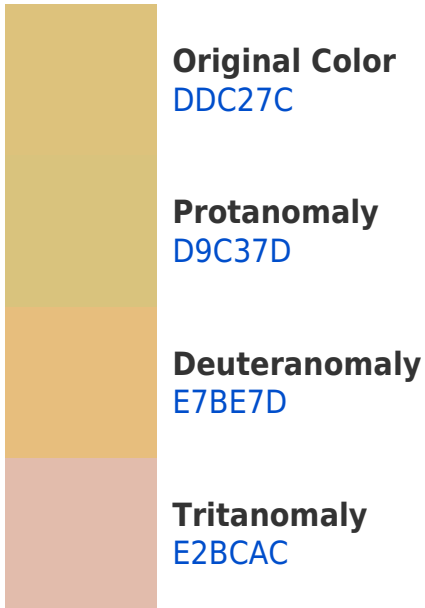
Dichromacy



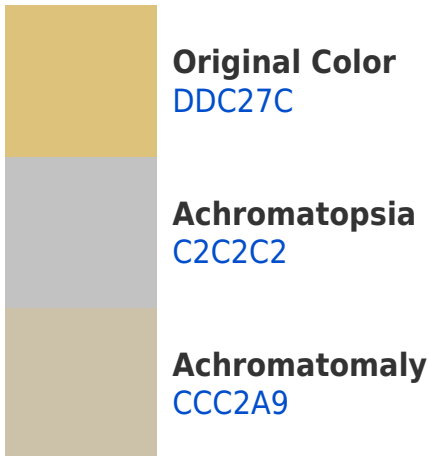


Tritanopia
E5B9C7

Trichromacy



Monochromacy



CSS Examples

Text

The CSS property to change the color of the text to Hex DDC27C is called "color". The color property can be set on classes, ids or directly on the HTML element.

This example shows how text in the color #DDC27C looks like.

```
.text, #text, p{  
    color:#DDC27C  
}
```

If you want to add a text shadow in that color use the text-shadow property, you can generate a text shadow directly with our [CSS Text Shadow Generator](#).

Here you see how black text with a 4 pixel #DDC27C colored shadow looks like.

```
.shadow{ text-shadow: 4px 4px 2px #DDC27C
}
```

Border

The CSS property to change the border of an element to Hex DDC27C is called "border". The border property can be set on classes, ids or directly on the HTML element.

This example shows the color as border, it can be applied via the CSS property "border" or "border-color".

```
.border, #border, table{ border:4px solid
#DDC27C }
```

If only the border color should be changed use the property `border-color`.

```
.border{ border-color:#DDC27C }
```

If you want to add a box shadow in that color use:

Here you see how a box with a 4 pixel #DDC27C colored shadow looks like.

```
.boxshadow{ -moz-box-shadow:4px 4px 4px  
4px #DDC27C; -webkit-box-shadow:4px 4px  
4px 4px #DDC27C; box-shadow:4px 4px 4px  
4px #DDC27C }
```

Background

The CSS property to change the background color of an element to Hex DDC27C is called "background". The background property can be set on classes, ids or directly on the HTML element.

```
.background, #background, body{  
background:#DDC27C }
```

If only the background color should be changed can be used:

```
.background{ background-color:#DDC27C }
```

This example shows the color as background, it is applied via the CSS property "background".

To optimize and compress your CSS code, you can use our [online CSS compressor and optimizer](#) based on csstidy. If you want to create a linear or radial gradient as background or border, check our [CSS Gradient Generator](#).

Hey! You found this booklet interesting? Support Converting Colors with the new Membership Option!

The pro membership hides all ads, plus gives you double the colors in the color bucket, and more awesome pro features!

[Learn more, Memberships starting at \\$2.50/m!](#)

**Follow me
on Twitter!**

@ConvertingColor