

Converting Colors

Hex(DDC3C6)

Have a look what the booklet for
Hex(DDC3C6) contains.

Hex(DDC3C6)	3
<i>Conversions</i>	4
<i>Details</i>	6
<i>Harmonies</i>	11
<i>Previews</i>	23
<i>Color Blindness Simulation</i>	26
<i>CSS Examples</i>	29

Color

Hex(DDC3C6)

Conversions

Conversions Part 1

Format	Color
Hex	DDC3C6
RGB	221, 195, 198
RGB Percent	87%, 76%, 78%
CMY	0.1333, 0.2353, 0.2235
CMYK	0.00, 0.12, 0.10, 0.13
HSL	353°, 28%, 82%
HSV	353°, 12%, 87%
XYZ	59.5269, 58.4796, 61.5764
YIQ	203.1160, 14.5330, 6.4450

Conversions

Conversions Part 2

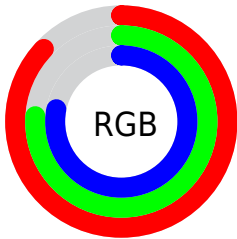
Format	Color
R_{YB}	221, 195, 198
Decimal	14533574
CIE _{Lab}	81.00, 9.66, 1.86
CIE _{LCh}	81, 9.841, 10.879
Yxy	58.4796, 0.3315, 0.3256
Android (android.graphics.Color)	4292723654 (0xFFDDC3C6)
YUV	203.1160, -2.5222, 15.6843
Hunter-Lab	76.4719, 5.1213, 5.7892

Details

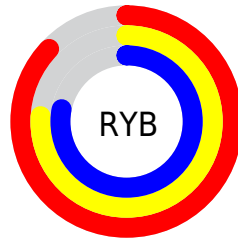
The Hex color **DDC3C6** is a light color, and the websafe version is hex **CCCCCC**. A complement of this color would be **C3DDDA**, and the grayscale version is **CBCBCB**.

A 20% lighter version of the original color is **FFFCFF**, and **A68D90** is the 20% darker color. If you saturate the color by 10%, you get **DDADB2**, and if you desaturate by 10%, it is **DDD9DA**.

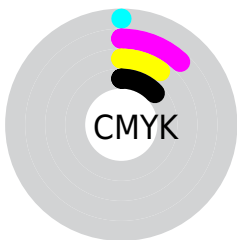
Distribution



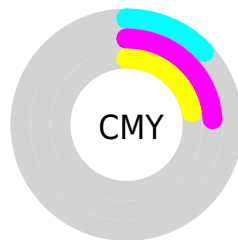
- Red (87%)
- Green (76%)
- Blue (78%)



- Red (87%)
- Yellow (76%)
- Blue (78%)



- Cyan (0%)
- Magenta (12%)
- Yellow (10%)
- Black (13%)



- Cyan (13%)
- Magenta (24%)
- Yellow (22%)

Brightness & Saturation Gradients

These gradients show how the Hex color DDC3C6 changes by changing the brightness by 10 percent. The first figure shows a shift by +10% for each color and the second figure -10%.

Similar to the brightness gradients but the following saturation gradients show a change of the Hex color DDC3C6 by changing the saturation by 10% instead.

 DDC3C6

FFFFFF

 FFFCFF

 DDC3C6

 C1A8AB

 A68D90

 8B7477

 725B5E

 594446

 412D30

 2B181B

 180000

 000000

 DDC3C6

 DDC3C6

 DDADB2

 DDD9DA

 DD979F

 DDEFED

 DD818B

 DDFFFF

 DD6B78

 DD5564

 DD3E51

 DD283D

 DD122A

 DD001A

Harmonies

Analogous

The Analogous color harmony consists of three colors that are next to each other on the color wheel.



D8C4CF



DDC3C6



DCC4BD

Triad

The Triadic color harmony groups three colors that are evenly spaced from another and form a triangle on the color wheel.



DDC3C6



C3CCBB



B9CCDA

Complementary

The Complementary color scheme is a pair of colors which are on the opposite of each other on the color wheel.



DDC3C6



C3DDDA

Split Complementary

Split-complementary colors differ from the complementary color scheme. The scheme consists of three colors, the original color and two neighbors of the complement color.



B3CED5



DDC3C6



B9CEC3

Square

The Square scheme is like the rectangle color scheme, but the four colors are evenly spaced on the color wheel.



DDC3C6



CDCAB7



B3CFCC



C4C9DB

Rectangle

The Rectangle color scheme consists of four colors that form a rectangle on the color wheel.



DDC3C6



D9C6B9



B3CFCC



B7CDD9

Sweetspot

The Sweet Spot groups the original color and five complimentary colors.



DDC3C6



FFF5F6



DAC3DD



80797A



000000



808080

Same Dimension

The Same Dimension uses a secret algorithm to generate beautiful new colors.



DDC3C6



FFDBDF



DDCDC3



6E6364



AD0014



2E0005

Inverse Universe

The Inverse Universe completely reimagines the original color for something new.



DDC3C6



FFDBDF



C3D3DD



6E6364



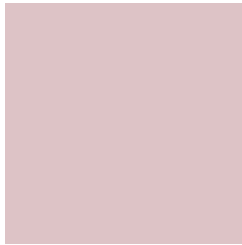
AD0014



2E0005

Previews

White Background



This preview shows how the Hex color DDC3C6 looks on a white background.

Color Contrast Check

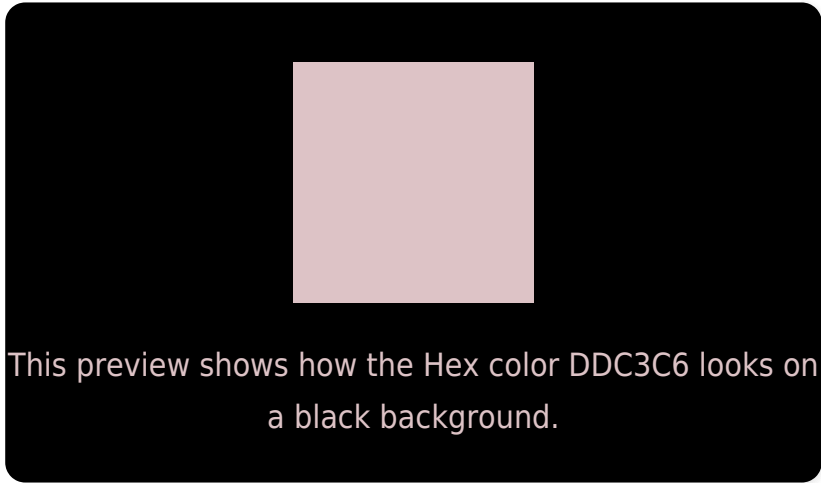
Large Text (above 18pt) WCAG AA × Fail

Any Text WCAG AA × Fail

Large Text (above 18pt) WCAG AAA × Fail

Any Text WCAG AAA × Fail

Black Background



Color Contrast Check

Large Text (above 18pt) WCAG AA ✓ Pass

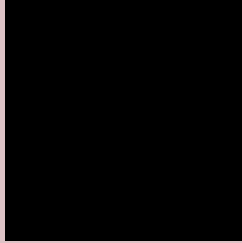
Any Text WCAG AA ✓ Pass

Large Text (above 18pt) WCAG AAA ✓ Pass

Any Text WCAG AAA ✓ Pass

If you want to check with other color combinations, try the [Color Contrast Checker](#).

Hex DDC3C6 Background



This preview shows how black text looks on a background with the Hex color DDC3C6.



This preview shows how white text looks on a background with the Hex color DDC3C6.

Color Blindness Simulation

Color vision deficiency is a very complex topic, and I could not describe the different causes any better than Wikipedia does, so if you want to learn more, you should check out their [article about color blindness](#).

Dichromacy

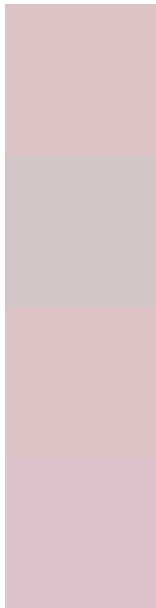


Original Color
DDC3C6

Protanopia
CDC8C9

Deuteranopia
DEC3C6

Trichromacy



Original Color
DDC3C6

Protanomaly
D3C6C8

Deuteranomaly
DEC3C6

Tritanomaly
DEC2CC

Monochromacy



Original Color
DDC3C6

Achromatopsia
CBCBCB

Achromatomaly
D2C8C9

CSS Examples

Text

The CSS property to change the color of the text to Hex DDC3C6 is called "color". The color property can be set on classes, ids or directly on the HTML element.

This example shows how text in the color #DDC3C6 looks like.

```
.text, #text, p{  
    color:#DDC3C6  
}
```

If you want to add a text shadow in that color use the text-shadow property, you can generate a text shadow directly with our [CSS Text Shadow Generator](#).

Here you see how black text with a 4 pixel #DDC3C6 colored shadow looks like.

```
.shadow{ text-shadow: 4px 4px 2px #DDC3C6  
}
```

Border

The CSS property to change the border of an element to Hex DDC3C6 is called "border". The border property can be set on classes, ids or directly on the HTML element.

This example shows the color as border, it can be applied via the CSS property "border" or "border-color".

```
.border, #border, table{ border:4px solid  
#DDC3C6 }
```

If only the border color should be changed use the property `border-color`.

```
.border{ border-color:#DDC3C6 }
```

If you want to add a box shadow in that color use:

Here you see how a box with a 4 pixel #DDC3C6 colored shadow looks like.

```
.boxshadow{ -moz-box-shadow:4px 4px 4px  
4px #DDC3C6; -webkit-box-shadow:4px 4px  
4px 4px #DDC3C6; box-shadow:4px 4px 4px  
4px #DDC3C6 }
```

Background

The CSS property to change the background color of an element to Hex DDC3C6 is called "background". The background property can be set on classes, ids or directly on the HTML element.

```
.background, #background, body{  
background:#DDC3C6 }
```

If only the background color should be changed can be used:

```
.background{ background-color:#DDC3C6 }
```

This example shows the color as background, it is applied via the CSS property "background".

To optimize and compress your CSS code, you can use our [online CSS compressor and optimizer](#) based on csstidy. If you want to create a linear or radial gradient as background or border, check our [CSS Gradient Generator](#).

Hey! You found this booklet interesting? Support Converting Colors with the new Membership Option!

The pro membership hides all ads, plus gives you double the colors in the color bucket, and more awesome pro features!

[Learn more, Memberships starting at \\$2.50/m!](#)

**Follow me
on Twitter!**

@ConvertingColor