

Converting Colors

Hex(DDC3C9)

Have a look what the booklet for
Hex(DDC3C9) contains.

Hex(DDC3C9)	3
<i>Conversions</i>	4
<i>Details</i>	6
<i>Harmonies</i>	11
<i>Previews</i>	23
<i>Color Blindness Simulation</i>	26
<i>CSS Examples</i>	29

Color

Hex(DDC3C9)

Conversions

Conversions Part 1

Format	Color
Hex	DDC3C9
RGB	221, 195, 201
RGB Percent	87%, 76%, 79%
CMY	0.1333, 0.2353, 0.2118
CMYK	0.00, 0.12, 0.09, 0.13
HSL	346°, 28%, 82%
HSV	346°, 12%, 87%
XYZ	59.8765, 58.6194, 63.4172
YIQ	203.4580, 13.5700, 7.3780

Conversions

Conversions Part 2

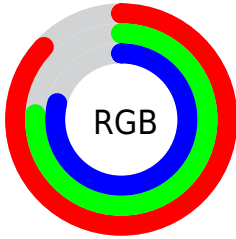
Format	Color
R _Y B	221, 195, 201
Decimal	14533577
CIE Lab	81.08, 10.17, 0.36
CIE LCh	81, 10.173, 2.020
Yxy	58.6194, 0.3291, 0.3222
Android (android.graphics.Color)	4292723657 (0xFFDDC3C9)
YUV	203.4580, -1.2118, 15.3843
Hunter-Lab	76.5633, 5.6105, 4.4846

Details

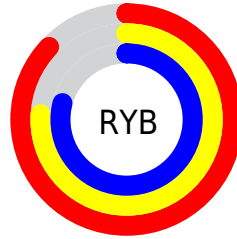
The Hex color **DDC3C9** is a light color, and the websafe version is hex **CCCCCC**. A complement of this color would be **C3DDD7**, and the grayscale version is **CBCBCB**.

A 20% lighter version of the original color is **FFFCFF**, and **A68D93** is the 20% darker color. If you saturate the color by 10%, you get **DDADB8**, and if you desaturate by 10%, it is **DDD9DA**.

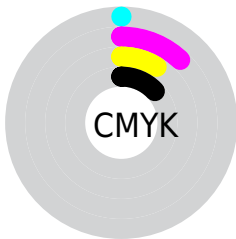
Distribution



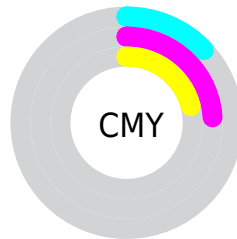
- Red (87%)
- Green (76%)
- Blue (79%)



- Red (87%)
- Yellow (76%)
- Blue (79%)



- Cyan (0%)
- Magenta (12%)
- Yellow (9%)
- Black (13%)



- Cyan (13%)
- Magenta (24%)
- Yellow (21%)

Brightness & Saturation Gradients

These gradients show how the Hex color DDC3C9 changes by changing the brightness by 10 percent. The first figure shows a shift by +10% for each color and the second figure -10%.

Similar to the brightness gradients but the following saturation gradients show a change of the Hex color DDC3C9 by changing the saturation by 10% instead.

 DDC3C9

FFFFFF

 FFFCFF

 DDC3C9

 C1A8AE

 A68D93

 8B7479

 725B61

 594449

 412D32

 2B181D

 180004

 000000

 DDC3C9

 DDC3C9

 DDADB8

 DDD9DA

 DD97A7

 DDEFEB

 DD8196

 DDFFFC

 DD6B85

 DDFFFF

 DD5574

 DD3E63

 DD2852

 DD1241

 DD0033

Harmonies

Analogous

The Analogous color harmony consists of three colors that are next to each other on the color wheel.



D7C4D2



DDC3C9



DEC4C0

Triad

The Triadic color harmony groups three colors that are evenly spaced from another and form a triangle on the color wheel.



DDC3C9



C6CCB9



B7CDDA

Complementary

The Complementary color scheme is a pair of colors which are on the opposite of each other on the color wheel.



DDC3C9



C3DDD7

Split Complementary

Split-complementary colors differ from the complementary color scheme. The scheme consists of three colors, the original color and two neighbors of the complement color.



B2CFD3



DDC3C9



BBCEC0

Square

The Square scheme is like the rectangle color scheme, but the four colors are evenly spaced on the color wheel.



DDC3C9



D1C9B6



B4CFCA



C0CADC

Rectangle

The Rectangle color scheme consists of four colors that form a rectangle on the color wheel.



DDC3C9



DCC5BB



B4CFCA



B4CED8

Sweetspot

The Sweet Spot groups the original color and five complimentary colors.



DDC3C9



FFF5F7



D7C3DD



80797B



000000



808080

Same Dimension

The Same Dimension uses a secret algorithm to generate beautiful new colors.



DDC3C9



FFDBE4



DDCAC3



6E6365



AD0028



2E000B

Inverse Universe

The Inverse Universe completely reimagines the original color for something new.



DDC3C9



FFDBE4



C3D6DD



6E6365



AD0028



2E000B

Previews

White Background



This preview shows how the Hex color DDC3C9 looks on a white background.

Color Contrast Check

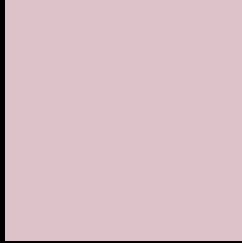
Large Text (above 18pt) WCAG AA × Fail

Any Text WCAG AA × Fail

Large Text (above 18pt) WCAG AAA × Fail

Any Text WCAG AAA × Fail

Black Background



This preview shows how the Hex color DDC3C9 looks on a black background.

Color Contrast Check

Large Text (above 18pt) WCAG AA ✓ Pass

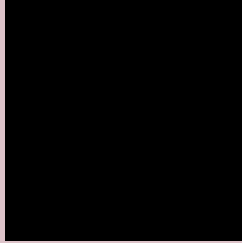
Any Text WCAG AA ✓ Pass

Large Text (above 18pt) WCAG AAA ✓ Pass

Any Text WCAG AAA ✓ Pass

If you want to check with other color combinations, try the [Color Contrast Checker](#).

Hex DDC3C9 Background



This preview shows how black text looks on a background with the Hex color DDC3C9.

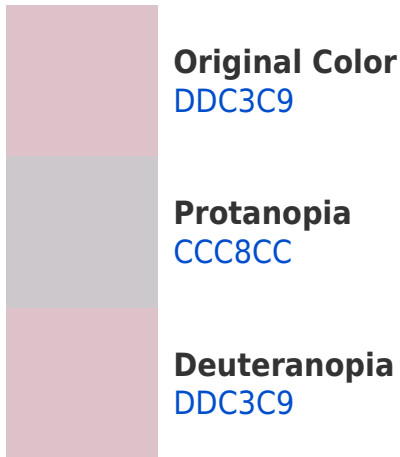


This preview shows how white text looks on a background with the Hex color DDC3C9.

Color Blindness Simulation

Color vision deficiency is a very complex topic, and I could not describe the different causes any better than Wikipedia does, so if you want to learn more, you should check out their [article about color blindness](#).

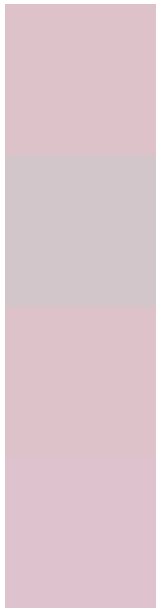
Dichromacy





Tritanopia
DEC2D1

Trichromacy



Original Color
DDC3C9

Protanomaly
D2C6CB

Deuteranomaly
DDC3C9

Tritanomaly
DEC2CE

Monochromacy



Original Color
DDC3C9

Achromatopsia
CBCBCB

Achromatomaly
D2C8CA

CSS Examples

Text

The CSS property to change the color of the text to Hex DDC3C9 is called "color". The color property can be set on classes, ids or directly on the HTML element.

This example shows how text in the color #DDC3C9 looks like.

```
.text, #text, p{  
    color:#DDC3C9  
}
```

If you want to add a text shadow in that color use the text-shadow property, you can generate a text shadow directly with our [CSS Text Shadow Generator](#).

Here you see how black text with a 4 pixel #DDC3C9 colored shadow looks like.

```
.shadow{ text-shadow: 4px 4px 2px #DDC3C9
}
```

Border

The CSS property to change the border of an element to Hex DDC3C9 is called "border". The border property can be set on classes, ids or directly on the HTML element.

This example shows the color as border, it can be applied via the CSS property "border" or "border-color".

```
.border, #border, table{ border:4px solid
#DDC3C9 }
```

If only the border color should be changed use the property `border-color`.

```
.border{ border-color:#DDC3C9 }
```

If you want to add a box shadow in that color use:

Here you see how a box with a 4 pixel #DDC3C9 colored shadow looks like.

```
.boxshadow{ -moz-box-shadow:4px 4px 4px  
4px #DDC3C9; -webkit-box-shadow:4px 4px  
4px 4px #DDC3C9; box-shadow:4px 4px 4px  
4px #DDC3C9 }
```

Background

The CSS property to change the background color of an element to Hex DDC3C9 is called "background". The background property can be set on classes, ids or directly on the HTML element.

```
.background, #background, body{  
background:#DDC3C9 }
```

If only the background color should be changed can be used:

```
.background{ background-color:#DDC3C9 }
```

This example shows the color as background, it is applied via the CSS property "background".

To optimize and compress your CSS code, you can use our [online CSS compressor and optimizer](#) based on csstidy. If you want to create a linear or radial gradient as background or border, check our [CSS Gradient Generator](#).

Hey! You found this booklet interesting? Support Converting Colors with the new Membership Option!

The pro membership hides all ads, plus gives you double the colors in the color bucket, and more awesome pro features!

[Learn more, Memberships starting at \\$2.50/m!](#)

**Follow me
on Twitter!**

@ConvertingColor